

# AYLESBURY TOWN

Aylesbury Town Council Magazine  
Issue Thirty Nine • Published Quarterly  
December 2015 to February 2016

# matters



*Serving the people of Aylesbury*



**'Take pride in Aylesbury Town'**

[www.aylesburytowncouncil.gov.uk](http://www.aylesburytowncouncil.gov.uk)



# Town Centre Christmas Events

Merry  
Christmas



**Thursday 19 November**

## Christmas Lights Switch On

**Market Square and Kingsbury, 5.30pm**

Popular event providing free family entertainment from 5.30pm. The lights will be switched on at 7.00pm, followed by fireworks and music. There is also a small funfair and the opportunity to do some late night shopping until 8.00pm.

**Tuesday 24 November**

## Farmers' Market

**Market Square, 9.00am – 2.00pm**

Pick up some locally grown tasty treats at the festive Farmers' Market.

**Sunday 29 November**

## Santa Parade

**Parade starts in the town centre at 10.45am, activities 11.00am – 3.00pm**

A firm family favourite. Santa and his friends parade through the town from the High Street and around Market Square. There will be a small funfair, activities and entertainment after the parade.

**Sunday 6 December**

## Christmas Craft & Gift Fair

**Market Square  
11.00am – 3.00pm**

Enjoy live music as you browse the stalls at the Christmas Craft and Gift Speciality Fair. With a wide range of crafted items and unusual gifts, there's something for everyone.

## Mayor's Carol Service

**St Mary's Church  
5.30pm – 6.30pm**

Join the Town Mayor of Aylesbury together with Aylesbury Choral Society,

Aylesbury Concert Band and the

Mayor's charity, Community Unity Project, for a service of carols, readings and music, followed by mince pies and mulled wine as we celebrate the start of the Christmas festivities.

**7th till 28th December**

## Handmade Gifts for Christmas

**Queens Park Arts Centre**

Pop-up Christmas shop. Open during term time and throughout the festive pantomime. Bespoke items on offer will include pottery, ceramics, jewellery and more – ideal for Christmas presents. For full opening times please call **01296 424332**.

**Sunday 13 December**

## Festive Family Fun

**Friars Square & Market Square, 11.00am – 4.00pm**

A spectacular day of FREE entertainment for all the family. Magicians, live music, stilt walkers, balloon modelling, face painting, arts and crafts and a Giant Snow Globe for fun and photographs. If this is not enough enjoy the fairground rides, barrel organ and hot chestnuts in Market Square.

## Carolfest

**St Mary's Church, 6.00pm – 7.00pm**

Enjoy the relaxed atmosphere, a cup of soup or hot chocolate and get the entire family into the festive spirit with a good old Christmas sing-a-long. Carols will be led by the Wingrave Singers, Caduceus Brass Quintet and pupils from Elmhurst School.

**Thursday 24 December**

## Free Batak and Racing Santas

**Kingsbury, 11.00am – 3.00pm**

#AylesburyThursdays: Help Santa win the race or put your Batak skills to the test – all for free!

**Thursday 31 December**

## Free Laser Quest & Snowman Challenge

**Kingsbury, 11.00am – 3.00pm**

#AylesburyThursdays: Keep the kids busy for free at the last event of 2015!

## LATE NIGHT SHOPPING

Remember there is **FREE PARKING** on Thursdays from 4.30pm (starting 19 November to 24 December inclusive) in AVDC Aylesbury town centre car parks.

## Contents

<b>ATC News &amp; Events</b>	
Town Centre Christmas Events	2
Welcome Note	3
Summer and Festive Events	4-5
Aylesbury Talking Newspapers	12
Town Hall Facilities	12
ATC Invites Your Comments	12
RADAR Keys	12
Town Mayor's Awards 2015/2016	13
Mayor's Carol Service	13
Heritage Open Days 2015	14
Ward Map	16
Council Services	17
Town Mayor's Update	20
Festive Family Fun	24
<b>Environment</b>	
Allotment Awards	6
Garden Competition Awards	6-7
<b>Community News &amp; Events</b>	
Aylesbury Vale Community Bank	8
Visit Aylesbury	8
Community Impact Bucks	8
Heart of Bucks	9
Young People Matter to Aylesbury	9
BreastFriends Aylesbury	10
Town Centre Events 2016	10
Buckinghamshire Gardens Trust	10
Buckinghamshire Mind	11
Chilterns MS Centre	11
<b>Aylesbury Town Council Grants</b>	
Grants Open Day and Grants Awarded	15
<b>Art &amp; Leisure</b>	
Queens Park Arts Centre	18
Presumed Extinct Debut Novel	18
J's Joyful Divas	18
Jubilee Players	18
Barbara Shaw	19
Aylesbury Symphony Orchestra	19
Bucks County Museum	19
<b>Schools</b>	
Booker Park School	21
Buckinghamshire UTC	21
Haydon Abbey School and Pre-School	21
<b>Sport</b>	
Ladies to Benefit from New Sports Programme	22
Aylesbury United Walking Football Club	22
<b>Activities for Young People</b>	
Young Volunteers bring Christmas Cheer!	23
Buckinghamshire (The Rifles) Army Cadet Force	23

## Welcome Note

“ We are delighted to bring you our latest issue of Aylesbury Town Matters. In this edition we congratulate the winners of our annual **Aylesbury in Bloom** competition and **Allotment Awards**. It was harder than ever this year to pick the stand-out entries among so many which reached an incredibly high standard, but our worthy winners (pictured on pages 6 and 7) give a flavour of just some of the amazing work done by businesses, residents and dedicated volunteers from many local organisations.

The Town Council continues to work hard keeping its own assets in tip-top condition, and we are pleased to get regular compliments on how lovely the cemetery looks for all our visitors. We were proud to have the Mayor officially open the cemetery extension and to have completed the refurbishment of the second of our two beautiful Victorian chapels. They are worth a visit!

What a truly amazing weekend this year's **Parklife** was! It was a delight to see Vale Park filled with thousands of people of all ages, loving the music of talented local bands and artists as well as 80's legend TOYAH. We felt we'd really achieved a real festival atmosphere that worked for the whole family (someone remarked to me on the day "it's just like a mini-Glastonbury, even down to the sight of people having a great time through a highly variable mix of weather conditions!").

Another bigger-than-ever success was our **Tudor Fayre** at the museum, combined with a very popular **Heritage Open Days** weekend in September. Many interesting local buildings were open for a rare public glimpse of what's inside, and the opportunity was taken up by record numbers of you – including for the first time ever the iconic 'Blue Leanie' Equitable Life building (where I do my day job, as it happens!).

Our events programme looks towards the festive season next, so please remember to save the dates (details on page 4 and 13) of our **Festive Family Fun** and **Carolfest**, as well as the **Mayor's Carol Service** at St Mary's, where young and old alike can come together as a community and enjoy the growing Christmassy feeling.

As always, I'd like to remind you that public feedback really matters to us – so do phone, write in or email us with any comments on what we do, or ideas you might have for improving the town for all who live, work and visit here. We get many letters and emails, and if you give your name and address we will always aim to reply directly. If your comments and concerns aren't related to the Town Council's role but to one of the other Councils (on roads and pavements for example), we will pass them on to the right person. Please remember there's a handy 'Which Council does what' guide on page 17 of this magazine.

Finally if you, or any Aylesbury resident you know of, would find it easier to receive this magazine in an audio version, or would like to be added to our list and receive regular email updates on Town Council news and events, please give the office a call. Details are on page 12. ”

Best wishes

**Councillor Mike Smith**  
Leader of Aylesbury Town Council

Aylesbury Town Council is twinned with Bourg-en-Bresse.



## Contact Details

**Aylesbury Town Council**  
Town Hall  
5 Church Street  
Aylesbury  
Buckinghamshire  
HP20 2QP

Tel: **01296 425678**

Fax: 01296 426134

[@aylesburytc](https://twitter.com/aylesburytc) [aylesburytc](https://www.facebook.com/aylesburytc)

[info@aylesburytowncouncil.gov.uk](mailto:info@aylesburytowncouncil.gov.uk)  
[www.aylesburytowncouncil.gov.uk](http://www.aylesburytowncouncil.gov.uk)

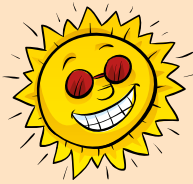
*Photos throughout the magazine courtesy of Maurice Cousins, Russ Naylor, Swale Photography, Derek Pelling, Harmony Naylor, Bucks County Museum, Eloise Dunn, Hannah Neal, Sherron Razey and Aylesbury Gardening Society.*

Printed by **Bluepepper Designs**  
[www.bpdesigns.co.uk](http://www.bpdesigns.co.uk)



# ATC News

## Summer Events



**Parklife** was a HUGE success with all whom attended, from you, our local residents, through to the performers, caterers, suppliers and volunteers. Many of you took the time to let us know what you thought about this new event and we are thrilled that you enjoyed it as much as we enjoyed organising it for you.

Saturday saw the start of the weekend with **Live in the Park**, where the massive outdoor stage hosted 9.5 hours of continuous live music – with amazing bands including Platform Soul, Old Country Union and Bustin' Loose, to the new talent of A Little Bit Country, Raving Wild and Georgie Bird and many more. The eclectic mix of music styles had groups dancing by their picnics and rocking by their rugs. 80's pop star TOYAH closed the show with a vibrant set, jam packed with 70's and 80's classics that had the over 5,000 strong crowd singing and boogying the night away. With the fairground rides, bouncy castle, mega slide, trampolines and children's entertainer to keep all the youngsters busy, it really was a fabulous day out for the entire family to enjoy.

On the Sunday, Aylesbury Church Network hosted **Church in the Park** and **Fun in the Park**, the annual free family fun day with masses of games, inflatables, arts, crafts and BBQ. This year saw the addition of rain to the day's events which didn't dampen the spirits of all the volunteers making sure that everyone who attended had a great day.



**Proms in the Park** rounded off the weekend with Aylesbury Concert Band accompanied by Alison Langer and Lawrence Thackeray performing an array of traditional Proms classics mixed with contemporary pieces including a compilation from StarWars and Lord of the Dance, which saw a spontaneous and unique interpretation of the Irish line dance performed by local residents. The smattering of rain didn't dampen anyone's spirits, as everyone continued to wave their Union Jacks, eat their picnics, drink their champagne and enjoy the performance with family and friends.

The **Tudor Fayre** at Bucks County Museum took all our visitors back to the time of King Henry VIII, with visits from the man himself, his Jester, a Naval Commander, Spice Merchant, Alchemist, Silk Woman, Musicians and

story teller, along with birds of prey, sword fighting, archery and many more. Visitors also enjoyed making candles and taking part in the array of crafts, some also learned to dance with our Tudor dancers and musicians.



## Festive Events



This year's **Festive Family Fun** day will take place from 11.00am until 4.00pm on Sunday 13th December in Friars Square, so that you can enjoy all of the entertainment and activities in the warmth of the centre. Be entertained by traditional Christmas songs, magic and a Mummer's Play, get involved with crafts, games and activities, enjoy the fairground rides, hot roast chestnuts and barrel organ outside in Market Square. If all of that is not enough, step inside our giant inflatable Snow Globe, play with the snow and have your photograph taken and printed for you to take home. All of this fantastic festive family fun is FREE for you to enjoy, so do come along.

St Mary's Church is the new location for **Carolfest**, where you can still enjoy a very relaxed, friendly atmosphere. We will be serving soup and hot chocolate (with the possibility of a mince pie or two), the children can wander around and enjoy the singing and the entire family can get into the festive spirit with a good old Christmas sing-a-long. Carols will be led by Caduceus Brass Quintet, The Wingrave Singers and school children from Elmhurst School. The merriment starts at 6.00pm on Sunday 13th December, so mark the date in your diary now.











## Allotment Awards

The annual Aylesbury Town Council (ATC) Allotments Awards were held in October at their new venue of the Railway Club, Aylesbury.

We are very grateful to this year's judges, Alderman Ray James (Allotment Warden – Crown Leys) and Joe Benham (Secretary, Aylesbury Gardening Society) for spending three days in July in the wind, rain and sun, to judge the plots and pick our prize winners.

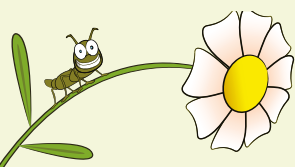
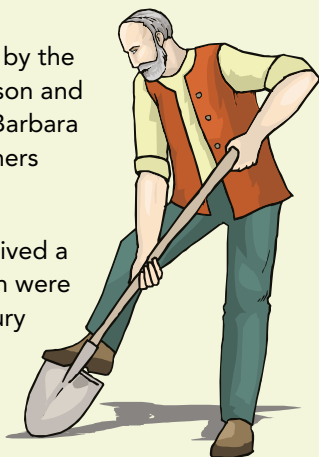
With very little rain during spring and summer, allotment holders have spent many hours watering their crops to see any yield for all their hard work earlier in the season. Despite this, there was plenty of evidence that their efforts had paid off.

The criteria for judging extended beyond simply considering the general appearance of a plot. They included the desirability for varied planting (a mixture of vegetables, fruits and flowers) and also considered factors such as composting and cleanliness.

The judges awarded prizes to the best three plots at each site, with additional prizes for Best Newcomer and Overall Winner.

The presentations were made by the Town Mayor, Cllr Allison Harrison and the Deputy Town Mayor, Cllr Barbara Russel, with the 1st place winners receiving an engraved shield.

In addition, prize winners received a certificate and vouchers, which were kindly donated by the Aylesbury Gardening Society.



## Garden Competition Awards

In our last issue you will have read about the annual garden competition and the great work the schools have done and the awards they received.

In September it was time to recognise and reward the residents, businesses and organisations for their hard work at an awards presentation evening.

This year was a particularly great year, receiving more entries than ever in the resident's category, with many people entering the competition for the first time.

The categories ranged from **Best Front Garden**, to **Best Back Garden**, **Best Edible Garden**, **Best Wildlife/Nature Garden** and **Best Container Garden**.

All residential gardens were judged by volunteer judges Sandra Ferguson, Janet Leech and Bernie Ing who are all keen gardeners. The judges were supported by Town Councillors during the four days they visited the gardens.

As always this was not an easy job as all entrants' gardens looked fantastic and really everyone was a winner. However, after much deliberation and debate the judges awarded the following:



### BEST FRONT GARDEN

Mr Gary Oselton

### BEST BACK GARDEN

Mrs Julia Keasley

### BEST EDIBLE GARDEN

Mr Christopher Adams

### BEST WILDLIFE/NATURE GARDEN

Mr Ron Murray

### BEST CONTAINER GARDEN

Mr and Mrs Peter & Margaret Walker

One of the hardest categories to judge was the **Best Communal Garden** and as the judges couldn't decide which garden was best, a joint winner was agreed upon. Florence Nightingale Hospice Charity for the hospice garden and Tony Robinson for his Canal Side Garden both won first prize. The dedication and tender loving care which was invested in both of these gardens was very clear to see.

Every year an **Overall Best Garden** winner is chosen by the judges from the residents and communal garden entrants. As the standard was extremely high this year the judges had some lengthy conversations before a majority decision was reached.

The Overall Best Garden winners of the crystal trophy for the second year running are **Mr and Mrs Peter & Margaret Walker**. The judges described their garden as amazing, perfect and stunning. A great display of what can be done in a small space, very inspirational.

The runner-up and commendation prizes were also awarded to the recipients during the awards presentation, which took place at Viney House.

For the second time a Mayor's Cup was given to businesses in the **Best Commercial Planting** category, which was won by Friars Square for the garden they created in their car park. The judges describe it as a hidden gem and shows what can be achieved with reused and recycled materials. Planting has been chosen according to the soil conditions and hours of sunshine available. The attention to detail is phenomenal, so if you haven't seen the garden yet, do take a minute or two to have a look next time you are in town. You can find the garden in the centre of the car park on level one.



The judges reiterated that all the gardens they had seen throughout the summer were simply stunning and they enjoyed seeing the great effort everyone puts in, but sadly there could only be one winner in each category. Sandra, Janet and Bernie are already looking forward to next year's judging days and to seeing how the gardens are progressing.

In addition to the garden awards the winners of the **Aylesbury in Bloom Photo Competition** also received their prizes from Snappy Snaps. **Ron Adams** whose picture was voted favourite by the public received a large canvas print, which he later on donated to the Florence Nightingale Hospice so it could be displayed in the Day Room at the Hospice, which leads on to their award winning garden. **Here is a list of all winners:**



CATEGORY	WINNER	RUNNER UP	COMMENDATION
Best Front Garden	Mr Gary Oselton	Mr and Mrs David & Lesley Ridgway	Mr Leo Maitland
Best Back Garden	Mrs Julia Keasley	Mrs Frances King	Mr George Baker
Best Edible Garden	Mr Christopher Adams	---	---
Best Container Garden	Mr and Mrs Peter & Margaret Walker	Mr and Mrs David & Lesley Ridgway	---
Best Wildlife/Nature Garden	Mr Ron Murray	Mr Darren Garner-Richards	Mr Joe Pascoe
Best Communal Garden	Florence Nightingale Hospice Charity and Tony Robinson, Canal Side Garden	---	---
Best Commercial Planting	Friars Square Shopping Centre	Hairset Hair Design Centre	---
Overall Best Garden	Mr and Mrs Peter & Margaret Walker		
Newcomer Award	Mr Darren Garner-Richards		
Photo Competition	Mr Ron Adams	Mr Bruce Santos	---

# Community News & Events



**Are you involved in a local community group or charity in Aylesbury?  
Would you like to promote your work and events?**

This magazine is delivered to every household in the Parish of Aylesbury. For more information call Judith on 01296 425678 or email: [j.priest@aylesburytowncouncil.gov.uk](mailto:j.priest@aylesburytowncouncil.gov.uk). There is no charge for community groups and charities.



- Are you ready for Christmas?
  - Need a little extra financial help?
- Contact Aylesbury Vale Community Bank:  
we're here to help you!

Aylesbury Vale Community Bank is a branch of Swan Credit Union, which spans Aylesbury, Milton Keynes, Thame and Didcot. We are different to high street banks as we're a not-for-profit cooperative – owned and run by its members. Our aim is to help people save and borrow at affordable rates.

### Apply for our NEW Child Benefit Loan today

Borrow between £250 and £500 -  
pay less than £12 per week\*

- Complete your application and send in.
- Once your Child Benefit is being paid into the Credit Union you'll receive your loan within a few days.

See our website for further details:

[www.aylesburyvalecommunitybank.org.uk](http://www.aylesburyvalecommunitybank.org.uk)

Tel: 03030 300147 e: [enquiries@swancreditunion.org](mailto:enquiries@swancreditunion.org)

Safe Savings and affordable loans from your  
local community bank

\*example only

## Keep an eye on what's happening in the town centre

If you're looking for ideas of great things to do in Aylesbury, then make sure you visit

[www.visitaylesbury.co.uk](http://www.visitaylesbury.co.uk)

This is a brand new website packed with information on entertainment, events, gigs, shopping, history, culture and places to eat and drink. You'll also find fantastic offers from town centre businesses. The site, which is a joint venture between AVDC and the Marketing Aylesbury Group, has been developed for both residents and visitors to the area.

See what it's all about at [www.visitaylesbury.co.uk](http://www.visitaylesbury.co.uk)



## Looking to volunteer?



## Friends 'Like' These?

Our vision at the Volunteer Hub is a better life for the people of Buckinghamshire, and that means putting an end to loneliness and the physical and mental issues it creates. But where do we even begin?



It starts with people like Linda from Aylesbury, who contacted us in the hope of volunteering to help an elderly person with their shopping and offering a lift in her car. After chatting

to Linda, it turns out that her love of people made her the perfect match for Carol, a woman affected by disability. Linda and Carol get together for an hour every week and go to the gardening centre for a coffee and stroll – a simple experience with life-changing potential.

*"I work part time but have spare time on Fridays and wanted to do something fulfilling. The whole experience has been so positive. I really enjoy seeing Carol and how much she looks forward to it. I would definitely consider her to be a real friend."*

So, if your social network is in need of some real-life connection and you would like to volunteer to help someone in your community as a friend like Linda or taking your neighbour shopping; why not give us a call to find you a match?

For more information about volunteering, call the Volunteer Hub on **0300 1111 250** or email [info@communityimpactbucks.org.uk](mailto:info@communityimpactbucks.org.uk)

The Volunteer Hub actively recruits volunteers for charities and groups in Buckinghamshire who support older and vulnerable adults as part of Buckinghamshire County Council's Prevention Matters programme.





## £200,000 Available for Grants

Heart of Bucks has over £200,000 of funding currently available to support not-for-profit projects across the county!

Our mission is to encourage and enable localised 'giving back', so that together we can fund charitable projects across the county. In our last financial year, we gave over £800,000 in grants and loans with the aim of helping not-for-profit organisations to improve, enhance and better the lives of over 78,000 people in Buckinghamshire. As well as our general fund, which covers our grant-making throughout the year and across the charity spectrum, we have some additional funding available.

As Buckinghamshire's Community Foundation, we recognise that we live in a county of contrasts, rarely conceived of as being a place of great need – but whose visible wealth often camouflages the very real deprivation affecting people every day. Our funding seeks to empower local people, by enabling them to create lasting change within the communities in which they live and work.

Thanks to the generosity of our Bucks-based supporters, we've given over £6,000,000 to community projects across the county since 2000. We help the homeless and the hungry, the elderly and the young, the disabled, the disadvantaged, and everyone in between!

All of our funds do come with their own individual criteria – so we'd like to invite not-for-profit organisations carrying out great projects across the county to visit our website and consider whether these exciting opportunities for funding could benefit their projects.

For further information, please visit our website [www.heartofbucks.org](http://www.heartofbucks.org) or contact us on **01296 330134**.



## Young People Matter to Aylesbury

### Twelve new companies are planning for the Christmas Market

In a month's time students taking part in the Young Enterprise (YE) Company Programme will be gearing up for the Christmas Market. This is an important time for them as it will allow them to experience selling at first hand and of course offers an important outlet for them to raise much needed cash for their new companies.

They will be responsible for setting up their trade stands, using eye catching marketing ideas from their marketing department and gauging their pricing structure to capture their market segment. Also, they should ensure that they have appropriate customer satisfaction policies in place to support their customers and products.

Whilst this is a very exciting time for our young entrepreneurs it is also a bit scary as it is stepping into the world of work for real. For most them it will be their first experience of selling directly to the public. Keep a look out in Aylesbury for the Christmas Market on the 6th December.

Many of the companies also take their trade to the Milton Keynes Trade Fair on the 31st January 2016 where over 60 schools from neighbouring counties compete for business. Together with the dedication of the teachers, the Company Programme relies on the expertise of our volunteer business advisers from the Aylesbury business community. Without the financial and professional support from those businesses none of this would be possible.

YE actively encourages more businesses to become involved in this Action Learning programme in order to help to improve the employability skills of the young people in the area.

For more information please contact Young Enterprise on **07834 606230** or email: [jackie.bryant@y-e.org.uk](mailto:jackie.bryant@y-e.org.uk)

Visit the ATC website to keep up to date with local events:  
[www.aylesburytowncouncil.gov.uk](http://www.aylesburytowncouncil.gov.uk)



# Community News & Events



## BreastFriends Aylesbury

Breast cancer has recently been hitting the headlines once again, perhaps unsurprisingly, since this illness is the single most common cause of death in the UK in women aged 35 – 54 years. Shockingly, one in eight women will develop breast cancer in their lifetime.

BreastFriends is a small Aylesbury based support group run entirely by volunteers and offers a listening ear as well as practical, confidential support to those who have been affected by breast cancer.

The group was formed a few years ago by several ladies who wanted to ensure that others in the Aylesbury area would not feel the same isolation that they had experienced following their diagnosis of breast cancer.

Members of BreastFriends meet once a month, usually at Mandeville School, Ellen Road, Aylesbury, on the first Tuesday of each month, 7.00pm - 9.00pm. There is the opportunity to get together for a chat over tea and biscuits in a supportive and informal atmosphere. The monthly meetings often include guest speakers and other social events.

Whether you have just been diagnosed, are currently undergoing treatment or completed your active treatment a while ago, the group offers emotional support and practical, up-to-date information. Above all, the group offers an understanding voice at the end of the phone should you ever need it.

If you or someone you care about has been affected by breast cancer, please take a look at our website: [www.breastfriends-aylesbury.org.uk](http://www.breastfriends-aylesbury.org.uk). Alternatively if you prefer, please call Jan on **01844 290362**.

---

## Town Centre Events 2016

**26 January** 9.00am – 2.00pm, Market Square  
Find fresh and fantastic local produce at **Aylesbury Farmers' Market**

**18 February** 11.00am – 3.00pm, Kingsbury  
**Half Term High Ropes and Spider Mountain**  
Burn off some energy and see Kingsbury from a bird's-eye view at this popular event! #AylesburyThursdays



## Buckinghamshire Gardens Trust

*To record and conserve the gardens and parks of historic Buckinghamshire  
To aid in the creation and restoration of gardens, parks and green spaces  
within the historic county*

### 'Understanding Historic Parks and Gardens in Buckinghamshire' & The Buckinghamshire Gardens Trust's Research & Recording Project

The Buckinghamshire Gardens Trust was founded in 1997 in order to encourage interest in the historic, and more recently created, parks and gardens of Bucks.

To help fulfil this aim we hold an annual series of Spring Talks at the County Museum in Aylesbury, and during the summer month arrange a programme of visits to sites of interest, both in Buckinghamshire and further afield.

We have undertaken a successful project encouraging gardening in Buckinghamshire schools, and recently have embarked upon an important project to research and record historic sites in the county – as identified by the Bucks County Council Environment Record – which have no protection under the English Heritage Register of Historic Parks and Gardens.



Funding for a pilot project was provided by the Heritage Lottery Fund and sixteen dossiers of information, on vulnerable sites, have been lodged with the Bucks County Council's

Historic Environment Record in order to advise planners, owners and the decision makers involved in the management of potential changes to these sites.

Twenty volunteers have been trained in research and recording methods, by a professional trainer, and this important work has been further facilitated by grant aid from the Stanley Smith (UK) Horticultural Trust and the Finnis Scott Foundation.

If you are interested, or would like to learn more about in the work of the Bucks Gardens Trust, please contact: Rosemary Jury at: [rosemary@jury11.fsnet.uk](mailto:rosemary@jury11.fsnet.uk)



## Looking to volunteer?



Buckinghamshire Mind is an independent charity affiliated to National Mind, working to support and represent people with mental health needs in the local community.

We do this through providing high quality services including Activity Groups and Peer Support, Befriending, Employment Support and Counselling. We work to provide a voice for people with mental health needs and are committed to making sure our services are inclusive and meet the diverse needs of people in Buckinghamshire.

Three years ago Nicolette could no longer see a future after the breakdown of family life and deep depression. Struggling to find help she was referred to one of our social/activity groups supported by experienced Wellbeing Workers who offer a safe, comfortable and fun place to socialise, try new things and receive support.

*"This group has been a lifeline and the support from the staff has been invaluable as has the friendships that have been made with others who have had similar experiences"* said Nicolette who has attended regularly since her referral three years ago.

Nicolette is now looking to the future and wants to help others who are in need of support. She has participated in the Buckinghamshire Mind Volunteer Training day and will shortly be volunteering within our groups and as a Befriender.

If you are interested in the services offered by Buckinghamshire Mind or would like to become a volunteer please contact our Head Office **01296 437328** or visit our website [www.bucksmind.org.uk](http://www.bucksmind.org.uk) for further details.

**Julia Thornton**  
Area Coordinator



## 30 Anniversary Miles for the Chilterns MS Centre

The 'Walk the MS mile' fundraising initiative to mark the 30th Anniversary of the Chilterns MS Centre has been a huge success. 'Walk the MS mile' involved members and supporters of the charity walking a mile each day in September at 30 different locations.

The Aylesbury mile saw 45 walkers and wheelers take in a route through Vale Park in the sunshine. The fundraising target of £30,000 has been totally smashed with over £62,000 in sponsorship and donations going to this worthy cause that supports local people with Multiple Sclerosis (MS).

Over 750 walkers, wheelers and pushers, including school children, took part in the walks. For some of the participants, many of whom have MS, it was a challenge to join their local mile. MS is endlessly variable, totally unpredictable and can lead to disability. The Centre helps on several levels; practically, emotionally and socially.

'Walk the MS mile' has been supported by local businesses with generous donations of time, money and vital sustenance for the walkers. The charity has already received calls from potential new patients, another aim of the initiative as it believes there are still hundreds with MS in the local community that they could help, and it was a truly fitting way to mark the 30th anniversary.

The money raised will go towards the £900,000 it takes for the Centre to deliver over 17,000 sessions of treatments such as physiotherapy, acupuncture, hydrotherapy and hyperbaric oxygen therapy to its current 483 members each year.

Contacts and further information on **01296 696133** or email: [fundraising@chilternsmcentre.org](mailto:fundraising@chilternsmcentre.org)  
The Chilterns MS Centre, Oakwood Close, Wendover, Bucks HP22 5LX Registered Charity 800853





# ATC News

## Aylesbury Talking Newspapers

In January 1970 the first Talking Newspaper was formed in Aberystwyth, and recordings sent out to listeners in Cardiganshire.

In those early days no one envisaged that, more than 40 years later, there would be over 500 groups across the UK and more than 100,000 listeners.

Aylesbury Town Council has teamed up with Aylesbury Talking Newspaper Association (ATNA), a group of dedicated volunteers who read, record and distribute an audio version of our quarterly Aylesbury Town Matters magazine, to ensure everyone has access to community news.

**Do you have friends, family or neighbours who have poor sight – or have any other disability that prevents them from reading books, newspapers and magazines but would still like to stay informed and know what is happening in the Parish of Aylesbury Town?**

If the answer is yes, than please do get in touch with Christine at ATNA direct on **01296 428861** or email [aylesburytn@yahoo.co.uk](mailto:aylesburytn@yahoo.co.uk) who will make the necessary arrangements for you.

The service is free and the audio version is delivered on a USB stick which can be used with a wide range of audio equipment such as computers, radios, etc. If you don't have any audio equipment which is compatible with USB, than ATNA may even be able to provide you with a listening device.

Being able to see the printed word is something a lot of us take for granted. Blind and partially sighted people don't have this opportunity, so please let your friends, family and neighbours know of this service.

ATNA also record The Bucks Herald on a weekly basis, which is sent to service subscribers in the Vale of Aylesbury.



*ATC invites your comments and correspondence... we'd love to hear from you!*



**If you have thoughts about the town we'd like you to express them through this magazine.**

What do you think of the events that take place in the town centre? How do you feel about the town in general? Do you have fresh ideas? What bothers you? We'd like to know.

You can send an email marked 'ATM Letters' to: [info@aylesburytowncouncil.co.uk](mailto:info@aylesburytowncouncil.co.uk) or write to us at: **Aylesbury Town Council, Town Hall, 5 Church Street, Aylesbury, Bucks HP20 2QP.**

Please do give us your name and contact details so that we can reply to you.

## Accessing Disabled Toilets: RADAR Keys



A RADAR key is a large key, which opens more than 9,000 accessible toilets in the UK, which can be found in public areas, office blocks, pubs or restaurants.

RADAR is a national key scheme, which allows people who need to use a locked disabled loo to 'go' in peace, and quickly, without the indignity of asking someone if they can use the toilet.

The first Radar toilet opened in 1981. Since then, more than 400 local authorities and thousands of businesses have joined the scheme.

RADAR keys can now be purchased from the Town Council offices at 5 Church Street, Aylesbury, Bucks HP20 2QP or ordered by calling the office on **01296 425678**. The cost per key is £4.00 and if you would like us to post them to you an additional charge of £1 for postage and packaging applies.

## Looking for meeting room hire?

### Town Hall Facilities

The Town Council hires out the Council Chamber for meetings and other similar events, full details can be found here: [www.aylesburytowncouncil.gov.uk/the-chamber](http://www.aylesburytowncouncil.gov.uk/the-chamber).

To check availability of the Council Chamber please contact the Town Council on **01296 425678**.

*See the inside front cover for all the Festive Events in the town centre during November and December*





## **Aylesbury Town Council** **TOWN MAYOR'S AWARDS 2015/2016**

Town Mayor Cllr Allison Harrison, is delighted to present awards to Aylesbury Residents who have been nominated for performing an unusual act of bravery, an achievement (not standard exam passes), a commitment or an act beyond the call of duty for fellow citizens of the town in general. Anyone can nominate a fellow citizen.

**CRITERIA:** The nominee's contribution to the individual, group or community will be taken into consideration, and the Panel of Judges will also be looking for exceptional effort; innovation or enterprise in the service being offered; outstanding achievement and length of service.

The Award will cover two categories:

**INDIVIDUAL ACHIEVEMENT, COMMITMENT OR ACT OF BRAVERY:**

**Award 1:** Child/Youth up to 16 years of age    **Award 2:** Adult

**SERVICE TO THE COMMUNITY:**

**Award 3:** Group, School or Organisation    **Award 4:** Individual, Youth/Adult

**Closing date for nominations is Friday 1st April 2016.**

Winners and their guest will be invited by the Mayor to the Annual Mayor Making Reception in May 2016 to receive their awards. If you know of an Aylesbury Town Resident that you would like to nominate, please visit our website for an entry form or contact Sue Carpenter, Mayor's Assistant on **01296 425678** or email [s.carpenter@aylesburytowncouncil.gov.uk](mailto:s.carpenter@aylesburytowncouncil.gov.uk)



*Aylesbury Town Mayor  
Cllr Allison Harrison  
cordially invites you to her*

### **MAYOR'S CAROL SERVICE**

**Sunday December 6th**

**5.30p.m. to 7.00p.m.**

**St Mary's Church, Aylesbury**

*Mulled wine and mince pies served following  
the service*



## Heritage Open Days 2015

On the second weekend of September historic locations and venues opened their doors for the public all over England. Heritage Open Days is England's biggest festival of history. This year just under 5,000 events took place between 10th and 13th September and seventeen of those were in Aylesbury alone.

Visitors came to Aylesbury from as far as Eastbourne, Didcot, Hitchin, Cambridge, surrounding villages and counties and even some from overseas.

Aylesbury Timescapes Exhibition in the Old County Hall was very popular. It was put together by local historian and photographer Karl Vaughan, whose clever merging of modern and old photographs showed the town as it has developed and changed over the years.

Roger King from The Aylesbury Society led a popular Heritage Walk around the old town. Other events included tours of the Judges Lodgings; the Crown Court, where Judge Sheridan amused everyone with anecdotes; the cemetery, as well as the opening of the Literary Club, St Mary's Bell Tower, the Mayor's Parlour and many more.

For the first time, this year, the Blue Leanie opened its doors on the Sunday and over 100 people came to see a display of how the Blue Leanie was designed and built.

If you missed out on any of the events, locations and tours this year make a note in your diary of Heritage Open Days, which will take place on **8th to 11th September 2016**.

If you don't want to wait that long you can purchase one of the Heritage Walk Guides which are available at £1 from the Visitor Information Centre in the King's Head Passage, off Market Square. This fascinating self-guided walk gives you an insight into the town's architectural history spanning many centuries. Full of interesting facts about Aylesbury's past, the walk is a leisurely route that can be followed in about an hour.

**How well do you know the Heritage and History of Aylesbury? Over the coming issues we will be bringing you interesting facts, figures, stories and anecdotes about Aylesbury.**



???

**Do you know why Euclid Neale, a famous name, is connected with Aylesbury?**

Euclid Neale, opened a clockmaking shop in Aylesbury back in 1764. By the 18th century he was regarded as one of the best clockmakers in the country.

???



# Aylesbury Town Council Grants

If you are involved in a charitable or voluntary organisation in Aylesbury you could apply for a match funded grant from Aylesbury Town Council. Grants can be awarded to support a project, event or service. We are also keen to support young people in sport. Sports Grants are available to help outstanding individuals fulfil their sporting potential. **To find out more visit our website or call 01296 425678.**

## Grants Open Day

On Thursday 17th September 2015 we held our second Grants Open Day in the Aylesbury Town Council Chamber. It was an opportunity for all those interested in applying for grants, or who had been unsuccessful in the past, to meet the clerk and councillors for information and advice, especially small groups or new projects in the town.

Our small grants have benefited many community activities from lunch clubs, interest groups and outings for senior residents to clubs and projects for young people. Funding has been given to established charities for training of volunteers working in Aylesbury, which has increased the support given to local people.

At the Open Day there was interest from a wide range of organisations wishing to provide support for the homeless, build a community meeting space, purchase the equipment needed to run a creative activity for young people and a 'drop-in centre' to extend a service to those who need practical help and support to put their lives back on track. Not only did the discussions between the potential applicants raise awareness of their new initiatives, it also identified areas of common interest and future opportunities to work together.

Some enquiries did not match the Town Council Grants criteria, as the activity or service was outside of the Parish administered by Aylesbury Town Council, so help and advice was given to suggest the most appropriate funding sources.

Feedback from past applicants have kept the committee well informed as to how effective the grants have been, though nothing would be possible without the many residents who give their time so freely and make a huge difference in the community.

If you want more information on Aylesbury Town Council Grants look out for the next Q and A session or contact the Committee Clerk **Belle Dayton**.

## Grants Awarded

During the last six months the Grants Committee has awarded grants to the **Aylesbury Old Town Residents' Association (AOTRA)** for the 2015 Big Lunch which was held in St Mary's churchyard in June this year. The event attracted over 200 local residents, their families and friends. **Grant awarded £500.**

**£2,000** was awarded to **MASK** who offer a series of courses designed, in part, as an intervention for young people who are in danger of exclusion from education due to poorly presenting behaviours in school. MASK creates an atmosphere away from the school where the value of education and learning are re-established via the use of physical training in martial arts. They also provide ongoing support and have an outreach system in place for young people.

**Something Better**, a group for the over 60s who meet at Southcourt Baptist Church on Penn Road, Aylesbury, received a grant of **£941** from Aylesbury Town Council for the cost of transport.



**Should you wish to apply for a grant please contact our Grants Officer, Belle Dayton on 01296 425678 or if you prefer email: [b.daytonn@aylesburytowncouncil.gov.uk](mailto:b.daytonn@aylesburytowncouncil.gov.uk)**



# Aylesbury Town Council Ward Map

## Ward: Gatehouse



Cllr Anders Christensen  
07834 995690



Cllr Tuffail Hussain  
07832 913171



Cllr Graham Moore  
07886 369565

## Ward: Central



Cllr Barbara Russel  
01296 431314



Cllr Edward Sims  
07580 703275

## Ward: Elmhurst



Cllr Susan Morgan  
07799 074411



Cllr Jenny Puddefoot  
01296 612461

## Ward: Coppice Way



Cllr Mark White  
07447 907798

## Ward: Oakfield



Cllr Allison Harrison  
07795 210808



Cllr Mark Willis  
07723 091637

## Ward: Quarrendon



Cllr Chris Adams  
07968 444222



Cllr Andy Huxley  
07711 837938

## Ward: Oxford Road



Cllr Stuart Jarvis  
07958 083519



Cllr Mike Smith  
07854 178012

## Ward: Southcourt



Cllr Peter Agoro  
07548 952762



Cllr Mark Bateman  
07858 973643

## Ward: Walton Court



Cllr Ranjula Takodra MBE  
07958 423083

## Ward: Hawkslade



Cllr Brian Adams  
07855 299999

## Ward: Walton



Cllr Bill Chapple OBE  
07702 031712

## Ward: Mandeville & Elm Farm



Cllr Sue Chapple  
01296 426814



Cllr Richard Lloyd  
07887 685345



Cllr Denise Summers  
01296 424903

## Ward: Bedgrove



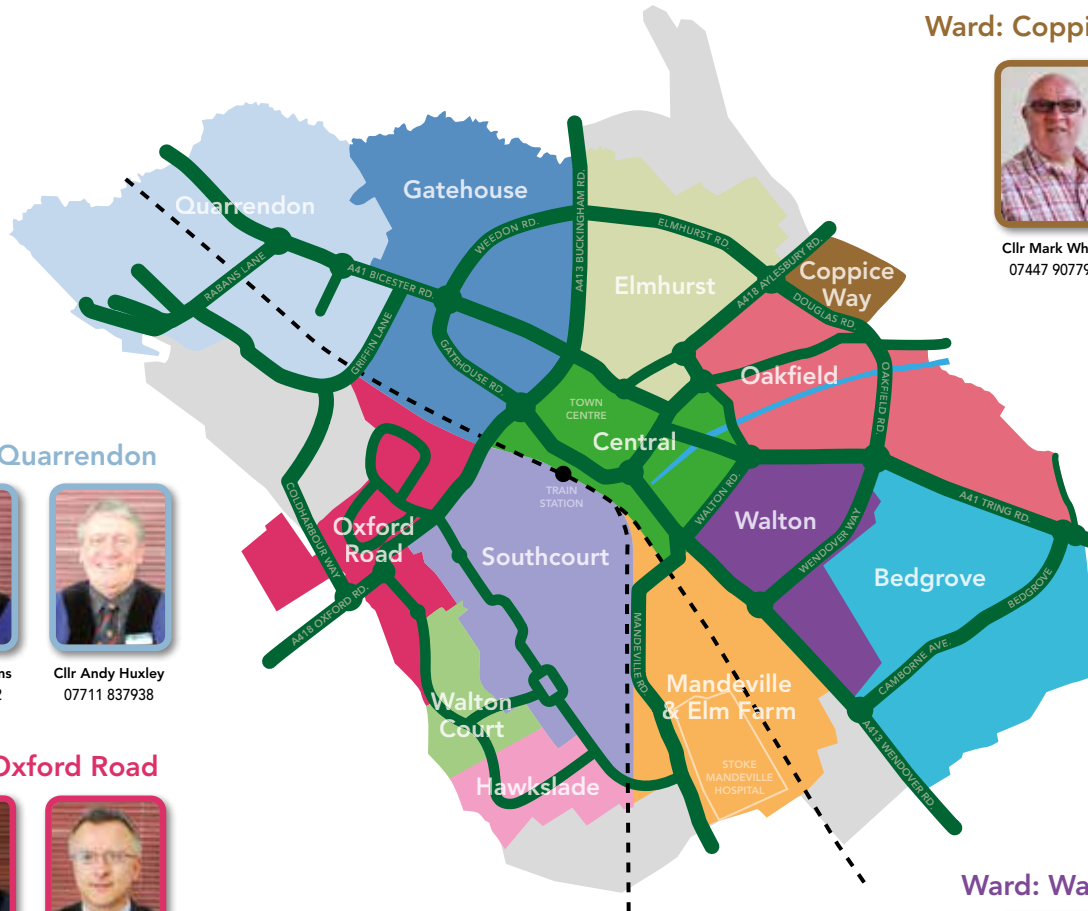
Cllr Jenny Bloom  
01296 434123



Cllr Tom Hunter-Watts  
07595 178660



Cllr Mark Winn  
01296 393304





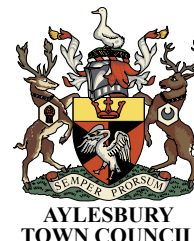


## Council Services

### Who do I talk to about? ...

#### AYLESBURY TOWN COUNCIL IS RESPONSIBLE FOR:

- Office of the Mayor and Mayoral engagements
- Management of the seven allotment sites
- Tring Road Cemetery
- Devolved Services – grass cutting, tree works etc.
- Support Twinning of Aylesbury with Bourg-en-Bresse
- A programme of events throughout the year such as Parklife, Tudor Fayre, Aylesbury on Sea, Christmas and Summer events along with other free events
- Award of grants to local groups and charities
- Free quarterly magazine, Aylesbury Town Matters
- Britain in Bloom (a partnership project) and Aylesbury in Bloom (hanging baskets, planters, floral beds, roundabouts and more)



**Aylesbury Town Council** is the council closest to the residents in the parish of Aylesbury. The Town Council is here to be a voice for the residents by representing their views on issues affecting them.  
Call: **01296 425 678** or visit: [www.aylesburytowncouncil.gov.uk](http://www.aylesburytowncouncil.gov.uk)

#### AVDC IS RESPONSIBLE FOR:

- Collection of Council Tax and business rates
- Household recycling and waste disposal
- Local planning and building regulations
- Public car parks
- Licensing and Environmental Health
- Leisure Services (including Aqua Vale and all parks)
- Award of grants to local groups and charities



**Aylesbury Vale District Council** deal with issues covering the whole of Aylesbury Vale and has a very regulatory remit. Call: **01296 585 858** or visit: [www.aylesburyvaledc.gov.uk](http://www.aylesburyvaledc.gov.uk)

#### BUCKS COUNTY COUNCIL IS RESPONSIBLE FOR:

- Highways
- Education and Libraries
- Social Services
- Trading Standards
- Registrar of births, deaths and marriages
- Waste disposal (excluding household waste)



**Bucks County Council** is the top tier of local government and provides services on a county-wide basis.  
Call: **01296 395 000** or visit: [www.buckscc.gov.uk](http://www.buckscc.gov.uk)



## A Panto for the Whole Family

The **Queens Park Arts Centre Pantomime** returns at the Limelight Theatre this December with a brand-new adaptation of the timeless fairy-tale 'Beauty and the Beast'. It tells the magical story of young Rosalind, who sets out to save her impoverished family by venturing into the Castle of the Fallen Prince – wherein lives the fearsome Beast of Folly...

The latest pantomime spectacular from Queens Park Arts Centre promises to feature plenty of audience participation, catchy songs, hilarious slapstick routines and beautiful handmade costumes, sets and props created by the Centre's artists, tutors and volunteers.

Directed by local actress and director Erika Sanderson, and written by Limelight Theatre Manager Dario Knight, the show will once again feature performers from the Susan Diane School of Dance, and is the first panto to be produced by the Centre's in-house storytelling programme Unbound. The cast includes an array of local talent, including audience favourites Malcolm Emms and Steve Davies, playing ugly sisters Gilda and Gertrude.

The show runs from 11th – 28th December with various performance times. Tickets are £12.50 for adults, £8.50 concessions and £6.50 U16s. The Box Office can be contacted on **01296 424332** or visit [www.qpc.org](http://www.qpc.org)

## 'Presumed Extinct' Debut Novel



**Presumed Extinct** is the debut novel from Aylesbury based author Lynda Osborne. Set in Tasmania it is a cross-over novel aimed at young adults and adults young at heart, who enjoy a good adventure.

**Presumed Extinct** tells the story of how an English boy, Hugh Whitaker, who accompanied his father, a veterinary oncologist on a year long secondment to Tasmania to work on a cure for the disease decimating the Tasmanian devil population. Here, Hugh discovers the existence of a Thylacine or Tasmanian Tiger, last sighted in 1936. Seeped in urban legend, the Thylacine is subject to a bounty of \$1.75 million Australian dollars for proof of life. Hugh, and new friend, Connie Sampi, a native indigenous Tasmanian must protect the creature from the exploits of unscrupulous park ranger Spencer Tate, who will stop at nothing... even murder to get his hands on the animal.

The book is published by Pegasus Pony, an imprint of Pegasus Books USA and available in paperback or Kindle versions via Amazon. For details on the Save the Tasmanian Devil campaign see: [www.tassiedevil.com.au/tasdevil.nsf](http://www.tassiedevil.com.au/tasdevil.nsf)

## Competition

For your chance to win one of two signed copies of the book send your answer to the following question **'What is the binomial name of the Tasmanian Tiger?'** to Aylesbury Town Council, Town Hall, 5 Church Street, Aylesbury, HP20 2QP or by email to: [info@aylesburytowncouncil.gov.uk](mailto:info@aylesburytowncouncil.gov.uk) by 21st December 2015.

## J's Joyful Divas

**J's Joyful Divas** is a small fun ladies choir. We sing a diverse and eclectic mix of songs from across the decades. Our weekly rehearsals are Wednesday evening 7.30 – 9.00pm at the Guardian Angels R. C. Church Hall, 6 Chaloner Road, Aylesbury, HP21 8NN. If you enjoy singing and are interested in joining our choir or would like to book us for your event contact us at: [jsjoyfuldivas@gmail.com](mailto:jsjoyfuldivas@gmail.com) or call us on **07909 531 683**. See us at [www.jsjoyfuldivas.weebly.com](http://www.jsjoyfuldivas.weebly.com) and [www.facebook.com/joyfuldivas](http://www.facebook.com/joyfuldivas)

## Jubilee Players



**Aladdin** – Ben Crocker's version of this well-loved pantomime will be staged by the Jubilee Players at the Jubilee Hall, Bierton from Thursday 3rd to Saturday 5th December. Performances are at 7.30pm each evening, with a matinée on Saturday at 2.30pm. Refreshments will be available during the interval. Admission is £8 for adults and £5 for children. Contact Alf Rogers on **01296 415565** or by email: [alfred.g.rogers@btinternet.com](mailto:alfred.g.rogers@btinternet.com). There'll be plenty of laughs and audience participation. Bring the family along and join in the fun.



## Barbara Shaw

Barbara creates art in textiles. She 'paints' with fabric, making images by hand-stitching small pieces of material together in layers. She interprets subjects in a fresh way which encourages viewers to take a second look.



Barbara is a self-taught artist having started experimenting with fabrics after sewing patchwork quilts. Her work includes elements of both art and craft which reflects her interest in Impressionist paintings and the process of handcrafting. The subjects she stitches

include buildings, creatures, plants, landscapes and still lifes. However, it is her sheep pictures which have captured people's imagination (she is now up to #11) and to go with her 'flock' she has created a sheep dog.

For further information about Barbara's work, where she is exhibiting or to contact her please visit [www.artintextiles.co.uk](http://www.artintextiles.co.uk) or find her on [facebook.com/artintextiles](https://www.facebook.com/artintextiles) or [twitter.com/art\\_in\\_textiles](https://twitter.com/art_in_textiles).

Originals, limited edition prints and cards for sale and commissions are welcome.

## Aylesbury Symphony Orchestra

To round off the 2014/15 season the Aylesbury Symphony Orchestra gave a sell-out performance of magical and majestic film scores in a family concert at St Mary's Church.

Under the baton of acclaimed conductor Ben Palmer, the orchestra is going from strength to strength, and has undergone a contemporary rebrand, reaching out to the younger generation as both audience members and future players. The ASO Wind Trio delighted a packed audience with a tea concert at Rumsey's in Thame as part of the Thame Literary Festival in October.

Our 2015/16 season opened with a celebration of Brahms, and on 7th February 2016 we present a programme inspired by the Scottish landscape and folklore.

For further information on ticket prices, vacancies and upcoming concert details please visit [www.aylesburyorchestra.co.uk](http://www.aylesburyorchestra.co.uk)

## What's on at Bucks County Museum

### Off the Wall Art Fair until 12 December 2015

This popular selling show is the perfect place to buy unique gifts for Christmas at affordable prices and you can take them away on the day. There is an opportunity to talk to some of the exhibiting artists and see more of their work on 28th November between 11.00am and 3.00pm. Artist Peter Keegan is giving a demonstration of landscape painting on 5th December from 11.00am to 2.30pm. The exhibition is organised by the Friends and Patrons in aid of the museum.



Bucks WI rally at Cliveden in 1933

### 100 Years of the WI Exhibition

An enthralling exhibition celebrating the centenary of this famous organisation through its work in

wartime, the community, health, education as well as friendship and fun. The exhibition has been put together by the County Museum and Bucks Federations of WIs and WI branches have helped with loans as well as modern examples of craftwork produced at Denman College in Oxfordshire – the national HQ for WI Education Programmes. **Free entry. Exhibition runs until 20th February 2016.**

### PHOTOGRAPHY! the work of the British Institute of Professional Photography

16 January – 5 March 2016

Be inspired by some of the best photographers in the world and discover more about the professional side of photography. A chance to see stunning and exciting images including portraits, landscapes, architecture, advertising and fine art. **Free entry.**

### Winter University Lecture Series

Each lecture is delivered by a leading academic in their field with free refreshments during a short interval to give participants time to enjoy the evening and meet like-minded people.

#### Face Value? History from Roman Coins

Wednesday 20 January, 6.30pm – 8.00pm

Lecture by author Dr Susan Fern

#### Wolves and Wildcats: surviving the end of the last Ice Age in Somerset

Thursday 18 February, 6.30pm – 8.00pm

Lecture by Prof Danielle Shreve, Royal Holloway, University of London

Tickets £7.50 each - or book 3 lectures for £15.00.

For more information and the full list of lectures and to book call **01296 331441** or visit:

[www.buckscountymuseum.org](http://www.buckscountymuseum.org) Bucks County Museum and Roald Dahl Children's Gallery, Church Street, Aylesbury, HP20 2QP



# ATC News

## Town Mayor's Update

As the winter evenings draw in and with Christmas on the horizon, we look back on what has been a busy summer and autumn for Aylesbury's Town Mayor, Cllr Allison Harrison.

We remember wonderful warm sunny days at Aylesbury on Sea, the Tudor Fayre and the fantastic weekend of live music, family entertainment and fireworks at Live in the Park and Proms in the Park, during the Parklife Weekend in August.

The Mayor was privileged to have been invited to so many interesting and varied events over the past few months, in and around Aylesbury. Getting to meet so many local residents, groups and businesses really is a pleasure. Allison was honored to be invited by the Cadets and staff from the Buckinghamshire Rifles (ACF), based at Viney House, to their Visitors Day during Annual Camp weekend in Shrewsbury. Allison watched the Cadets in action and even took part with them in rifle control, first aid demonstrations and other activities. She was very impressed by all the Cadets, who showed enthusiasm, dedication and maturity in the tasks they were asked to carry out.

Allison had lots of fun and met many local children at a number of school events, including Aylesbury Grammar School's prize giving, Oak Green School's assembly morning and helping Pebble Brook School celebrate their 50th birthday.



We have welcomed a number of new businesses to the town, which the Mayor was privileged to be a part of. Aylesbury Performing Arts, run by Katie Ford and Lyndsey Aldred launched their classes in September, HomeSense joined us at Cambridge Street retail park and the Metro Bank opened with fun and flourish in Market Square, with Allison happily cutting the ribbon at them all.

A number of visitors came to the Mayor's parlour and Town Hall during Heritage Open Day, where the town's paintings and silverware were on display. The Mayor had the pleasure to meet many local residents and some visitors from as far away as Cambridge, Sussex and even New Zealand!

The Mayor has been busy supporting and fundraising for her charity, CUP, hosting a family quiz night and afternoon tea. We are currently planning some exciting fundraisers for the New Year, where the Mayor is delighted to be hosting an Adult Comedy Evening in March and a Charity Ball in April. To register your interest in attending these events, or for more information please contact the Mayor's Office.

Lastly, the Mayor would like to invite you to join her at St Mary's Church for the Mayor's Carol Service on Sunday 6th December, at 5.30pm – everyone is welcome. Allison extends her warmest wishes to you all for the festive season.

Sue Carpenter

**If you would like to invite the Mayor to attend an event you are holding, please contact the Mayor's Assistant Sue Carpenter at the Mayor's Office by calling 01296 425678 or email: [s.carpenter@aylesburytowncouncil.gov.uk](mailto:s.carpenter@aylesburytowncouncil.gov.uk)**





## Adventurous Week for Booker Park Students

Students at Booker Park School were treated to snow, canoeing, rock climbing, drumming and circus skills workshops as part of their alternative curriculum week. 67 students aged 3 - 11 years benefitted from this extra special week, enabling them to take part in activities that may otherwise not be available to them.

The students taking part have a variety of special needs including those with profound and multiple learning difficulties, and those with autism and sensory processing difficulties.

The week was made possible following a grant from the William Harding Trust. The trusts generosity not only funded the activity week, but also allowed the school to install a state of the art pool lift allowing easier access for swimming and a mobility platform for wheelchair users to enable them more freedom and assistance with therapy sessions.

Principal Chris Ludlow said: *"It was a fun filled week for our students; some of these activities were once in a lifetime experiences which would not otherwise have been accessible. The week was a huge success and something we hope to continue in the future."*



## Making the Most of the Outdoors

At Haydon Abbey School and Preschool we believe our outdoor environment is very important, so when the opportunity arose for us to take part in a County initiative to develop an on-site Forest School area we took it on whole-heartedly. We trained five members of staff to be qualified Forest School leaders across the school, enabling every year group to be able to take part.

Recently our youngest children in our preschool have been going to Forest School once a week, learning all about the rules and how to keep themselves safe – at just two years old the children know not to pick or lick anything growing and to stay on the outside of the fire circle.



The purpose of Forest School is to provide child led uninterrupted learning where the children are free to explore, solve problems, work together and communicate within a safe environment, developing their self-confidence, self-esteem and well-being.

Since beginning Forest School the children have enjoyed a range of activities including building dens, hunting for minibeasts, experimenting in the digging pit, making mud pies, playing leaf snap, identifying flowers, building with natural materials and making pictures out of natural materials to name just a few.

## Students Help Build Railway Engineering Workshop



Buckinghamshire University Technical College's (UTC) Construction students have been helping to build a new engineering workshop at the wholly volunteer run Chinnor & Princes Risborough Heritage Railway, as part of their 'real life' project experience programme.

The students, who are studying for their BTEC Level 3 Certificate, Diploma & Extended Diploma in Construction and the Built Environment, laid blockwork below the steel clad walls of the engineering workshop, to complete this phase of the project. The building, part of a new Restoration and Education Centre (REC), will enhance the working environment for the railway's volunteer work force by providing covered accommodation for the restoration of its coaches, locomotives and other rolling stock.

Alan Jeffries, Chinnor Railway's REC Co-ordinator, said: *"Despite the scorching weather a dozen eager students put their construction skills to great use for us. This is our second project with Bucks UTC's students, as they helped us restore our signal box earlier in the year. It's great to have them 'on board' and with the railway's expansion plans; we've lots of other opportunities for them!"*



## Ladies to Benefit from New Sports Programme

Women and girls in Aylesbury Vale are set to benefit from nearly £135,000 of funding to enable them to get more active.

The cash, awarded to Aylesbury Vale District Council by Sport England, will be used to deliver a three year programme of sports and physical activities. Ladies aged 14-40 are being targeted as research shows this group particularly struggle to achieve their recommended 3 x 30 minutes of exercise per week.

Starting in January, the Active Vale programme will include a range of activities including swimming, running, Nordic walking, gym classes and team sports. Whether you're looking for a way of de-stressing after a busy day, want to challenge yourself, or you just fancy making some new friends; Active Vale will provide fitness in a fun and friendly environment.

The programme will kick off in January 2016 with women and girl's only swimming lessons, before expanding to include other activities.

Visit [www.aylesburyvaledc.gov.uk/active-vale](http://www.aylesburyvaledc.gov.uk/active-vale) for more information about the programme or email: [activevale@aylesburyvaledc.gov.uk](mailto:activevale@aylesburyvaledc.gov.uk) to register your interest.



## Aylesbury United Walking Football Club

Aylesbury United Walking Football Club was formed in October 2014. The game, a variation of seven-a-side, is aimed primarily at the over 50s, although we don't discriminate on the grounds of age, gender or ability.

We exist to give people a route into football who would be otherwise excluded from the conventional game. Our ages range from 16 to 80! The major differences between this and seven-a-side, apart from the walking, is the ball isn't allowed above head height, free kicks are indirect and contact is kept to a minimum.

We're affiliated with Aylesbury United F.C. and members of the Berks and Bucks F.A., but otherwise we are an autonomous group with an active committee. We've played in tournaments in Brackley, Oxford, Aylesbury and Hampshire and competed in National Tournament reaching the regional stage.

Come and join us on a Monday night at the Meadowcroft Astro turf at 6.45pm for a 7.00pm start. All you need to bring with you are a decent pair of trainers, comfy clothes, £3.00 subs (first week free), a drink and plenty of enthusiasm. We ask for a modest signing on fee and ask you to fill in a brief health questionnaire.

For more details please call Matthew on **07837 776845**, email: [matthew.doherty@live.co.uk](mailto:matthew.doherty@live.co.uk). Our facebook page is: [www.facebook.com/WalkingFootballAylesbury](http://www.facebook.com/WalkingFootballAylesbury) and more information can be found at: [www.walkingfootballunited.co.uk](http://www.walkingfootballunited.co.uk)







## Young Volunteers bring Christmas Cheer!

For the 40th year in a row, Aylesbury Youth Action young volunteers will be taking older people out for their Christmas Shopping in Aylesbury. This is an opportunity for older people who are housebound and isolated to spend time in the company of friendly teenagers, see the Christmas lights, and do some shopping.

For many of our older shoppers it is the only time they get into town and meet up with friends old and new. The date of this year's Christmas Shop is Thursday 10th December, 4.00pm - 6.00pm in Aylesbury town.

Transport from home is provided free of charge to our shoppers, with free wheelchairs available from Shopmobility, who kindly stay open late especially for us. After shopping, there are refreshments and a free raffle, before taking everyone home again.

If you yourself, or an older person you know, would benefit from joining us on this shopping trip, please contact Melinda at the Aylesbury Youth Action office on **01296 421149**.

If you would like to sponsor the project, and help us take even more older people out shopping this year, you can make a donation by sending a cheque to Aylesbury Youth Action, with Christmas Shop clearly written on the reverse, and posting it to AYA, Queens Park Arts Centre, Queens Park, Aylesbury, HP21 7RT.



## Buckinghamshire (The Rifles) Army Cadet Force

During the first weekend of October, cadets from E Company undertook a training and testing weekend at the county training centre, Read House in Bicester.

Weekend training is an opportunity to maximise the time available for cadet development and improvement, and allows access to resources and facilities that would not ordinarily be available on a parade night.

An exciting package was put together to encompass all levels of cadet training, from those who had just joined the organisation through to the seniors. During the course of the weekend cadets participated in a variety of activities ranging from skill at arms training, shooting, fieldcraft, first aid and navigation. Testing was also carried out and cadets performed to a high level.

In addition, a presentation on the Police Force was given by a member of our staff who is also a Special Constable, in order to give the cadets an insight into the organisation and the role that they play within the community.

The cadets worked incredibly hard, but there was a chance for them to relax and unwind on Saturday evening with a disco.

On Sunday's final parade, a number of cadets received promotion, followed by happy but tired cadets in the minibuses back to Aylesbury and home locations.

E Company consists of 3 (Missenden), 4 (Aylesbury), 6 (Chesham), 7 (Hawklade), and 21 (Princes Risborough) Platoons. The age range of cadets is from 12 to 18 and includes both girls and boys.

For more information see: [www.bucksacf.com](http://www.bucksacf.com) or email: [caobucks-se@rfca.org.uk](mailto:caobucks-se@rfca.org.uk)



# FESTIVE FAMILY FUN

FREE

SUNDAY 13<sup>TH</sup> DECEMBER 11AM - 4PM  
FRIARS SQUARE AND MARKET SQUARE, AYLESBURY

A GIANT SNOWGLOBE  
for fun and photographs

Magic by Sylar  
Hot roast chestnuts

Stilt walking

Traditional FAIRGROUND RIDES

Live Music  
Lots of Games and Activities

BALLOON MODELLING  
Barrel organ

crafts For All Ages  
With Bucks county Museum and Queens Park Arts Centre

Juggling CIRCUS AND Entertainment

Towersey Morris Dancers performing Mummings Play

FACE PAINTING



DONT FORGET  
Carolfest  
FREE event  
Sunday 13<sup>th</sup> December  
6pm - 7pm,  
St Mary's Church,  
Aylesbury



www.aylesburytowncouncil.gov.uk  
T: 01296 425 678

