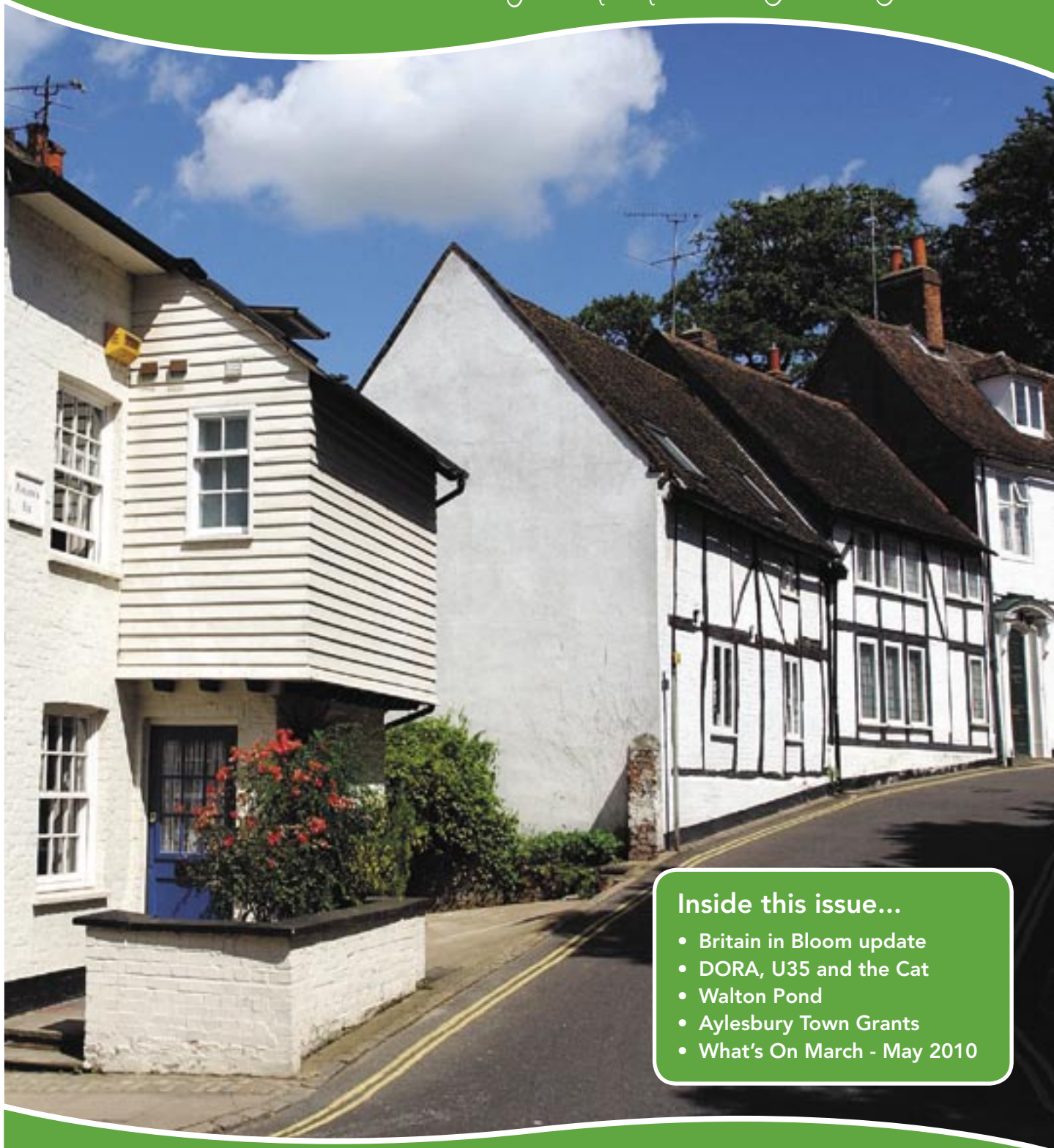


Aylesbury Town matters

Aylesbury Town Council Magazine
Issue Sixteen March 2010



Serving the people of Aylesbury



Inside this issue...

- Britain in Bloom update
- DORA, U35 and the Cat
- Walton Pond
- Aylesbury Town Grants
- What's On March - May 2010



'Take pride in Aylesbury Town'
www.aylesburytowncouncil.gov.uk



Welcome Note

Welcome to the 16th issue of Aylesbury Town Matters.

After a bitter winter it is good to see the days getting longer and to know that spring is on the way. As ever, this means we are getting ready to organise the floral displays that make Aylesbury so attractive each year. In this edition we have articles on Britain in Bloom and Aylesbury in Bloom, and we are inviting you to take part by allowing us to include you in our competition.

There are lots of news items on community activities and initiatives. We also look back to public events enjoyed by Aylesburians in the autumn and over Christmas, and forward to entertainments in Kingsbury and the Market Square throughout the coming months. 'What's On' is packed with places to go, showing just what a buzzing, lively town Aylesbury is.

We have an article on the role of Aylesbury Prison during the war, an update on Walton Pond and an interview with the new Town Clerk.

Every so often we seek the views of young Aylesburians and in this issue we have three short articles from sixth-formers at Aylesbury Grammar School. So read on, enjoy, and as ever, let us know what you think!

Cllr Steve Patrick
Leader of the Council



Cllr Mrs Ranjula Takodra at First Summer Fete, Hampden Hall Care Centre, Weston Turville

An MBE for the Mayor of Aylesbury

Enthusiastic good wishes were showered on Cllr Mrs Ranjula Takodra, the current Mayor of Aylesbury, on her award in the New Year Honours list. Ranjula was given an MBE for 'Services to the Community'.

Contents:

	Page
Welcome Note	2
An MBE for the Mayor	2
Britain in Bloom update	3
True Grit – or Beating the Blizzards	3
Past Events	4
Aylesbury in Bloom	5
DORA, U35 and the Cat	6 - 7
Local News	8 - 9
Community News	10
Aylesbury War Memorial	11
Contacting your Councillor	12 - 13
Walton Pond	14
Aylesbury Welcomes a New Town Clerk	15
Keeping Aylesbury Safe	16
Aylesbury High School asks 'Would you like to Sing?'	16
Defensive Planting	17
Recipe for Simnel Cake	17
A Youths-Eye View	18
Love Food, Hate Waste	19
Aylesbury Town Grants	20
Mayoral Engagements	21
Music at lunchtime at St Mary's	21
What's On March to May 2010	22
St George's Day and Aylesbury's Green Fair	Back page

Contact Details:

Aylesbury Town Council
Town Hall, 5 Church Street, Aylesbury,
Buckinghamshire HP20 2QP
Tel: 01296 425678 Fax: 01296 426134
E: info@aylesburytowncouncil.gov.uk
www.aylesburytowncouncil.gov.uk

Opening hours:
Monday - Thursday 8.45 am - 5.15 pm
Friday 8.45 am - 4.45 pm

*Front cover image: St Osyth's
Photograph courtesy of AVDC.*

Aylesbury Town Council is a member of English Historic Towns Forum and twinned with Bourg-en-Bresse.



Mixed Sources

Product group from well-managed forests, and other controlled sources
www.fsc.org Cert no. TT-COC-002702
© 1996 Forest Stewardship Council

Britain in Bloom update

Once again, the Town Council is gearing up for Britain in Bloom 2010. In co-operation with the County and District Councils, we shall be sprucing up the Town, putting out hanging baskets and planting flower beds and tubs. We hope to continue to build on our year-on-year success in this initiative and achieve the best showing yet.

This competition, however, is not just about flowers. It relates to every aspect of our relationship with our environment and covers wildlife and biodiversity; care of the natural environment; care of our built environment; recycling; reduction of our carbon footprint; rubbish removal and processing and much more.

If you have a project related to any of these themes, we'd love to hear from you. We can help with materials, tools, expertise and some man-power. For example, if you have an idea for turning a bit of waste ground into a pleasant little garden, with perhaps a bench and some flowering tubs or shrubs, please contact us. We have helped a number of schools create vegetable or wildlife gardens and would welcome further approaches from teachers or parents to enable us to continue this work.

We would also like to hear from Gardening Societies and Allotment Associations about their efforts this year. Additionally we are looking for attractive residents' gardens to feature in our summer exhibition, so if you have something you are proud of, please share it with us.

Margaret Wagstaffe



Photo by Margaret Wagstaffe

True Grit - or Beating the Blizzards

The great winter freeze is now just a bad memory. Aylesbury suffered, as did everywhere, but not as much as surrounding towns and villages, thanks to the valiant efforts of these lads.

From late December to mid-January, Town Council operatives manfully shovelled snow and spread salt and grit in the centre of Aylesbury. Between them they managed to keep most of the centre of Aylesbury more or less walkable, with care. However, successive falls of snow, followed by freezing spells, meant that for every two steps they took forward, the weather drove them one step back. Determined not to be beaten, on one occasion Paul, Alan and Chris volunteered to work all night to make the Town Centre safer.



The Council's Outdoor Maintenance Team
Photo by Keith Turner

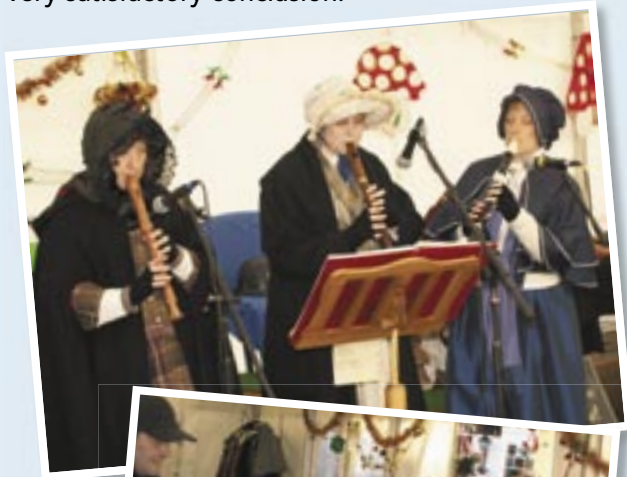
The Town Council worked closely with the County Council to tackle the most dangerous patches of ice and snow, and the District Council also sent out their contractors to clear what they could. Our collective efforts did not by any means eradicate the problems underfoot, but overall, Aylesbury fared a lot better than many other town centres.

Margaret Wagstaffe

Past Events

Ghoul & Villains

Aylesbury folk gathered enthusiastically for the perennially popular 'Ghoul and Villains' evening at Halloween. A team of actors led the crowd from one scene of grisly history to another, to the shivering delight of the audience. The tour culminated at the King's Head with spirits – both the disembodied and the liquid kind – bringing the evening to a very satisfactory conclusion.



Carolfest

As usual, hundreds of Aylesburians turned out, despite the bitter cold, to join in with the children, choirs and orchestra taking part in the annual Carolfest. A medley of carols, old and new, formed the programme. The audience was especially charmed by the schoolchildren in their 'Father Christmas' hats and sparkling tinsel. Mulled wine, soup, mince pies and roasted chestnuts provided by the King's Head and the Rotary Club helped to keep out the cold.



All photos courtesy of Ray Ghent

Margaret Wagstaffe and Claire Bignell

Aylesbury in Bloom



Mrs. Johnson's garden, Southcourt

We shall be holding our annual Aylesbury in Bloom competition as usual, and are hoping to receive entries from a range of groups and individuals. Amongst others, we would like to hear from owners or managers of commercial and retail premises, pubs, restaurants and hotels, allotment holders and residents with attractive front or back gardens.

Your entry doesn't need to be a manicured plot, although beautiful gardens are very welcome. We love to find examples of innovate designs and planting, and creative uses of recycled materials. Some residents are now using their gardens to produce fruit and vegetables and we would love to find examples of these. Herb gardens can be delightful whether the produce is for culinary or medicinal purposes. Whatever your interest, please tell us about it and enter the competition.

Keith Turner



Aylesbury Town Council

Aylesbury in Bloom Entry Form

(Exclusively open to all residents of the Parish of Aylesbury Town)

Closing date for entries: Sunday 23rd May 2010

Aylesbury Town Council
5 Church Street
Aylesbury
HP20 2QP

Telephone: 01296 425678
Fax: 01296 426134
E-mail: d.trichardt@aylesburytowncouncil.gov.uk

I wish to enter the following (please tick the appropriate box):

- | | | |
|---|---------------|--------------|
| <input type="checkbox"/> Best Neighbourhood Improvement | Judging date: | Sat 5th June |
| <input type="checkbox"/> Best Communal Housing Garden | Judging date: | Mon 7th June |
| <input type="checkbox"/> Best Front Garden | Judging date: | Sat 5th June |
| <input type="checkbox"/> Best Window Box/Hanging Basket | Judging date: | Sat 5th June |
| <input type="checkbox"/> Best Nature Garden | Judging date: | Sat 5th June |
| <input type="checkbox"/> Best Vegetable Garden | Judging date: | Sat 5th June |
| <input type="checkbox"/> Best Environmentally Friendly Garden | Judging date: | Sat 5th June |
| <input type="checkbox"/> Best Back/formal Garden | Judging date: | Sat 5th June |

Name:

Address:

Telephone (day):

Telephone (evening / mobile):

Ready access available to your garden? Yes No

If not please advise what special arrangements are needed

I agree to the Terms and Conditions Copy can be obtained by calling 01296 425 678

Signature: Date:

DORA, U35 and the Cat

A story of spies and Aylesbury Prison

DORA, in this case being the 1914 Defence of the Realm Act, had a number of interesting provisions. It was illegal to fly a kite or light bonfires lest they attract Zeppelins. You could not feed bread to wild animals as food was rationed. Similarly beer was watered down and licensing hours introduced in order to keep munitions workers sober and out of the public houses. The buying of 'rounds' was illegal.

Along with DORA an Aliens Act ensured that a large number of foreign women were interned in Aylesbury prison. Amongst these were several who had been convicted of espionage. Attitudes towards these women ranged from fearing their innate boldness to despising them as gullible dupes.

One George T Breeckow was the son of a piano tuner who graduated from Germany's spy school in Antwerp, and then travelled to England on forged papers under the assumed name of Reginald Rowland. He was with a Mrs Lizzie Wertheim. Breeckow quickly came to the attention of the authorities as he made frequent visits to the Navel Base at Rosyth in Scotland. His letters to Holland were found to contain hidden messages in invisible ink. He was arrested, tried under the Treason Act, and sentenced to death. Lizzie, his partner in crime, was given a ten year prison sentence. Breeckow asked for the blindfold used at his execution to be a handkerchief from Lizzie Wertheim. One observer at his execution in the Tower of London stated that the 31 year old spy had a heart attack just before the firing squad took aim. His friend Lizzie died in Aylesbury prison in 1921 of natural causes.

A number of foreign women found themselves interned because of hostilities under the provisions of DORA; many on mere suspicion of wrongdoing. But a number of British women were also, courtesy of DORA, put behind bars for the duration. One woman was confined to a nunnery. Another, the wife of a curate, was imprisoned for expressing German sympathies. She did not help her own case by saying she would have passed information to Germany if she knew how.

By June 1917 the governor of Aylesbury, S. F. Fox, was thoroughly fed up with his inmates. He complained that the grounds of the prison were at the disposal of the interned women from 6.30am – 9.15pm, and these women petitioned for more rights every day.



Aylesbury Gaol 1944

Image courtesy of Centre for Buckinghamshire Studies

More disturbing still, he stated, were "notes... found under cabbage leaves, and signs." He was irate because "dumb language [was used] which [was] not understood by the Officers."

One such internee, Lina Heine, was particularly troublesome. She quickly confessed her guilt after internment, but claimed that her husband was innocent of spying. This failed to impress the authorities and he died in prison. She later waged a one-woman campaign of petitions and letter writing, protesting about conditions in the prison. She was so persistent that the American Ambassador, on behalf of Austria-Hungary, began to make investigations into her claims of inhuman treatment, much to the embarrassment of the Home Secretary.

The designation U35 referred, not to a U boat, but to Jona Von Ustinov, better known as Klop, a romantic figure who also had links with Aylesbury prison. His nickname translates from the Russian word for 'bedbug'. The son of Baron Von Ustinov, he won the Iron Cross in WW1 as a fighter pilot. He joined the German Embassy in London as a journalist but quickly fell foul of the Nazi regime that emerged in 1933. Klop and his family became naturalised British citizens soon afterwards. His son Peter (Ustinov) went to Westminster School, and would later become one of the actors who trod the boards at Aylesbury Repertory Company (see previous Town Matters).

Klop was pivotal in highlighting the growing threat posed by Hitler. Once the war began he appears to

have worked with the 'double cross operation', by which newly captured German spies were quickly turned, to become British agents. One illustration of his technique involved a spy by the name of Vera.

Vera landed in Kent in 1940 and was captured soon afterwards, along with seven male counterparts. All but one of these were shot as enemy spies. Vera, having been incarcerated in Aylesbury prison, found herself whisked out at weekends, to be wined and dined by Klop; only to be returned to her cell on Monday morning. Although enamoured by his charm, she nevertheless declined his invitation to become a double agent. A 'thank you' letter from Vera to Klop still exists in public records, as evidence of her liking for him.

Another internee of Aylesbury prison during the Second World War was Mathilde Carré, nicknamed 'The Cat'. This woman changed sides as often as she changed her lipstick. Carré had been second-in-command in the French Resistance organisation Interallié, where she helped provide the Allies with a virtually complete account of the German military in France, winning the confidence of Gestapo officers with her jet black hair, voluptuous figure and long shapely legs.

Interallié was exposed by German agents in November 1941 and Mathilde Carré, after being given a meal in one of Paris's best restaurants; offered a hotel suite, and promised a 60,000 franc monthly salary, began working for the Nazis. She betrayed former comrades, became the lover of the German agent who had turned her, and continued to send messages to London as if Interallié was still functioning. Carré, then 34, travelled to England in February 1942. She was under instruction to infiltrate and expose the workings of the Special Operations Executive (SOE). After arriving in London she admitted to working for the Germans, but agreed to change sides again and help the Allies by sending false information about SOE's activities to her Nazi contacts in France. MI5 and SOE were deeply suspicious, however, and were alarmed when Carré, (whom they codenamed Victoire), charmed Lord Selbourne, who had just taken over as head of SOE. Carré was determined to become his mistress, and Selbourne appeared ensnared: asking her to dinner, promising to commend her to Winston Churchill, and assuring her – the stereotypical Parisienne with a taste for luxury – that she would have everything she needed in London.

MI5 documents since declassified reveal serious concern that Selbourne was embarking on an affair with an 'extremely dangerous' woman who had the potential to betray Britain's entire overseas spy

network to the Germans. His ardour caused deep consternation among Britain's other spymasters, who feared he was about to 'make a fool of himself' with one of the most dangerous women of the war.

Selbourne's dalliance, however, did not appear to result in the loss of any secrets. A Captain Harmer recorded in a later summary that "observation was kept on Victoire throughout her stay and it is thought impossible that there was any leakage to the Germans." It appears that Selbourne was warned off this femme-fatale; Carré was arrested on espionage charges and imprisoned in Aylesbury. In 1945 she was repatriated to France where she had two sentences of death for collaboration and treason, but these were commuted by the President of the Republic. She was released from prison in 1954 and disappeared from public view. Selbourne, much chastened, conducted himself with total decorum for the rest of the war.

Kevin Peters



A game of bridge is just the trick!

Aylesbury Aces is a small, newly formed bridge club dedicated to making this absorbing pastime accessible to all. The club is proud of its friendly and welcoming atmosphere. Intermediate level is played, and a host system guarantees to find a partner for single players. Founder member, Gill Pain, says: "We wanted to offer our members a social atmosphere and so far we have run bridge and quiz supper evenings, afternoon teas and charity events."

Murray Cooke the current club Chairman adds, "Whilst our members have a wide range of abilities and experience, we all enjoy playing together, some looking for a good game of friendly bridge, others to progress to taking part in local matches. We have been active for less than a year, yet the overall standard of play has improved in that time."

For more information please contact Gill on 07725 338 967 or see www.bridgewebs.com/aylesburyaces/home.html

Local News

Great Goods, Competitive Costs!

Moving to a new house or flat? Working on a really tight budget? Fancy re-vamping your living room, or giving your bedroom a makeover? Need good quality items with excellent value for money? Believe in recycling?

Try...

The Furniture Warehouse, Unit 4,
Aylesbury Business Centre, Chamberlain Road,
Aylesbury, Bucks. HP19 8DY Tel: **01296 393963**
Email: ahsfurnit@yahoo.co.uk
Contact name: Ray Keating (Manager)



Aylesbury's New World Record Holder

*Cllr Mrs Ranjula Takodra
with Sam. Photo by
Maurice Cousins.*

We have kept you updated with Sam Ridgway's sporting progress in previous editions as we identified early on that this local young man was incredibly committed to his training and sporting future. We are delighted to bring you the latest news on Sam's progress: **HE HAS ACHIEVED A WORLD RECORD!**

In November 2009, 17 year-old Sam travelled to Northwood Stadium in Stoke-on-Trent for the Hammer Pentathlon event. The day was fairly miserable, overcast and raining, but despite the weather he managed a personal best and a world record. Altogether he threw a combined weight of 25.26 kilograms over 5 throws achieving a total distance of 278.47 metres.

Aylesbury Town Mayor, Cllr Mrs Ranjula Takodra was pleased to have the opportunity to personally congratulate Sam on his achievement and dedication to his training. She said, "We are delighted to have such a committed, potential Commonwealth and Olympic athlete in our community and are behind Sam all the way."

Rayners Hedge Neuro-rehabilitation Unit

Cllr Mark Willis has had a petition running on the Number 10 Downing Street website. The Rayners Hedge Neuro-rehabilitation Unit in Aylesbury faces closure and the removal of facilities to Amersham. We need to retain this unit in Aylesbury, even if it is not on its current site. Although the online petition has now finished you can still write to Aylesbury's MP David Lidington to ask for his support. Please write to:

David Lidington
Conservative Office
100 Walton Street
Aylesbury
Bucks. HP21 7QP

Telephone: 01296 482102

Marie Curie Appeal

Marie Curie Cancer Care provides support and care for cancer patients. They will be fundraising in March and are asking for volunteers to help for a few hours now and again.

People are needed for street collections, for co-ordination work and for driving and equipment delivery roles.

If you feel you would like to help, please contact Victoria Martin on 01869 325209.

Space to Hire

Need a space for a meeting, a show, an exercise class, a summer school class or even a wedding reception? **Sir Henry Floyd Grammar School, Aylesbury**, has a space to hire to suit a variety of events. Classrooms, Gym, Theatre Hall, Dance Studios, Playing Field and many more! Competitive prices, a central location, easy parking and a friendly service at your local school.

Call Angela Ksiazek on **01296 744350**, email: aksiazek@bucksghf.org.uk or write to SHFGS, Oxford Road, Aylesbury, Bucks. HP21 8PE

Services for
Children and Young People
in Buckinghamshire




You might be just the person we're looking for...

Are you interested in **Fostering, Adoption** or **looking after a child with Disabilities?**

Please contact us on
01296 382 555
www.buckscc.gov.uk/fostering



Services for
Children and Young People
in Buckinghamshire



Your Community, Your Future

Have you ever thought about becoming a School Governor?

School governors are people like **you**, willing volunteers who want to give something back to their community and help children to have the best possible education. Governors come from all walks of life and are welcomed from all parts of the community.

No formal qualifications are required: you just need to have time, enthusiasm, and a commitment to making a better future for our children. If this sounds like **you**, then please visit the Governor Support Team for more information on 01296 383180, email: govsupp@buckscc.gov.uk or visit us online at www.buckscc.gov.uk/governorrecruitment



Get Active – Leisure Opportunities for Adults with Learning Disabilities

The Get Active project is a partnership project, hosted by Buckinghamshire and Milton Keynes Sports Partnership and funded by the Big Lottery Fund.

The project aims to increase and improve sporting opportunities for adults with learning disabilities in Buckinghamshire. Get Active runs a number of activities in the Aylesbury area for people over the age of 16 who have a learning disability and we're always keen to encourage more people to come along and join us.

Sessions that are currently running in the Aylesbury area are:

Football at Stoke Mandeville Stadium, Wednesdays 10.00 – 11.00am. All abilities very welcome for this fun and friendly session.

Multi-sports at Stoke Mandeville Stadium, Tuesdays 7.00 – 8.00pm. All abilities welcome. At this session participants will get the chance to try different sports each week.

We are also always looking for fun, friendly and enthusiastic volunteers to help us run these sessions – you don't need to have any special skills or qualifications we will provide any necessary training.

If you would like more information on the sessions in Aylesbury or other areas of Buckinghamshire or about becoming a volunteer with the project please contact **Polly Owens, Disability Sports Coordinator,**

Bucks Sport, 01296 585884,
email: powens@buckssport.org

Sports Grants

Aylesbury Town Council Grants Committee is pleased to announce that from April 2010 we will be able to help support sports men and women aged up to 18 (in extraordinary cases 21). With the cost of pursuing their sport, you will need to be achieving exceptional results in the chosen discipline, and must be based in Aylesbury Town. For more information please see our website at: www.aylesburytowncouncil.gov.uk or contact Mrs Pat Phillips directly on 01296 425678 or p.phillips@aylesburytowncouncil.gov.uk

Community News

Crimestoppers helps you fight crime

Since Crimestoppers was set up in the Thames Valley in 1999, 16,000 callers have given valuable intelligence anonymously and as a result more than 1,800 people have been arrested and charged. Their offences ranged from murder, arson and serious assault to drink driving, theft and vandalism.



The largest number of calls is about drug dealing which still remains a major problem. Nationally, an average of 19 arrests are made each day and one person every four days is charged with murder – all as a direct result of anonymous calls to Crimestoppers.

Aylesbury Vale Rape Crisis (AVRC)

The service is offered to women who have experienced rape, sexual assault or child sexual abuse; those who have been abused recently or in the past; those who have experienced domestic abuse; mothers of abused children, partners and anyone supporting a woman affected by violence. AVRC provides counselling, advocacy, a helpline, email support, phone support and befriending. Help is available for organisations requiring information, talks and training.

The organisation aims to reduce the level of feelings of degradation felt by those who have experienced all forms of abuse, and to help them to regain control of their lives. AVRC also exists to raise the general understanding of rape, sexual assault and child sexual abuse through education and research.

If you know anyone who needs help, please ask them to contact:

Aylesbury Vale
Rape Crisis
PO Box 268
Aylesbury
Bucks. HP22 6SA
Tel: 01296 392468
www.avrc.org.uk
Email: mail@avrc.org.uk



About 'WHEELS to WORK'

Wheels to Work is a moped loan scheme for young people (aged 16-19, or up to 25 in some circumstances) who find it difficult to access work or training opportunities because of a lack of transport.

Eligible candidates will receive a 50cc moped for a period of up to 9 months.

All that we ask in return is that you pay a small monthly wear and tear fee, pay for your own fuel, wear the provided safety equipment and bring your moped in for monthly safety checks.



What the scheme includes:

- A fully taxed, insured and safety checked moped
- Helmets and safety clothing
- Insurance, tax and breakdown cover
- Road safety training
- Compulsory Bike Training (this must be passed before the moped is released)

For an application form, or more details, please contact Sally on 01296 421036.

Aylesbury War Memorial

Every autumn we gather in the Market Square to honour Aylesbury's War Dead. Our Memorial is of a design that can be found and instantly recognised throughout the British Commonwealth.

The erection of a war memorial for the town was first mooted by Aylesbury Town Council at their meeting on May 4th 1919. Mayor Alderman Bartlett informed the Council that several public authorities were re-naming some of their thoroughfares and bestowing upon them a name recording a place or event in connection with the war. Then, at a meeting on the 9th February 1920 the Town Clerk read a letter from the War Memorial Advisory Committee, proposing that the Council consent to a Memorial being erected in Kingsbury Square in the form of a cenotaph. The cautious Council referred the matter for further consideration.

On the 8th March 1920 The Mayor reported that the War Memorial Committee were desirous of placing the Memorial at the crossroads opposite the Royal Bucks Hospital. On the 13th September 1920 the Town Clerk read another letter from Mr T Field, Secretary of the War Memorial Committee, stating that the Commission now wanted to erect the Memorial at the North East end of the Market Square. On the 24th September it was proposed by Alderman Adkins, and seconded by Alderman Buckingham, "That the War Memorial be placed in the position shown by the Borough Surveyor at the top of the Market Square". This proposal was agreed and during the following 6 months plans were drawn up. On the 30th May 1921 the Borough Council resolved that the plans as amended be approved.

The Commonwealth War Graves Commission memorials found in many cemeteries are called 'The Cross of Sacrifice'. They were designed by Sir Reginald Blomfield (1856-1942). Sir Reginald was a prolific architect of the later Victorian and the Edwardian periods. His principal business was the construction of new and renovation of existing country houses. Notable amongst these are the alterations to Chequers in Bucks (1902-1912).

In his 70s, at the behest of the Commonwealth War Graves Commission, Sir Reginald designed the 'Cross of Sacrifice', or 'War Cross', that we know so well today. The Cross, with its simplicity and pure white marble construction, met a need to make public homage to those who had given their lives for freedom. It was rapidly adopted as the standard, not just in the



*The Memorial in Market Square
Photo courtesy of Maurice Cousins*

Commonwealth, but also in many other countries. Sir Reginald also created monuments at Brandhoek Cemetery War Memorial, West Flanders, Belgium, (1915); The Belgium War Memorial, Embankment, London, (1917); Hertfordshire Regiment Memorial, Hertford, (1921); and The Royal Air Force Memorial, London, (1923).

Local builders Webster & Cannon undertook the erection of the memorial. The Cross rises from the centre of a low wall, with name panel surrounds; a sword on the front face, and lamp bases ornamented with acanthus and laurel. At a ceremony on the 15th September 1921 the Memorial was unveiled by the Lord Lieutenant of Buckingham.

The Memorial was adopted by the Council in September of that year and a vote of thanks was given to Mr T Field for his valuable services. In reply Mr Field suggested that under the supervision of the Council, local Girl Guides and Boy Scouts attend to the Memorial to ensure the vessels, floral decorations and memorial plaques be kept clean and the inscriptions legible.

In Aylesbury, one way in which we continue to honour our dead today is to encourage local primary school children to produce gardens in pots, which are displayed at the Memorial during the summer.

David Cooper
Cemetery Manager

Ward: Gatehouse



Cllr Kevin Peters
07989 892896



Cllr Mrs Pat Jamieson
01296 428275



Cllr Tuffail Hussain
07886 295946

Ward: Quarrendon



Cllr Ray Ghent
01296 489327



Cllr Miss Noreen O'Sullivan
07796 804676

Ward: Oxford Road



Cllr Zulifqar Ahmed
07731 328011



Cllr Mike Smith
01296 421732

Ward: Southcourt



Cllr Mrs Freda Roberts MBE JP
01296 424452



Cllr David Ralph
01296 581975

Ward: Walton Court



Cllr Mrs Ranjula Takodra
07958 423083



Cllr Roger Surguy
01296 425678



Ward: Central



Cllr Steven Mitchell
01296 392096



Cllr Mrs Jenny Puddefoot
01296 612461

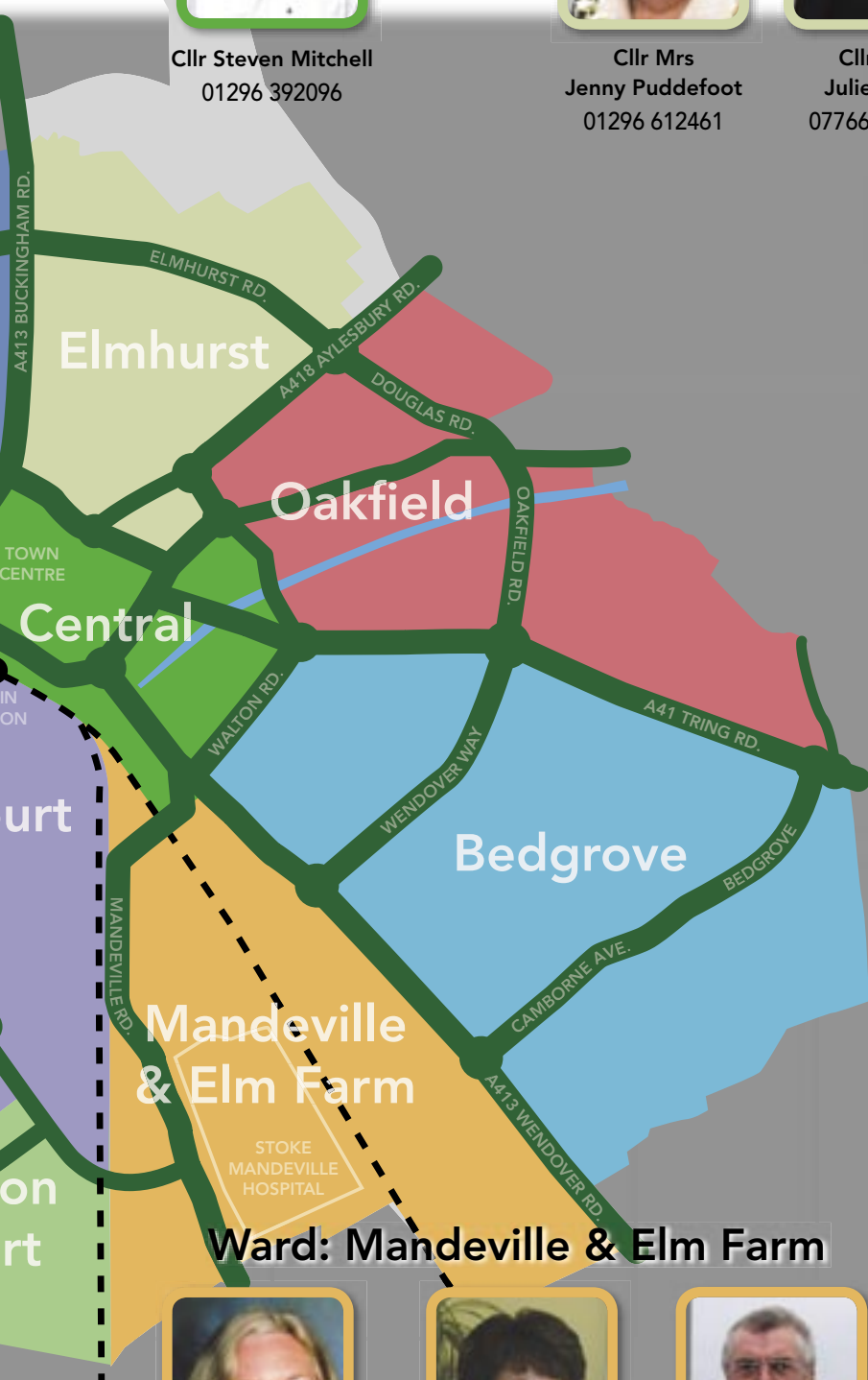


Cllr Mrs Julie Ward
07766 545236



Cllr Mohammed Amjad
07956 803458

Ward: Elmhurst



Ward: Oakfield

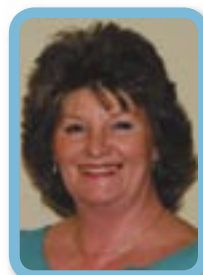


Cllr Graham Webster
01296 483416



Cllr Steve Patrick
01296 424986

Ward: Bedgrove



Cllr Mrs Jenny Bloom
07729 011501

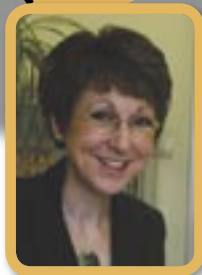


Cllr Alan Sherwell
01296 420672

Ward: Mandeville & Elm Farm



Cllr Mrs Denise Summers
01296 336731



Cllr Mrs Sue Chapple
01296 426814



Cllr Brian Roberts
01296 422881



Cllr Mrs Penni Thorne
01296 422232



Cllr Mark Willis
01296 586109

Walton Pond



Residents may have noticed the work the Town Council has undertaken during this last winter on Walton Pond.

The pond was for many years an area of total neglect, by virtue of its status as an orphan. Nobody owned it. This was because, during the period of enclosures, it seems to have been just simply forgotten. No-one claimed ownership and so it became a liquid no-man's-land. The banks were enclosed, and became part of landholdings which eventually were taken into the custodianship of the County and District Councils, but the area covered by water, not falling under anyone's jurisdiction, endured a period of total neglect.

Councils are not permitted to take action in any matter unless there is a statutory basis for what they do. Various solicitors were employed by the Town Council to find a way of legally maintaining the pond, as an important Town asset, but all confessed themselves stumped. It was the Council's new Town Clerk, Keith Turner, who cut the Gordian knot. He researched local government legislation exhaustively, and eventually tracked down a little-known piece of public health legislation which enabled a town or parish council to take responsibility for any stretch of open water which fell within its boundaries.

Once the legal hurdle had been overcome, Keith contacted a pond expert to establish the best way of bringing the pond back to good condition. Following the plan devised by the consultant, the Council has now cleaned the pond thoroughly, removing 'donkey's years' of silt from the bottom, assorted dumped detritus, unwanted vegetation and much pollution.

The biggest problem is that the pond, not being a part of a naturally flowing stream system, is mainly fed with run-off from the road. This was fine when it was part of the village green with only horse-drawn farming carts passing by. These days, however, it borders a busy urban thoroughfare and the fallout

from petrol and diesel fumes leaves toxins on the surface of the road. These poisonous substances leach into the water and are harmful to wildlife.

The solution has been first to clean out the area completely, and then, following the natural path the water takes, to construct a series of settlement 'tanks', from wood. The water will slowly flow through these mini-reservoirs, allowing pollutants to settle out, so that when it melds into the main body of water it will be reasonably clean. This will provide a much more supportive habitat for wildlife and will also enhance the appearance of the pond.

At the same time as the Council was planning the regeneration of the pond, the developer of the new dwellings on the site, 'Housing Solutions Group', wanted to upgrade the area between the water and its new buildings. Working with the Town Council, a plan was drawn up to lay new paths and landscape the banks. All historic features, such as the cobblestones, the old pump and the railings, will be preserved and renovated, and the improvements and new features should bring this very special part of our history to prime condition and create a little gem for our townspeople to enjoy.

Margaret Wagstaffe



Photos courtesy of Maurice Cousins

Aylesbury Welcomes a New Town Clerk



After serving the Town for five years, former Town Clerk Margaret Wagstaffe retired on 31 December 2009 and the post was taken up by Keith Turner. Keith is well known to many residents as he represented Aylesbury Central Ward on the District Council for about seven years. "I think residents must

have been satisfied with my efforts on their behalf..." said Keith, "...as they re-elected me after I had completed my first term in office."

Did the fact that Keith had been a District Councillor help him to secure his appointment?

"Well, yes and no", said Keith. "The fact that I knew Aylesbury intimately and was fully aware of all its issues was an advantage, but then, comprehensive local knowledge would have been an advantage to any applicant for any position of this kind." However, he went on to say "It didn't help in any other way. My political background was, if anything, a hurdle to be overcome."

The post was advertised nationally. Applications were received from all over the country, and two even came from abroad. An all-party selection panel chose the candidates for interview. A cross-party panel was appointed to conduct the interviews. Unfortunately, the original panel had to be modified as one member who had initially agreed to take part later withdrew, forcing a substitute to be found. At interview, criteria for selection were all marked in exactly the same way for each candidate. The job went to the highest-scoring applicant.

Did Keith's former employment by the Council stand him in good stead?

"Again, yes and no", said Keith. "I had done the Town Clerk's job for most of 2008, whilst Margaret was absent through prolonged illness, so I had demonstrated my competence. On the other hand, members knew me well enough to have a very clear idea about my abilities, and if they had not thought I was up to the job, this would have been the ideal opportunity to appoint someone else."

Did Keith have any reservations about resigning as a District Councillor?

"Well, obviously, I was loathe to step down, as I got on well with my constituents. I have always worked hard for them and believed I was doing a good job. Resigning wasn't strictly necessary, as I understand there is at least one other serving District Councillor in Aylesbury Vale who is also a Parish Clerk. But in the interests of transparency, and to avoid any accusations of bias, I felt it was the appropriate course of action."

Can Keith now be politically impartial, with his history?

"Yes, of course, I can, when I'm doing my job. Most people have political beliefs, whatever their work. Officers employed by every council in the land vote one way or another at election time. That doesn't affect how they carry out their duties. If you take on a post such as this, you leave your politics very firmly at the office door. I am employed to serve the people of Aylesbury and the Town Council in whatever way they dictate, and that is what I intend to do to the very best of my ability."

Although looking forward to retirement, Margaret will still work for the Council on an occasional basis, to help with production of the Town magazine and other publications.



Margaret Wagstaffe receiving a bouquet of flowers from Aylesbury Town Council staff and friends. Photo courtesy of Maurice Cousins.

Keeping Aylesbury Safe

During December 2009, Police in Aylesbury carried out Operation Attali, which is aimed at tackling and disrupting known offenders. The operation concentrated on burglary, theft and drug offences, mainly in the Town Centre. 18 people were arrested, seven of whom are known burglary, vehicle crime and robbery offenders. Charges have also been brought against several people for drug possession and theft, and there are ongoing investigations for offences of possession of drugs with intent to supply. During the operation, four search warrants were executed, 70 people were stopped and searched, and a number of people were subsequently arrested for drug offences. Attali will continue over the next couple of months to tackle and disrupt known offenders and reduce the number of offences carried out in the Vale.

With serious burglaries and muggings down in December compared to November, before the operation started, Attali has been a great success. Overall serious acquisitive crime is down 14% with 18 less crimes. The number of burglaries has dropped by 18%, eleven less than the previous month. Robberies have fallen by 66%, with only two offences for the whole month and theft from vehicles is down by 6.7%, three less than November. Neighbourhood Inspector, Omar Abu-Rish, said: "This sends a warning to criminals who are thinking of committing crime in Aylesbury Vale. They will be caught and will have to face the consequences of their actions."

Aylesbury High School asks 'Would you like to Sing?'

Aylesbury High School is planning to celebrate its 50th anniversary with a Garden Party in the grounds of the school on 8 May 2010. It will be an old-fashioned fête, with old-fashioned stalls but with a few surprises thrown in for good measure.



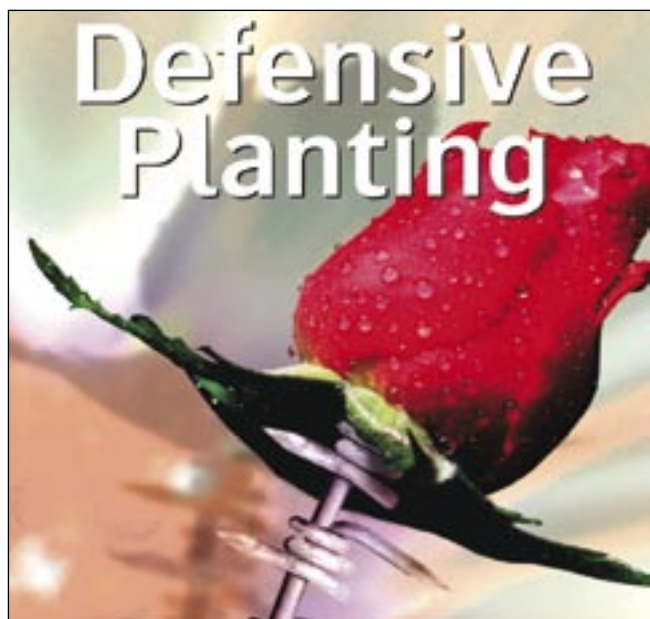
One of those is inspired by a recent BBC TV programme – The Choir. To make the Garden Party really feel like a community event, the local girls' school wants to get local women and girls together to form an all-female choir who will sing at the Garden Party.

The school would be delighted to hear from any of our readers; it doesn't matter if you are a novice or have sung in choirs before! You will be joining with people who just love the idea of singing and being part of something different.

So, like the programme, they are looking for ANYONE in the community who likes the idea of joining in. All you need to do is to commit for a few rehearsals on Saturdays before May and be free on May 8 itself.

The idea came from current 6th form student Katrina Faranda Bellofiglio who says "I was inspired by the TV programme, and would love to bring all sorts of people in Aylesbury together who just love to sing – however well or badly they think they may do it! It's not going to be highbrow – we will be singing two hits: a Cliff Richard song from 1959 when the school opened and a hit from 2009 to be announced – choir members who sign up early can even suggest what they would like to sing!"

If you are interested, whether you are an individual or would like to volunteer an existing choir, please contact Fran Newman at the school. Call on **01296 338201** or email fnewman@ahs.bucks.sch.uk



Nature's way to beat the burglar

Help to 'nip crime in the bud' this spring by using defensive planting as a means of protecting your property from would-be thieves.

Prickly bushes can enhance the security of boundaries, around drainpipes or beneath ground floor windows, making forced entry more difficult and less attractive to would-be burglars as well as being a simple, inexpensive and environmentally friendly crime prevention tool.

For more information or a defensive planting leaflet, please call into:

- Buckingham Nurseries and Garden Centre, Tingewick Road, Buckingham, MK18 4AE
- Haddenham Garden Centre, Stanbridge Road, Haddenham, Bucks. HP17 8HN
- Tring Garden Centre (Wyevale), Bulbourne Road, Tring, HP23 5HF
- Worlds End Garden Centre (Wyevale), Aylesbury Road, Wendover, HP22 6BD

Alternatively, if you are unable to travel due to a disability, please contact the Council on **01296 585615** and we can arrange to post the leaflet.



Council and Police working together to reduce crime and disorder.



Simnel Cake

Simnel cakes have been known since mediaeval times, and were originally a Mothering Sunday tradition, when young girls in domestic service would make one to be taken home to their mothers.

Ingredients

175g / 7oz plain flour
 50g / 2oz ground almonds
 1/2 tsp baking powder
 1/2 tsp grated nutmeg
 1/2 tsp mixed spice
 1 lemon (rind grated)
 3 medium eggs beaten
 175g / 7oz caster sugar
 175g / 7oz soft butter
 200g / 8oz sultanas
 200g / 8oz raisins
 50g glace cherries (halved and washed)
 1tbsp apricot jam
 500g / 1lb marzipan
 1 bag of sugared eggs

Method

1. Pre-heat the oven to Gas Mark 3. Grease and line a 9" round tin.
 2. Put flour, ground almonds, baking powder, nutmeg, and mixed spice in a large bowl. Add the lemon rind and stir together.
 3. Put the butter and sugar in a separate bowl and beat together using a wooden spoon or electric mixer, until light and fluffy. Add half the egg along with one tablespoon of the flour mix and beat well. Repeat with the remaining egg. Fold in the rest of the flour mixture followed by the dry fruit and cherries.
 4. Place half the mixture in the tin, cut the marzipan in half and roll to a disk and place in the middle and top with the rest of the mixture.
 5. Bake in the oven for 35-40 minutes or until golden brown and springs when touched. Leave to cool.
 6. Spread the apricot jam over the cake and roll and top with the remaining marzipan, decorate with the sugared eggs and sprinkle with icing sugar.
- If individual cakes are wanted, just divide the cake mix between 12 cup cake cases and proceed as with the main recipe.

Recipe provided by Louise at www.deliciousbydesign.co.uk

A Youths-Eye View

Here at the Town Council we like to know what young Aylesburians are thinking and every so often we invite a teenager to write an article for us, on a subject of their choice. Today's contributors are Tom Steeples, Dave Brown and Souroush Kassrai. These three Aylesbury Grammar School students would like to work in the media and so we have given them this opportunity to write for this magazine.

They have also visited the Town Hall and the offices of 'Bluepepper Designs' to learn about magazine production, layout and design. As you will see, their interests are varied and they are keen to keep up with current affairs.

Recession in Aylesbury

Two years into the recession, what have been the consequences for Aylesbury? Are we recovering? Or are we still experiencing financial troubles?

Walking around Friar's Square and the High Street, the effects of the recession can be seen. Some familiar and much loved Aylesbury shops have disappeared, and been replaced with different businesses.

When Woolworths in Friar's Square closed, it left many without a job, leading to economic hardship for them. HBOS announced the loss of 800 jobs in Aylesbury. How has business reacted to this? It was announced last month that some firms were collectively spending £1.2 million to send jobs abroad. It is not likely that employees of the Buckingham-based Deloitte and Bevan Brittan (two of the offending companies) went out rejoicing.

David Lidington, Conservative MP for Aylesbury, has called these job losses "devastating". He has promised to help constituents who face job losses "in any way he can."

With these problems affecting Aylesbury, what hope is there for the community?

The new Waterside theatre is due to be completed in June 2010, creating approximately 1,100 jobs for local people. Good news is that despite many lay-offs in local industries, Aylesbury still has one of the lowest unemployment rates in the country*.

There is light at the end of our metaphorical tunnel; with new businesses emerging, new housing being built, and sectors of Aylesbury being redeveloped, we can anticipate that Aylesbury will benefit from economic recovery over the coming year.

Tom Steeples

Let it Snow!

The prospect of snow at Christmas had us all excited; and this time we were not left disappointed. As the nation was covered in a white blanket, Aylesbury truly felt the snow's presence.

Snowflakes continued to fall into 2010. Aylesbury saw up to seven inches! Enjoyment was evidenced by the numerous snow-sculptures people had made all across town. For many, the snow led to an extended holiday period. In particular the school closures allowed students to enjoy days off, frolicking outdoors.

It was wonderful to see the friendly, community spirit inspired by the snow. Many helped others in their neighbourhood by clearing driveways, helping people to cross icy streets, and even offering to do grocery shopping for those who couldn't manage easily. As families helped each other, friends, neighbours and even strangers, we were all reminded of what the holiday spirit was about.

Although many in the community welcomed the positive social effects of this year's winter, others found themselves frustrated. The snow forced many to miss work, unable to cope with icy travel conditions and child care issues. The A41 was very badly affected, and many felt it was not worth taking travel risks. There were large disruptions for commuters across Bucks. Despite this, the gritters did a great job in dealing with Aylesbury's main roads, allowing for safer journeys. On the whole, Aylesbury was well-governed enough to avoid the major problems encountered elsewhere in the country.

In short, it is safe to say the snow-filled winter did hold some pleasant surprises for us. Perhaps we'll be seeing the snow falling, all over again, this time next year. And long may the community spirit continue after the snow has melted!

Soroush Kassrai

What will the new Waterside theatre bring to Aylesbury?

On first sight, with all the talk of Aylesbury's footballing superstars at the re-formed Aylesbury FC, the massive construction under way at the junction of Exchange Street and Walton Street could have easily been taken for their spectacular new home ground. Unfortunately for them, this is not the case. The rising edifice opposite Aylesbury's infamous 'Blue Leany' is in fact the Waterside Theatre. It is set to open in spring this year, and with up to 300,000 people expected to visit the new venue each year, it is without doubt that it will have a significant effect on the area.

Living in the centre of Aylesbury throughout all 16 years of my life, I have witnessed many changes, most notably the new Odeon cinema, the fantastic Aqua Vale swimming pool and gym and, most recently, the modernisation of Aylesbury bus and train stations along with 'Bourg Walk' bridge.

I strongly believe that the Waterside theatre will follow suit, and be a huge success attracting thousands of people to the area. They will have the chance to admire the diverse programme of live performances it will stage, which will be managed by ATG, the second largest theatre operator in the UK. This venue will mean that Aylesbury people will no longer have to travel to places such as Milton Keynes or London, just to watch a musical production. With Aylesbury's new theatre, local residents will have all of this on their doorstep.

Not only will it benefit adults, but also, I feel, as a member of the younger generation, it will give us the chance to watch superb music artists perform at this arena. Along with this, it could give local musicians or drama groups the breakthrough they need, as they will have a superb home venue, where they will be able to demonstrate their talents. Also, the theatre will attract a wide variety of celebrity acts and musical productions, able to perform in front of a 1,200 capacity auditorium. This new venue has great possibilities for Aylesbury, and with its ideal placement, just outside the town centre and in close proximity to the bus station, it is sure to be a fantastic success.

Dave Brown

**The latest statistics from the Buckinghamshire Economic and Learning Partnership have provided good news with the number claiming Job Seekers Allowance falling to 2.2 per cent of working age residents – the third best result of all Counties. All of our Districts again have claimant count rates below national and regional averages.*



Recycling: start them young!

Love Food, Hate Waste

UK households are throwing away 8.3m tonnes of food a year, most of which is perfectly edible. A typical family with kids bins £680 worth. Equally unsettling is the environmental cost – the wasted water and energy in growing, packing and transporting uneaten food and the methane it produces in landfill. So, how can we do better?

1) Send less food to landfill

WRAP, the UK authority on waste & recycling, recommends that we plan meals, manage portions, keep an eye on 'use by' dates, and freeze surplus (See lovefoodhatewaste.com).

2) Compost food waste

Over 30% of average household waste could be composted. Peelings and tea bags can be converted into rich food for your garden. Home composting doesn't starve waste of oxygen so it releases very little of the potent greenhouse gas methane.

3) Recycle food containers

On average the UK resident sends 2000kg of waste to landfill every year. Why not recycle?



Composting produces rich soil for plants

Aluminium cans are one of the most cost effective materials to recycle. Compared to manufacture from scratch around 95% of energy can be saved. 80% of all glass sent to recycling reappears in the UK, mostly as new bottles and jars.

For more green, money saving tips, call the Energy Saving Trust on 0800 512 012.

Photos courtesy of cocoonyourhome.co.uk

Aylesbury Town Grants

The organisation **Learning Together and Living in Harmony** was granted £1,200. Two hundred people attended a conference held during National Inter-Faith week where members of different communities and religions were invited to take part in order to gain a greater understanding of each others' cultures and faiths.

The **Indian Cultural Society** received £1,000 funding towards a Diwali dinner and dance. One hundred and seventy people took part and there were activities for all ages to enjoy.

Prebendal Farm Residents' Group was awarded £243 towards a community Christmas party. Seventy people attended the event. The children took part in various activities and families enjoyed the disco.

Members of **The National Association of Widows** enjoyed a Christmas dinner at the Bell, Winslow followed by a magic lantern show. A cheque for £355 was given.



Cllrs Kevin Peters and Mark Willis present a cheque to CHAT

CHAT held their Children's Christmas party at the Holiday Inn, Aston Clinton, and were awarded £378. Colonel Custard and Jacque-in-the-Box entertained the children from the Wing Residential Respite Care Unit and children who attend the Sue Nicholls

Centre. Santa made an appearance and each child received a present.

St John Men's Club received £600 for funding towards activities and entertainment for fourteen men attending their day club. The members suffer from early mental health problems or depression. Members take part in quizzes, games, discussions on subjects of interest or just spend a relaxing sociable afternoon with others.

Vitalise – combining recreation with respite

Vitalise is a national charity that firmly believes disabled people and carers should have the same holiday opportunities as anyone else would reasonably expect. On every Vitalise break the accent is very much on activity and enjoyment. Vitalise's enabling environment allows guests to enjoy activities that would otherwise be very difficult or even impossible for them to participate in.

£1,245 was awarded to **Vitalise** to help provide 20 care break weeks for disabled people in Aylesbury. Vitalise have four fully accessible centres around the UK offering 24 hour on-call nursing care. Last year twelve Aylesbury residents benefited from 20 weeks of breaks. For more information call 0845 345 1970 or visit www.vitalise.org.uk

Aylesbury Youth Motor Project received funding of £1,250 towards providing a pre/post test course for new drivers. The organisation provides educational and vocational skills relevant to the motor industry, and will improve the participants' employment prospects and build up their self esteem.

Aylesbury Credit Union was awarded £2,000 towards offering more outlets, to help in troubled areas of Aylesbury. The ACU is a non profit making organisation which offers short term loans at low interest.

Aylesbury Retail Against Crime was awarded £1,000 towards expansion of a scheme to help prevent retail losses. It would help to reduce anti-social behaviour and to provide a safe and secure environment for those who live, work and shop in the Aylesbury area.

If you belong to a non-profit-making organisation which provides a service for a section of the community, you may qualify for a grant. Please contact Mrs. Pat Phillips at Aylesbury Town Council, Town Hall, 5 Church Street, Aylesbury, Bucks. HP20 2QP Telephone: 01296 425678 or email: p.phillips@aylesburytowncouncil.gov.uk for application forms or further information.

Contact us

If you would like any further information on anything in this magazine, or if you would like to contribute to the next issue, please contact: Margaret Wagstaffe, Project Officer at Aylesbury Town Council, Town Hall, 5 Church Street, Aylesbury, Bucks. HP20 2QP T: 01296 425678 e: m.wagstaffe@aylesburytowncouncil.gov.uk

Acknowledgement - I would like to thank the Members and Staff of Aylesbury Town Council for their help in the production of this magazine.

Margaret Wagstaffe, Project Officer

Mayoral Engagements

The Mayor, Cllr Mrs Ranjula Takodra has attended a variety of functions, awards and community projects over recent months.

She has noted how many people work in different aspects of our local community for the inclusion of all. The selflessness and dedication of these people is inspirational and goes to show that there are positive role models within our society.

The engagements the Mayor attended included: The judging and then presentation of Cliff Productions' Short Cuts Film Festival, the Pace Centre, the Aylesbury West Indian Association cultural evening dinner and dance, the 20th anniversary of the Florence Nightingale Hospice, Age Concern's Big Bulb Plant, the Save Your Rights seminar and debate at Sir Henry Floyd Grammar School, the Youth Offending Service's Black History & Asian Awareness Event, the



Ben Rodwell and Cllr Mrs Ranjula Takodra at The Masonic Lodge

Soroptimists' Gateway club tea party, the Grange School Eco Enterprise Day, the Town Centre Santa's Parade, the "laying up" of the Standard for the Normandy Veterans Association, the Prebendal Farm Residents' Association Christmas Party, the official opening of the Holy Trinity Church's new foyer and rooms, a Buckinghamshire Freemasons Charity

Lunch, the National Autistic Society's Christmas Party and finally hosting the annual Mayor's Carol Service at St Mary's Church. All in all a very busy few months!

The Deputy Mayor, Cllr Graham Webster was kept busy with attending community projects, formal and civic events including a visit to the MS centre where he witnessed how tirelessly they work to improve the lives of people with MS.

He also attended: the presentation of the Lord Lieutenant's Awards at John Howard Barracks in Milton Keynes, the Mandeville School Remembrance Service and the Welcome Home Parade of the 23 Pioneer Regiment where hundreds of people lined the streets of Bicester to welcome the troops home.

Music at lunchtime at St Mary's Church

The lunchtime concerts at St Mary's Church in Aylesbury on Thursdays at 12.45pm continue apace, offering outstanding classical music in performances which almost always are of the very highest standard for only £2.00. If you haven't yet been, you will find the atmosphere informal and friendly: you can bring your shopping, you can have some delicious food in the refectory, meet your friends and talk to the musicians. And we give out free programme notes if you want to know a little more about the music.

I have been asked to write a short review of one of our concerts. I've simply chosen the last one before my deadline for this article, given on 14th January (an awful day, the thaw just beginning) by a violin and piano duo starting out professionally from the Royal College of Music, Benjamin Norris and Denise Lee. They played a thrilling piece of youthful Brahms with great passion and ardour, and a Mozart Sonata with touching tenderness.

But the main work was the 30 minute F minor Violin Sonata by Prokofiev, one of the most difficult in the whole repertoire. Completed in 1946 it is really about the War and the oppression by the Stalin regime during 'The Terror': parts are heartbreakingly poignant, but there is also music of tremendous violence and dissonance. Incredibly, our two young players jumped over every technical hurdle, and, moreover, communicated the power of the music unstintingly. The awed silence of the audience after the last note said everything.

After enthusiastic applause, Ben and Denise let us down gently with an encore called The Bee. "Lovely concert – well worth braving the elements", said one of the audience. "Simply brilliant", "Fabulous", "Absolutely wonderful", "Profoundly moving Prokofiev", "Absolutely wonderful, captured my mood exactly", "Wonderful music, brilliantly played", were among other comments.

So please – just come along!

More detailed information can be found on www.aylesburyvibe.info

David Mulraney



What's On March - May 2010

March

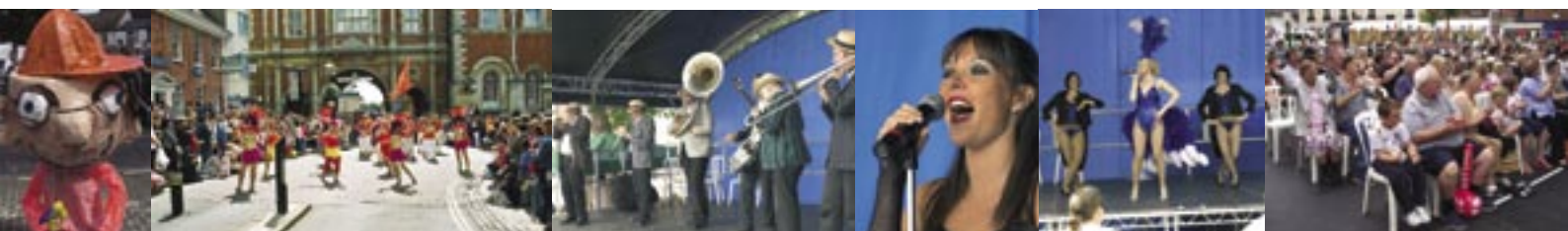
23	Farmers' Market - activities and fresh produce	Adult	FREE	9.00am - 2.00pm	Market Square, Aylesbury
25	Aylesbury Music Centre Soloists Competition	All	£2	12.45pm	St Mary's Church
26	Comedy Club	Adult	£8/£9	8.00pm	Civic Centre
26	Film Night at the Limelight	Adult	£6	8.00pm	Queens Park Centre
27	Oo Bop Sh'Bam	Adult	£10/£8	8.00pm	Queens Park Centre
27	Romans (until September)	Family	FREE	Daily	County Museum

April

1	Cathy Bell, mezzo, and Jon Stainsby, baritone, in Lenten Songs	£2		12.45pm	St Mary's Church
2	National Specialist Collectors Fair	Family (Free after 12.00pm)		10.00am	Civic Centre
6	High School Hits	Family	£7.50	2.00pm	Civic Centre
8	Vienna Guy, flute, and Janine Guy, piano	All	£2	12.45pm	St Mary's Church
8	Easter Treasure Hunt	Family	FREE	11.00am - 3.00pm	Aylesbury High Street
9	The Searchers	Adult	£17	TBA	Civic Centre
10	Bjorn Again	Family	£15/£18	3.00pm & 8.00pm	Civic Centre
12	Handmade Books	Adult	£35/£28	10.00am - 4.00pm	Queens Park Centre
12	A Pocketful of Rabbits	7yrs+	£23/£19	10.00am - 3.00pm	Queens Park Centre
12	Silk Painting	7 - 14yrs	£23/£19	10.00am - 3.00pm	Queens Park Centre
13	Pottery	7 - 11yrs	£25/£20	10.00am - 3.00pm	Queens Park Centre
13-14	The Golden Egg and Sheep's Wool Basket	10yrs+	£36/£32	10.00am - 3.00pm	Queens Park Centre
13-14	Painting with rollers, acrylics and lithographic inks	Adult	£75/£60	10.00am - 4.00pm	Queens Park Centre
14	Pottery	10 - 14yrs	£25/£20	10.00am - 3.00pm	Queens Park Centre
15	Georgia Knowler, soprano, & Maria Razumovskaya, piano		£2	12.45pm	St Mary's Church
15	Inflatable Fun Day	Family	FREE	11.00am - 3.00pm	Market Square, Aylesbury
16	Roy Mette & The Heaters	Adult	£10/£9	8.00pm	Queens Park Centre
17	Tannahill Weavers	Adult	£10/£8.50	8.00pm	Queens Park Centre
17	T-Rextasy & Aladdin Sane	Adult	£16	8.00pm	Civic Centre
18	Wedding Fair	Family	FREE	11.00am	Civic Centre
20	Stephen Holbrook	Adult	£16/£17	7.30pm	Civic Centre
22	Roy Chubby Brown	Adult	£19.50	7.30pm	Civic Centre
22	Steinberg Duo (violin and piano)	All	£2	12.45pm	St Mary's Church
23	Mad About The Musicals	Family	£16.50	7.30pm	Civic Centre
23	Isy Suttie	Adult	£8/£7	8.00pm	Queens Park Centre
24	Classical Music Concert - Annett Busse	Adult	£10/£8	8.00pm	Queens Park Centre
24	St George's Day Celebrations	Family	FREE	11.00am - 4.00pm	Kingsbury
24	St George's Day Children's activities*	Family		11.00am - 3.00pm	The King's Head, Aylesbury
24	St George's Food & Beer Festival	Adult		11.00am - 11.00pm	The King's Head, Aylesbury
24	Rock and Fossil Day	Family	FREE		County Museum
25	St George's Day Parade and Service	Family	FREE		Aylesbury Town Centre
27	Farmers' Market - activities and fresh produce	Adult	FREE	9.00am - 2.00pm	Market Square, Aylesbury
28	Piatti String Quartet	All	£2	7.30pm	St Mary's Church
29	Ladyboys of Bangkok	Family	£19/£17	7.30pm	Civic Centre
29	Sharon Barnea and Famia Choi Castro, piano four hands - 2nd concert	All	£2	12.45pm	St Mary's Church

* charge for activities

All details correct at time of going to press.



What's On March - May 2010

May

1	Green Man Festival	Family	FREE		County Museum
6	Karelia String Quartet	All	£2	12.45pm	St Mary's Church
7	Wild Willy Barrett Sleeping Dogz	Adult	£12/£10	8.00pm	Queens Park Centre
8	Open Day	Family	FREE	11.00am - 3.00pm	Queens Park Centre
8	The Little Big Club	Family	£10	1.00pm & 3.30pm	Civic Centre
8	Legends of the Wildwood	Family	FREE	Daily	County Museum
9	Robot Wars	Family	FREE	11.00am - 3.00pm	Kingsbury
13	Mansoon Bow, violin, Sam Liu, piano	All	£2	12.45pm	St Mary's Church
14/15	That Face by Polly Stenham	Adult	£8/£6.50	8.00pm	Queens Park Centre
15	Exhibition of paintings of Hartwell House Gardens (until September)	Family	FREE	Daily	County Museum
15	Animal Fun Time	Family	FREE	11.00am - 3.00pm	Kingsbury
16	Aylesbury's Green Fair	Family	FREE	11.00am - 3.00pm	Market Square, Aylesbury
16	Strictly Ballroom	Adult	£10/£20	See website	Queens Park Centre
16	Mixed Metals Workshop	Adult	£32/£26	10.00am - 4.00pm	Queens Park Centre
16	Solar Plate Printing	Adult	£30/£24*	10.00am - 4.00pm	Queens Park Centre
16	Baboushka Bags	Adult	£20/£16*	10.00am - 4.00pm	Queens Park Centre
20	Lisa Ueda, violin, Richard Deakin, piano	All	£2	12.45pm	St Mary's Church
21	John O'Leary's Sugarkane	Adult	£10/£9	8.00pm	Queens Park Centre
22	Rajeev Sharma & Friends	Adult	£15/£12	8.00pm	Queens Park Centre
23	James Hickman & Dan Cassidy	Adult	£10/£8	8.00pm	Queens Park Centre
25	Farmers' Market - activities and fresh produce	Adult	FREE	9.00am - 2.00pm	Market Square, Aylesbury
28	Film Night at the Limelight	Adult	£6	8.00pm	Queens Park Centre
29	Jazz Juice	Adult	£9/£7	8.00pm	Queens Park Centre

*material expense

Regular Events

School Savers at Jardines on a Wednesday and Thursday 3.00pm - 6.00pm. Two games for £5.00 (Jardines members two games for £4.00) (Term time only and subject to lane availability).

Easter Holiday Activities at County Museum

6, 7, 8, 13, 14 & 15 April - Join in the exciting family activities this holiday. Contact the museum for times and booking details. Cost: £2.00 per child.

Music at St Mary's Church

Thursday lunchtimes 12.45pm start, St Mary's Church £2.00.



Photographs show a range of activities at Queens Park Centre. Photographs courtesy of Queens Park Centre.



For event details: Bucks County Museum - 01296 331441 The King's Head - 01296 381501 St Mary's Church - 01296 437641
Civic Centre - 01296 486009 www.aylesburycivic.org Limelight Theatre Queens Park Art Centre - 01296 424332 www.qpc.org
Also see: www.aylesburyvibe.info and www.aylesburytowncouncil.gov.uk

AYLESBURY TOWN COUNCIL

**FREE
FAMILY
ACTIVITIES**

St George's Day Fun Day
Saturday 24th April 2010
11.00am – 4.00pm in Kingsbury

A day of traditional music, games and celebration
of all things English for the whole family.



St George's Day Parade and Service
Sunday 25th April 2010, 2.30pm

The traditional Scout Association Annual Parade and Service. The procession starts outside the Civic Centre and parades through the Market Square before arriving at St Mary's Church at 3.00pm. After the service, the procession will parade to Kingsbury for some final words and farewell.

St George's Day Weekend Celebrations
Saturday 24th and Sunday 25th April

www.aylesburytowncouncil.gov.uk

Aylesbury's annual Green Fair in Market Square, 16th May

A demonstration of Aylesbury's 'green values' using 3 zones:

Farmers' Market, Transport and Waste (bus, train, eco taxis, cycling, walking, car sharing and waste disposal, landfill, recycling) and **Social and Environmental Sustainability** (importance of community, bees and the environment, electricity generation/carbon trust, Fairtrade, eco products)

See www.aylesburytowncouncil.gov.uk for more information or phone us on 01296 425678.

Aylesbury Town Council
Town Hall, 5 Church Street, Aylesbury, Bucks. HP20 2QP
Tel: **01296 425678** Fax: **01296 426134**
Email: info@aylesburytowncouncil.gov.uk
www.aylesburytowncouncil.gov.uk

Designed and printed by
bluepepperdesigns
creative design and print

8 Temple Square, Aylesbury, Bucks. HP20 2QH
Telephone: **01296 424699** Website: www.bpdesigns.co.uk