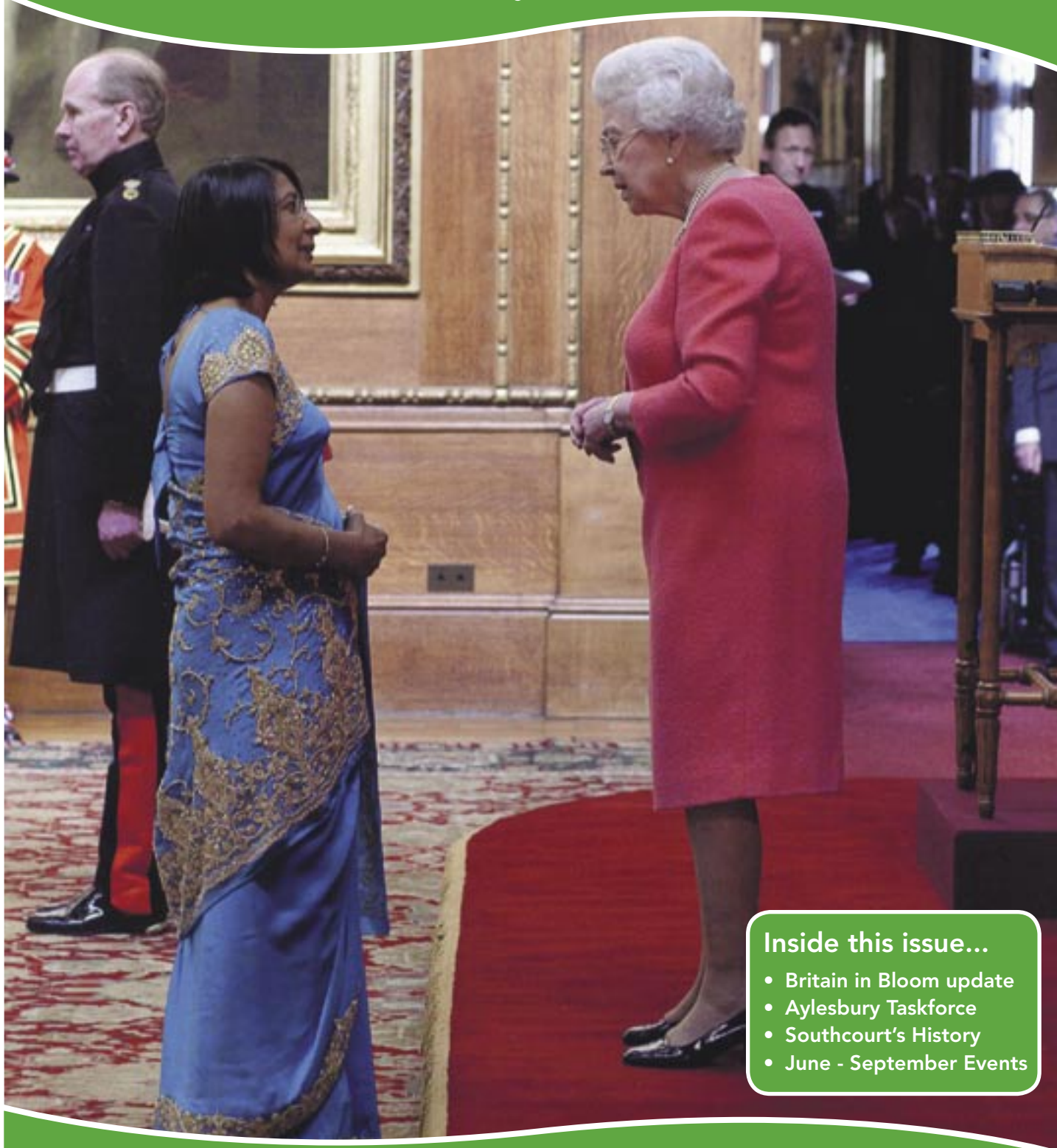


Aylesbury Town matters

Aylesbury Town Council Magazine
Issue Seventeen June 2010



Serving the people of Aylesbury



Inside this issue...

- Britain in Bloom update
- Aylesbury Taskforce
- Southcourt's History
- June - September Events



'Take pride in Aylesbury Town'
www.aylesburytowncouncil.gov.uk



Welcome Note

Welcome to the 17th issue of Aylesbury Town Matters, Aylesbury Town Council's magazine, covering local news and events.

There is a fabulous programme of free entertainment planned for June, July and August and we hope you will come into Town and enjoy the fun. As you will see on pages 22 and 23, there is something happening every weekend and during school holidays we have additional attractions to keep the youngsters amused. Our fantastic 'Hobble on the Cobbles' is back (see last page) and there will be music to suit every taste.

We have articles on John Wilkes and the Hellfire Club, St Mary's Church, Community News and much more. So read on, enjoy and please keep sending your feedback.

Cllr Steve Patrick
Leader of the Council



My Year as Mayor

by Cllr Mrs Ranjula Takodra MBE

Cllr Ranjula Takodra MBE, who finished her year as Mayor of Aylesbury in May, enjoyed her term of office enormously. Commenting on her term Ranjula said, "I have been very proud to serve Aylesbury. As a citizen I have seen the Town grow from strength to strength over the years. Aylesbury Town Council has been at the forefront of making a real difference to the Town. I feel very honoured to be a member of the Council and to have been the elected Mayor for the past year."

Ranjula has great affection for Aylesbury. "To be an Indian woman and to be accepted by the wider community", she explained, "and to be an ambassador for this magnificent Town, which I have made my home and which has been so good to me, is one of the proudest achievements of my life."

Ranjula has worked to a demanding schedule of civic engagements, having attended over 200 events, including open days, AGMs, official openings, rallies, award ceremonies, charity functions and anniversaries over the past year, both in and out of the Town. "I have enjoyed them all", she said, "and I hope I have in some way contributed to them all." Our thanks to Ranjula for her dedication and hard work this year, and our very best wishes for her future.

Contents:

	Page
Welcome Note	2
My Year as Mayor	2
Britain in Bloom Update	3
What's Gone and What's On...	4 & 5
Aylesbury, John Wilkes and the Hellfire Club	6 & 7
Local News	8 & 9
Community News	10
Britain in Bloom Projects	11
Ward Map	12
Aylesbury Taskforce	13
Aylesbury College Courses	14
St Mary the Virgin, Aylesbury	15
Southcourt – A Brief History	16
Free Fire Safety Checks	17
Nightsafe Events	17
Celebrating Aylesbury's History	18
Young Archaeologists' Club	19
Aylesbury Town Grants	20
Mayoral Engagements	21
What's On June - September	22 & 23
Hobble on the Cobbles	24

Contact Details:

Aylesbury Town Council
Town Hall, 5 Church Street, Aylesbury,
Buckinghamshire HP20 2QP
Tel: **01296 425678** Fax: **01296 426134**
E: info@aylesburytowncouncil.gov.uk
www.aylesburytowncouncil.gov.uk

Opening hours:
Monday - Thursday 8.45 am - 5.15 pm
Friday 8.45 am - 4.45 pm

Front cover image: Cllr Ranjula Takodra receiving her MBE from Her Majesty the Queen at Buckingham Palace. Photograph copyright is owned by BCA Films.

Aylesbury Town Council is a member of English Historic Towns Forum and twinned with Bourg-en-Bresse.



Mixed Sources

Product group from well-managed forests, and other controlled sources
www.fsc.org Cert no. TT-COC-002702
© 1996 Forest Stewardship Council



Permanent planting on The Mount

Britain in Bloom Update

Once again, Aylesbury is gearing up for the annual entry in the regional heat of the Royal Horticultural Society's "Britain in Bloom" competition.

Britain in Bloom was established in the early seventies and every year thousands of communities submit their entries. The core elements of the competition are horticultural enthusiasm, community involvement, environmental friendliness and sustainability. Regular readers of Town Matters will know that we in Aylesbury have put massive efforts into each of these areas in the last few years.

Horticultural enthusiasm is demonstrated by our stunning summer flower displays, plus the ever increasing spread of permanent plantings of shrubs, trees and herbaceous borders.

We have numerous community groups who have demonstrated their commitment to our environment. Outstanding examples of these are the volunteers who created The Florence Nightingale Hospice and gardens twenty years ago, and have nurtured and sustained the gardens ever since; the Volunteers of the Riverside Walk Group, with their year-on-year commitment to improving this much used amenity and making it more and more hospitable to a wide range of flora and fauna; Vale Volunteers and many more.

Where environmental friendliness is concerned, through our new transport, cycling and walking facilities we have reduced Aylesbury's carbon footprint

by 7%, something few other towns and cities in Britain can claim. We have an excellent recycling record. Finally, so far as sustainability is concerned, all our new houses now have to be environmentally sympathetic. We are planting thousands of trees every year, and are constantly publishing information on protecting our planet. As a result of these efforts we feel that Aylesbury has a record to be proud of.

Amongst other projects in our year-round Britain in Bloom programme, this spring we have renovated and regenerated Walton Pond, and we are working with VAHT to improve the Penn Road end of the Bourg Bridge (see page 11).

Judging of Britain in Bloom will take place in July and the three local councils will be working together to make sure that, on the day, Aylesbury is in pristine condition. We would like to encourage community groups to improve their areas and will supply expertise and possibly help with tools, seeds and shrubs for those wanting to make a new community garden.

Every little helps, so please do your bit. Let the Council know about fly-tipped rubbish, litter or graffiti. If you can, tidy your gardens, clean up your streets and make your environment more attractive, so that Aylesbury will be an even greater place to live.

Margaret Wagstaffe
Senior Officer

What's Gone and What's On...



Spring Fun in Aylesbury

Starting with exhibitions on 'Legends of the Wildwood' and '50 years of Toys' at the County Museum in Church Street, continuing with the 'Adventure Bus' and 'Animal Funtime' in Kingsbury, followed by half term attractions like the climbing wall, a mega slide, bungee trampolining and face painting in the Market Square, spring has been good fun for Aylesbury youngsters.



Valentine's Day, a new Town Centre event, was popular with the young. We hope it resulted in a few new romances. Speedway Sunday in Kingsbury was a great success, as was the Urban Roots Youth Event – a festival celebrating Aylesbury's diverse roots through the arts, music and food. For the adults the Spring Fashion show at Friars Square showed us a selection of delightful new garment ranges.



St George's Day, that most English of celebrations, burst into life on Saturday 24 April. The day was spent with games, street theatre, storytelling and the traditional rescue of the Maiden in Distress from the clutches of the Fiery Dragon by good St George and his trusty sword. The King's Head joined the fun, also in great English tradition, with childrens' games and a beer festival. 'Visiting' ales were given a rousing welcome by the good folk of Aylesbury. Even the ferocious dragon was given a gentle stroke on the nose by a diminutive fan.



Sunday 25 April saw another great English tradition celebrated. The annual Scout Association parade marched from the Market Square to St Mary's Church, where their colours were re-dedicated and their promise renewed.



Other spring events in Aylesbury included the Green Man Festival at the County Museum, and Motorcycle Awareness Day in Kingsbury. The boisterous and much loved 'Robot Wars' in Kingsbury provided mayhem and carnage as the animatrons battled for supremacy, to the roaring appreciation of the excited crowds.



Maintaining Aylesbury's green credentials, the Green Fair, covering local farmers' markets, sustainable transport, waste management and carbon footprint reduction was well attended by both residents and visitors from further afield. Growing in popularity, this event is an important annual salute to the work being done by residents and the public sector alike to make Aylesbury a healthier place to live.

Spring was great, but now we look forward to fun for the summer. We have our annual Summer in the Streets featuring music every weekend in Kingsbury and Market Square and the World Cup Football Frenzy.

The Roald Dahl Festival, this year featuring the 'Fabulous Mr Fox', starts the Aylesbury Festival. Aylesbury Festival features a range of activities including art, music, history (The Romans in Aylesbury) and much more. The Festival culminates in Aylesbury's End of the Pier Show, with many attractions such as the ever-popular David Alexander's Travelling Show. Look out for the fabulous 'Hobble on the Cobbles' in the Market Square, Parklife and Proms in the Park, Charter Day and much, much more. For a full list of forthcoming events see 'What's On' at: www.aylesburytowncouncil.gov.uk

Remember, entertainment in Kingsbury, the Market Square and Vale Park is free for all the family, so come along, join us and enjoy the fun.

Margaret Wagstaffe and Claire Bignell



Aylesbury, John Wilkes and the Hellfire Club

Although the Order of St Francis of Wycombe, as it was known by its members, was not based in Aylesbury, two of its 'monks' lived here. Many myths surround this most infamous of clubs. Who was and was not a member is difficult to establish, as the 'brothers' adopted ecclesiastical names for themselves. It has been said that Fredrick, Prince of Wales, was a member at one time, as also, supposedly, was the Marquis of Bute. (Bute later became Prime Minister, but the exposure of this scandalous club's workings eventually brought his government crashing down).

Members ranged from gentlemen of rank to poets and humorists. Noblewomen were said to have been amongst the nuns who took part in the rituals of the order but no indisputable evidence for this has ever emerged. Certainly prostitutes were transported up the Thames from London to the Abbey of Medmenham, rented as a meeting place prior to the club's move to the caves at West Wycombe. Orgies and drinking bouts were given a mock religious tone, as Catholic rituals were parodied.

The 'brothers' in flowing robes would retreat to their cells with masked 'nuns' and a bottle or two of claret, to perform their 'devotions'. Devil worship seems to have been part of the programme. On one occasion, when the 'brothers' were trying to raise Beelzebub, John Wilkes (of whom more below) attached a pair of horns and a forked tail to an ape, and released it into the cave. The 'brothers', believing they had succeeded beyond their wildest dreams, fled screaming from the apparition.

So who were the two gentlemen with Aylesbury connections?

The first was 'John of Aylesbury' to give him his brotherhood title. He was more commonly known to history as John Wilkes, MP for Aylesbury. Wilkes lived at Prebendal House situated next door to St Mary's Church. He was uncommonly ugly and yet he claimed that if he could just talk to a woman for half an hour he could charm her into bed. The other Aylesbury man was Dr Benjamin Bates of Rickford's Hill.

Wilkes was in truth a fairly junior 'brother' of the club and by no means a member of the inner circle of the order. The founder and leading light, Sir Francis Dashwood, Bt., who was 'Francis of Wycombe' for the order, was Chancellor of the Exchequer in the Government led by Bute.

Wilkes had spent £7,000 (£350,000 today) on winning the Parliamentary seat of Aylesbury. He was therefore in a dire need of funds and urgently required a sinecure from the state. In the early days of the Bute Ministry John applied to become the Turkish Ambassador, and also for a position with the Board of Trade, neither of which were forthcoming; nor did anything come of his bid to become the next Governor General of Canada. A rejected Wilkes sought personal revenge against the Government and as a consequence became one of the founders of modern journalism.

He launched a newspaper called 'The North Briton', which was an allusion to the much-resented Scottish influence at court. Gordon Brown and Alistair Darling, though mauled by modern media, have tasted but a small sample of the vitriol with which the then Prime Minister, the Marquis of Bute, was obliged to contend. Wilkes was writing in the 1760s. Memories of the rebellion of 1745, when Bonnie Prince Charlie's Highlanders had marched as far South as Derby, were still fresh.

Mobs, whipped up by Wilkes's words, paraded around London bearing aloft a petticoat and a boot. These items symbolised the Dowager Princess of Wales and Lord Bute, who were widely believed to be conducting a tempestuous extra-marital relationship. Proof of the liaison was scant, but this didn't stop the London mob.

Bute had negotiated a peace treaty with France that in 1763 brought to an end the Seven Years War. Wilkes considered the terms too generous. He believed they were influenced by considerations of familial interests since the Royal families of Europe were so closely inter-married. High politics of state mixed dangerously with personal enmities.

The first clash between Wilkes and the Government came when the Lord Steward of the Royal Household, Lord Talbot took offence at an item 'The North Briton' had published. Lord Talbot sought satisfaction as only a gentleman could. The ensuing duel was a complete farce. Wilkes prepared by drinking with the Hellfire 'brotherhood' until 4.00am. He then complained to Talbot that it would be ungallant to shoot a man in his condition at such an early hour of the morning. Both men then missed their respective targets but honour was satisfied. Wilkes hugged Lord Talbot effusively afterwards, as he was still quite drunk.



Prebendal House in Parson's Fee, formerly the home of John Wilkes. Photo taken in 1980 courtesy of The Aylesbury Society.

Wilkes was soon in trouble again, however, as he was sued for seditious libel after the 45th issue of 'The North Briton'. He was briefly thrown in the Tower of London but was released after his trial went against the Government. He continued to campaign for individual liberties.

Wilkes set in train many changes to the constitution, establishing freedom of speech and the personal liberty which we take for granted today. He went on to become Lord Mayor of London in later life. John Wilkes deserves a statue outside the proposed new law courts for the town. How long would it be though, before a barrister pointed out that there was a far bigger rogue than his client, in the shape of John Wilkes, immortalised in bronze outside the court?

The other Aylesbury member of the Hellfire Club was, as previously mentioned, Dr Benjamin Bates of Rickford's Hill. He was in all probability the man who

ensured that the imported prostitutes were clean; and dealt with any resulting pregnancies. Bates was born in the North of England but trained in Edinburgh.

He was in general practice in Aylesbury, so when Wilkes received a serious stomach wound from another duel in 1763, it was probably to Bates he turned. Dr Bates was due to go with Lord Despencer on a European Tour in 1781, but his patron died suddenly, before they could embark.

Until the last of his days in 1828, Bates continued to insist that the 'brotherhood' was a harmless gathering intent only on enjoyment, and absolutely nothing more sinister.

Kevin Peters

Local News



The poster features a dark blue background with white stars and a clock face on the right. At the top left is the Florence Nightingale Hospice Charity logo, which includes a sun and the text 'FLORENCE NIGHTINGALE HOSPICE CHARITY' and 'Registered Charity No. 1119499'. The main title 'Nightingale Gemstone Midnight Walk' is in a large, white, serif font. Below it, the date 'Saturday 17th July 2010' is written in a smaller white font. The central text 'Walk with us to raise funds for your local hospice' is in a white, cursive font. Further down, it says 'Aylesbury's first 'ladies only' Midnight Walk in aid of Florence Nightingale Hospice', '6 or 12 mile sponsored walk', and '£15 registration'. At the bottom, it provides registration information: 'To register visit www.fnhospice.org.uk or call 01296 429975'. The bottom of the poster shows silhouettes of a group of women holding hands.

Quarrendon & Meadowcroft Community Action Partnership

Regular monthly meetings giving local residents the opportunity to air their views on community matters.

Guest speakers give talks on a wide range of topics from drug abuse to Aylesbury in Bloom.

Thames Valley Police in attendance most months.

MEETING DATES FOR YOUR DIARY

Tuesday June 8th
7.00pm

Speaker - Diane Fawcett
Town Centre Partnership

Tuesday July 13th
7.00pm

Speaker - TBA

*All meetings held at the
Meadowcroft Community Centre*



'I Did It Otway'

John Otway will be a familiar name to many readers. Born in Aylesbury, he was a stalwart of the local music scene throughout the 70s, best known for his pairing with multi-instrumentalist Wild Willy Barrett. An appearance on The Old Grey Whistle Test – in which his typically manic acrobatics resulted in a rather painful encounter with an amplifier – led to a number 27 hit which was expected by all to be the start of a career as a punk icon... until Otway proceeded to release a schmaltzy orchestral ballad as the follow-up single. It was to be the start of a long, long string of flops promoted with increasingly incredulous publicity stunts, which eventually led to Otway documenting the rise and fall of his career in an autobiography, "Cor Baby That's Really Me".

This year sees the launch of his second autobiography, "I Did It Otway", twenty years on from the first. It picks up from the end of the first book with Otway down, out and literally without a roof over his head. Otway doesn't stay down for long, though, and the book quickly sees him breaking the house record at The Astoria, filling The Royal Albert Hall (backed by his first band – Aylesbury Youth Orchestra), and even succeeding against all odds with a second hit record and appearance on Top Of The Pops. But this wouldn't be an Otway book without the inevitable fall from grace – this time in the form of an abortive (and expensive) attempt at a world tour.

You couldn't ask for better guides on how not to succeed in the music industry. Yet Otway has succeeded. He's crafted his own niche as "Rock and Roll's Greatest Failure", and the self-deprecating humour of both his live shows and his writing will have you laughing out loud – all the while wondering what ridiculous stunt he'll try next.

Both books are available from his website: www.johnotway.com and he will be playing the last Friar's gig at the Civic Centre on 4th June (TBC).

Mark Crutch

Open Gardens 2010

Five mature town gardens will be opening this year in Aylesbury under the National Gardens Scheme on Sunday 27 June from 2.00pm to 6.00pm. Each garden displays the individuality of its owner and their passions, showing a range of ideas and specialities.

13 Walton Dene - town garden with a mixture of planting including alpines and alpine house, perennials, shrubs, a selection of ferns and grasses, vegetables and some exotics.

16 Milton Road - mature town garden featuring oriental and Mediterranean patios and pergolas with grape vines and clematis, woodland fernery and wildlife pond. Numerous hanging baskets and tubs add colour and a display of hostas add rich foliage.

2 Spenser Road - tranquil cottage style garden with many ornamental trees raised from seed. Victorian greenhouse with original features containing a collection of pelargoniums and tender plants. Vegetable garden featuring raised beds.

110 Tring Road - established town garden with mature trees, variety of perennial plants, rose bed and gazebo, pond, alpine raised bed, troughs and vegetable parterre.

185 Tring Road - 1930s 140ft cottage-style garden completely redesigned in 2007. Large fish pond and small wildlife pond, various beds, shrubs, rose beds, pergolas, patios and various specimen exotics.

Combined entrance fee is £4 for adults and free for children. All proceeds go to various national charities including Macmillan, Marie Curie & Crossroads. Homemade teas at 2 Spenser Road. Wheelchair access to 13 Walton Dene and 110 Tring Road.



Elderly Residents – be Alert!

Police have received several reports, some from elderly residents in Aylesbury Vale, of people calling claiming to be from the National Crime Survey and asking if they can visit residents to check their security. Police want to warn all residents, particularly the elderly, not to invite or let people into their homes who cold call wanting to check their security. If you are suspicious of any personal callers do not allow them entry and call the Police immediately.

If you would like security advice visit: www.thamesvalley.police.uk or call your local Crime Reduction Advisor on 0845 8 505 505.

If you know of any elderly residents that would like to get help with security measures being fitted via Aylesbury Vale District Council's 'Home Service', call on 01296 585510.

Community News



Prebendal Farm Community Clean Up

A bright and warm Saturday in March saw a group of people gathering for a large and ambitious stint of spring cleaning, as the entire Prebendal Farm housing estate in the west of Aylesbury was given a much needed tidy up.

Residents, members of the local Residents' Association and others were joined by Town Councillors Tom Ahmed, Freda Roberts MBE and Mike Smith, Council employees Chris Barlow and Alan Neal (who volunteered their assistance), Police Community Support Officers and men and women of Thames Valley Constabulary. All went out armed with litter pickers and bags, and during the course of the next few hours filled numerous bags of rubbish.

Two of the Town Council's staff and one of our vehicles made trips around the estate picking up large items like mattresses and electrical goods which were dumped in the alleyways and removed these to the Rabans Lane waste amenity.

Cllr Mike Smith said *"It was hard work but a very enjoyable day. Residents were very appreciative of our efforts, and certainly the streets and green spaces looked much better once we'd done our rounds. The sunshine on the day only helped to emphasise the fresh look of the estate and a job well done!"*

Mike Smith

California Clean-up Phase 2

Last year the Town Council, working with PCSOs, VAHT, Aylesbury College, local residents and other partners cleared the stretch of California Brook that runs alongside the College. Rubbish was removed from the water and the banks. Overgrown vegetation was cut back, furniture painted and new flowers and shrubs planted, making the whole area safer and more pleasant for residents. This year the Council and its partners are embarking on stage two of the Project. They will be regenerating the other stretch of water, between the end of the Bourg Walk Bridge and Southcourt Baptist Church. Shown here are Paul Neal and Chris Barlow, making the first pass at the jungle of brambles, nettles and bindweed that is choking the banks. More news next issue.



Britain in Bloom Projects



Clearing the concrete. Photo by K. Turner

The new soil bed. Photo by K. Turner

Britain in Bloom project: garages at Penn Road

After the derelict garages at the end of the Bourg Bridge were demolished, Town Council operatives dug up the concrete bases. The concrete removed will be recycled and used as hardcore for the roads in the Council's new Cemetery extension. Two hundred and fifty tons of soil have been imported into the space, which will be turned into a community garden with Vale of Aylesbury Housing Trust, Vale Volunteers, neighbours and the Town Council working together to create a green oasis.



Walton Pond: an update

Readers of the last issue of Aylesbury Town Matters will remember our article on the renovation of Walton Pond. Shown above are some work in progress photos, plus the final result.

The pond isn't finished yet – there are still one or two more improvements in the pipeline, but we hope you will agree that this special place in Aylesbury's heritage is looking a lot smarter for our efforts!



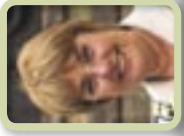
Ward: Elmhurst



Cllr
Mohammed Amjad
07956 803458



Cllr Mrs
Julie Ward
07766 545236



Cllr Mrs
Jenny Puddefoot
01296 612461

Ward: Central

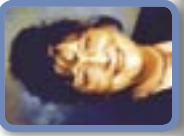


Cllr Steven Mitchell
01296 392096

Ward: Gatehouse



Cllr Kevin Peters
07989 892896



Cllr Mrs
Pat Jamieson
01296 428275

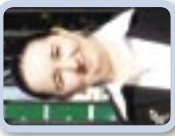


Cllr
Tuffail Hussain
07886 295946

Ward: Quarrendon



Cllr Ray Ghent
01296 489327



Cllr Miss
Noreen O'Sullivan
07796 804676

Ward: Oxford Road



Cllr Zulfqar Ahmed
07731 328011



Cllr Mike Smith
01296 421732

Ward: Southcourt



Cllr Mrs
Freda Roberts MBE JP
01296 424452

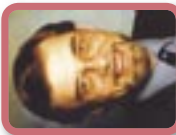


Cllr David Ralph
01296 581975

Ward: Oakfield



Cllr Graham Webster
01296 483416

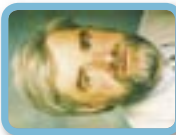


Cllr Steve Patrick
01296 424986

Ward: Bedgrove



Cllr Mrs Jenny Bloom
07729 011501



Cllr Alan Shenwell
01296 420672



Cllr Mrs Penni Thorne
01296 422232

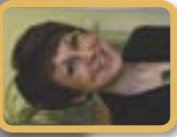


Cllr Mark Willis
01296 586109

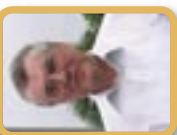
Ward: Mandeville & Elm Farm



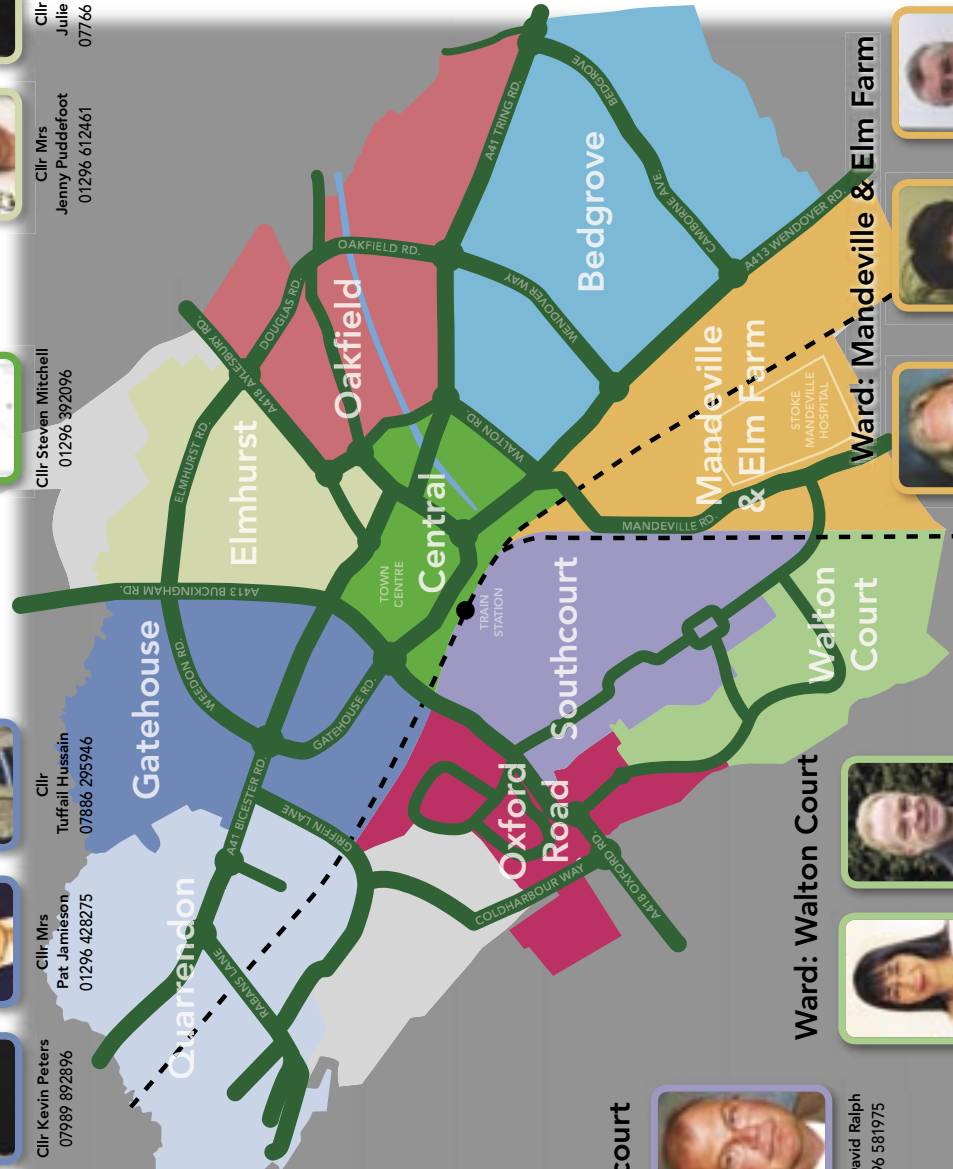
Cllr Mrs Denise Summers
01296 336731



Cllr Mrs Sue Chapple
01296 426814



Cllr Brian Roberts
01296 422881





Photos taken by Margaret Wagstaffe

Aylesbury Taskforce

Following the Lloyds Banking Group announcement at the end of last year that a number of operations will be transferred away from their Aylesbury offices from mid 2010 through to the end of 2011, the South East England Development Agency (SEEDA) established an Aylesbury Taskforce to coordinate support available in the area to job seekers.

Working in partnership with Lloyds Banking Group and Equitable Life, the Taskforce members are:

South East England Development Agency (SEEDA), Jobcentre Plus, Skills Funding Agency (previously the Learning and Skills Council), Aylesbury Vale District Council, Aylesbury Vale Advantage, Aylesbury Town Council, Buckinghamshire County Council, Bucks Economic and Learning Partnership, Government Office South East and Business Link.

The Taskforce is actively seeking opportunities to help affected staff find work. This could include help with skills to secure new employment and advice on career changes and on self-employment. The Taskforce is also exploring opportunities to support continued economic growth in Aylesbury, including assistance for local businesses and securing new inward investment into the area.

The Taskforce's recent work includes:

- Jobcentre Plus staff on site at Lloyds Banking Group Aylesbury offering one-to-one advice and helping employees to access rapid response funding.

- Supporting the launch of a colleague support programme providing on-site support, information, advice and training to help employees plan for the future. The support package brings together a wide range of services to support those facing redundancy including: re-training opportunities; skills analysis help; guidance on starting a business or self employment; advice on pensions and state benefits, as well as opportunities for working with the voluntary sector locally.

If you are unemployed, or at risk of being made redundant, and would like to find out more about local support then call Jobcentre Plus on **0845 604 3719**.

Similarly, if your business is likely to be impacted because of other company redundancies in the area then call Business Link advisers about potential support available on 0845 600 9 006 or visit: www.businesslink.gov.uk/southeast



Resource centre. Photo courtesy of HBOS



Fancy a cooking class in Aylesbury with a Michelin-starred Chef? Well now it is as easy as popping down to Aylesbury College!

Toby Hill, multi-award winning Chef, is Aylesbury College's Commercial Manager for Catering & Hospitality. He has had a very successful commercial career to date, with many accolades to his name and his restaurants. Amongst his awards, Toby ran 3 restaurants winning a Michelin star in each. He was the youngest chef ever to achieve a Michelin star; the youngest chef ever to achieve 4 AA Rosettes, and was Chef/Patron of two Gastro-Pubs, both voted Michelin Pubs of the Year.

Now, this talented gentleman is offering his services to you. If the thought of cooking scares you then 'Cooking for Beginners' is for you! Rest assured that no previous experience is necessary.

What about throwing together a fabulous three-course dinner party? The 'Dazzling Dinner Parties' tutorials will teach you the art of quick, effective entertaining. You will make two starters, two main courses and two desserts. Some cooking experience advised.

Feel you want an advanced course? Then the Toby Hill Michelin Masterclass is the one for you! Receive some one-to-one time with Toby as well as valuable tips and a portfolio of recipes to take away.

'Canapés For Any Occasion', 'Italian Cookery', 'Fish and Shellfish', 'Mediterranean Gastronomy', 'One for the Girls' (cooked by the Boys), 'Cake Decorating and Pastillage', 'Desserts and Patisserie' or 'Which Wine?' are all courses to look out for.

Most of the courses include lunch and are for varied experience levels. Costs start from £35 for beginners right up to the Masterclass at £125.

For more information contact cookery@aylesbury.ac.uk or call 01296 780286 or check out their website: www.aylesbury.ac.uk



Have fun and stay healthy at your local community swimming pool

Swimming remains one of the best forms of exercise for all ages and helps you to maintain a healthy lifestyle, as well as being an enjoyable activity.

We are now halfway through the Central Government's two year initiative to provide free casual swimming for the over sixties. With more than 11,000 free swims already enjoyed, there are still many more of the 28,000 60+ residents in Aylesbury Vale still able to take the plunge.

To claim your first 60+ free swim at either the Aqua Vale in Aylesbury or Swan Pool in Buckingham simply bring proof of your identity and age to either swimming pool, and you will be issued with a free swim card which can be used at either site to allow free entry every time you swim. As children under 5 years can also swim free at both swimming pools why not make swimming a fun family activity.

If you are a non-swimmer or out of practice, then come along to one of our adult swimming lessons to improve your confidence and ability. Various daytime and evening sessions are available and are suitable for the complete beginner to the more advanced swimmer.

New at the Aqua Vale in partnership with Reactivate Bucks; to reward you for your hard work we are introducing an adult lesson, 12 swim session loyalty card. Learn to swim, get fit and collect prizes* along the way! Please visit www.reactivatebucks.org for information.

For more information on swimming contact:
Aqua Vale (0845 2671197) www.aquavale.com
Swan Pool (0845 2671196) www.swanpool.org

*All rewards and prizes are subject to availability

St Mary the Virgin, Aylesbury

In the 6th century, on the site of an ancient iron-age fort at the highest point in Aylesbury, Saxon Christians built a tiny chapel. It is probable that the site had been a place of worship for aeons before, and it continued to be used by Saxons, Danes, and later by Normans, until about 1250. At that date a new, more imposing construction was raised, encompassing the original chapel and expanding to accommodate the growing population of the area.

St Mary's has not always been the loved and well maintained place it is now. It endured severe vandalism during the Civil War; all pre-17th century artefacts and stained glass windows being destroyed. Later, during the nineteenth and early twentieth centuries, the building fell into severe disrepair, and at one point was so dilapidated that the South Transept could be used only as a store for parish lumber. (This included three fire engines and a large hut used to shelter the Vicar when he conducted funerals in inclement weather). Elections were held on the premises, and given the proximity of the workhouse and the general unruly nature of those early polls, the place must occasionally have been quite riotous.

Although its earliest origins are lost in the mists of time, today St Mary's Church is, more than ever, at the heart of the community. Whilst strongly upholding its tradition of Anglican worship, the Church is also a centre of non-denominational gatherings. Throughout the week St Mary's plays host to a range of groups, and members of any faith (or none) are warmly received. Volunteers for a variety of free activities make sure that the Church is always busy, and welcoming to people of every persuasion.



St Mary's accommodates SPACE, a body which provides a place for people who are experiencing relationship difficulties of any kind to be quiet and think, and to discuss issues with experienced counsellors. Other groups afford gentle exercise for those wanting it, fun for mums and toddlers, choral training and singing for the musical, bell-ringing for the enthusiastic and a refuge for those who just seek tranquillity and perhaps someone to befriend.

Christmas sees a magnificent free traditional turkey dinner with all the trimmings for the elderly and those living alone. The Thursday lunchtime classical music concerts (small entrance fee, organised by the Friends of St Mary's) are of the highest professional standard and often feature internationally acclaimed virtuosos. St Mary's Bloomers create lovely flower displays. The graveyard is tended by volunteers who gather several times a year to keep it in good condition.

The Refectory offers high quality, nutritious food at very economical prices. In the summer tables are spread on the grassy lawns of the churchyard, beneath ancient yews, offering shade or sunshine with a delicious lunch. Tea, coffee, cakes and snacks are served all day. Open Monday to Friday, the Refectory is manned by both able-bodied and disabled volunteers and offers a quiet oasis in the heart of Town. Whatever your belief, so far as Reverend Shane is concerned, if you'd like to come, he'd love to see you.

Margaret Wagstaffe

Visit: www.aylesburychurches.org for more information or contact Reverend Shane on 01296 437641

Southcourt – A Brief History

“What is our task? To make Britain a fit country for heroes to live in” so declaimed David Lloyd George (Earl Lloyd-George of Dwyfor) 1863-1945 in his speech at Wolverhampton, November 23 1918, quoted in The Times, November 25 1918.*

In the aftermath of the First World War the Council wanted to take up the challenge of building homes fit for heroes. The site chosen was Prebendal Farm, which was owned by the Church Commissioners. The land had also been part of the Aylesbury Race Course in the nineteenth century. Hence a number of public houses in the area that had or still have names associated with horse racing. The ‘Horse and Jockey’, and the now sadly closed ‘Steeple Chase’ are a reminder of racing days long ago.

The first sod for Southcourt was dug by the Duke of York in November 1922, and York Place was so named in his honour. The houses were built to the standards of the day for local families. The layout owed much to the Garden City movement and there was extensive planting of trees and front garden hedgerows, all of which were donated by the Rothschild Estate at Waddesdon. In 1926 Ceely Road School was opened for the estate. By the time of the Second World War Prebendal Avenue, Penn Road, Eaton Road, Hampden Road, Paterson Road, Ceely Road, More Avenue, Nightingale Road, Lee Road, and Oak, Elm, and Beech Greens had been constructed. Many of these roads were named after prominent local people or those with an association with Aylesbury, such as John Hampden and Florence Nightingale.

In the 1930s central government proposed the planned expansion of certain towns and Aylesbury was designated as an Expanded Town, for London overspill.

Building came to a halt during the war. When the war was over work began again. Churchill Avenue was named in honour of the wartime leader, and Thrasher Road for Alderman J G Thrasher, the then Mayor. Two further schools were built: Mandeville Secondary and Oak Green Infants. A number of blocks of flats were constructed at this time; in particular, Lee Road and Hampden Gardens. Until 1967 the estate was served by its own railway station, (run by GWR) ‘South Aylesbury Halt’: a shelter and a wooden platform, situated on what is now the pedestrian crossing from Southcourt to Stoke Road.



Community in Southcourt - Over the years a great community has grown up in Southcourt. Pictured here is a residents’ bulb-planting initiative, and the fruits of similar exercises in previous years are shown below.

In the 1960s Harold Wilson’s government decided to reduce the traffic flow through the town by building a bypass along Thame Road. The scheme was shelved but not before a huge sloping earthen embankment had been built on Thame Road. The bank, which is still there, has proved useful for sliding down on a snow sledge in winter and in summer on tin trays or sheets of cardboard. Notwithstanding the failure of the bypass, more houses were built in the 70s.

Heavy rains in 1970 saw the houses on Streamside Walk flooded. A rubbish-clogged gully, running underneath Churchill Avenue, contributed to the creation of a huge brown lake which covered much of the green. In the Great Storm of 1987 a number of the mature trees were felled by gales.

Kevin Peters

**(The Oxford Dictionary of Modern Quotations by Tony Augarde)*



Penn Road, Battersby Mews. Photo by K. Turner



Free Fire Safety Checks

Free safety checks to help reduce the risk of a fire or other emergency in your home are available from Buckinghamshire Fire & Rescue Service.

Free smoke alarms are fitted where required, and firefighters will also help you find out more about other useful local services if you are interested. The checks take about 30 minutes each, depending on the size of the house, and are usually carried out by firefighters. The householder needs to be present to answer a few questions.

To book one of these free checks, ring 01296 744477 or email: cs@bucksfire.gov.uk

Community safety manager Terry Ridgley said: *"When fires break out, smoke alarms provide a vital early warning sign. If the fire happens at night, they are often your only warning."*

Here are Terry's top tips to ensure you and your family stay safe from fire:

- Fit and maintain a smoke alarm. You should have one on each level of your home and test it weekly. The ideal position is on the ceiling, in the middle of a room, or in the hallway and landing. Test it weekly.
- Plan your escape route: Make sure you and your family know the quickest way out in the event of fire. Consider an alternative route in case your usual one is blocked.
- In the event of a fire, get out, stay out and call 999: Don't delay for valuables, and don't investigate or try to tackle the fire. Use a mobile, a neighbour's phone or a phone box to call 999. If someone needs to be rescued wait safely outside for the firefighters who have the equipment and training to do it. Never go back in.
- Check on others. When you visit relatives or friends, look out for safety hazards in the home. Offer to help test their alarm and plan escape routes together.
- Keep internal doors shut – this will slow down the spread of fire.



FOUR KEY SAFETY MESSAGES:

Fit smoke alarms; Test them every week;
Plan an escape route; Get out, stay out and call 999.

Nightsafe Events

Following an annual update of the Community Safety Partnership plan, Aylesbury Vale District Council, the Police and partner agencies will be heading out after dark to deliver a night time economy campaign. Whilst Aylesbury has relatively low crime levels it is still important to address issues surrounding alcohol use and its effects on behaviour and personal safety.

One of the main parts of the campaign will be the delivery of 'Nightsafe' events in Aylesbury town centre, between 9.00pm and midnight with the Council, Police and agency staff offering advice on alcohol and drug use, personal safety, sexual health and getting home safely.

All workers will be prominently dressed in high visibility jackets and will be handing out information packs, bottled water and lollies, which are proven to reduce the effects of alcohol. Events in Aylesbury will be taking place on:

Saturdays 3rd July, 4th September, 6th November and 18th December

It is thought that the high visibility initiative, including additional police presence will help to reduce town centre anti-social behaviour and alcohol related issues, making Aylesbury an even safer place to live and visit.

Contact us

If you would like any further information on anything in this magazine, or if you would like to contribute to the next issue, please contact: Margaret Wagstaffe, at Aylesbury Town Council, Town Hall, 5 Church Street, Aylesbury, Bucks. HP20 2QP T: 01296 425678 email: m.wagstaffe@aylesburytowncouncil.gov.uk

Acknowledgement - I would like to thank the Members and Staff of Aylesbury Town Council for their help in the production of this magazine.

Margaret Wagstaffe
Senior Officer

Celebrating Aylesbury's History

**FREE
EXHIBITION**



Anglo-Saxon Walton in Aylesbury around 600 AD. Photo supplied by County Archaeology Service

HUMAN: half a million years of life in Bucks – on now until 11 July 2010.

Bucks County Museum has a brilliant track record when it comes to making history come alive. This is especially true in respect of the children of Aylesbury. Every week hordes of infants and juniors arrive at the gates, shrill with excitement and agog to see the latest interactive exhibition. The experience currently available, half a million years of life in Bucks, is one of the best yet.

This major exhibition at the Museum explores the archaeology and history of Bucks from the Ice Age to the Tudors.

On display is the very best of the Museum's collections alongside loans from the British Museum – some never before shown in the county.

Discover the people who lived here during the past half a million years through the objects they left behind. See tools shaped by early humans, bones of mammoths and woolly rhinos, stunning Celtic

jewellery, exotic Roman glassware, Saxon gold and medieval silver. This fascinating journey through time brings you face to face with the people from the past.

The Human exhibition is open Monday to Saturday and Bank Holidays 10.00am – 5.00pm, Sundays 2.00pm – 5.00pm. Free admission.

An exciting programme of events linked to the Human exhibition is also being run, including lunchtime talks, special twilight lectures and performances and Saturday Study Days. On **Saturday 26 June**, the museum and garden will host Making the Past, a free living history event with re-enactors and makers showing how to knap flints and make bronze tools, alongside chain mail armour makers, weavers and lace makers.

Please contact the museum on 01296 331441 for further details or visit www.bucksc.gov.uk/museum



Young Archaeologists' Club

Aylesbury Young Archaeologists' Club

Aylesbury YAC is a branch of the UK wide Young Archaeologists' Club, part of the Council for British Archaeology. YAC aims to involve people aged 8 to 16 years in archaeology, local history and heritage by:

- Creating fun ways to investigate the past
- Encouraging a greater understanding of archaeology
- Developing awareness of local and national heritage

Founded in 2007, the Aylesbury club meets on the second Saturday morning of each month at the Centre for Buckinghamshire Studies in Aylesbury, and now has over 20 members. This year's theme is "The Roman Empire" and each 2 hour session involves a range of fun activities on such topics as Roman villas, everyday life in Roman times, ritual and religion and the Roman army. Some meetings are led by specialists in the field of archaeology; at our Roman army session we had a re-enactor from the prestigious Ermine Street Guard, who came fully dressed and equipped as a legionary soldier.

In 2008, Aylesbury YAC was given the chance to take part in an excavation at Boarstall Tower as part of National Archaeology Week. Boarstall Tower dates back to 1312 and the remains of the old Tudor manor house on the site lie beneath the Tower lawn. The club was given its own trench to excavate, and the youngsters quickly picked up the basics of trowelling and bucket emptying! Finds came thick and fast, favourites including some pieces of local glazed pottery dating from the medieval period, peg tiles used on the roof of the house, some interesting metalwork such as nails and a door latch, and a beautiful copper alloy aiglet (the metal pointed end of a shoe or boot lace).

In 2009 our theme for the year was British prehistory with the highlight being a full day prehistoric camp. Activities during the day included crafts such as clay pottery moulding, chalk carving and wire jewellery making. Shelters were constructed out of natural materials and we cooked a range of prehistoric style foods including flat breads, lamb on sticks, fresh



Aylesbury YAC excavating at Boarstall Tower

salmon, nettle soup and whole eggs baked over an open fire. The day finished with story-telling around our campfire.

This year's summer event will be a day spent at Piddington Roman villa in Northamptonshire, at which the young people will have the opportunity to excavate, as well as visiting the site's museum and taking part in some Roman activities such as writing and cooking.

The Aylesbury club has gone from strength to strength since its inception, and has a dedicated and enthusiastic team of voluntary helpers and leaders. It is great to see the young people enjoying the sessions, whilst learning about the past, and there are undoubtedly several budding archaeologists in our midst. Time Team here we come!

Sue Fox
Branch Leader, Aylesbury YAC



Aylesbury YAC's 2009 Prehistoric Camp

Aylesbury Town Grants - March 2010

Grange Youth Centre received £2,000 funding for a martial arts project for youngsters on the Prebendal Farm Estate to teach them self discipline, fitness and health. The grant would also be used to fund trips.

Aylesbury Old Town Residents were awarded £600 towards the restoration of a memorial to John Smart, the gardener of John Wilkes MP for Aylesbury in the 18th century. The tablet is placed on the wall between the churchyard and Prebendal House. It includes a quote from Virgil – 'even the laurels and myrtle will weep at his passing'.

Thames Valley Police Neighbourhood Policing Team received £1,250 towards funding a Duke of Edinburgh project. The object would be to provide a project that encouraged team work and self worth skills.

£2,000 was awarded to **Ryder Cheshire Volunteers** towards the recruitment, support and retention of volunteers involved in the Ryder Cheshire 'Leisure and Learning' project which benefits people living in Aylesbury who have physical disabilities.

CHAT needed an updated and modern website to promote the charity in a more effective way and to raise money which would be put towards the funding of additional respite care nurses for children with special needs. £1,762.50 was awarded.

Aces Wheelchair Basketball Club received a grant of £500 to assist the Elite Super League Squad to travel to Rome to compete in the European Champions League in April 2010.

Aylesbury Youth Action staged a Distinctive Urban Roots Event which was held in Kingsbury Square in April. They received a grant for £2,000 to pay for hiring of equipment including a marquee, seating, music, cooking facilities and a video diary room.

£2,000 was awarded to **IAS Cricket Club** for league fees, equipment and hire of the Sports Hall. The club was set up in 2003 and supports Aylesbury Town Cricket Club by using and paying for the use of their facilities.

Aylesbury Retail Against Crime received additional funding of £1,000 for the cost of administration for the scheme to prevent retail losses, reduce anti-social behaviour and to reduce the opportunity for offenders to commit crime.

£2,000 was granted to **Aylesbury & District Citizens Advice Bureau** towards the cost of employing an employment specialist and the provision of additional volunteers and their training costs.

Pat Phillips

If you belong to a non-profit-making organisation which provides a service for a section of the community, you may qualify for a grant.

Please contact Mrs Pat Phillips at Aylesbury Town Council, Town Hall, 5 Church Street, Aylesbury, Bucks. HP20 2QP Telephone: 01296 425678 or email: p.phillips@aylesburytowncouncil.gov.uk for application forms or further information.

Presentation cheques for December Grants



Cllr Mrs Pat Jamieson presenting the cheque to Indian Culture Society. Photo taken by Keith Turner



Cllr Mrs Pat Jamieson presenting the cheque to Mrs Hall from National Association of Widows. Photo taken by Roger King

Mayoral Engagements

100th Birthday Celebration

On 14 January, Cllr Mrs Ranjula Takodra MBE, Mayor of Aylesbury, was invited to the Healthy Living Centre on Walton Court to celebrate the 100th birthday of Mrs Marjorie Ward. Marjorie is a resident of Thistle Court, and visits the Healthy Living Centre regularly for her lunch. Carers and friends organised a street-party style cream tea for Marjorie's family and friends.

Launch of the Bucks Family Information Service

The Mayor launched the Bucks Family Information Service in Friars Square on 23 January. Finalists of the Young People of the Year for Buckinghamshire officially opened the event.

Member of the British Empire

Our cover picture shows Cllr Mrs Ranjula Takodra, being awarded her MBE by Her Majesty the Queen on 26 February 2010. The MBE was announced in the New Year Honours list and was given for Services to the Community.

Ranjula is delighted to receive this recognition of her many long years of public service. Members and Staff of Aylesbury Town Council would like to offer their congratulations on this richly deserved award.

Leadership Talk to Turnfurlong Junior School

The Mayor visited Turnfurlong Juniors to talk to Year 5 students about her role as Mayor of Aylesbury. The children had prepared questions, such as how did she become Mayor, what her average day was like, and which interesting people she had met as Mayor.

Sunshine Rally, Lunch for Pensioners

Cllr Takodra was invited to this newly launched special lunch club for the elderly. She enjoyed an afternoon of 1940's entertainment. This included a 'Vera Lynn Sing-a-long' and 1940's dancing.



*The Mayor's Charity Dinner and Dance
Photo courtesy of Maurice Cousins*

The Mayor's Charity Dinner & Dance

This annual event was held in the Hardings Restaurant at Aylesbury College on 27 February 2010, in aid of the Mayor's chosen charity, The Cancer Care & Haematology Unit at Stoke Mandeville Hospital. Ticket sales, an auction and a prize draw raised approximately £2000. Entertainment included Ricky Ashiani & 3B (Bollywood Dancers), Dennis Victory (Street Dancer) the Lindy Swing Diggers and Errol Fenton (Blues Singer).

To finish the evening the audience danced enthusiastically to the Casino Royale Steel Band.

Islah International Women's Day

Ranjula joined the Islah International Women's Day celebrations at the Elmhurst Community Centre on 20 March. The day's events included food tasting from different countries, henna painting, face painting, facials and hand massages.

Deputy Mayor Cllr Graham Webster attended the St. Mary's C of E School's 10th Anniversary celebration at St. Mary's School.

The Mayor's Charity Dinner and Dance. Photo courtesy of Maurice Cousins





What's On June - September 2010

June

3	Lunchtime Classical Music	Family	£2	12.45pm	St Mary's Church
3	World Cup Frenzy	Family	FREE	11.00am - 3.00pm	Kingsbury
4	Shappi Khorsandi	Adult	£7/£8	8.00pm	Queens Park Centre
5	Open Mic Night		£3/£5	8.00pm	Queens Park Centre
6	Music in Aylesbury	Family	FREE	11.30am - 2.00pm	Kingsbury or Market Square
10	Lunchtime Classical Music	Family	£2	12.45pm	St Mary's Church
10	Aylesbury College Open Day	Adults	FREE		Aylesbury College
11	The Grapevine Blue Band	Adult	£8/£9	8.00pm	Queens Park Centre
12	Bucks Wildlife Day	Family	FREE	11.00am - 4.00pm	County Museum
12	Ian English & The Boodlum Band	Adult	£8/£10	8.00pm	Queens Park Centre
13	Music in Aylesbury	Family	FREE	11.30am - 2.00pm	Kingsbury or Market Square
17	Lunchtime Classical Music	Family	£2	12.45pm	St Mary's Church
18	Music of the Night	Adult	£8/£10	8.00pm	Queens Park Centre
19	The Essence of Love	Adult	£8/£10	8.00pm	Queens Park Centre
20	Romans in Aylesbury	Family	FREE	11.00am - 4.00pm	Market Square
22	Farmers' Market	Adult	FREE	9.00am - 2.00pm	Market Square
23	Francesca Barritt, violin, Susie Summers, piano	Adult	£10	7.30pm	St Mary's Church
24	Lunchtime Classical Music	Family	£2	12.45pm	St Mary's Church
25	Film Night at the Limelight	Adult			Queens Park Centre
26	Philip Clouts Quartet	Adult	£8/£10	8.00pm	Queens Park Centre
27	Music in Aylesbury	Family	FREE	11.30am - 2.00pm	Kingsbury or Market Square
27	Open Gardens	Family	£4	2.00pm - 6.00pm	See page 9 of magazine

July

1	Lunchtime Classical Music	Family	£2	12.45pm	St Mary's Church
2 & 3	Turning Point and I Survived the 70s	Adult	£6.50/£8	8.00pm	Queens Park Centre
3-18	Aylesbury Festival	Family	FREE		Town Centre
3	Roald Dahl Festival	Family	FREE	11.00am	Town Centre
4	Music in Aylesbury	Family	FREE	11.30am - 2.00pm	Kingsbury or Market Square
8	Lunchtime Classical Music	Family	£2	12.45pm	St Mary's Church
9	Celebration of Stevie Ray Vaughan by The Robin Bibi Band	Adult	£8.50/£9.50	8.00pm	Queens Park Centre
10	Amber Willow	Adult	£8/£10	8.00pm	Queens Park Centre
11	Aylesbury on Sea	Family	FREE	10.00am - 4.00pm	Kingsbury
15	Lunchtime Classical Music	Family	£2	12.45pm	St Mary's Church
16	Bellydancing Showcase	Adult		8.00pm	Queens Park Centre
17-18	Aylesbury Music Festival	Family	FREE	11.00am - 4.00pm	Kingsbury
22	Lunchtime Classical Music	Family	£2	12.45pm	St Mary's Church
22	Inflatable Fun	Family	FREE	11.00am - 3.00pm	Market Square
23-25	Olympic Fever London 2012	Family	FREE		
23	Film Night at the Limelight				Queens Park Centre
24	Holograms Exhibition (until 31 October)	Family	FREE		County Museum
24	Summer Music Festival	Family	FREE		
24	Aylesbury Street Festival	Family	FREE	11.30am - 2.00pm	Market Square
25	Music in Aylesbury	Family	FREE	11.30am - 2.00pm	Kingsbury or Market Square
27	Farmers' Market	Adult	FREE	9.00am - 2.00pm	Market Square
29	Lunchtime Classical Music	Family	£2	12.45pm	St Mary's Church
29	Magic Show	Family	FREE	11.00am - 3.00pm	Market Square
31	Archaeology Day	Family	FREE	11.00am - 4.00pm	County Museum
31	Aylesbury Street Festival	Family	FREE	11.30am - 2.00pm	Market Square



What's On June - September 2010

August

1	Music in Aylesbury	Family	FREE	11.30am - 2.00pm	Kingsbury or Market Square
4	Play Day in the Park	Family	FREE	11.00am - 3.00pm	Vale Park
5	Loaded	Family	FREE	12.00pm - 6.00pm	Market Square and Kingsbury
7	Aylesbury Street Festival	Family	FREE	11.30am - 2.00pm	Market Square
8	Music in Aylesbury	Family	FREE	11.30am - 2.00pm	Kingsbury or Market Square
12	Teddy Bears Picnic	Family	FREE	11.00am - 3.00pm	Market Square
14	Aylesbury Street Festival	Family	FREE	11.30am - 2.00pm	Market Square
15	Music in Aylesbury	Family	FREE	11.30am - 2.00pm	Kingsbury or Market Square
19	Hogwarts Experience	Family	FREE	11.00am - 3.00pm	Kingsbury
21	Aylesbury Street Festival	Family	FREE	11.30am - 2.00pm	Market Square
22	Music in Aylesbury	Family	FREE	11.30am - 2.00pm	Kingsbury or Market Square
24	Farmers' Market	Adult	FREE	9.00am - 2.00pm	Market Square
26	Animal Petting	Family	FREE	11.00am - 3.00pm	Kingsbury
28	Aylesbury Street Festival	Family	FREE	11.30am - 2.00pm	Market Square
29	Hobble on the Cobbles	Family	FREE	1.00pm - 7.00pm	Market Square

September

4-5	Parklife	Family	FREE		Vale Park
4	Proms in the Park	Adult	FREE	7.30pm	Vale Park
5	Music in Aylesbury	Family	FREE	11.30am - 2.00pm	Kingsbury or Market Square
12	Charter Day	Family	FREE	11.00am - 4.00pm	Market Square
18	Cadet Parade	Adult	FREE	11.00am - 4.00pm	Market Square
24	Macmillan Coffee Morning	Adult	FREE	9.30am - 2.00pm	Hale Leys Shopping Centre
25	Love your Market	Family	FREE	11.00am - 3.00pm	Market Square
25	Autumn Fashion Show	Adult	FREE	11.00am - 4.00pm	Friars Square
28	Farmers' Market	Adult	FREE	9.00am - 2.00pm	Market Square



Aylesbury Festival

St Mary's Church Open Day

Saturday 10th July 2010

11.00am - 4.00pm

Musicians including Lumina (as shown in photo) and Sue Rothstein, harpist.
Flower arranging.

Refectory open 10.30am - 4.30pm
Teas, coffee, cakes

For event details: Bucks County Museum - 01296 331441 The King's Head - 01296 381501 St Mary's Church - 01296 437641
Civic Centre - 01296 486009 www.aylesburycivic.org Limelight Theatre Queens Park Art Centre - 01296 424332 www.qpc.org
Also see: www.aylesburyvibe.info and www.aylesburytowncouncil.gov.uk

HOBBLE ON THE COBBLES (AYLESBURY) CELEBRATES 5th ANNIVERSARY

Summer 2010 is already shaping up to be another bumper year of local live-music excitement, entertainment and festivities in Aylesbury, with a series of different styled events from pub gigs to "Buckinghamshire's largest free all-day music festival"; Hobble on the Cobbles, which celebrates its 5th anniversary on Bank Holiday Sunday 29 August from 1.00pm.

'The summer' actually kicks off this May Bank Holiday, with **The Last Local Rock Show**, an indoor festival, which will be held at the Aylesbury Civic Centre on Friday 28 May featuring seven local bands from around Bucks.

Headlined by **The Original Sinners**, winners of Absolute Radio's 'One Last Dream' Competition last year, a local band who released their debut single into the UK charts and who also opened up at the Hard Rock Calling Festival in front of 40,000 people last summer.

Other local bands performing at this event are: **Lost Minute, Subrosa5, Alight, Kiss Kiss Bang Bang, Tramp Etiquette** and **TR8R**, who are all coming together to say 'farewell' to the famous Civic Centre, (which has seen the likes of *David Bowie, U2, Genesis, Queen, Black Sabbath*, to name but a few bands who have graced the stage over the years), as the building will be demolished in early June to make way for the fabulous new Aylesbury Waterside Theatre.



Tickets for The Last Local Rock Show are available in advance at £10.00, and on the door at £12.50, from the Civic Centre Box Office:

01296 486009. See: AylesburyCivic.co.uk

Also visit: AylesburyShowcase.com for all the latest news and information.

Aylesbury Festival 2010

The *free* Aylesbury Festival will take place over the weekend 17 & 18 July in Kingsbury, in Aylesbury Town Centre, featuring around 15 local bands, and headlined by **Groov8**, and **Old Country Union** on the Saturday, and **Lost Minute**, and **Stone Cold Diva** on the Sunday.

Visit: AylesburyFestival.com for all the latest news and information, and the featured bands.



Hobble on the Cobbles 2010

As Hobble on the Cobbles will be celebrating its very special fifth anniversary in 2010, 'Aylesbury Showcase', the local promoters and the organisation team behind this popular festival wanted to give one of the hardest-working local bands around at the moment an opportunity to headline this event, which in essence is what HOTC is all about – supporting the local bands!

Therefore, they are extremely proud and pleased to announce **The Red Bullets** will headline Aylesbury's 'Hobble on the Cobbles' festival this summer, on **Sunday 29 August**. For full details visit: AylesburyShowcase.com



FREE local music magazine **The New Roxette** will also be available throughout the summer. For full details visit: theNewRoxette.com

Aylesbury Town Council
Town Hall, 5 Church Street, Aylesbury, Bucks. HP20 2QP
Tel: **01296 425678** Fax: **01296 426134**
Email: info@aylesburytowncouncil.gov.uk
www.aylesburytowncouncil.gov.uk

Designed and printed by
bluepepperdesigns
creative design and print

8 Temple Square, Aylesbury, Bucks. HP20 2QH
Telephone: **01296 424699** Website: www.bpdesigns.co.uk