

AYLESBURY TOWN matters

Aylesbury Town Council Magazine
Issue **Eighteen** September 2010



Serving the people of Aylesbury



Inside this issue...

- Rio's Story
- Roald Dahl Festival
- Acton Tindal
- Aylesbury in Bloom



'Take pride in Aylesbury Town'
www.aylesburytowncouncil.gov.uk



Welcome Note

Welcome to the 18th edition of Aylesbury Town Matters. Among other things, this issue celebrates the fantastic Roald Dahl Festival and the Aylesbury-on-Sea event. Both were hugely enjoyable not only for those participating but also for those of us that just watched.

These events, and many others, would not happen if a vast amount of effort was not expended by staff of the local authorities, parents, children and many other organisations. So I would like to take this opportunity to thank one and all of you who have lent your time and energy. It makes a great difference to the quality of life for residents and visitors to the town.

Also in this issue is an article on Acton Tindal, a benefactor to the town and one-time Lord of the Manor of Aylesbury and Bierton. In each issue we seek to include an article that 'teases' out the history of the town.

We always welcome suggestions from residents as to the contents of the magazine so if you have some ideas please do not hesitate to contact the Town Clerk, Keith Turner.

Cllr Steve Patrick
Leader of the Council

Contents:

	Page
Welcome Note	2
Ghouls & Villains	2
Rio's Story	3
What's Gone and What's On	4
Acton Tindal Remembered	6
Local News	8
Cycling in Aylesbury	9
Community News	10
Ward Map	12
Three Councils in Aylesbury	13
Aylesbury Duck at The Broad Leys	14
Aylesbury's Full of Life Event	14
Aylesbury Songs	15
Quarrendon Leas Update	16
Aylesbury in Bloom	17
Owl Keeps an Eye on Electricity	18
Cemetery Recycling	18
The Civic Centre	19
Aylesbury Town Grants	20
New Mayor	21
New Deputy Mayor	21
What's On September - December	22
Charter Day & Tudor Fayre	24



Make your Halloween extra Spooky with the Ghouls and Villains Tour!

Be prepared for some ghostly surprises as you are guided around some of the most haunted parts of the town of Aylesbury. Join us during the evenings of 30th and 31st October for an out-of-this world experience.

Tickets will soon be available from the
Tourist Information Centre.

**For further details please see the Aylesbury Town Council
website: www.aylesburytowncouncil.gov.uk**

Contact Details:

Aylesbury Town Council
Town Hall, 5 Church Street, Aylesbury,
Buckinghamshire HP20 2QP
Tel: 01296 425678 Fax: 01296 426134
E: info@aylesburytowncouncil.gov.uk
www.aylesburytowncouncil.gov.uk

Opening hours:
Monday - Thursday 8.45 am - 5.15 pm
Friday 8.45 am - 4.45 pm

*Front cover image: Aylesbury Town
Council's outdoor team taking part in
the Tour de Vale cycle event.
Photo by Keith Turner.*

**Aylesbury Town Council is a member
of English Historic Towns Forum and
twinned with Bourg-en-Bresse.**



Mixed Sources

Product group from well-managed
forests, and other controlled sources
www.fsc.org Cert no. TT-COC-002702
© 1996 Forest Stewardship Council

Rio's Story

There is a footballer in Aylesbury who could tell some interesting stories – if only he could talk. Affectionately named, 'Rio' is a topiary footballer who was grown to represent Aylesbury's support for England in the World Cup finals. However, before the football competition even started Rio had been stolen.

Rio had been positioned in pride of place in the centre of an Exchange Street roundabout flower bed, which had been carefully grown to resemble the England Flag. Planted during a spring afternoon, only a handful of passers-by were able to see the topiary statue before it was stolen at approximately quarter past eleven the same evening by two males, who were caught on CCTV dragging Rio away.

An anxious appeal for information ensued, which led to considerable press coverage on local TV, radio and the printed press. Thankfully, this directly led to Rio's discovery by an Aylesbury resident, who had been unaware of the theft before her grandchild pointed out that the 'green man' at the back of the house looked like the one which had been on TV.

After being recovered Rio went into 'rehab' at Crown Leys allotments, where he was carefully and lovingly tended to by members of Aylesbury Town Council's outdoor team. Sadly, during the theft his leg had been broken, meaning the once healthy topiary had begun to die.

Exchange Street roundabout now has a 'sub' in the form of 'Rooney' (shown above), a slightly shorter topiary footballer who continues to fly the flag for England, even though their World Cup dreams are now over. Perhaps there is some bad luck in the name Rio?



The cyclist celebrates Aylesbury's status as a Cycle Town



Photos courtesy of Mike Evans

What's Gone and What's On...



Fun for the Summer in Aylesbury

This summer the town has been packed full of exciting free events. Summer Sunday Music (May to September) brought us acts such as 'Abbalicious' and the 'Blues Blah Brothers' every weekend, the Music Festival on the 17th -18th July produced some great beats, and Hobble on the Cobbles (29th August) was as popular as ever.

Music isn't all that's been on offer. Events such as World Cup Football Frenzy in Kingsbury, Romans Fun Day in Market Square and two Historical Exhibitions, 'Human' and 'Romans' at the Bucks County Museum have brought activity to the town through June. July began with the spectacular Roald Dahl Festival and continued with the tremendously popular Aylesbury-on-Sea event in Kingsbury.

August brought even more fun activities. The 'Teddy Bears Picnic' came to Market Square on the 12th, and on the 19th Kingsbury turned magic for the day for the 'Hogwarts Experience'. Aylesbury Street Festival continued throughout June, July and August, bringing a huge variety of music events to the town for all to enjoy.

September brings Parklife on the 4th and 5th, including Proms in the Park (4th), so get your Union Jacks ready! Charter Day and Tudor Fayre take place on the 12th, where you may catch a glimpse of King Henry VIII. In October the spooky Ghouls and Villains (30th and 31st) happens, after which the Christmas Lights Switch-on (18th November), a Victorian Christmas (12th December) and Carolfest (16th December) will get you right into the Christmas Spirit.

Don't forget you can always find out more details of free events in the town by visiting: www.aylesburytowncouncil.gov.uk and clicking on 'What's on'.

Hilary Trahair



Photos courtesy of Russ Naylor, Poundon Productions and Hilary Trahair

Roald Dahl Festival

This year the Roald Dahl Festival (3rd July) was blessed with sunshine and warmth as the parade made its way through the town. The theme for 2010 was Fantastic Mr Fox, and there certainly were some fantastic displays on offer, all created by local schools over many months leading up to the day. Even the Mayor got involved in the parade and showed some great dance moves!



Photos courtesy of Russ Naylor

Aylesbury-on-Sea

On the 11th July the seaside came to Aylesbury for the annual 'Aylesbury-on-Sea' event. Visitors flocked to Kingsbury on the day to enjoy magical entertainment from the fabulous Mr. Alexander, had a go at Hook-an-Aylesbury Duck, the coconut shy or hoop-la, took a ride on the Smiley Train or took time out in one of the many deckchairs provided to enjoy a little light jazz music.

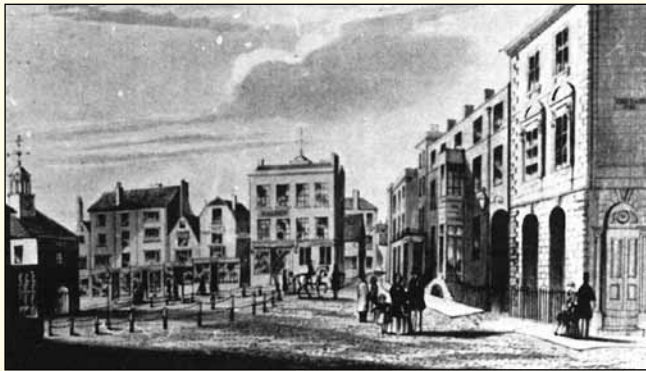


Photos courtesy of Russ Naylor and Hilary Trahair

Acton Tindal Remembered

Acton Tindal was born in 1811. His father was Thomas Tindal, who lived in Aylesbury and was the Duke of Buckingham and Chandos's Steward and the Clerk of the Peace for Buckinghamshire. Thomas's lineage includes a Lord Chief Justice, a Solicitor General, a Admiral and a Governor of the Bank of England.

In 1848 the Duke's desire for power and influence was his undoing: he became overextended and creditors finally sued him for bankruptcy in 1848. This combination of the Duke's bankruptcy and agricultural depression had a devastating effect on the rural economy and Buckingham Town's economy was reduced by a quarter over the next 25 years.



c1850 looking towards Market Square with the George Hotel and the Old Bank (now Lloyds) on the right

Into this turmoil stepped Acton Tindal, who had replaced his father as Buckingham's Steward and had access to finances and the certain knowledge of where a bargain could be purchased in the various fire-sale auctions of the estate. One auction, held at the George Hotel (which used to stand next door to Lloyds Bank) included 700 acres and the Lordship of the Manor which had both been purchased by the Duke of Buckingham in 1801 from Sir John Pakington. Today it is a meaningless title, something that can be purchased off the internet, but the historic right of a Lord of the Manor was to collect rents from the running of a market. He could also choose who would be the vicar of St Mary's Church and who would serve as a parish constable.

If you were the Lord of the Manor you needed a Manor House and in 1852 work began on a new Manor House on Berton Road for the Tindal family. From the marriage to Henrietta Euphemina Harrison two sons and a daughter had come at that time. This stone and brick building, sitting in 20 acres was described as a "commodious mansion" which was "on an eminence in a proverbially healthy locality [and] commands a charming view of the Chiltern Hills".



The Manor House, Berton Road

He also bought the Old County Arms Public House (now the Prison Officers' Social Club) which was adjacent to his land and moved the "license" to premises in Cambridge Street.

Acton Tindal appears to have had great wealth, enough to commission a painted glass window in St Mary's Church in 1862 and the erection of the Market Square clock in 1876.

Henrietta Tindal is worthy of note in her own right as she was a notable poet, so much so that her books were read by Queen Victoria herself. Her books have not really made the transition to the modern age though as they tied the mundane female life then to Royal events.

Mrs Tindal died in 1879 and her husband's death followed shortly on the 20th October 1880 aged 69. The Manor House was leased out to Charles Threlfall and then auctioned off with its attendant land at the George Hotel on 25th May 1882. By 1926 it was in the hands of a W.H. Champness who sold it to the County Committee for the Care of the Mental Defective for £6,250. In 1972 it was demolished to make way for a new hospital complex.



Acton Tindal, his wife and a number of his family are buried in Aylesbury Cemetery in a small compound (shown left). Also buried there is a Mary Beardsley described as a "friend and servant". Over the years the compound has suffered some wear and tear. One of the headstones has fallen over and the intricate metal fence that used to surround it has come adrift in some places. Aylesbury Town Council is committed

to restoring the compound in honour of Acton Tindal and the part he played in the history of Aylesbury.

What became of the Lordship of the Manor? The Town Council believe it was bought by a gentleman who lives in High Wycombe. But we wouldn't mind having it back!

Clerk of the Peace

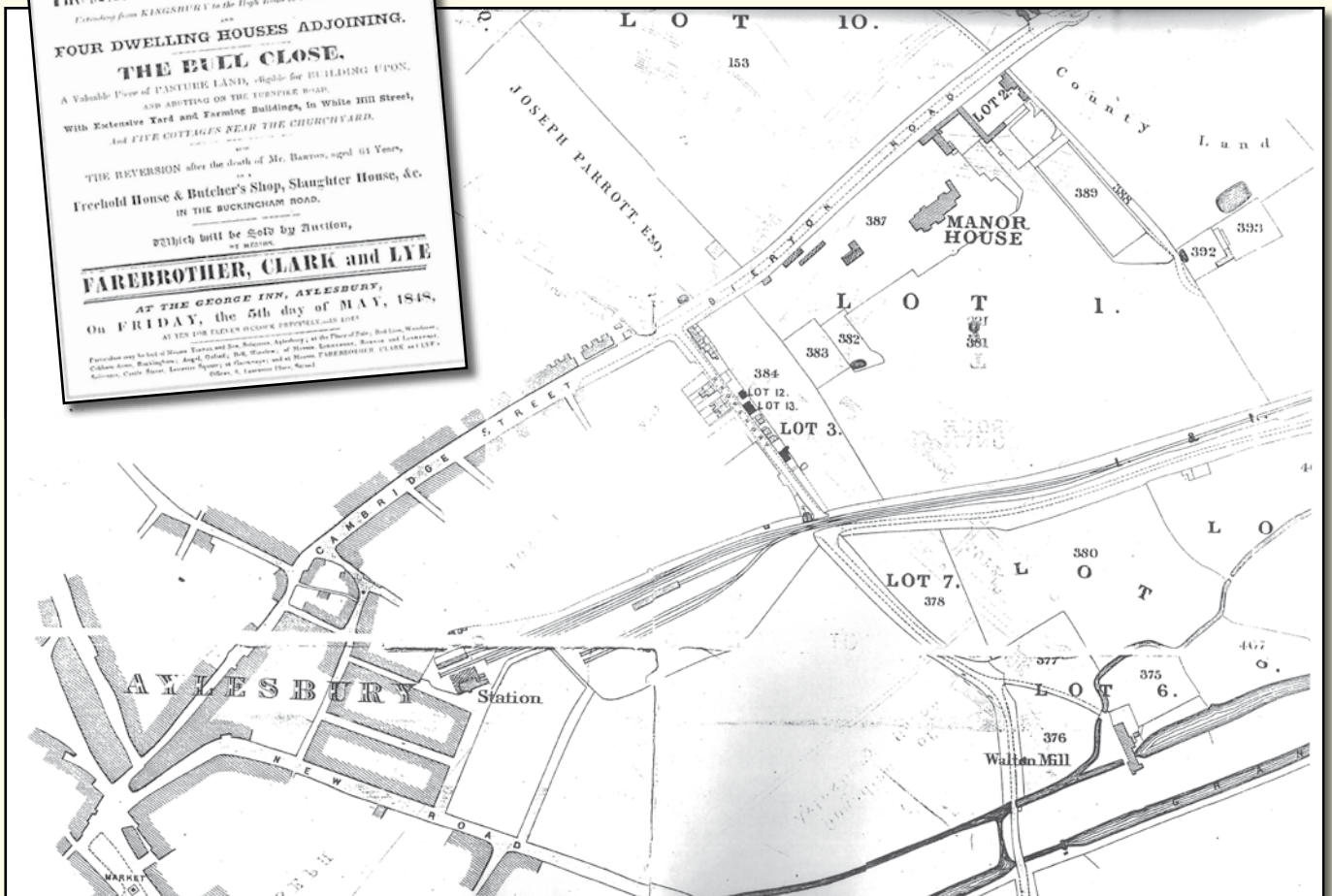
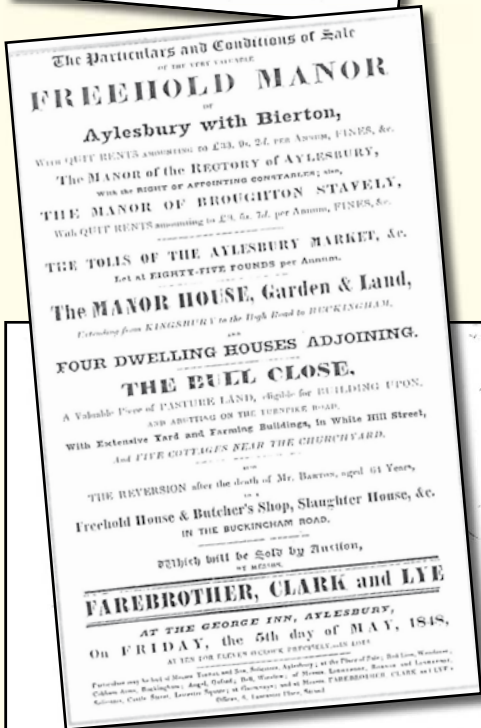


Crown Court, Market Square

Clerks of the Peace are former local government and judicial officials in England and Wales. They held the office of Clerk to the County Council and in many cases were also clerks to the justices and quarter sessions. In their local government role they were the chief executive officers of the county council and in their judicial role

they were responsible for maintaining the records of quarter sessions and advising the justices on the law relating to cases before them.

Clerks of the Peace were normally solicitors by profession. Under the Courts Act of 1971 quarter sessions were replaced by Crown Courts and the judicial functions of the Clerks of the Peace were transferred to the newly created Clerks of the Crown Court. Clerks of the Peace retained their local government function, but following the local government reorganisation in 1974 their role was in many cases either superseded by or subsumed in the post of Chief Executive to the Council.



Local News



Secret gardens are still secret

For over 20 years residents of Aylesbury Old Town have opened up their gardens to friends and acquaintances on a Sunday afternoon, and this year was no exception. On a beautiful day in June, 250 - 300 adults and children had the opportunity to admire these secret gardens which are usually tucked away out of sight.

15 beautiful gardens were there to be admired and envied with the odd duck, rabbit and railway and the newly restored 250 year-old John Smart Memorial in St Mary's churchyard.

What better way to spend a sunny afternoon, stopping off occasionally for a cup of tea and a cake or some homemade lemonade?

Aylesbury Tourist Information Centre...

more than just information for tourists

Aylesbury Tourist Information Centre's friendly staff offer vital information for visitors to the area but they also provide a number of useful services for local people including:

- National Express coach travel tickets
- Tickets for local events
- Information about things to do locally
- Theatre tokens
- Information about days out, places to visit and places to stay across the UK
- Information about West End shows
- Local transport timetables

Call into Aylesbury Tourist Information Centre, The King's Head, King's Head Passage, off Market Square, Aylesbury, HP20 2RW Tel: 01296 330559 Email: tic@aylesburyvaledc.gov.uk

Aylesbury Sea Cadets - Full Steam Ahead



It has been a busy time at Aylesbury Sea Cadets recently; we have purchased a second hand minibus to take cadets away on courses, competitions and fun activities and, with a number of new entrants joining our existing 'crew', the Unit is going from strength to strength. Aylesbury Sea Cadets is part of the national Sea Cadet Corps. Our aim is to encourage confidence and leadership skills in our Cadets in an environment where they can have fun and adventure. We are open to boys and girls aged 12 to 18 (13 to 18 for Marine Cadets) and we meet Mondays and Wednesdays from 7.15pm to 9.30pm at Sivatech in Gatehouse Close, Aylesbury. Any young people interested are welcome to come along at these times for more information.



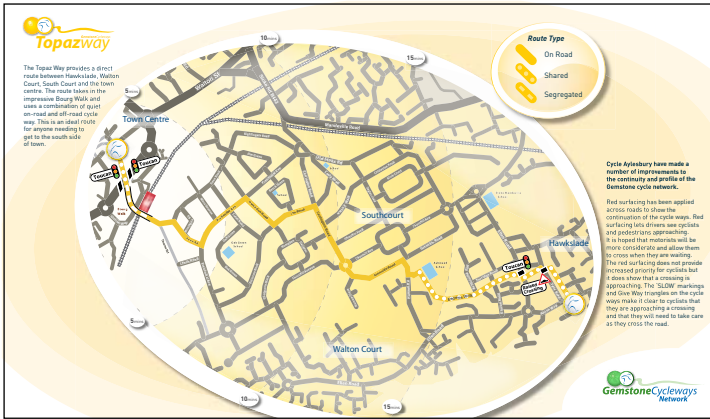
Allotment Open Day



Members of the Aylesbury Garden Society, Crown Leys allotment wardens and members of the Aylesbury Town Council outdoors

team volunteered their services to open the Crown Leys allotments on the 10th July 2010.

Robert Taft, Aylesbury Town Council's outdoor supervisor was pleased to announce that the open day raised in excess of £100 for the Air Ambulance charity. He praised the volunteers for giving their time for such a worthy cause and wishes to thank the members of the public who supported them on the day.



The new Topaz Way and Aylesbury Town Council's Outdoor Team taking part in the Tour de Vale event

Cycling in Aylesbury

Cycling enthusiasts rejoice! Aylesbury is the place to be when it comes to all things bike. Since 2005 when Aylesbury became one of the Government's cycling towns, more and more residents are leaving the car in the drive and hopping onto the saddle. Buckingham Bikes, a local independent cycling retailer, have had to take on extra staff to meet service and repair demands.

Cycling to work is increasingly popular. Cycle Aylesbury have recently unveiled the Topaz Way, connecting Hawkslade with the Town Centre and bringing our modern cycling network to nine dedicated routes. This is complemented by 250 secure parking stands.

Not one to miss a trick, Aylesbury Town Council has also embraced the cycle to work scheme. This is a government-backed initiative which allows employees to get a bike and cycling equipment at a significant discount to retail prices. Interest in the scheme is high and it looks set to be popular amongst the employees.

A number of the staff who already cycle to work decided to take part in this year's Tour de Vale. The team who tested their metal against the tough course, comprised of Chris Barlow, Danny Drew, Dave Daily, Steve Self, Aaron Poulton and Tony Sharp.

The Mayor of Aylesbury, Cllr Graham Webster, congratulated the team on successfully navigating the route. He commented, "The town should be proud of the efforts its staff put in. Not only do they work tirelessly for the people of Aylesbury all year round, but they performed fantastically on the Tour de Vale despite the warm conditions. The success of this year's event proves how popular cycling is in Aylesbury. Their efforts also go to highlight the commitment the Town Council has made to cycling recently."

The event was organised by WheelPower, based at Stoke Mandeville Stadium, who are the national

charity for wheelchair sport in the UK. The charity was pleased with the 2010 turnout of approximately 1,200 people. Compared to 750 in 2009, this marks a significant increase. The Tour de Vale is the annual highlight of a number of cycling activities throughout the year, ranging from proficiency training to free mechanical checks.

If you want to join in on the fun, you don't need to look very far. Buckingham Bikes is an independent retailer near Kingsbury Square. A huge range of bikes and accessories are provided by diligent and friendly staff. Alternatively, Halfords offer the obvious consumer benefits of a nationally established business. Both offer mechanical checks to make sure your equipment is safe and serviceable.

Daniel Parslow



Community News



PARENTS AND CHILDREN TOGETHER

www.pactcharity.org

Have YOU ever thought about FOSTERING?

There is a recognised shortage of 10,000 Foster Carers in the UK. PACT (Parents And Children Together), founded 1911, is also known as the Oxford Diocesan Council for Social Work and includes a registered charity working to improve children's life chances.

You don't have to be married or to have children already to be a Foster Carer although you do need to have experience of caring for children. Most of the children who need fostering are known as 'hard to place' children, and are usually 8+ years of age. Did you know you get paid a Fostering Allowance of £335.70 a week to be a Foster Carer which is tax free and won't affect any other benefits?

Fostering is a hard but very rewarding job. If you want to find out more then contact PACT on **0800 7311845**, email: fostering@pactcharity.org or visit www.pactcharity.org



Partners in Aylesbury join forces to promote personal safety and sensible drinking during the World Cup.

Professionals from Aylesbury Town Council and Aylesbury Vale Community Safety Partnership were in Kingsbury for the England v Algeria match, offering free personal safety advice and support. This included outreach workers from the Drug and Alcohol Action Team, Police, Antisocial Behaviour professionals and Community Safety Officers from AVDC.

As well as addressing alcohol consumption they encouraged people:

- To consider their personal safety
- To ensure they are using safe and licensed transport
- To know their limits

They also highlighted the negative consequences of drinking too much.


Aylesbury Vale is a safe place and is committed to reducing crime and disorder and with help from our local communities we can continue to reduce crime and improve the feeling of safety.



Learning Together and Living in Harmony is an interfaith group which encourages people from the different faith communities in the Aylesbury area to learn about one another and promote peace and harmony. We aim to encourage stable and tolerant communities. Anyone who supports these purposes is welcome at our meetings and may apply to become a member of the group. You may be of any faith or of no faith.

This year we are planning a Peace and Friendship walk in Aylesbury in September, and in November we will be marking Interfaith Week by working in partnership with Bucks Forum of Faith to hold a Faith Café event, where questions of faith and community will be openly discussed.

If you want to get involved in any of these events, please contact us at our new website where more information will appear in due course: www.aylesburyinterfaith.org


humanity in motion
Locally and Globally
our influence is felt

Rotary in Aylesbury

Why not join the Team?

What is Rotary?
Pay us a visit and find out

ROTARY CLUB OF AYLESBURY HUNDREDS

We will be delighted to meet you and your partner

The Club was established in 1990. We are a group of local people who want to put a little back into the community in which we live and to help internationally. Importantly, we want to have fun whilst we are doing it.

We organise practical assistance and raise funds for local and international needs and projects.

Some of the charities helped recently are:
Aquabox – Shelterbox – Stroke Awareness Association – MIND – Aylesbury Hospice – Macmillan Cancer Support – Anne’s Children’s Hospice, Belarus

Our meetings are informal and we have an active programme of social events.

Meetings weekly on Mondays at 7.30pm

INTERESTED?
Contact Jon Mullins on...
Tel: 01296 431806 email: mullinsjon@hotmail.com web: www.aylesbury100rotary.org

What's In Aylesbury

- Local social networking for businesses, councils and community.
- Interactive capability, so the community can receive free information on local businesses, events, as well as where and how to save money.
- **FREE** classified advert section and additional dedicated sections for cars, property and jobs.
- **FREE** promotion for all local sports clubs/ clubs, charities, events in Aylesbury and surrounding areas.

So... get connected and get involved with Aylesbury, you will be surprised what you find!

www.whatsinaylesbury.co.uk – your local network!

Walton Pond



The recent renovation of Walton Pond by Aylesbury Town Council is now complete. The pond is in full bloom, and despite the summer drought the main body of the pond is full of water for the resident ducks and the seven ducklings living there.

The final stage of the renovation process is to ensure that the pond can never get into a poor state again. The Town Council does not own the pond, but we would like it to become a community pond, so we are forming a Friends of Walton Pond group.

This group will look after the pond and encourage community involvement in the area. The first meeting of Friends of Walton Pond will take place at Queens Park Centre on 9th September at 7.30pm. **We would love to see as many residents interested in the pond and the wildlife of the town there, as possible.**

Cllr Mark Willis
Aylesbury Town Council, Chair of the Environment Committee

Contact us

If you would like any further information on anything in this magazine, or if you would like to contribute to the next issue, please contact: Keith Turner, Aylesbury Town Council, Town Hall, 5 Church Street, Aylesbury, Bucks. HP20 2QP
T: 01296 425678 email: k.turner@aylesburytowncouncil.gov.uk Acknowledgement - I would like to thank the Members and Staff of Aylesbury Town Council for their help in the production of this magazine.

Keith Turner, Town Clerk

Ward: Elmhurst



Cllr
Mohammed Amjad
07956 803458



Cllr Mrs
Julie Ward
07756 545236



Cllr Mrs
Jenny Puddefoot
01296 612461

Ward: Central



Cllr Steven Mitchell
01296 392096

Ward: Gatehouse



Cllr Kevin Peters
07989 892896



Cllr Mrs
Pat Jamieson
01296 428275

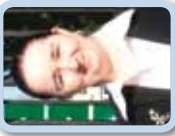


Cllr
Tuffail Hussain
07886 295946

Ward: Quarrendon



Cllr Ray Ghent
01296 489327



Cllr Miss
Noreen O'Sullivan
07796 804676

Ward: Oxford Road



Cllr Zulfqar Ahmed
07731 328011



Cllr Mike Smith
01296 421732

Ward: Southcourt



Cllr Mrs
Freda Roberts MBE JP
01296 424452



Cllr David Ralph
01296 581975

Ward: Oakfield



Cllr Graham Webster
01296 483416



Cllr Steve Patrick
01296 424986

Ward: Bedgrove



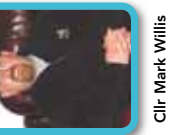
Cllr Mrs Jenny Bloom
07729 011501



Cllr Alan Shenwell
01296 420672



Cllr Mrs Penni Thorne
01296 422232



Cllr Mark Willis
01296 586109



Cllr Mrs Denise Summers
01296 336731



Cllr Mrs Sue Chapple
01296 426814



Cllr Mrs Sue Chapple
01296 426814



Cllr Brian Roberts
01296 422881



Did you know there are three Councils based in Aylesbury?



**AYLESBURY
TOWN COUNCIL**

Aylesbury Town Council is the council closest to the residents in the parish of Aylesbury. The Town Council is here to be a voice for the residents by representing their views on issues affecting them. Aylesbury Town Council maintains responsibility for the management of the seven local allotment sites, the Tring Road Cemetery and the Office of the Mayor. The Town Council supports the local economy by putting on a programme of events throughout the year to encourage community participation and for the entertainment of residents and visitors.

**For more information phone: 01296 425 678
or visit: www.aylesburytowncouncil.gov.uk**

Aylesbury Vale District Council deals with issues covering the whole of Aylesbury Vale and has a very regulatory remit. Aylesbury Vale District Council is responsible for the collection of the Council Tax and Business Rates as well as household waste disposal, local planning and building regulations and public car parks. Aylesbury Vale District Council deal with licensing (public houses, taxis and so on) and inspect and regulate commercial food premises.

**For more information phone: 01296 585 858
or visit: www.aylesburyvaledc.gov.uk**



Bucks County Council is the top tier of local government and provides services on a county-wide basis. Bucks County Council deal with issues such as highways, emergency planning, education, adult learning, social services, waste disposal (not household waste), libraries, the County Museum, trading standards, registrar of births, deaths and marriages, as well as the local/historical studies centre.

**For more information phone: 01296 395 000
or visit: www.buckscc.gov.uk**



The Broad Leys delighted with Aylesbury Duck recognition

"For two years we have been telling everyone that Aylesbury is the most superior duck out there – it's great to see more and more people enjoying this wonderful bird!" said Helen Wood, Proprietor at The Broad Leys Bar & Restaurant in Aylesbury.

Having recently hosted Aylesbury Duck eaters such as Michael Portillo and John Otway (who is keen to do a show at The Broad Leys), Helen is pleased to see Aylesbury Duck making its mark on the national culinary map. A dish featuring the famous duck was recently the winner for Michelin starred Chef Tom Kerridge in the BBC series *The Great British Menu*.

"We've been serving Aylesbury Duck here for two years. It is consistently our biggest selling dish, currently served as a duo with the leg confit and the breast pan fried with Parmentier potatoes, chargrilled butternut squash, broad beans and raspberry jus. We've had literally hundreds of people visit to try the dish with guests coming from as far away as Cardiff!"

Helen stated that she is very proud of the fact that The Broad Leys is the sole Aylesbury restaurant to have the town's famous dish on the menu. "The Aylesbury Duck is a rare breed and it's a privilege to be able to serve this local speciality to the people of our town."

The Broad Leys were recent finalists at *The Publican Food & Drink Awards 2009* and are the only Aylesbury restaurant in over 50 years to serve Aylesbury Duck on the menu.

www.thebroadleys.co.uk

Aylesbury's Full of Life: A free showcase for older peoples' contribution

Friday 1st October 2010
10.30am – 2.00pm
at The Oculus, Gatehouse Road

A multi-agency group is arranging a free to attend day to celebrate all that older people do to contribute to our society and to break down some of the stereotypes about older people.

The main focus of the day will be a talent show, including performance artists, exhibitions of art and talks from achievers. Younger people will also be able to talk to and learn from older people, and perhaps make future friendships. Other information to help older people get and stay active will also be on offer. There'll even be a free lunch!



We want you to get involved! If you are an older person with a talent to share, willing to showcase art that you have painted, made or photographed, can talk about an unusual gift or experience or are willing to share your experiences with younger people, get in touch!

Call Claire Paine on 01296 585826
email: cpaine@aylesburyvaledc.gov.uk
or Lynne Maddocks on 01296 585364
email: lmaddocks@aylesburyvaledc.gov.uk

More details are also available on the
Aylesbury Town Council website
www.aylesburytowncouncil.gov.uk

Do you know any songs about Aylesbury?

Our research came up with just three. From the Bawdy British Folk Songs book compiled by Tony McCarthy came The Aylesbury Girl. Somewhat bizarrely from a secondhand book entitled Llawlyfr Moliant came a song just called Aylesbury, attributed to Dr. Greene and dated 1750. For some reason the words underneath are in Welsh and if there are any Welsh speakers in Aylesbury we wouldn't mind knowing what it's all about. The third song is one which was published in our second issue of Aylesbury Town Matters which manages to include all the pubs in Aylesbury available at the time. To see the song in full visit our website: www.aylesburytowncouncil.gov.uk

The White Hart said to the Ram one day
 Whilst having a chat with the Bear
 "Who pulled the Bell at the Foresters Arms
 and made the Green Man swear?"
 "I think it was the Red Lion" he said.
 As he gazed at the Rising Sun
 The Saracens and the Eagle knew
 The Black Horse was the guilty one
 The Horses and Jockeys came trotting by
 With the Ploughs and Harrows behind
 The Windmill waved a Dark Lantern round
 The New Inn and the Grapes to find
 The Falcon and the Greyhound
 Clung onto the Bricklayers Arms...

Rhif 5. AYLESBURY. M. B. DR. GREENE, 1750.



15 O Aros gyda ni.

- 1 O AROS gyda ni,
 Ein lŵr a'n Ceidwad on;
 Os cawn dy wedd, nid ofnwn fraw—
 O aros gyda ni.
- 2 Y nos sydd yn nesân,
 Ac oriau'r t'wyllwch du;
 I Ti un wedd yw dydd a nos—
 O aros gyda ni.
- 3 Chwencychu'r 'ym yn fawr
 Dy bresenoldeb Di,
 I'n cynorthwyo dan bob croes—
 O aros gyda ni.
- 4 Pan ddaw'n gelynyon cas
 I'n herbyn megys llu,
 Dyogel fyddwn dan dy nawdd—
 O aros gyda ni.
- 5 Rho in' bob awr o'n hoos
 Ddyddanwch oddi fry;
 Yn anguw se yn nydd y farn—
 O aros gyda ni.

- 2 Mewn ofnau r wyf, a braw,
 Bob llaw gelynyon sydd;
 O anwyl Iesu, saf o'm rhan,
 A thyn y gwan yn rhydd.
- 3 Boed fy nghymdeithas fyth
 Fry gyda'm nefol Dad,
 A chyda'r Mab, tra bwy'n y byd,
 Ac yn y nefol wlad.
- 4 Sefydlog fyddo'm bryd,
 A'm cariad arno E!l,
 Nes cael cymundeb perffaith iawn
 O lewn i furiau'r nef. GOMER.

17 Dyoddefaint Crist.

- 1 A I am fy meiau i
 Dyoddefodd Iesu mawr,
 Pan llaeth yn ngrym ei gariad E!l
 O entrych nef i lawr?
- 2 Cyflawnai'r gyfraith bur,
 Cyflawnder gafodd iawn,
 A'r dyled mawr, er cynaint oedd
 A dalodd E!l yn llawn.
- 3 Dyoddefodd anguw loes
 Yn ufudd ar y bryn,
 A'i waed a ylch yr Ethiop du
 Yn lân fel eira gwyn.
- 4 Bu'n anguw i'n hanguw ni
 Wrth farw ar y pren,
 A thrwy ei waed y dygir llu,
 Trwy anguw, i'r nefoedd wen. J. ELLAS

AN.

16 Gweddî am ymtoared.

- 1 I Iesu Brenin nef,
 F' Anwylyd a fy Nuw,
 Yn eithaf pell o dŷ fy Nhad,
 Mewn anial wlad 'rwy'n byw

(5)

THE AYLESBURY GIRL

As I was going to Ayles-bury, 'twas on a mar-ket
 There came a lit-tle Ayles-bury girl a -
 jog-ging on the way. Her bus-iness was to
 mar-ket with but-ter, cheese and whey. And we
 both jogged on to- geth-er, my boys, sing
 fol-the-lol idd-le-all-day. And we
 both jogged on to- geth-er, my boys, sing
 fol-the-lol idd-le-all-day.

The above appears to be three songs which use the same tune. Can anyone throw any light on this please?



Looking towards Aylesbury



Quarrendon Leas



Looking towards St Peters church ruins

Quarrendon Leas Update

Over the last two years great progress has been made by the Buckinghamshire Conservation Trust (BCT) in establishing Quarrendon Leas as an important national site and in making it accessible to local people.

The Buckinghamshire Conservation Trust was set up by Buckinghamshire County Council, with representatives from that body, Buckinghamshire Archaeological Society and Aylesbury Town Council. Its mission is to help conserve and enhance the County's historic and natural heritage, and promote public appreciation of this rich inheritance.

Quarrendon is a nationally outstanding example (as recognised by its status as a scheduled ancient monument) of an English village that was depopulated in the 16th century and of the subsequent development of a Tudor manor, gardens and wider landscape incorporating much of the site of the village and its chapel. Because the area has been maintained as grassland for over three centuries, the form of these features has been clearly preserved, and the preservation of below-ground remains can be expected to be good. The archaeological evidence is the primary reason for the site's designation as a scheduled ancient monument. There is potential for encouraging carefully planned programmes of archaeological research.

The site offers an exceptional opportunity for local people, and the wider public, to experience and appreciate the pattern of English rural life as it developed across the centuries. It illustrates the history of the Vale of Aylesbury from Anglo-Saxon times to the present-day, particularly the changeover from medieval peasant agriculture to enclosure for grazing land which occurred from Tudor times.

Despite its closeness to Aylesbury, Quarrendon Leas is an attractive and tranquil rural landscape. It comprises large areas of natural floodplain and bodies of water with a mixture of flood meadow, grassland, hedges and trees.

Work carried out by the BCT so far includes construction of a wheelchair friendly path across the whole site, archaeological monitoring and recording and tree works. The second phase of work will include repair works to the St Peter's church ruins and work on the Elizabethan moat. The aim of the work on the moat is to improve access and minimise existing hazards thus enabling volunteering work. Tops of surviving wall foundations of the old farm buildings will also be uncovered and interpretation panels installed. It is envisaged that the interior of the buildings might be laid out and displayed with pea shingle to infill the floor space.

Improved public access to the site will be possible once the first phase of the new Berryfields MDA link road is built.

Roger King

With thanks to Sandy Kidd, County Archaeologist

All photos by Roger King



Quarrendon Leas - St Peter's church ruins and new path

Aylesbury in Bloom

We were really impressed with the standard of entries in 2010. Here's a few of the entries from the Residents' (shown at the top) and Schools' sections.



We hope you are all preparing for next year's competition!



Alan Titchmarsh look out!

Evan Fearn, a 7 year-old Aylesbury resident, wowed Aylesbury in Bloom judges with his enthusiasm for vegetable gardening. With some help from his mum Evan has chosen, planted and carefully tended the vegetables, and is now reaping the fruits of his labours! The ever-growing vegetable garden, situated in a corner of his parents' Southcourt garden, contains a huge variety of vegetables including radishes, leeks, peas, lettuce, sweetcorn and potatoes.

Evan is so keen to grow he has even asked for a new greenhouse for his birthday.



New Recycling Facilities Installed in Cemetery

The immaculately kept Tring Road cemetery has recently installed recycling facilities to meet the needs of its visitors.

Aylesbury Town Council's outdoor team work tirelessly to keep the cemetery up to the high standards that the town has come to expect. Visitors to the cemetery were generating lots of plastics and some cans which were being thrown in with the general refuse. Noticing this and remembering the commitment of Aylesbury Town Council to environmental issues, a number of staff requested that measures be taken.

Under the management of Aylesbury Town Council, the Tring Road cemetery has gone from strength to strength. The utmost care is taken to provide the people of Aylesbury with a safe, secure and pleasant environment where loved ones can be laid to rest and happy memories reflected on.

The new facilities provide for up to 480 litres of plastic and metal recycling. This will reduce the dependence on land fill, help make Aylesbury a greener and more environmentally friendly place to live, as well as improving the already high condition of the Tring Road cemetery.

Outdoor supervisor, Robert Taft, had the following comments: "We're extremely pleased with the installation of recycling facilities. This will save our boys lots of work and means we can focus our efforts where they are needed most."

This improvement marks a successful collaboration between Aylesbury Town Council and Aylesbury Vale District Council. Daniel Parslow, Projects Officer at Aylesbury Town Council, said: "I would like to thank Martin Jarvis and his team at Aylesbury Vale District Council for all their help on this matter. Working together, we have identified a problem for the people of Aylesbury and successfully acted to solve it."



Recycling facilities at the Cemetery



Owl Keeps an Eye on ATC's Electricity

Saving electricity, minimising fuel bills and the all-important reduction of the carbon footprint have been made just that little bit easier with the installation of the Owl Wireless Electricity Monitor at Aylesbury Town Council. The small device takes only minutes to install and clips onto the main power line of the fuse box. A sensor reads fluctuations in the electromagnetic field and transmits this data wirelessly to the display unit. This processes the information to produce a real-time indication of electricity use.

The Owl will display net energy consumption, greenhouse gas emission and tariff zones amongst other helpful variables. It can even be programmed with your specific charges, so you can see exactly how much has been spent!

Aylesbury Town Council is already leading the way with green initiatives and activities. The Owl is just one such example. Between this and the digital readout from the solar panels installed on the roof of the Town Hall, the Town Council is building up a detailed picture of its energy use. This picture is invaluable when making targeted changes in activity to reduce electricity dependence.

With The Owl you can see in quantifiable terms the difference leaving a television and DVD on standby overnight makes, or boiling only the water you need for a cup of tea or coffee during a programme break.

The system is very easy to install, and offers an easy way to monitor electricity use and plan savings. Our version is just one of a range of products aimed at keeping electricity costs low. Other interesting products include a wireless USB analysis tool, a business pack, a remote control power socket and mini-display unit. Regardless of your home's individual needs, The Owl can help you out.

Head to www.theowl.com for further information.

Daniel Parslow

The Civic Centre

After thirty five long hard years of service to the town, in June the Civic Centre finally shut its doors to the public for the last time. The Civic was opened in 1975 and quickly established itself as the focal point for entertainment in Aylesbury. From election night drama as Aylesbury's important votes were counted, to fits of giggles produced from children's entertainers, the Civic functioned as the host to a broad range of social activities.

The Civic has long been associated with the renowned Friars club. Promoted by David Stopps, Friars' history spans over four decades of musical creativity, and the club wrote Aylesbury prominently into the musical history books. Initially Friars was marketed as a progressive rock club, and welcomed the musically aware through the doors. The first phase featured bands such as East of Eden and Free. By phase two, the interests of Cockney Rebel, Genesis and David Bowie had been attracted.

Come the 80s, Friars had established itself as the focal point for intelligent alternative music, with The Clash, The Human League and The Sisters of Mercy

all featuring. While Friars may have had an indie edge, it didn't lose sight of pop sensibility, and Queen and Blondie also headlined. Looking back though the line-ups, the younger generation of Aylesbury may find it hard to believe our quiet town was the host to such loud, energetic and iconic bands.

The long history of the Civic went under the hammer in late June. Amongst the array of stainless steel kitchen fittings, hard working audio gear and office equipment, a number of signed posters, chronicling the lineage of acts to pass through the doors, attracted attention. With over 850 lots, the auction offered a piece of the Civic's history for everyone.

Paul Weller and John Otway bade the Civic farewell on behalf of Friars and while the town is sad to see the Civic Centre go, the fond memories live on. The town's attention has now been shifted to the new Waterside Theatre which will pick up the torch. The theatre is set to open doors in October. For more on Friars visit www.aylesburyfriars.co.uk

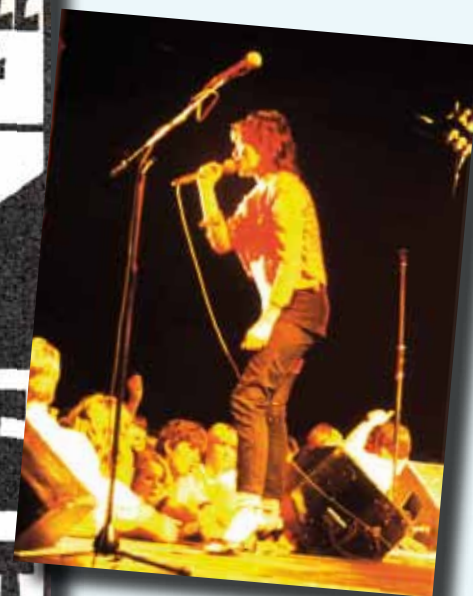
Daniel Parslow



The Civic Centre as seen from Judges Lodging



An example of Friars' iconic posters. Goth Rockers Bauhaus top the line-up



Queen of Punk, Siouxsie Sioux, addresses the audience at the Civic Centre

Aylesbury Town Grants

Bucks Army Cadet League was awarded £499 to assist with the purchase of equipment for indoor training at the TA Centre in Aylesbury.

Queens Park Arts Centre received £1,780 towards their programme of Indian performances and workshops.

Gap Youth Club was awarded £1,000 towards updating their equipment.

RainBow Totz received £1,000 for equipment for their toddler group.

Autumn Leaf Club were awarded £682.50 towards the cost of a theatre trip.

Retail Against Crime was awarded £2,000 to go towards providing stores with information about new 'crime trends' which have come to notice in the town.

SPACE was awarded £1,612 towards the cost of providing beneficial therapy for members with mental health issues.

Thursday Morning Club received £560 towards a cruise on the River Cam for their OAP members.

Youth for Christ were awarded £2,000 towards their free family fun day in Vale Park.

Southcourt and Walton Court Community Project was awarded £2,000 towards a new lunch club for the children involved.

Florence Nightingale Hospice were awarded £744.52 towards publicity/advertising for their Nightingale Gemstone Midnight fundraising walk (see below).



Cllr Mark Willis, Cllr Kevin Peters, Ollie Brewer, Cllr Ranjula Takodra and Cllr David Ralph

Sports Grants Awarded

Ollie Brewer – awarded £1,000

Ollie, 18, trains with the Maxwell Swimming Club at Aylesbury's Aqua Pool, and recently had great success at the County Swimming Championships. He will be starting at Loughborough University in September and plans to use his grant for accommodation and travel expenses at competitions.

Cameron Palumbo – awarded £1,000

Cameron, 17, has been playing golf since he was 8 and is currently studying for a National Diploma in Golf at Hartpury College. Last August he won the Junior Championships at Ellesborough Golf Club and now has a handicap of seven. Cameron will use his grant for coaching fees and clubs.

Sam Ridgeway – awarded £650

Sam, 17, is ranked 3rd best UK male under 20 for throwing the hammer and has now achieved a World Record. He is looking to take part in the 2014 Commonwealth Games, and it is the second year he has been awarded a Sports Grant from Aylesbury Town Council. He will use the grant for accommodation/travel expenses at competitions.

Nightingale Gemstone Midnight Walk

A star performance from the people of Aylesbury and surrounding areas! Over 500 ladies became stars for the night as they set out on their circular walk around Aylesbury for Florence Nightingale Hospice on Saturday 17th July – Aylesbury's first ever Midnight Walk.

The atmosphere was electric throughout the night with some ladies walking as individuals and others in teams, often remembering a friend or family member who has died. The message of thanks from the Florence Nightingale Hospice Charity Fundraising Team is clear "These ladies walked with us and £50,000 is currently pledged for their local hospice; together we really have made a difference".



The New Mayor

You can take the boy out of the country, but you can't take the country out of the boy. Therefore, I apologise if I ever revert to a rural dialogue. My young introduction to the great outdoors left me with a passion for our countryside and all that abounds in it – a passion I was able to put to further use when I joined the local scout movement.

For better or worse, the days have long gone since the Mayor could arrest those who disturbed the peace, regulate the size of a loaf of bread, or compel a person to go into service. While old fashioned authority has gone, it is with great pride and honour that I accepted the role as your Mayor, and in doing so follow others who have left their mark on this great town and community.

Aylesbury Town has changed significantly over the years. We need to move forward together. The office of the Mayor offers the chance to help and benefit others in and around our town, promoting all that is good about Aylesbury. That I promise.

I have had the privilege of working with young people, watching them reach heights they never thought possible. As such I nominated PACE (www.thepacecentre.org) as one of my charities. They provide help for physically disabled children who also strive to reach their goals. The Lymphoma Association (www.lymphoma.org.uk) is my second



Town Mayor, Cllr Graham Webster at the opening of Wetherspoon's in Market Square

charity. Lymphatic cancer is the most common cancer affecting the under 30s and the 6th most diagnosed in the UK. They support anyone affected: patient, family or carer.

Traditionally, the Mayor appoints cadets to assist in his duties, but because of my association with scouting, I have chosen five scouts for this honour. Luke Ackers, Ashley Tapping, Michaela Scott, Helena Rotherham and Lucy Parker will accompany me wherever possible. In 2011 they will be representing Aylesbury in the World Scout Jamboree in Sweden.

I greatly look forward to meeting and working with Aylesbury's community this year and I thank you for your support and acceptance.

Cllr Graham Webster

... and Deputy Mayor



Cllr Mrs Julie Ward

Aylesbury has been a vibrant thread of continuity throughout my life. Born in the Royal Bucks Hospital, I went to Elmhurst and the Floyd schools. I still have very strong links with the Elmhurst area – the ward I currently represent.

Young people are the future of Aylesbury, and I am particularly keen to see we provide for them. For the last nine years I've worked at the Grange School; first in the Special Educational Needs Department, but now as a Student Mentor. I work with a wide range of young people, motivating and supporting them to help get as much out of their school experience and their lives as possible. Like the community I serve through Aylesbury Town Council, this is very rewarding work.

As a local girl, I am acutely aware of the issues

which face our town. I remember the 'Target Years' with great fondness, when I worked for Target Life Assurance. During the 80s, they were one of the town's main employers. When HBOS, one of our current main employers, announced job cuts it really rang home.

Sensible local development is also an issue I have worked closely with local residents over. In the coming years Aylesbury will rapidly expand. We need to ensure that this growth provides for new families, developing Aylesbury into a successful modern town for future generations, but without loss of our unique heritage and character.

Aylesbury means so much to me. I have countless happy memories of my time growing up, going out, living and working in our town. As Deputy Mayor, I want to make sure that all parts of the community, this generation and the next, can share in similar memories.

Cllr Mrs Julie Ward



WHAT'S ON SEPTEMBER - DECEMBER 2010

SEPTEMBER

Romans Exhibition (until 26 September)	Family/Education	FREE	*see below	County Museum
2 Lunchtime Classical Music	Concert	£3	12.45pm	St Mary's Church
4 Lunchtime Classical Music	Concert	£3	12.45pm	St Mary's Church
4-5 Parklife	Family	FREE	10.00am - 5.00pm	Vale Park
4 Proms in the Park	Concert	FREE	7.30pm	Vale Park
4 Family Fun Day	Family	FREE	12.00pm - 4.00pm	Vale Park
5 Aylesbury Street Festival	Music/Family	FREE	11.30am - 2.00pm	Kingsbury
5 Super Sport & Chill Out Sunday	Family	FREE	12.00pm - 4.00pm	Vale Park
6-30 Jonathan Page Play Centre After School Club			3.15pm - 6.00pm	Jonathan Page Play Centre
10 Anita Wardell	Jazz Concert	£8/£10	8.00pm	Queens Park Centre
11 Rajeev Sharma & Friends	Bollywood Music	£12/£15	8.00pm	Queens Park Centre
12 Charter Day - Tudor Fayre	Family/Education	FREE	11.00am - 4.00pm	Market Square
15 Classical Music Matinee	Concert	£3	12.45pm - 2.45pm	St Mary's Church
16 Lunchtime Classical Music	Concert	£3	12.45pm	St Mary's Church
17 The Larry Miller Band	Blues/Rock Concert	£9/£10	8.00pm	Queens Park Centre
18 The Perfect Wife Roadshow	Comedy	£8/£10	8.00pm	Queens Park Centre
19 Cadet Parade	Parade	FREE	11.00am - 4.00pm	Market Square
19 Tattoo	Military	FREE	6.30pm - 8.30pm	Kingsbury
19 Quiz Night with Fish & Chip Supper	Charity	£10	7.30pm	Queens Park Centre
23 Lunchtime Classical Music	Concert	£3	12.45pm	St Mary's Church
24 Macmillan Coffee Morning	Charity	FREE	9.30am - 2.00pm	Hale Leys Shopping Centre
24 Film Night at the Limelight	Film		8.00pm	Queens Park Centre
25 Love your Market	Shopping/Family	FREE	11.00am - 3.00pm	Market Square
25 Autumn Fashion Show	Fashion/Shopping	FREE	11.00am - 3.00pm	Friars Square Shopping Centre
26 Battle of Britain Parade	Military	FREE	2.30pm	Town Centre
27 British Heart Foundation Big Donation Charity Event (until 10 Oct)	Event (until 10 Oct)		All day	Friars Square Shopping Centre
28 Farmers' Market	Shopping	FREE	9.00am - 2.00pm	Market Square
29 Classical Evening Concert	Concert	£10	7.30pm	St Mary's Church
30 Lunchtime Classical Music	Concert	£3	12.45pm	St Mary's Church

OCTOBER

Holograms show (until 31 Oct)		FREE	*see below	County Museum
Paintings of Hartwell House Gardens		FREE	*see below	County Museum
1 Chloe Hall & Trio	Folk Concert	£8/£10	8.00pm	Queens Park Centre
2 Autumn Festival	Family	FREE	11.00am - 4.00pm	County Museum
2 Open Mic Night	Music/Comedy	£3/£5	8.00pm	Queens Park Centre
3 Sunday Special Experimental Monoprint	Art		10.00am - 4.00pm	Queens Park Centre
7 Lunchtime Classical Music	Concert	£3	12.45pm	St Mary's Church
8 Friends of the Blues	Blues Concert	£6.50/£8	8.00pm	Queens Park Centre
9 Wear it Pink Day	Charity	FREE	11.00am - 3.00pm	High Street and Friars Square
9 JUMP - 20th Anniversary Tour	Rock Concert	£8/£10	8.00pm	Queens Park Centre
12-16 NBT Swan Lake	Dance			Waterside Theatre
14 Lunchtime Classical Music	Concert	£3	12.45pm	St Mary's Church
15 Carvin Jones Band (USA)	Rock/Blues Concert	£12/£10	8.00pm	Queens Park Centre
16 Catherine AD plus support Jack Harris	Concert	£8/£10	8.00pm	Queens Park Centre
16 Professional Recital by Galliard Ensemble	Music	£5/£8	7.30pm	Aylesbury Music Centre
16 Book this Space: altered books (until 27 Feb 2011) - Exhibition		FREE	*see below	County Museum
18-30 Evita	Musical			Waterside Theatre
21 Lunchtime Classical Music	Concert	£3	12.45pm	St Mary's Church
22-23 Damages	Play	£6/£8	8.00pm	Queens Park Centre
23 The Big Draw	Family	FREE	11.00am - 3.00pm	County Museum
26 Special Half Term Farmers' Market and Activities - Family		FREE	9.00am - 2.00pm	Market Square
26-28 Monstrous Messy Art Week	Children's Art	£2.50	*see below	County Museum
27 Classical Evening Concert	Concert	£10	7.30pm	St Mary's Church
27-28 Life Drawing	Art		10.00am - 4.00pm	Queens Park Centre
28 Half Term Fun	Family	FREE	11.00am - 3.00pm	Kingsbury
28 Lunchtime Classical Music	Concert	£3	12.45pm	St Mary's Church
29 Film Night at the Limelight	Film		8.00pm	Queens Park Centre
30 John Otway	Concert	£12/£14	8.00pm	Queens Park Centre
30-31 Ghouls and Villains	Family		6.00pm - 7.00pm	Tickets from Tourist Info Centre or County Museum

*Opening times 10.00am - 5.00pm Mon - Sat, 2.00pm - 5.00pm Sun



WHAT'S ON SEPTEMBER - DECEMBER 2010

NOVEMBER

1	Reginald D Hunter	Comedy		8.00pm	Waterside Theatre
2	Sally Morgan	Psychic		7.30pm	Waterside Theatre
4	Lunchtime Classical Music	Concert	£3	12.45pm	St Mary's Church
5	Waterside Theatre hosts West End Shows (until 5 Feb 2011)				Waterside Theatre
5-6	EYB - Nutcracker	Dance			Waterside Theatre
6	Fireworks Show	Family			Aylesbury Rugby Club
6	Art and Craft Fair	Shopping/Family	£1/£2	10.00am	Queens Park Centre
6-27	Buckinghamshire Art Society Autumn Exhibition				County Museum
7	Lee Mead	Concert		7.30pm	Waterside Theatre
9-14	Joseph	Musical			Waterside Theatre
10	Aylesbury College Open Day	Education	FREE	10.00am - 5.00pm	Aylesbury College
11	Remembrance Day Service	Church Service	FREE	12.45pm	St Mary's Church
12	Robin Ince's 'Bad Book Club' Tour	Comedy	£7/£8	8.00pm	Queens Park Centre
13	Georgina Mancio & her Quartet	Jazz Concert	£8/£10	8.00pm	Queens Park Centre
15	Jimmy Carr: Laughter Therapy	Comedy		8.00pm	Waterside Theatre
16	Royal Philharmonic	Classical Concert		7.30pm	Waterside Theatre
18	Christmas Lights Switch-on	Family	FREE	5.30pm - 7.30pm	Market Square, Kingsbury and Friars Square
18	Lunchtime Classical Music	Concert	£3	12.45pm	St Mary's Church
19	An Audience with Jimmy Greaves			7.30pm	Waterside Theatre
19	Joanne Shaw Taylor	Blues Concert	£10/£12	8.00pm	Queens Park Centre
20	Julian Lloyd Webber	Concert		7.30pm	Waterside Theatre
20	Kathakali	Dance	£8/£10	8.00pm	Queens Park Centre
21	Santa's Parade	Family	FREE	10.30am	Town Centre and Friars Square
21	Santa's Free Grotto (until 24 Dec)	Family	FREE	11.00am - 4.00pm	Friars Square Shopping Centre
22-27	Calendar Girls	Musical			Waterside Theatre
23	Farmers' Market	Shopping	FREE	9.00am - 2.00pm	Market Square
24	Classical Evening Concert	Concert	£10	7.30pm	St Mary's Church
25	Lunchtime Classical Music	Concert	£3	12.45pm	St Mary's Church
26	Film Night at the Limelight	Film		8.00pm	Queens Park Centre
27	The Lark Rise Band 'Lark Rise Revisited'	Concert	£10/£12	8.00pm	Queens Park Centre
28	Charity Market	Shopping	FREE	11.00am - 3.00pm	Market Square
28	Rhod Gilbert	Comedy		7.30pm	Waterside Theatre
29	Rocky Horror Show (until 4 Dec)	Musical			Waterside Theatre

DECEMBER

Throughout December	Santa's Grotto	Family	FREE		Friars Square
2	Lunchtime Classical Music	Concert	£3	12.45pm	St Mary's Church
3	Ellis James: Daytripper	Comedy	£7/£8	8.00pm	Queens Park Centre
4	Sanju Sahai and Matthew Barley	Music	£6/£8/£10	8.00pm	Queens Park Centre
5	Craft Market	Shopping	FREE	11.00am - 3.00pm	Market Square
9	Lunchtime Classical Music	Concert	£3	12.45pm	St Mary's Church
10	Cinderella (until 9 Jan)	Pantomime			Waterside Theatre
10	Connie Lush & Blues Shouter	Blues/Music	£11/£12.50	8.00pm	Queens Park Centre
11	Christmas Festival	Family	FREE	11.00am - 3.00pm	County Museum
11	Open Mic Night	Comedy	£2/£3/£5	8.00pm	Queens Park Centre
12	Victorian Christmas	Family	FREE	10.00am - 4.00pm	Market Square
12	Aylesbury's Santa Dash	Family	FREE	10.00am - 4.00pm	Market Square
16	Carolfest	Family	FREE	6.30pm - 8.00pm	Market Square
17	Karen Sharp and Robert Fowler Quintet	Music/Jazz	£8/£10	8.00pm	Queens Park Centre
18	How The Koala Learnt To Hug	Family	£4.50/£6/£18	2.30pm	Queens Park Centre
20	Christmas Special Farmers' Market	Adult	FREE	10.00am - 2.00pm	Market Square
21	Christmas Special Farmers' Market	Adult	FREE	9.00am - 3.00pm	Market Square

All details correct at time of going to press.

*Opening times 10.00am - 5.00pm Mon - Sat, 2.00pm - 5.00pm Sun

For event details: Bucks County Museum - 01296 331441 St Mary's Church - 01296 437641
Limelight Theatre Queens Park Art Centre - 01296 424332 www.qpc.org See: www.aylesburyvibe.info

See: www.aylesburytowncouncil.gov.uk

Aylesbury Town Council Magazine

AYLESBURY TOWN COUNCIL



Take a 'Trip Back to Tudor Times' to celebrate...

Aylesbury's Historic Charter Day and Tudor Fayre!

Sunday 12th September 2010
11.00am - 4.00pm in Market Square, Aylesbury

There'll be all sorts of free Tudor fun on offer including workshops and plenty of hands-on activities. The Astrologer and Astronomer will amaze you with their stories and experiments, there'll be candle making, toy casting and even a barber!

Learn how the Tudors used bone and horn, meet the Ratcatcher or be entertained by the popular Peet Fool Tudor Jester.

The day will be accompanied by some genuine Tudor music, and there'll even be a Dragon Dance to enjoy throughout the day. You may even bump into King Henry VIII.

Don't miss the Charter Day Parade, where children from St Mary's School perform Tudor dancing accompanied by music played on instruments of the time. The parade commemorates the granting of a Market Charter to Aylesbury by Mary Tudor on her accession to the throne of England – better known as Aylesbury's Charter Day.

Don't forget - it's free!



For more information contact us on 01296 425678
or see www.aylesburytowncouncil.gov.uk

Aylesbury Town Council
Town Hall, 5 Church Street, Aylesbury, Bucks. HP20 2QP
Tel: **01296 425678** Fax: **01296 426134**
Email: info@aylesburytowncouncil.gov.uk
www.aylesburytowncouncil.gov.uk

Designed and printed by
bluepepperdesigns
creative design and print

8 Temple Square, Aylesbury, Bucks. HP20 2QH
Telephone: **01296 424699** Website: www.bpdesigns.co.uk