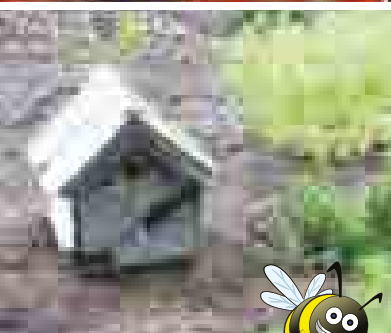
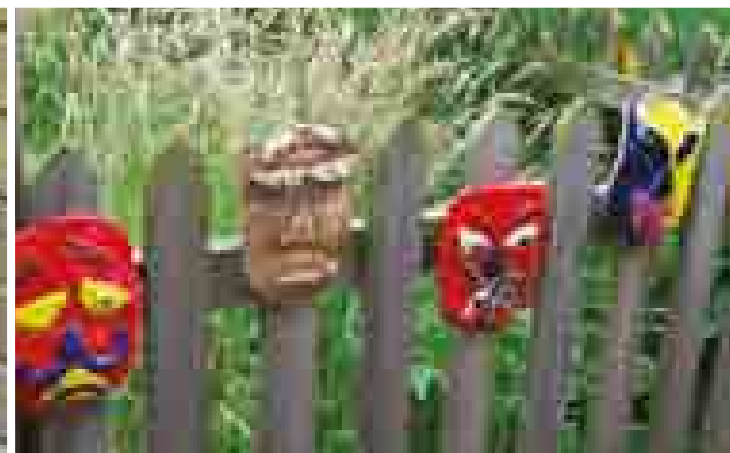
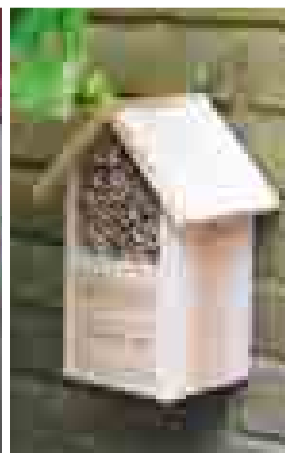
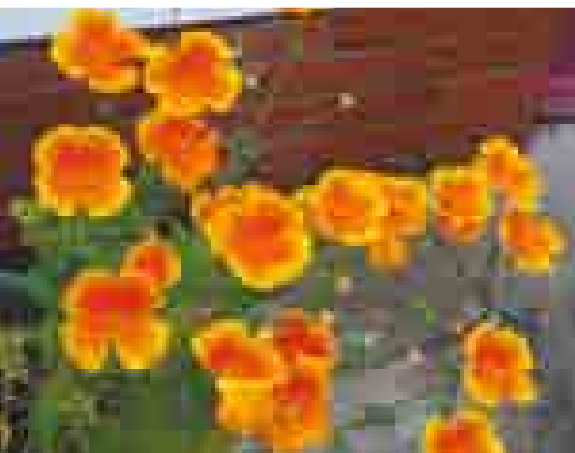
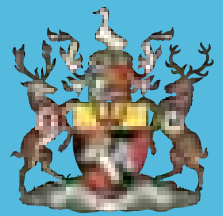


AYLESBURY TOWN

Aylesbury Town Council Magazine
Issue Thirty • Published Quarterly
September to November 2013

matters

Serving the people of Aylesbury



'Take pride in Aylesbury Town'

www.aylesburytowncouncil.gov.uk

Aylesbury's Tudor Fayre on Charter Day

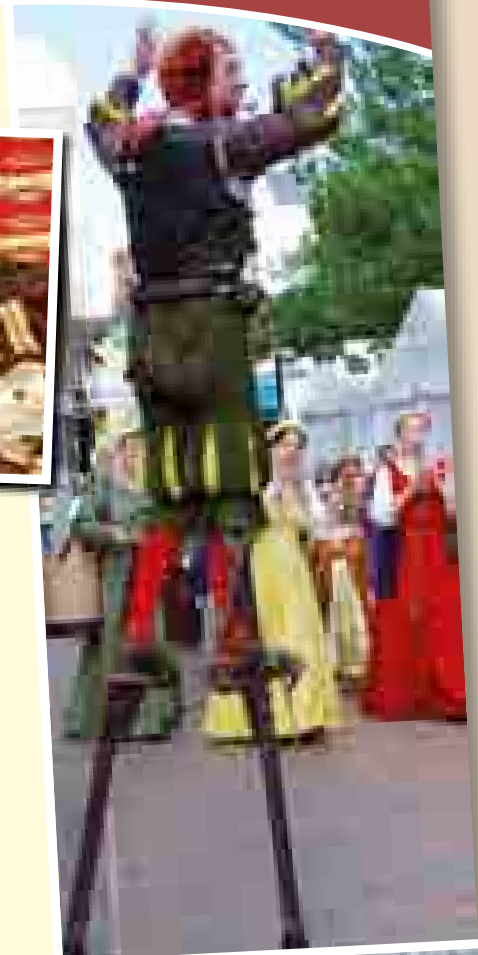
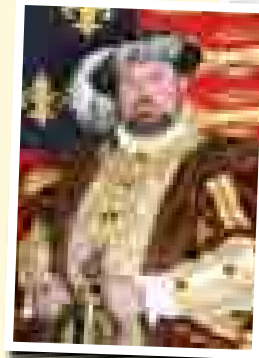
Free
Event

Sunday 15 September 2013
11.00am - 4.00pm

Market Square &
Museum Garden

Entertainment from Peterkin the Fool, Tudor music,
a falconry display and activities for all the family.
There's even an appearance by King Henry VIII!

Come and learn all about life in Tudor times, while
celebrating the Charter that makes Aylesbury
a Market Town.



AYLESBURY TOWN COUNCIL EVENTS
For more information contact us on 01296 425678



Contents

Aylesbury Town Council News & Events

Tudor Fayre	2
Welcome Note	3
The Town Council Ward Map	14
Town Council Services	15
Aylesbury on Sea 2013	16
Halloween Variety Show	17
Town Mayor's Update	18
Aylesbury in Bloom Greeting Cards	20
Map of Aylesbury	20
Heritage Walk Booklet	21
Hire the Chamber	21
Villains of Aylesbury Walking Play	22
Christmas Fair & Carolfest	23

Environment

Britain in Bloom 2013	4-7
Conservation work in Aylesbury	8
Litter Louts	8
Junior Autumnwatch	8

Aylesbury Town Grants

Megan Riley, Haywoods Way Senior Club and Southcourt Baptist Church	9
--	---

Community News & Events

Fundraise for Marie Curie Cancer Care	10
Aylesbury Visitor Information Centre	10
Artists and Makers Fair, Waddesdon	10
Good Neighbour Scheme	11
Curves Fundraising for Local Charity	11
Check your home is secure	12
Aylesbury Youth Motor Project	12
New Community Facilities, Berryfields	13
After School Club, Jonathan Page	13
Buckinghamshire Mind Music Quiz	13
Passport to Leisure Card	13
The Healthy Living Centre Events	19
Southcourt Baptist Church	19

The front cover displays a selection of photos taken during our tour of local schools for the Aylesbury in Bloom competition.

Welcome Note

“ Welcome to the 30th edition of Aylesbury Town Matters.

Since the last edition arrived on your doorstep the Town Council has been working hard during what are our busiest months of the year. As you will read in this magazine, it's been all hands on deck for our free town centre events, our gardening competitions, this year's entry to Britain in Bloom, and the usual demands that the summer months place upon our Outdoor Team.

Aylesbury on Sea took place in July and we have some lovely photos of what was a marvellous day under a hot sun. We have already started thinking about next year's On Sea and we think you'll like the surprises we have in store.

Do look inside the magazine for information on the forthcoming autumn and winter events. It will soon be time for **Tudor Fayre** and King Henry's annual visit to Aylesbury. Children from Broughton Junior School will perform a Tudor dance for the King. Falconry was a favourite pastime of Henry's and we will have live birds of prey under the expert care of a falconer.

We have a new event this year. Look out for the **Halloween Variety Show** on the 31st October. More information is available on the website. Our popular ghost walk, **Ghouls and Villains** has been renamed (see inside) and moved to a later date in November. We sold out quickly last year. Tickets are already available from the Tourist Information Centre. Finally, there is news of the 2013 **Christmas Fair and Carolfest**.

Aylesbury's entry in the regional Britain in Bloom competition was judged in early July and a delegation from the Town Council will be attending the awards ceremony on September 18th. With a Silver Gilt Award and winner of Best Floral Input in 2012, we are hoping to do well again this year. Full details of Aylesbury's marks will be available on the website in late September. Aylesbury in Bloom also took place in mid-summer and we had a truly wonderful time visiting the schools' and residents' gardens. Thank you to all those who entered. We'd still like more next year.

You will also find in these pages stories and notices from a wide range of local community groups. As we have so much to report in this issue you might notice some favourite features are missing. Fear not! The fun page and recipe column will return for the December issue.

Don't forget that we always want to hear from you, the residents of Aylesbury town. We hope you enjoy reading this edition of Aylesbury Town Matters. ”

CLr Mike Smith
Leader of the Council

Aylesbury Town Council is a member of English Historic Towns Forum and twinned with Bourg-en-Bresse.



Contact Details

Aylesbury Town Council
Town Hall
5 Church Street
Aylesbury
Buckinghamshire
HP20 2QP

Tel: **01296 425678**

Fax: 01296 426134

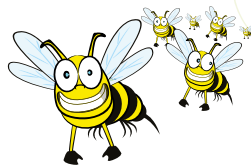
[@aylesburytc](#) [aylesburytc](#)

info@aylesburytowncouncil.gov.uk
www.aylesburytowncouncil.gov.uk

All photos throughout the magazine courtesy of Barbara Cunningham, Alan Norchi and Maurice Cousins

Printed by Bluepepper Designs
www.bpdesigns.co.uk

Environment



Britain in Bloom

Aylesbury's entry in this year's Britain in Bloom regional competition was judged in mid-July

The entry is led by the Town Council, and our Officers escorted the two senior (and one trainee) judges on a tour of the town centre, before going on to look at other areas of the parish.



The competition is a catalyst for the horticultural and environmental projects which we initiate. Most importantly it is a perfect opportunity for the Town Council to strengthen its relationships with groups and individuals in our community who want to be involved.

This year we have been joined in our endeavours by a number of excellent people who have become friends of the Council and have inspired us with their commitment. It was wonderful to share in their enthusiasm as we introduced them and their projects to the judges.

We would also like to thank the Officers from Aylesbury Vale District Council and the Town Centre Partnership who help us prepare our entry to Britain in Bloom.



The judging takes place over a very busy (and this year very hot) three hours of walking and talking. Featured projects this year included Pebble Brook School, The Elms (Sheltered Housing), Pavilion Close community garden, and Bearbrook House (Supported Living).



On the way to each project we stopped to look at town attractions outside of the centre such as Walton Pond and the newly planted flower beds in Aylesbury cemetery, Cambridge Street and Park Street.





Of course the Town Council continues to invest in our floral arrangements for the town. Readers might recall that last year Aylesbury won first prize in the Floral category of the regional finals.

We are pleased with this year's planting, and at the time of writing the baskets, barrier troughs and planters are all coming into full blossom. We know from our letters and emails that residents and visitors greatly enjoy our colourful flowers.

Have you noticed the bees on the Exchange Street roundabout? We chose this floral design to highlight our focus on wildlife this year. Much of our bed planting emphasises the need to help insects sustain themselves through the summer. We all know what important work they do for us.

The Town Council's gardening competition, Aylesbury in Bloom, is always run in conjunction with our Britain in Bloom entry and allows schools, residents and businesses to show off all the hard work in their own gardens.

The judging was performed this year by Cllrs Brian Roberts and Barbara Russell with AVDC Officer Sue Ford and previous winner Sandra Ferguson.

Everyone involved enjoyed the judging days and we saw some very impressive gardens.

On these pages and overleaf you can see some selected photographs of our Britain in Bloom projects and some of the entries from Aylesbury in Bloom schools.

If you would like to see photographs from the residents' entries they are available on our website: www.aylesburytowncouncil.gov.uk/AlBgallery



We have had enormous pleasure in working with our volunteers on all of these projects, and in meeting the many passionate gardeners who keep Aylesbury in bloom.

We are especially delighted and honoured to meet the children and teachers in our local schools who are so busy in their wildlife and vegetable gardens.

We feel confident the local environment will continue to be protected and enhanced by the next generations when we meet with such energy and enthusiasm.

The judges have been and gone but the Town Council will be working all year round to improve the town and find new community partners. **We'll have even more to show them next year.**

Alan Norchi



Environment

Volunteers

Our volunteers are very important to us and we greatly value their participation in several of our gardening projects. In 2013 we have worked hard to increase the numbers of friends who share the workload with us and we have all had a lot of fun together.

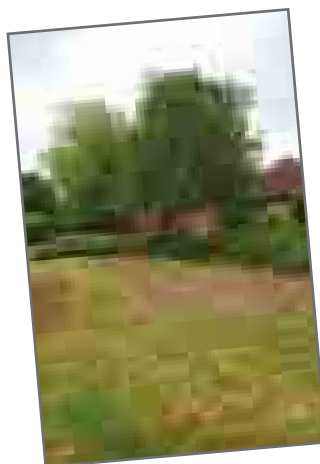
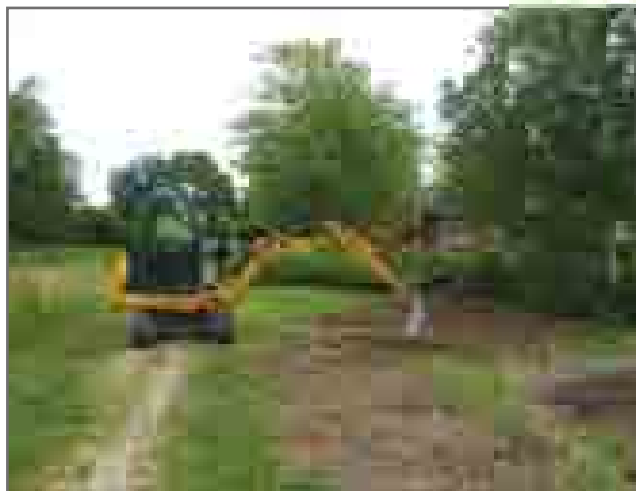
The volunteer teams are invariably the staff and residents of community organisations who have contacted the council seeking support. After a feature in our magazine, Aylesbury Town Matters, we received a number of calls from individuals and groups who wished to start projects.

Everyone who has contacted us is now working on their own project which they will continue to develop with our support.

We have already seen the difference that these projects have made to young and old alike. We believe it is one of the most important features of our work in the Town Council's Communities Team.



Eagles Road Community Garden



We have decided to create a Community Garden here on a piece of wasteland at the end of an estate in the north of Aylesbury. The groundwork was completed by ATC staff and the planting by local volunteer group Community Impact Bucks.

We have resurrected the Residents' Association and members will be taking over responsibility of the garden.

The next stage of development here will be a fourth flower bed reserved for the local children.

Initial feedback is very positive and we're proud to have initiated this project.



Bearbrook House



We received a phone call from a resident of this supported housing project. The large garden was under used and had so much potential. Could we help establish a garden?

Of course we could, and within one week we were there and digging with some of the staff and residents.

A new vegetable patch has been dug and turned and the residents are pleased to be taking over the garden.

They have plans and enthusiasm a plenty and it's a real pleasure to work with them.

California Brook & Long Lional

California Brook

In April a team of volunteers, including Madeleine Vose, students from Aylesbury College, and staff from Aylesbury Town Council rolled up their sleeves and pulled on their wellies and waders to clean up California Brook, a well-known 'grot spot' next to Aylesbury College, which had become a dumping ground for litter.

The volunteers cleared away shopping trolleys, bedding, cushions, a scooter, footballs and all manner of abandoned articles, including over 200 bottles and cans that were taken away to be recycled.



Long Lional

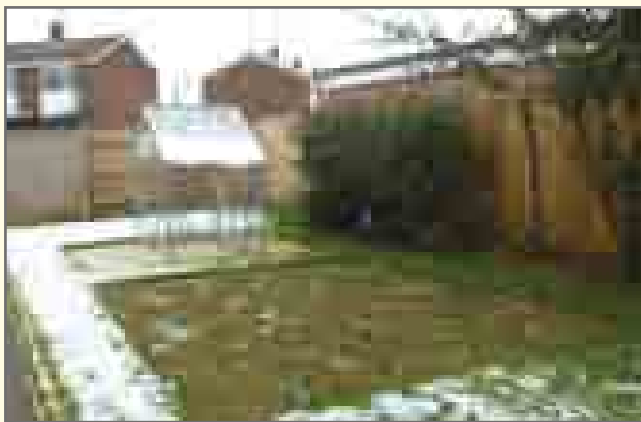
In November Beavers from the 1st Aylesbury Scout Group helped Aylesbury Town Council plant approximately 700 spring daffodil bulbs in the town centre.

The planting took place in shrubbery beds on Long Lional, which faces the Exchange Street car park.

The bulbs were donated by Cllr Brian Roberts.



The Elms



Aylesbury Town Council has been helping The Elms with its new gardening project. Sue Page, Personal Assistant at the supported living accommodation on Elmhurst Road, has been at the forefront of a scheme to get the tenants involved in the gardens.

ATC Officers Alan and Barbara spent a number of days with Sue and residents helping to prepare a new vegetable plot, install raised beds, plant seeds and clear away weeds. The Town Council also donated some tools and compost to help get the work started.

With each week more residents are joining the gardening group, enjoying the outdoors and each other's company.

The gardening work will continue and there are lots of ideas for future years. There's no doubting what a difference a green space can make to people's lives.

Park Street



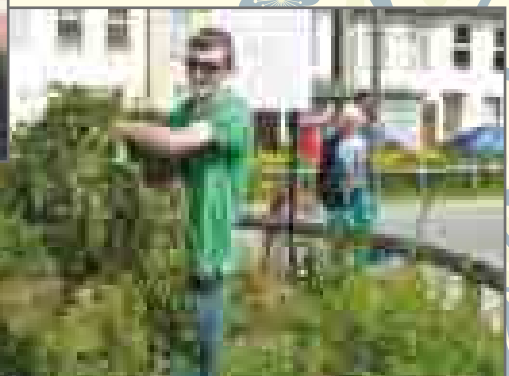
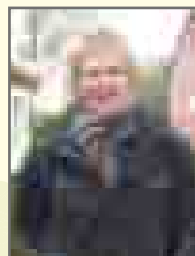
Two large flower beds on a busy road opposite the Vale Park were adopted by our loyal volunteers Wendy and Ray Curtis. In 2012 a great deal of work was done to remove the existing weeds and dead shrubs.

New plants and flowers were added and all was looking good. Unfortunately the bed is infested with bindweed which has covered the site and proved a powerful adversary.

With Wendy's help we aim to keep on top of this so that the existing flowers will still be visible.

In the winter of 2013/14 we will be lifting all the flowers and completely replacing the soil bed in order to remove all remnants of the evil weed.

We'll look forward to showing you the restored bed next summer.



Environment



Building an otter holt

Conservation work in Aylesbury

The Vale Countryside Volunteers celebrated their 10th anniversary in May. The group has gone from strength to strength since the initial grant from the Heritage Lottery Fund in 2003. They have worked with many parish councils during the last ten years, improving the countryside and enhancing the biodiversity of the Vale. They can help restore ponds, build artificial otter holts, plant and manage hedgerows. These are just the tip of the iceberg in terms of the work carried out.

The Vale Countryside Volunteers will be carrying out some practical conservation tasks at various sites. The diary of events is available at www.vcv.org.uk. Tasks planned are tree planting at Bedgrove Park and wildflower planting at Riverside Walk and Buckingham Park.

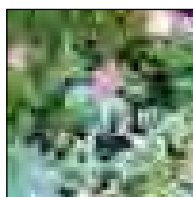
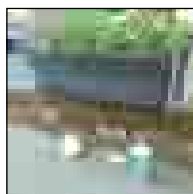
In addition, the AVDC Biodiversity Team will be harvesting cuttings from the Black Poplar nurseries at the two allotment plot sites in the town. These will be used to further increase the genetic diversity of this important tree at various new sites around the town and across the Vale.

Disgraceful Litter Louts

The Town Council spends time, energy and Council Tax payers' funds to improve and brighten the town centre for the benefit of residents and local businesses.

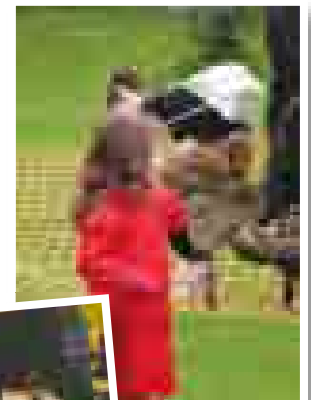
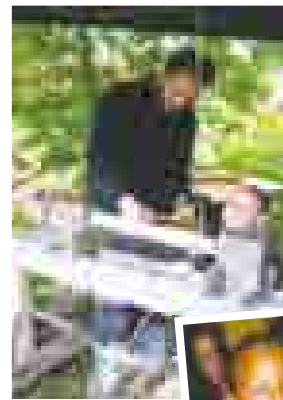
It is clear from the cans, cigarette packets and take-away bags we find amongst the flowers that not everyone cares. It would appear these people have no respect for the town and their fellow citizens.

If it's you, find a bin. The town has many and there's probably one within a short walk of where you choose to chuck your waste.



Are you looking for a fun-filled family day out with a difference?

Junior Autumnwatch is a fun event on Saturday 26 October, 11.00am to 3.00pm for children, young people and their families to encourage and promote ideas for nature and outdoor activities. The event runs alongside the BBC programme Autumnwatch, due to be aired in September and October, and takes place at the Jonathan Page Play Centre (Meadowcroft), Quarrendon and Meadowcroft Community Centre and the adjacent Bowler's Field.



In today's society it's easy for children to fall victim to video games, TV and internet so we aim to provide the perfect opportunity for children and young people to get closer to and interactive with wildlife. There will be birds from Shuttleworth Birds of Prey, farm animals for the children to play with and live creepy crawlies from The Butterfly World Project. There will also be fun hands-on activities such as willow weaving and arts and crafts.

Also on offer will be a wide range of fun yet educational activities provided by various environmental organisations, local voluntary groups and children's play providers. Information will be available about local places of interest, local clubs and organisations, as well as information about the footpaths, cycle-ways, parks and woodland areas in Aylesbury Vale.

Our previous Autumnwatch event in 2010 had over 1000 children and families attend and we're expecting this year to be even bigger!

Come along, have a great time and learn something too!

Aylesbury Town Council Grants

Sports Grant – Megan Riley

In May, 13 year-old Megan Riley received a grant of **£1,000** to help fund the young skier's dream of representing Great Britain at the Youth Olympics, Ski World Cup and Winter Olympics. Megan started skiing aged three, and is now a member of the Great Britain Children's Team – where she recently represented her country in Andorra.

Megan's ambition to become a full-time ski racer means that she faces an intensive training schedule, as well as a blended learning programme that will ensure she is also successful academically.

Without support from Megan's family she would be unable to pay for training, equipment, travel and accommodation essential for Megan to reach her goal.

This year Megan will be trained by former winter Olympian Ross Green and coached by Ben Reid at Elite. She adds: "During the summer I will be continuing with my many sports, which all help my skiing and are really good fun! Thanks to Aylesbury Town Council, Glen Greener at Gravity Snowsports and Sno-zone for their continued support."



Haywoods Way Senior Club

Aylesbury Town Council awarded Haywoods Way Senior Club **£250** for an electronic bingo machine. Bingo is one of the most popular activities at the club, but as many of the elderly residents are hard of hearing, there was often confusion when the bingo numbers were called.

The new electronic bingo machine will be very valuable in solving this problem and will mean that all members can take part in a game or two.

The Club meets every Wednesday afternoon at Quarrendon and Meadowcroft Community Centre. It is a fantastic outlet for members to get together socially and take part in hobbies, outings and other activities. Mrs V Taylor, Haywoods Way Senior Club Secretary said, "It is important to our members to get together as apart from carers they don't see many people and some families live away."



Photo courtesy of the Bucks Herald

Southcourt Baptist Church

A grant of **£656.50** has been given to Southcourt Baptist Church to help fund their annual "Holiday at Home".

This year's theme is "The Sound of Music", and throughout the day, guests will have the opportunity to take part in a range of music based activities, including making a clock from a CD, a choir workshop, music making workshop, an old favourites sing-a-long, a fish and chip lunch and afternoon tea.

The fun day has become an integral part of the yearly programme for this group of older friends. The day is very important to some of those who take part, as they do not have the opportunity of having a holiday away from home. The concept means that they can enjoy themselves as if they are on holiday, whilst still having the comforts of their own home at the end of the day.



Should you wish to apply for a grant please contact our Grants Administrator, Belle Daytonn at the office on 01296 425678 or if you prefer email her at: b.daytonn@aylesburytowncouncil.gov.uk

by Barbara Cunningham

Community News & Events



Are you involved in a local community group or charity in Aylesbury? Would you like to promote your work and events?

This magazine is delivered to every household in Aylesbury Town. For more information call Alan on 01296 425678 or alternatively email us at: info@aylesburytowncouncil.gov.uk. There is no charge for community groups and charities.

Can you and a group of friends get together as a team to help fundraise for Marie Curie Cancer Care?



Marie Curie Cancer Care provides high-quality nursing, totally free, to give people with terminal cancer and other terminal illnesses the choice of dying at home surrounded by their families.

Our vision is to have a Fundraising Group in every town across Buckinghamshire, enabling us to raise more money, which will support the increase of nursing services for the county.

As a charity we rely on volunteer Fundraising Groups to raise vital funds and awareness of the charity's work and we are looking to form a group in the Aylesbury area.

By meeting as a group on a regular basis you would be supporting fundraising in your area. Not only would you be helping to raise funds to benefit the charity but there is lots of fun to be had along the way.

If you are interested in finding out more please call Hazel Bendon the Buckinghamshire Community Fundraiser on 01604 258758 or email: hazel.bendon@mariecurie.org.uk

Want to buy something different for your loved ones?



Then why not go to **Aylesbury Visitor Information Centre** to buy unique gifts and handcrafted local Christmas cards at competitive prices.

The Visitor Centre, which is located in the King's Head passage also sells locally made calendars and sells stamps. Gifts range from Buckinghamshire chutneys, honey and jams to handmade jewellery, soaps and handcreams to Midsomer Murder books.

Visit the Aylesbury Visitor Information Centre today, located in the King's Head Passage off the Market Square, HP20 2RW.



Artistic Talent returns to Waddesdon

The Artists and Makers Fair has announced it will be showcasing some of the most talented local artists as it returns to Waddesdon Manor Plant Centre this October. Taking place 5 - 6th October 2013 at the Glass House in Waddesdon, the Artists and Makers Fair will bring together local artists including painters, printmakers, photographers, ceramicists, jewellers, textile and glassmakers and many more.



The Artists and Makers Fair is one of the largest visual arts events in the area and visitors will be able to see local artists in action giving live demonstrations of their art.

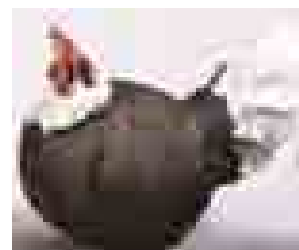
Sally Evans, organiser of the Artists and Makers Fair, said "After highly successful events last year we are delighted to be returning to the Glass House. There is

an abundance of local artistic talent and I am delighted that we can showcase and demonstrate some of the incredible work that they do."

Sally continued "We really hope that people will visit the event and support our local artists and marvel at their skills. Visitors may even want to take home some locally-made, handcrafted pieces of art that you can't find on the high street."

The event is open 10.00am - 4.00pm each day and the entry cost is £3 per adult, with a significant proportion of the proceeds going to local charities Helen and Douglas House, Action Medical Research and Young Carers Bucks.

To find out more about the event and artists visit the website: www.sallyevansevents.co.uk



Left: Richard Ballantyne, right: Laura Boswell and top photo Laura at work



Good Neighbour Scheme in Aylesbury

The Good Neighbour Scheme (previously known as the Southcourt and Walton Court Good Neighbour Scheme) is continuing as an independent voluntary scheme with the aim of supporting older people in Southcourt and Walton Court and surrounding estates.

The Scheme was originally funded and managed by Age UK Buckinghamshire with various start up grants, for example from Aylesbury Town Council and Aylesbury Vale District Council. The scheme started in August 2011 and Age UK Buckinghamshire supported it until March 2013. The Scheme became independent from April 2013 and is now self funding.

The Scheme has a small group of volunteers who support a number of older people in different situations. At present we support people in the following ways:

- three people are helped to attend the weekly Movers and Shakers group at the Church of the Good Shepherd
- one lady is taken out for a walk in her wheelchair when the weather is fine enough
- we support people with outpatients appointments when they have no one else who can do this
- we take one lady shopping every week

Activities can be regular or one-off depending on what the person wants. The service is free but we ask for contributions to mileage costs when we take people out in our cars. All volunteers have a criminal records check and the scheme has full liability insurance.

If you are interested in volunteering or would like to make use of the scheme please contact one of the co-ordinators on 07967 734582 for further information.

Curves

mind
for better mental health
Buckinghamshire

Fundraising for Local Charity

Curves the ladies gym in Aylesbury is raising money for Buckinghamshire Mind by holding a **week of fundraising from 9th to 14th September 2013**. Throughout the week there will be a secondhand book sale and raffle and all the money raised will be going towards their Adult Counselling Service.

The counselling service for adults operates in Aylesbury and High Wycombe seeing clients with a range of mental health needs. Buckinghamshire Mind pride themselves on having really high clinical standards, offering a fantastic service to their clients, many of whom would not be able to access support elsewhere. They do not receive any funding for this service and they are committed to a policy of never turning anyone away from the service who needs their support.

Curves is keen to promote the benefits of exercise as it's not only for maintaining your weight and staying healthy. As one of the **'Five Ways to Wellbeing'**, being active is great for relieving the stresses of life as it helps your mind by releasing those feel good chemicals that lift your mood. The effects are long lasting and you'll have more energy throughout the day.

Regular physical activity can improve your muscle strength and boost your endurance. It delivers oxygen and nutrients to your tissues and helps your cardiovascular system work efficiently to give you more energy to go about your daily chores.

Exercise not only prevents excess weight gain or helps weight loss, it can also combat health conditions and disease – it's one of the best ways to ease the pain of arthritis.

Research shows that a more physically active lifestyle results in a reduced risk of coronary heart disease. Even becoming more physically active in later adulthood can strongly decrease the risk. Like everything else about aging bodies our muscles lose strength if we let them go. The key to stronger bones lies in muscle strength training or resistance work. Remember to check with your doctor before starting a new exercise programme, especially if you have any health concerns.

Should you wish to donate unwanted books or gifts suitable for raffle prizes please drop into Curves at 61-63 High Street, Aylesbury, Bucks. HP20 1SA or call 01296 330303.

Buckinghamshire Mind www.bucksmind.org.uk



Is it time to check your home is secure?

As the summer draws to a close and the autumn comes, it is important to keep your home secure. On 27th October, the clocks will go back an hour and the darker nights will draw in. Follow the Community Safety Partnership top tips to make sure your home is secure as the seasons change.

- Lock your doors and windows regardless of whether you are in the property or not. The point of entry more than 75% of the time is through a door or window.
- When the clocks go back, leave a light on! Timer switches activating a light upstairs are great at making your home appear occupied.
- Don't leave expensive items on display. Put valuable gadgets out of sight of windows and doors.
- Keys left near entry points can be 'fished' or 'hooked' out through the window, letter box or cat flap. Put keys away and out of sight.
- Outside security lighting and a household alarm are great ways to deter opportunists.
- Thorny shrubs growing under windows or against access routes such as drainpipes, walls and fences create an effective natural barrier. Berberis, blackthorn, rubus and pyracantha are all good for this. They are easy to grow and readily available from your garden centre.
- Ensure any internal handle operated locks on UPVC doors are fully secured with a key.
- Property mark your valuables with UV Pens, Selecta DNA or Smartwater. When goods are marked it enables recovered property to be returned and improves the chance of conviction.
- If you see anything suspicious please call the non emergency 101 police contact number. If you believe a crime is in progress call 999.

For further information please visit:
[www.aylesburyvaledc.gov.uk/
community-living/community-safety/](http://www.aylesburyvaledc.gov.uk/community-living/community-safety/)

42 AYMP

The Aylesbury Youth Motor Project

TURNING LIVES AROUND

The Project has an enviable record of turning around the lives of young people. One recent case is the story of a young man who was 'heavily involved with the police' who came to the project and found the self-confidence and self-belief that had been missing. Within twelve months he had qualified with a Diploma in Motor Vehicle Studies, obtained his First Aid and Health and Safety certificates and secured an apprenticeship with Nissan.

TURNING THE SCREWS ON CRIMINALS

Project students volunteer their time on Saturdays to fit anti-theft number plate screws and etch catalytic converters, free of charge, to help motorists protect their vehicles. Look out for more sessions during the autumn.

NEW ZEALAND POLICE VISIT THE PROJECT

In April a New Zealand policewoman Gaylene Rice, was invited by the local neighbourhood police team to visit the Project and see the work being done to help, often troubled, youngsters turn their lives around. Suitably impressed she felt that the Project provided an excellent model that could be used 'back home'.

PARTNER ESTABLISHMENTS

Aylesbury Vale Academy • The Grange School
Mandeville School • Princes Risborough School
The Chiltern Way Federation of Prestwood Lodge
and Wendover House • Connexions
Benjamin UK and the Education Youth Service

CAN YOU HELP?

Donations of **unwanted cars and motor cycles** for our students to work on are always gratefully received... we can come and pick up. If you are having problems with your car and need help and guidance please do not hesitate to give us a ring. We can probably help!

You can also give financial support through:
easyfundingraising.org.uk/aymp

The **Aylesbury Youth Motor Project (AYMP)** was founded in 2004 and attracts students from the surrounding mainstream schools and other establishments involved with the development and training of young people.

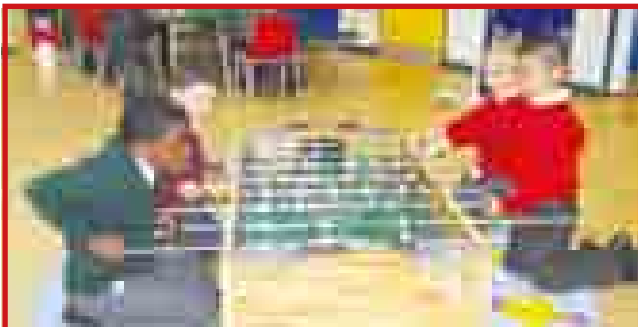
Aylesbury Youth Motor Project is a registered charity (1106085) and can be contacted at Unit 42, Edison Road, Rabans Lane Industrial Estate, Aylesbury, Buckinghamshire, HP19 8TE Phone/Fax: 01296 422113. Email: aylesburymotorproject@hotmail.com. Further contact details on the website: www.aylesburymotorproject.co.uk

New Community Facilities on Berryfields Estate

As part of a Community Use Agreement between Aylesbury Vale District Council and Bucks County Council, facilities at the Berryfields Primary School and Academy will be available for hire from November 2013.

The Primary School Community Rooms will be available from 8.00am to 10.30pm week days, and 9.00am to 10.00pm weekends during term time and school holidays. The Academy facilities include an indoor sports hall, outdoor synthetic pitches and other community rooms which will only be available outside term time, weekends and school holidays.

For further information please visit the website: www.theacademy.me or for booking enquiries please contact 01296 428551.



The After School Club with a difference

The Jonathan Page Play Centre in Aylesbury offers a fantastic After School Club for children between 4 and 12. The centre is purpose built, Ofsted registered, has qualified and DBS checked staff and has a large secure outdoor play area. There are collection services available from several Aylesbury schools too.

Children get to choose from a variety of indoor and outdoor activities, receive a healthy snack tea and if they want can work in the quiet homework area. Open 3.15pm to 6.00pm, it is only £7.50 per child per day or £6 with a valid Passport to Leisure card.

This autumn, children will learn about animals that hibernate in the colder months, how to look after animals and can use their imagination to create new animals. In addition, children will be looking at how everyday items work, and will be given the chance to deconstruct and invent their own.

Call 01296 426139 or go to the website: www.aylesburyvaledc.gov.uk/play to find out more or to make a booking.

 **mind** | Buckinghamshire
for better mental health

Music Quiz

in aid of Buckinghamshire Mind

**Saturday 12th October 2013
at 7.30pm**

Hawkslade Community Centre, Orwell Drive
Aylesbury HP21 9YL

Teams of 6 - 8 people
£10 per person including fish and chip supper*
Bring your own drinks.

Raffle and tombola

To book your place call Lorraine on 01296 429135
or email: lorraine.evans@bucksmind.org.uk

*Choice of cod, fish cake, sausage, chicken & mushroom pie
or veggie burger – all served with chips

Fundraising for our Counselling Services

Buckinghamshire Mind (The Buckinghamshire Association for Mental Health) is a Company Limited by Guarantee
Company Registration No. 5889185 (England) Registered Charity No. 1183863

Enjoy money off your favourite leisure activities

If you claim benefits and live in Aylesbury Vale you could be eligible for a **Passport to Leisure Discount Card**. With the card you can get discounts for leisure, sports and arts activities and days out, so you can keep enjoying your leisure time despite these difficult economic times. Discounts are available for people of all ages for a variety of activities. **Latest offers include:**

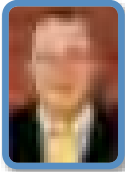
- Jonathan Page Play Centre holiday play schemes and after school club in Aylesbury
- Aqua Vale and Swan Pool Leisure Centres
- Stoke Mandeville Stadium – various activities
- AVDC Ballroom Dancing sessions for adults
- Bucks Play Association play schemes
- Southcourt & Walton Court Community Project
- The Musical Kidz Company
- ZKS Martial Arts
- Aylesbury and District Swimming Club
- Kandeex Dance School
- Roald Dahl Children's Gallery and many more...

To check whether you are eligible for a card see the website www.aylesburyvaledc.gov.uk/passport or telephone 01296 585301.



Aylesbury Town Council Ward Map

Ward: Gatehouse



Cllr Stuart Jarvis
07958 083519



Cllr Pat Jamieson
01296 428275

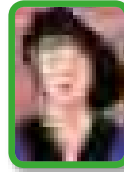


Cllr Tuffail Hussain
07886 295946

Ward: Central

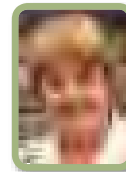


Cllr Steven Mitchell
01296 392096

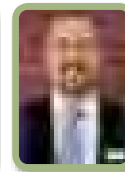


Cllr Barbara Russel
01296 431314

Ward: Elmhurst



Cllr Jenny Puddefoot
01296 612461

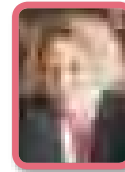


Cllr Iain Bozier
07941 164477

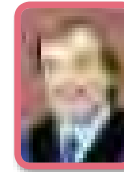


Cllr Mohammed Amjad
07956 803458

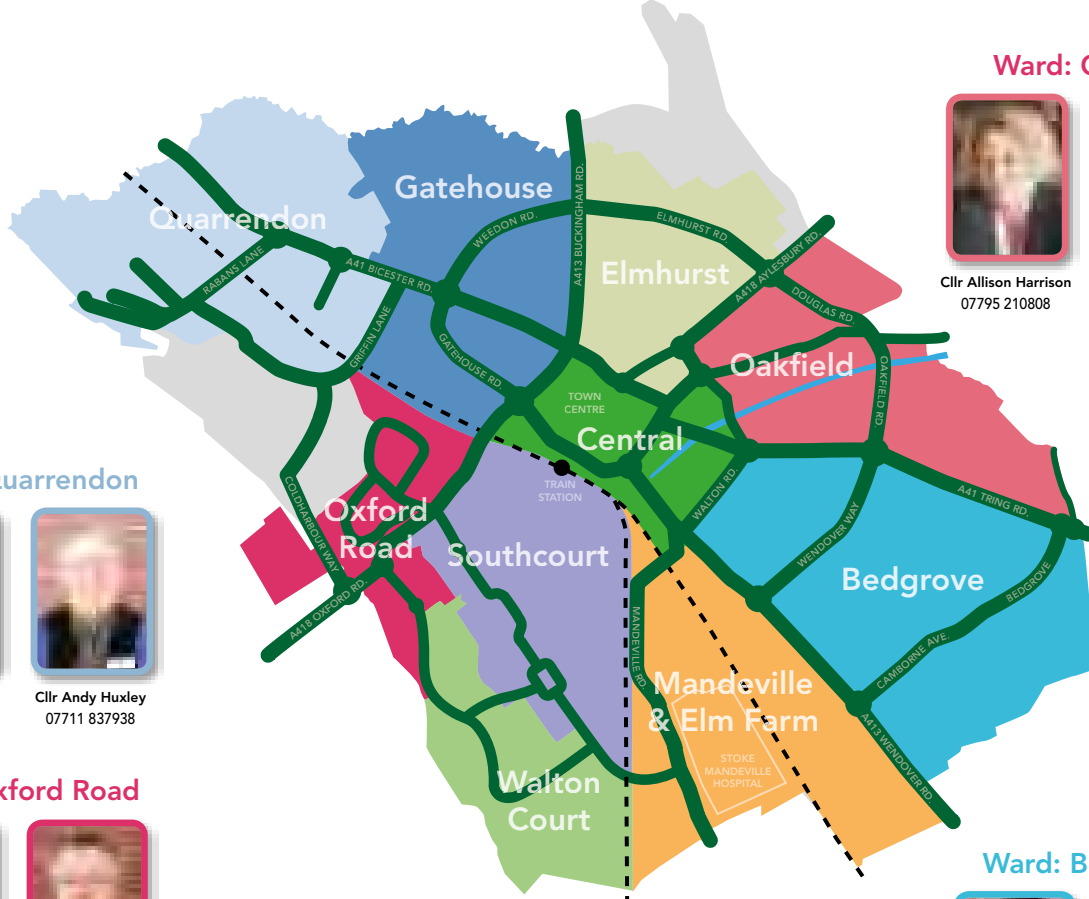
Ward: Oakfield



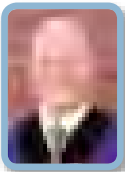
Cllr Allison Harrison
07795 210808



Cllr Steve Patrick
01296 424986



Ward: Quarrendon



Cllr Chris Adams
07986 543211



Cllr Andy Huxley
07711 837938

Ward: Oxford Road



Cllr Zulifqar 'Tom' Ahmed
07731 328011

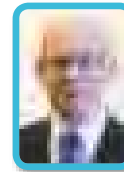


Cllr Mike Smith
01296 484299

Ward: Bedgrove



Cllr Jenny Bloom
07729 011501



Cllr Tom Hunter-Watts
07595 178660

Ward: Walton Court



Cllr Ranjula Takodra MBE
07958 423083



Cllr Loui Cirillo
07767 478696

Ward: Southcourt

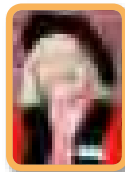


Cllr Michael Beall
01296 431499



Cllr Matthew Launchbury
07837 604284

Ward: Mandeville & Elm Farm



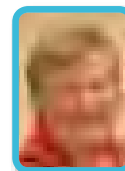
Cllr Denise Summers
01296 424903



Cllr Sue Chapple
01296 426814



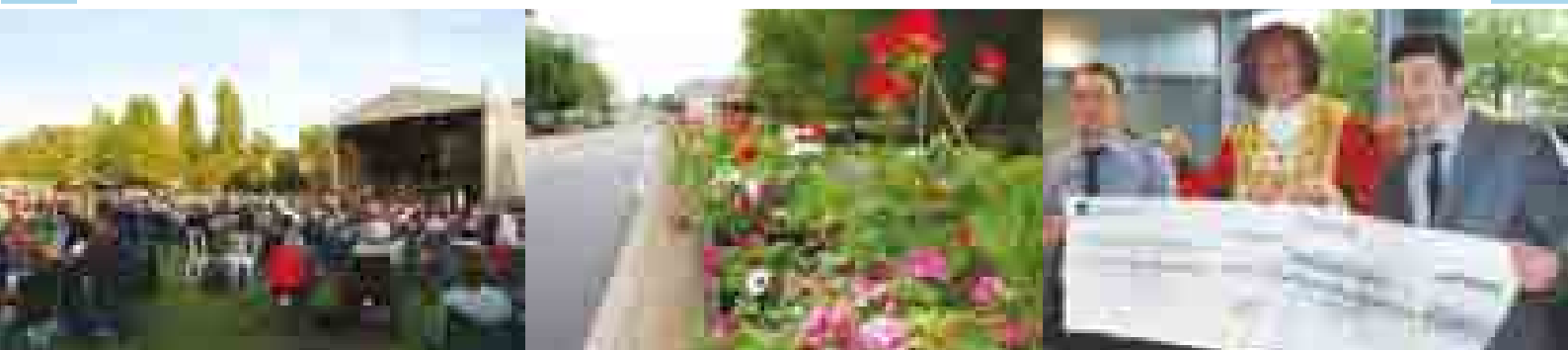
Cllr Brian Roberts
01296 422881



Cllr Penni Thorne
01296 422232



Cllr Mark Winn
01296 393304



The Work of Aylesbury Town Council

Here at ATC we are coming to the end of another busy summer. As the Authority responsible for the town's seven allotment sites and the cemetery our Outdoor Team work hard to keep on top of maintenance schedules. Meanwhile the Events Team are managing the logistics behind popular days like Aylesbury on Sea and Proms in the Park.

Our Communities Section coordinates initiatives such as Britain in Bloom and Aylesbury in Bloom. This might mean project work out and about in the town, or managing its responsibility for the town centre planting arrangements. It also manages this magazine, our website and our social networking.

This year like every other year the Mayor and Deputy Mayor are regularly to be seen around the town meeting residents, supporting community groups and representing Aylesbury town at formal occasions. The Mayor is an ambassador for the town and the Town Council is proud to hold this office.

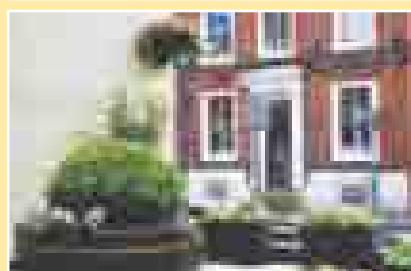
Whilst in many respects we operate independently, the Town Council works closely with other organisations to enhance the town centre and make it as attractive as possible for residents, visitors and businesses. For example with the County Council we work on the local environment and with the District Council there are many occasions for joint working on events. We are a principal member of the Town Centre Partnership and support the Town Centre Manager wherever possible to improve conditions in the town centre.

All of this work is supported by an administrative team that responds continuously and conscientiously to its obligations as one of England's largest town councils. These functions are a just snapshot of how the Town Council is fully involved in the life of the town. Each day brings new enquiries and new opportunities to support and promote Aylesbury.

Alan Norchi
Communities Officer

Here are some specific examples of initiatives and projects we have undertaken in recent months, or where we have made a significant contribution:

- Increased investment in **floral arrangements** and an expansion of **planting around the town**.
- £10,000 provided for **Retail Lift Off** – to encourage businesses into Aylesbury (managed by the Town Centre Partnership)
- Development of **community gardens** and **public gardens**
- Environmental improvements in **High Street, George Street** and **Exchange Street car park**
- **Savings** in the cost of events management allowing for **new events** to be planned.
- Funds set aside for the return of **Hobble on the Cobbles**
- Development of a **growing volunteer group**
- Increased level of work with **BCC and AVDC communities teams** to support local projects
- Focus on **increasing the level of grant applications**, especially for local sports





Happy to be cooling down on a hot day at the seaside

Aylesbury on Sea 2013

A hot July day in Kingsbury was the perfect setting for Aylesbury on Sea 2013. One of the Town Council's most popular free events brought a large crowd of happy families to the square and there was plenty of entertainment for all.

Some of our old favourites returned to Aylesbury. We were excited to see Mike's Donkeys for the second year and the queue for a little ride up Pebble Lane was always long, despite the heat.



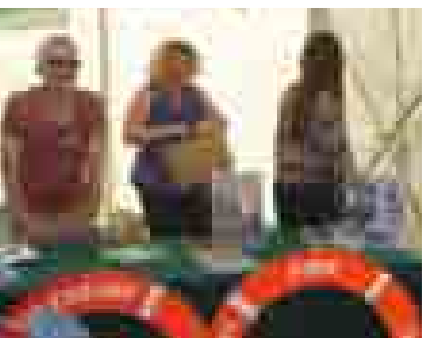
Kingsbury with deckchairs ready for relaxing with an ice cream



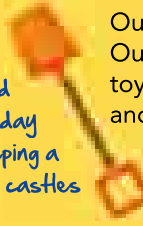
Mike's rescued donkeys take children for a gentle ride

Uncle Mick laid out his deckchairs and then we all sat down to watch the hilarious antics of Punch & Judy. With inflatables providing lots of bouncy fun and a busy waltzer spinning round the atmosphere in Kingsbury was colourful and lively.

Our big, bright sand-pits, made by the Town Council Outdoor team, were filled with buckets and spades and toys (and some sand of course). The toddlers love them and they were full all day.



Councillors Mike Smith and Allison Harrison spent the day meeting residents and keeping a watchful eye on the bouncy castles



Music was provided by local players: 1950s style singers the Lulalas alternated with some relaxing summer jazz from the Aylesbury Concert Band. Ice cream and candy-floss were on offer and the cafés around the square enjoyed some al fresco service.

The Town Council marquee was host to an information table and Leader of the Council Cllr Mike Smith and Cllr Allison Harrison spent the day helping officers and chatting to visitors. We also hosted our popular craft tables for those little ones who wanted to sit for a while in the shade and make some seaside themed decorations.



Water, sand and sunshine; a perfect day

Like all of our events, Aylesbury on Sea is made all the better for the help given by a small team of volunteers, so our special thanks this year to Lauren, Catherine and Izzy who worked hard to help us make Aylesbury on Sea a safe and happy event.

If you came along we do hope you enjoyed it as much as we did.

Make a note for early July next year and join us in Kingsbury for a lot of fun and jollity.





HALLOWEEN VARIETY SHOW



**THURSDAY 31ST OCTOBER,
4PM – 8PM, MARKET SQUARE**

With ghostly entertainment, terrifying tales and fiendish fun for all the family. Prepare for a spooky spectacle to remember! Prizes for the best fancy dress.

www.aylesburytowncouncil.gov.uk



Town Mayor's Update

Mayor Making, May 2013

Former Mayor, Cllr Ranjula Takodra MBE handed over the Chain of Office to Cllr Steve Patrick on the 18th May at the Annual Mayor Making Ceremony held at Aylesbury College. At this event, Cllr Takodra was delighted to present a cheque to her chosen charity Home-Start, Aylesbury for £4580 following many fundraising events over the year.

She was also delighted to announce the winners from the Town Mayor's Award and present them with a certificate of achievement and hand over certificates of thanks to the Mayor's Cadets who have supported the Mayor during her term of office.



New Mayor gets busy in the community

Aylesbury Town Mayor, Cllr Steve Patrick has had a busy start to his term as Mayor, following the inauguration in May. He has supported a number of events over the past couple of months, including the opening of the new Chat Charity shop based in Cambridge Street.

The Mayor and Deputy Mayor, Cllr Tuffail Hussain, were also delighted to meet a number of students on exchange visits to Aylesbury.

Children from the Notre Dame School in Bourg-en-Bresse visited the Chamber and Mayor's Parlour following their visit to Turnfurlong Junior School, where they have recently become twinned.

There was also a visit from students from Imst, Austria, whose teacher has been bringing students to visit Aylesbury for the past 20 years. The highlight of their visit, apart from the juice and biscuits, was the opportunity to try on the mayoral robes.

The Mayor also had the opportunity to attend the opening of the Aylesbury Project Community Interest Company with Fern Britton. Based in the Gatehouse Industrial Area, The Aylesbury Project is a non-profit organisation with three core aims: 1. to promote social inclusion amongst the adult learning disabled population; 2. to improve the environment, by improving the area's recycling performance; 3. to help the community by becoming a community resource for reusable items, bringing local businesses, adults and children together with the learning disabled.

He was also pleased to continue to support the Aylesbury Quakers Soup Lunch which fundraises for the homeless in Aylesbury.

Over the coming weeks and months, the Mayor is looking forward to holding his Civic Service at St Mary's Church on the 22nd September at 3.00pm, and meeting many organisations, charities and residents of Aylesbury.

Sue Carpenter

If you would like to invite the Mayor to attend an event you are holding, please contact the Mayor's Assistant Sue Carpenter at the Mayor's Office by calling 01296 425678 or email: s.carpenter@aylesburytowncouncil.gov.uk



CHILD HEALTH CLINIC AND PLAYTIME

Every Monday morning 10.00am
last entry at 11.45am

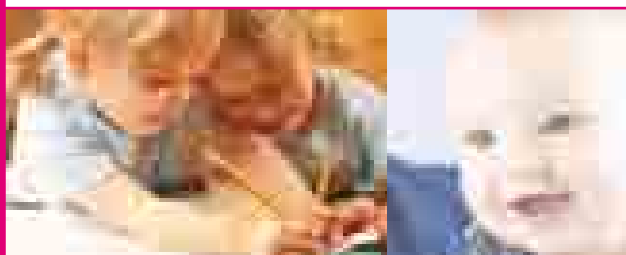
This is a **drop-in session** run for parents to access health advice, have their children weighed and spend some time together meeting other families.

SATURDAY MORNING DAD'S GROUP

Are you a dad, grandad or carer finding it difficult to go somewhere with a child under 5? Why not come along and socialise with others at our fortnightly coffee morning/activities.

Alternate Saturdays, £1.50 per family

**both groups at: Southcourt Children's Centre
Aylesbury College Campus, Oxford Road
Aylesbury, Bucks HP21 8PD
01296 487855**



MESSY PLAY

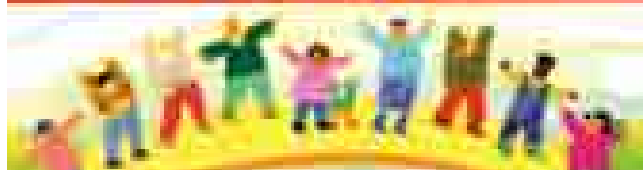
For ages 0 - 5 years

Mondays 11.30am - 12.15pm
£1.50 per family

PLEASE BOOK IN ADVANCE

**at Southwest Children's Centre
The Healthy Living Centre
Walton Court Shopping Centre, Unit 1
Hannon Road, Aylesbury, Bucks HP21 8TJ**

Parenting Courses



If you are interested in attending a parenting course please contact Southcourt Baptist Church.

Telephone: 01296 480080
email: office@southcourt.org
40 Penn Road, Aylesbury, Bucks. HP21 8HW



Money Management Centre

We are living in hard times, and for various reasons many people are experiencing financial difficulties.

Southcourt Baptist Church is able to offer a free, confidential, practical money management service to people who seriously want to work their way out of their situation.

The service has been licensed by the Office of Fair Trading (Certificate No. 508279) and is managed by a retired bank manager who has a lifetime of experience in assisting people with money problems.

After initial contact to assess the amount of debt, an agreed plan will be prepared (this will take place on church premises whenever possible, other arrangements can be made if necessary).

Contact with creditors will be handled by the manager or his staff, thereby taking stress away from the client. The client will be encouraged to accept and adhere to a budget, as this is recognised as a very helpful method of financial control.

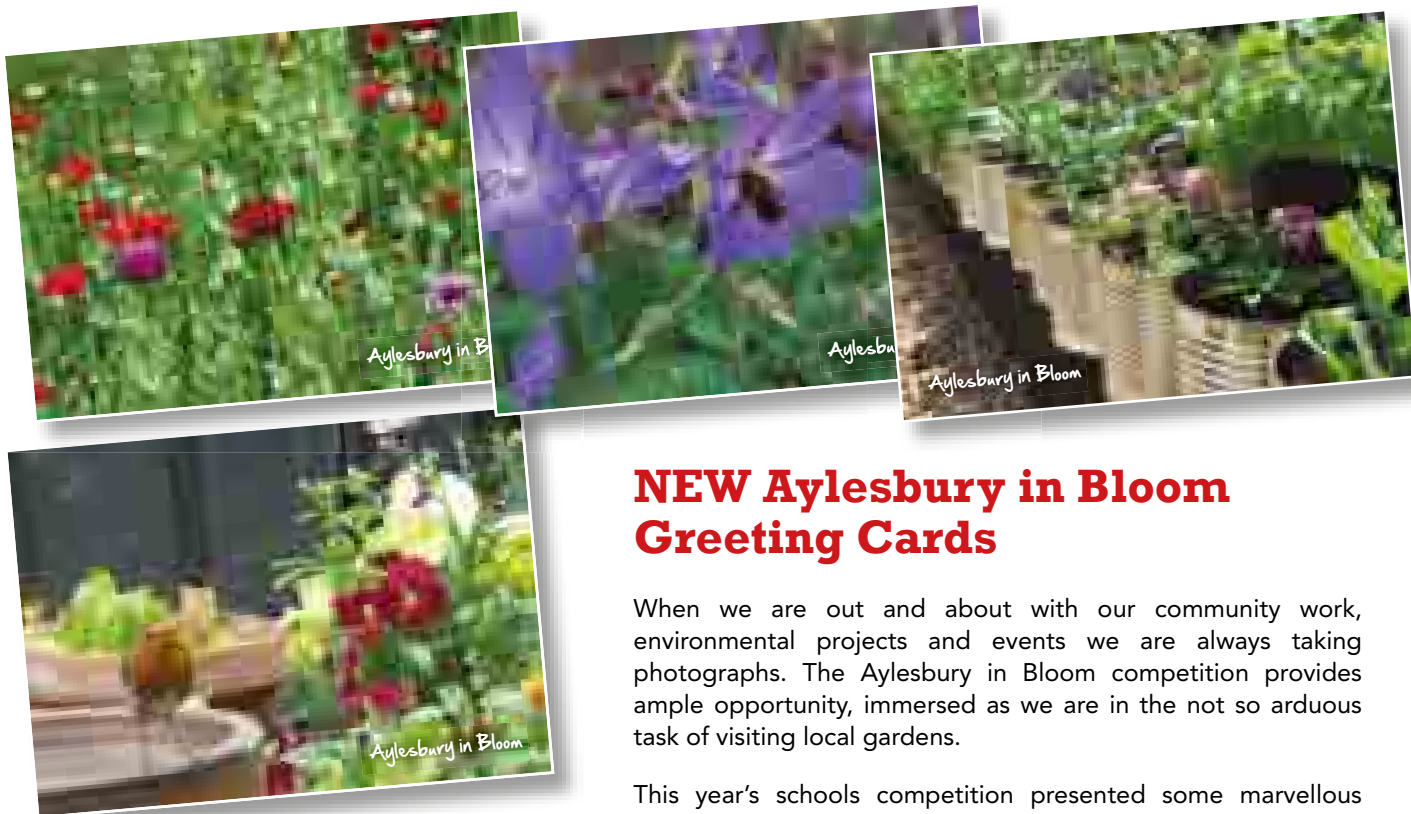
Services offered:

Free assistance • Confidentiality assured
Negotiating with creditors • Financial overview
Budgetary control • Court representation
Ongoing support • Experienced personal adviser

Drop-in Sessions at Southcourt Baptist Church on 9th September, 14th October, 11th November

**40 Penn Road, Aylesbury, Bucks. HP21 8HW
Tel: 01296 480080 email: office@southcourt.org
www.southcourtbaptist.org.uk**

ATC News & Events



NEW Aylesbury in Bloom Greeting Cards

When we are out and about with our community work, environmental projects and events we are always taking photographs. The Aylesbury in Bloom competition provides ample opportunity, immersed as we are in the not so arduous task of visiting local gardens.

This year's schools competition presented some marvellous images. We would turn a corner or walk through a gate to come upon a wonderful array of flowers, or a sculpture, or a flawless vegetable bed.

We decided we should share some of these images with you and so have created 4 seasonal greetings cards which are available to buy.

The cards cost £1 each (plus postage if required) and can be bought in any amount. They are left blank for your own message and are printed on sustainably produced paper. Profits will be shared between the Mayor's charity and our own community projects (like donating gardening equipment to local schools and other groups).

We would like to produce a set of 4 cards for each season. So look out in early December for our winter and Christmas cards. Details will be available on our website or in the next edition of Aylesbury Town Matters.

SEND US YOUR PHOTOS

We do enjoy taking photos during our work, but we love seeing yours too.

This is not a competition. There is no deadline because we always want to see them. Our favourites will be selected for inclusion in the greetings card series.

Send your photos to:
a.norchi@aylesburytowncouncil.gov.uk

If you have any questions please contact us by email or by phone and ask for Alan or Barbara.

Buy your own copy of this fantastic map

In issue 29 of ATM we offered readers the opportunity to purchase a copy of the front cover photo; a colourful map of Aylesbury.

It was devised and drawn by Charles & Barbara Ashton Waller in 1951. The attention to detail really brings Aylesbury to life as it was – a growing market town.

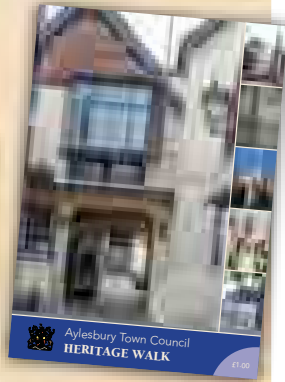
Your own high quality version of the full map, measuring approximately 12 x 16 inches, costs just £5 and can be purchased from the Tourist Information Centre and the Bucks County Museum.



Aylesbury's not all about ducks...

The town's history runs deeper than that.

In the last few months Aylesbury Town Council and the Aylesbury Society have re-launched **The Aylesbury Heritage Walk**. A fascinating self-guided walk that gives you an insight into the town's architectural history spanning many centuries.



The name Aylesbury, or 'Aigle's Burgh' meaning hill town or fort, can be traced back to the Iron Age. Indeed, excavations in the Old Town in 1985 found the remains of an Iron Age hill fort dating back to 650BC. Today, still a market town at heart, Aylesbury has developed around the original Market Square, Temple Square, Kingsbury and St Mary's Church to become a large, commercially vibrant town with over 67,000 inhabitants.

The Aylesbury Heritage Walk starts on the steps of County Hall in Market Square and guides you around the Conservation Area, revealing aspects of the town's past which are still evident today. **Did you know that public hangings took place from the Court building? Or that Oliver Cromwell stayed at The King's Head in 1651?**

The walk also brings us up to date with more recent developments, including the building of County Tower, completed in 1966, and the development of enclosed town centre shopping arcades. Packed with facts and interesting finds, the walk is an easy route that can be followed in about an hour. However, if the sun is shining and the weather is great, why not make a day of it by stopping off at the King's Head for lunch or the Bucks County Museum to see the latest exhibition.

The booklet to accompany the walk costs just £1 and can be purchased from the Tourist Information Centre in the King's Head Passage, Market Square, Aylesbury HP20 2RW.

Aylesbury Town Council encourages you to THINK LOCAL

There are many food producers in the Vale and in the wider area of Buckinghamshire. You will find good quality, high standards and great flavours throughout the region.

www.food-on-our-doorstep.org.uk
www.local-food.net




Aylesbury Town Council invites your comments and correspondence.

If you have thoughts about the town we'd like you to express them through this magazine. What do you think of the events that take place in the town centre? How do you feel about the town in general? Do you have fresh ideas? What bothers you? We'd like to know.

You can send an email marked 'ATM Letters' to:
info@aylesburytowncouncil.co.uk
or write to us at:

Aylesbury Town Matters Correspondence
Aylesbury Town Council, 5 Church Street
Aylesbury, Bucks. HP20 2QP

Tweet, Tweet! We're up to 900 twitter followers, Why not join in the fun? It's a great way to see what the Town Council is up to @aylesburytc 



Hire the Chamber

At the Town Hall, Aylesbury Town Council deliberates and discusses policy in the chamber. All full Council and Committee meetings are held here. When not in use during office hours, the Chamber is available to hire for meetings and presentations. There are facilities for refreshments and a projector is available if required.

All the information you will need, and the booking forms to complete, are available on our website (click the button on the home page) www.aylesburytowncouncil.gov.uk.

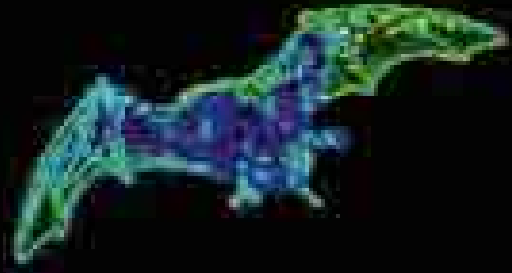
We have preferential rates for not-for-profit groups but the Chamber is also available to businesses and individuals.

If you require further information please enquire by telephone: **01296 425678** or email us at: info@aylesburytowncouncil.gov.uk

AYLESBURY TOWN COUNCIL

Villains of Aylesbury

(a walking play)



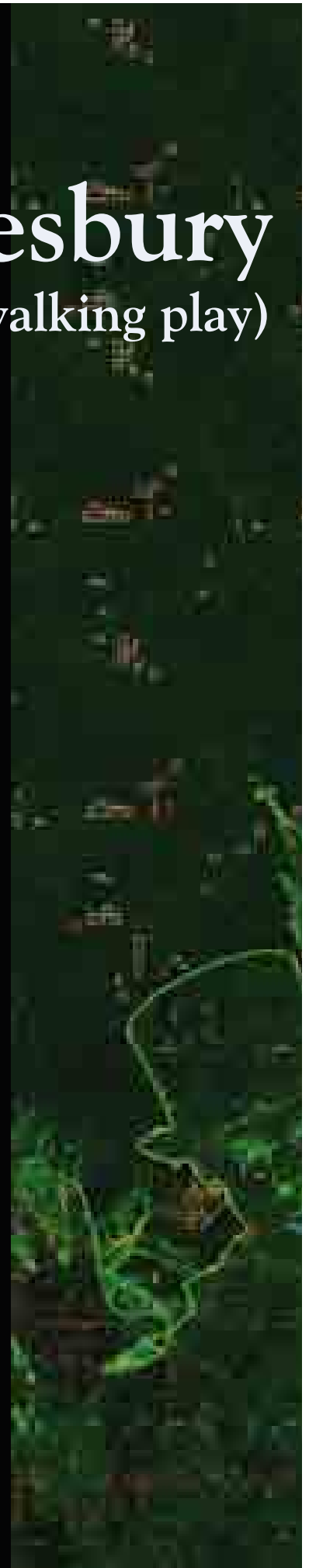
Saturday 9th &
Sunday 10th November 2013

6.00pm & 8.00pm

Tickets: £4.50

After a sellout run in 2012, "Gessi" once again returns to the streets of Aylesbury, taking you deeper than ever into the town's gruesome history. Walk with him as you meet the good, the bad and the plain ugly of Aylesbury's past.
(Formerly known as Ghouls and Villains).

Tickets available from:
Aylesbury Tourist Information Centre 01296 330559.



Christmas Fair & Carolfest



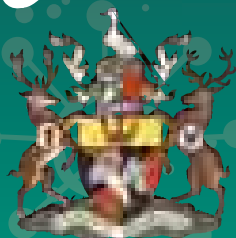
Sunday 15th December, Market Square

Christmas Fair 11am - 4pm

Carolfest 6pm - 7pm

Join us for a day filled with festive fun, music and entertainment. Then wrap up warm for an evening of your favourite carols in the picturesque Market Square.

www.aylesburytowncouncil.gov.uk





Britain in Bloom 2013