

# AYLESBURY TOWN matters

Aylesbury Town Council Magazine  
Issue Forty One • Published Quarterly  
June to August 2016



*Serving the people of Aylesbury*



**'Take pride in Aylesbury Town'**  
[www.aylesburytowncouncil.gov.uk](http://www.aylesburytowncouncil.gov.uk)



**AYLESBURY TOWN COUNCIL'S**

# SOAPBOX DERBY

**ON FATHER'S DAY SUNDAY 19 JUNE**

**11AM UNTIL 4PM**

**WHITEHILL PARK, SOAPBOX RACES  
AND FAMILY ENTERTAINMENT**



**MUST  
REGISTER BY  
FRIDAY 3RD JUNE  
TO PARTICIPATE**

**EMAIL  
INFO@AYLESBURYTOWNCOUNCIL.GOV.UK  
FOR INFORMATION AND REGISTRATION**

**FREE  
TO ENTER & WATCH!**



[www.aylesburytowncouncil.gov.uk](http://www.aylesburytowncouncil.gov.uk)

Tel: 01296 425678



## Contents

<b>ATC News &amp; Events</b>	
Soapbox Derby	2
Welcome Note	3
Summer Events	4 - 5
New Cemetery Opening Times	9
Riverside Park in the Quarrendon Ward	9
Town Hall Facilities	12
ATC Invites Your Comments	13
Ward Map	18
Council Services	19
Town Mayor's Update	20 - 21
Aylesbury on Sea	24
<b>Environment</b>	
Your River Needs You!	6
Aylesbury in Bloom Garden Competition	6 - 7
Clean for the Queen	8
<b>Community News &amp; Events</b>	
Age UK	10
Vale of Aylesbury Local Plan	10
Carers Bucks	11
Child Bereavement UK	11
The 'D' Word	12
Aylesbury Town Chaplaincy	12
Aylesbury Farmers' Market	13
Relay for Life and Purple Friday	13
Buckinghamshire Family Information Service	13
Active Vale	14
Macmillan Cancer Support	14
Mix 96 Tour de Vale Bike Ride	14
AVDC Bin Collection	14
<b>Aylesbury Town Council Grants</b>	
Community First Responders, CHAT and Multicultural Community Centre	15
<b>Art &amp; Leisure</b>	
Bucks County Museum	16
Roald Dahl Festival	16
Bucks Open Studios	17
MTC-Aylesbury	17
Access to Archaeology	17
<b>Schools</b>	
Stocklake Park and Harding House	22
Broughton Junior School	22
<b>Young People</b>	
Buckinghamshire Mind	23
Free Kids Thursday Events	23
E Company - Buckinghamshire (The Rifles)	23
Army Cadet Force	

## Welcome Note

📖 **Welcome to Issue 41 of our Aylesbury Town Matters magazine.** Summer is just around the corner and the keen gardeners amongst our readers are already pruning, mowing, weeding, planting and getting their outdoor spaces ready to enjoy. Some are even entering their gardens into our annual Aylesbury in Bloom garden competition. We had a record number of entries in 2015 and this year are hoping for even more. It doesn't matter how big or small your garden is, if it is a wildlife, pot or vegetable garden – anyone whose garden is in the parish of Aylesbury can enter. An entry form is on page 7.

Earlier on this year various community groups and organisations got involved with Clean for the Queen and collected over 200 bags of litter in different areas of Aylesbury. A big thank you to everyone who was involved and who helped spruce up our community.

By the time you will receive this issue, a new Town Mayor will have been elected by the Town Council. We will cover the Mayor making ceremony in our next issue, but we would like to use this opportunity to thank our current Town Mayor, Cllr Allison Harrison for all of her hard work and dedication. Allison has met many groups and people in Aylesbury, she has written about her last few months on pages 20 - 21.

The summer months will be busy with lots of great events planned. After the success of last year's Soapbox Derby we are pleased to say that your lean, mean racing machines will be back on Father's Day. Come and bring the family to Whitehill Park to watch the race and vote for the best looking kart. Then it is straight on to Aylesbury on Sea in July, where Giants of the Sea are taking over, including a 50ft whale. From there, we are off to Vale Park for Parklife weekend, which was a truly amazing event last year and which promises to be another great weekend this year.

We recently streamlined our opening and closing times at Tring Road Cemetery, which we have covered on page 9. If you are visiting a grave or regularly walk through the cemetery please familiarise yourself with the new times.

Can I take this opportunity to highlight the next consultation period for the Vale of Aylesbury Local Plan. As it is something that will affect us all we are encouraging as many residents as possible to take part in the consultation which runs from early July until 5th September. For more information please see page 10.

I wish you all a good summer and look forward to seeing many of you at our events. 📖

Best wishes

**Councillor Mike Smith**  
Leader of Aylesbury Town Council

Aylesbury Town Council is twinned with Bourg-en-Bresse.



## Contact Details

**Aylesbury Town Council**  
Town Hall  
5 Church Street  
Aylesbury  
Buckinghamshire  
HP20 2QP

Tel: **01296 425678**

Fax: 01296 426134

[@aylesburytc](https://twitter.com/aylesburytc) [aylesburytc](https://www.facebook.com/aylesburytc)

[info@aylesburytowncouncil.gov.uk](mailto:info@aylesburytowncouncil.gov.uk)  
[www.aylesburytowncouncil.gov.uk](http://www.aylesburytowncouncil.gov.uk)

*Photos throughout the magazine courtesy of Maurice Cousins, Russ Naylor, Swale Photography, Derek Pelling, Harmony Naylor, Bucks County Museum, Eloise Dunn, Hannah Neal and Sherron Razey.*

Printed by Bluepepper Designs  
[www.bpdesigns.co.uk](http://www.bpdesigns.co.uk)





## Summer Events

The first **FREE** family event of the Aylesbury Town Council event calendar, **ST GEORGE'S CELEBRATION** was a roaring success. This year also commemorated the 400th anniversary of William Shakespeare's death, so alongside many St George & the Dragon themed crafts, games, activities and entertainment, we also had unique performances of Romeo and Juliet meets The Hunger Games, which the crowd loved, especially the curse battle. Dancers from Spotlight Musical Theatre performed beautifully alongside the former harpist to HRH Prince of Wales, Jemima Phillips, whose repertoire on an electric harp ranged from Mozart to Metallica.

The **SOAPBOX DERBY RACE DAY** is fast approaching. The anticipation is building, as are the homemade karts across the town. Last year's event was fiercely contested with some lean, mean racing machines crossing the finish line in super quick time. If you haven't been lucky enough to secure one of the 30 places available to race on the day, there is still plenty of fun to be had in Whitehill Park – not only can you watch the racing but we also have inflatables, crafts, face painting, sumo suits and other activities to enjoy, all for **FREE**.

DJ Dan Blaze will be entertaining the crowd with music, if you need some refreshments The Works and their fabulous ice-cream bike will be in the park along with Just Baguettes and The Coffee Stop.

Alternatively bring your family and a picnic for a fun way to spend Father's Day. You will also get to vote for your favourite looking kart. Activities and races start at 11am, with the prize ceremony due to take place at approximately 3.30pm.



Enjoy a **GIANT FREE WEEKEND** in Aylesbury. On Saturday 2 July watch the Big Friendly Giant in the **ROALD DAHL PARADE**, then on Sunday 3 July some Giants of the Sea are swimming in, to join **AYLESBURY ON SEA**. Go inside a 50ft giant whale for underwater stories, marvel at the giant lobsters and slide on giant creatures of the deep. Plus all the fun and frolics you have come to know and love at our traditional Aylesbury on Sea, with donkey rides, brass band, magic shows – from the award winning Simon Says Magic, face painting, balloon modelling, arts, crafts, games and of course lots of sand and deckchairs! All this **FREE** fun takes place in Kingsbury from 11am - 4pm. You will find the whale in the museum gardens, (she is too big to beach anywhere else).

There will also be a team of scientists and bright sparks from Cambridge Hands-On Science (CHaOS) demonstrating, interactive science experiments as part of the Crash, Bang, Squelch roadshow. You can find the Cambridge University scientists in Market Square during Aylesbury on Sea.

The biggest of this summer's events will see two full days of **FREE** live music, activities, sports, fun fairs and inflatables at **PARKLIFE WEEKEND** in Vale Park over the late August bank holiday weekend.

### LIVE IN THE PARK

**Saturday 27 August from 12 noon until 9.30pm**

Vale Park will be filled with great live music, all day on the huge outdoor stage, showcasing 13 local bands and acoustic acts including Lost Minute, James & Jack Manders, Evette Judge, Bustin' Loose and headlined by the fabulous SkaSouls UK. This great day out, for all ages, is enhanced with free traditional fun-fair rides, inflatables, and the introduction of a Community Involvement Area where you will be able to have a go at a wide range of games, crafts and activities from a





number of local businesses, charities and organisations – also all for **FREE**. You can bring a picnic or take your pick from a range of local catering stalls, bars, hot fresh coffee and refreshments. Please note that for safety reasons glass is not permitted at this event.

From 10.15pm until 11.30pm you can join the experts from UK Astronomy to marvel and gaze at the night sky. There will be experts and equipment available for you to learn more about the solar system and wider galaxy in which we live.

**CHURCH IN THE PARK**

**Sunday 28 August 10.30am until 12 noon**

Aylesbury Church Network host an open air church service for the entire community, bringing together many denominations from across the town for a morning of joint worship.

**FOOTIE AND FUN IN THE PARK**

**Sunday 28 August 12 noon until 4pm**

This year the annual Church Network Fun Day takes a different format. The emphasis is on youth and young adults with a five-a-side football tournament, other sports, games and live bands on stage. For more information and the opportunity to register please contact Peter Agoro [pagoro9@gmail.com](mailto:pagoro9@gmail.com)

**PROMS IN THE PARK**

**Sunday 28 August, arrive with picnics from 6.30pm, concert starts at 7.15pm with fireworks at 9.30pm**

Aylesbury Concert Band with soloists Alison Langer and Lawrence Thackery will delight you at this typically English outdoor concert. Bring your Union Jack flags, rugs, picnics, friends and family to enjoy the mix of traditional and contemporary arrangements. This year's programme includes a celebration of the Phizz-Whizzing author, Roald Dahl, as well as many other well known classic and modern tunes. The evening and entire Parklife weekend will culminate in a brilliant firework display at approximately 9.30pm.

The ATC stand at the **BUCKS COUNTY SHOW**, on Thursday 1 September, is a great place to call by for information about everything we do – including events, the garden competition, allotments, devolved services, cemetery, mayoral, twinning association and grants. Also available will be live music, face painting and crafts as well as a hot cuppa, a biscuit and a seat. We hope to see you there.

*If you would like to take part, volunteer or comment in anyway about any of our events across the year, please email [r.mayhew@aylesburytowncouncil.gov.uk](mailto:r.mayhew@aylesburytowncouncil.gov.uk), your comments are always welcome.*

*Like us on Facebook and "subscribe" to our events to keep right up to date with all of the latest news and developments at all of our events.*

 [www.facebook.com/aylesburytc](http://www.facebook.com/aylesburytc)







## Your River Needs You!



**Would you like to learn more about your local river and its wildlife?** Do you have a small amount of free time each month, ranging from 10 minutes to a few hours? Have you always wanted to volunteer but weren't sure where to start? Would you like to be part of a group that makes a real difference to the way that we see and treat our local rivers?

If you have answered yes to any of these questions, then we would love for you to get in touch. The River Thames Conservation Trust is a small charity, founded by a group of local people in 2012. You can read more about the Trust and

what we do on the website [www.riverthame.org](http://www.riverthame.org). We are desperately seeking volunteers who would like to help us collect information about our local river, this information can range from taking a quick water sample once a month to surveying for birds, insects, mammals or even recording the habitat. We will provide full training and support to all volunteers, we will also endeavour to show you how the information that you collect is being used.

We need to learn more about this incredible river to help us plan our future work and ensure its long-term protection; but we can't do this alone, please call or send an email to **Emily Godfrey** (Project Officer) if you have any questions or would like to sign up email: [emily@riverthame.org](mailto:emily@riverthame.org) mobile: **07413 936048**

**AYLESBURY**  
*in BLOOM*  
2016

**Annual Garden Competition 2016!**

*Get recognised for your efforts in the garden with our annual Garden Competition*

Free to enter, the competition is open to all residents in the Parish of Aylesbury Town.

All you have to do is complete the application form opposite and return it to Aylesbury Town Council offices in 5 Church Street. Alternatively call **01296 425678** or email: [info@aylesburytowncouncil.gov.uk](mailto:info@aylesburytowncouncil.gov.uk)

Judging will take place in June, July and August. For more details including Terms & Conditions and Judging Criteria please visit our website.

[www.aylesburytowncouncil.gov.uk](http://www.aylesburytowncouncil.gov.uk)  
01296 425678

## Aylesbury in Bloom Garden Competition

The annual garden competition is now open for entries from residents, schools, organisations and businesses in the parish of Aylesbury Town.

Some entries have already come back and it promises to be an exciting year again.

If you are still thinking about entering or haven't sent through your application form, please complete the form on the facing page and return to the offices at Town Hall or via email.

You can choose which categories you wish to enter and also during which month (June, July, August) you would like the judging to take place.

Categories include:

- Best Front Garden
- Best Back Garden
- Best Edible Garden
- Best Wildlife/Nature Garden
- Best Container Garden
- Best Young Gardener

Participants can choose to enter multiple categories and with such a wide variety there is something for everyone's garden. For more information on judging criteria please visit our website.

e: [info@aylesburytowncouncil.gov.uk](mailto:info@aylesburytowncouncil.gov.uk)



## GARDEN COMPETITION 2016

For Residents, Schools, Businesses and Organisations in the Parish of Aylesbury Town.  
**Entries Close 17 June**, judging will take place during June, July & August 2016

Contact Name: \_\_\_\_\_

School/Organisation: \_\_\_\_\_

Phone: \_\_\_\_\_ Mobile: \_\_\_\_\_

E-mail: \_\_\_\_\_

Address: \_\_\_\_\_

\_\_\_\_\_

Town: \_\_\_\_\_ Postcode: \_\_\_\_\_

I am a Resident  School  Organisation/Business

### Categories

*Please tick the categories you wish to enter (multiple categories can be chosen)*

For more details of the criteria for each category, please visit  
[www.aylesburytowncouncil.gov.uk](http://www.aylesburytowncouncil.gov.uk) or contact the office on 01296 425 678

#### Residents

- Best Front Garden
- Best Back Garden
- Best Edible Garden
- Best Wildlife/Nature Garden
- Best Container Garden
- Best Young Gardener

#### Schools

- Best Edible Garden
- Best Wildlife/Nature Garden
- Best Recreational/Learning Garden
- Best Garden in a Pot

#### Organisation/Business

- Best Commercial Planting/Premises
- Best Communal Garden

Preferred Month for your garden to be judged? June  July  August

Please return the completed form by 17 June 2016 to Aylesbury In Bloom,  
 Aylesbury Town Council, Town Hall, 5 Church Street, Aylesbury HP20 2QP or email  
 completed forms to [j.priest@aylesburytowncouncil.gov.uk](mailto:j.priest@aylesburytowncouncil.gov.uk) (scanned forms are acceptable).





## CLEAN FOR THE QUEEN

### Clean for the Queen a great success



During March and April various community groups, organisations and schools took part in the "Clean For The Queen" campaign; a National initiative to clear up the streets, parks and hedgerows of Britain in time for Her Majesty the Queen's 90th birthday. Food packaging, plastic bottles, takeaway meals, cigarette butts and many more discarded items all contribute to a growing menace that affects our wildlife, streets, countryside and sense of pride.

Aylesbury Town Council in partnership with Aylesbury Vale District Council and Vale of Aylesbury Housing Trust coordinated litter picking groups from across the community who cleared the streets and pavements around their homes and schools. Suitable equipment was provided and bag collections arranged to make it as easy as possible for lots of groups to take part.

Pupils from Thomas Hickman School and Bearbrook School together with staff from Vale of Aylesbury Housing Trust collected 92 bags full of litter between them alone.

Aylesbury Lions, Aylesbury Town WI, Rotary Club of Aylesbury Hundreds, Haydon Hill Community Association, Aylesbury High School, 1st Aylesbury Scout Group, Vineyard Church, Town Councillors and McDonald's High Street and Drive Thru all took part and more than 200 bags of street litter were collected around the Parish of Aylesbury Town.

Nationwide a massive 300,000 bags of rubbish, containing enough litter to stretch from Land's End to John O'Groats were collected by thousands of volunteers.

We will continue to run this campaign throughout the year so if you are still interested in taking part and looking to make a difference to your community than get in touch with us on **01296 425678** and ask for the Communities Officer.

You can either take part with a group, your neighbours or even as an individual. Everyone can make a difference by picking up litter.

**Of course the message in the first instance is "Please put your litter in bins provided or take it home with you".**





## New Cemetery Opening Times

At the recent Town Council's Direct Services meeting, the committee agreed to streamline the current opening and closing times of Tring Road Cemetery. Closing times varied from month to month, which made it difficult to remember. As of 27 March there are two different closing times and there is no longer a distinction between weekends, weekdays and Bank Holidays.

Cllr Stuart Jarvis, Chairman of the committee said: *"The new opening and closing times ensure that the times are easy to remember and that there can't be any confusion. We regularly receive calls from members of the public checking what the closing time is each day."*

**As of 27 March 2016 the opening and closing times are:**

### MONDAY THROUGH TO SUNDAY

#### WINTER

08.00 to 16.00 GMT  
(last Sunday in October to last Saturday in March)

#### SUMMER

08.00 to 20.00 BST  
(last Sunday in March to last Saturday in October)



## Riverside Park in the Quarrendon Ward

Riverside Park is fast becoming my Jewel in the Crown. It is known as "The White Path" or "Riverside Walk" to many locals who are aware of its existence but to many others it remains a secret. Riverside Park covers nearly 20 hectares alongside the River Thames, from Haydon Hill to Buckingham Park, in the northern part of Aylesbury. The park contains many facilities including sports and children's play areas.

Over the years many wild flowers have been planted, with more to come, and, more recently, extensive clearance works have improved views across the park in all directions and encouraged the growth of new vegetation. It is there for all to come and see. Resurfacing has meant that it is friendly to all such as runners, walkers and dogs.

Recently I spoke to the Community Spaces Project Officer at AVDC and he told me that further improvements are envisaged which includes picnic areas, more benches and improved signage.

Aylesbury's Parkruns are becoming a feature and take place every weekend in Riverside Park, with an adult 5km run on Saturday and a junior 2km event on Sunday. Volunteer marshals are on hand to ensure runners' safety and also to give encouragement. To find out more and sign up visit [www.parkrun.org.uk](http://www.parkrun.org.uk).

It is on my council patch, so I suppose I am biased, but I am out in the park on a regular basis and I urge you to do the same. Free exercise is of benefit to both the waistline and pocket.

Cllr Andy Huxley

# Community News & Events



**Are you involved in a local community group or charity in Aylesbury?  
Would you like to promote your work and events?**

This magazine is delivered to every household in the Parish of Aylesbury. For more information call Judith on **01296 425678** or email: [j.priest@aylesburytowncouncil.gov.uk](mailto:j.priest@aylesburytowncouncil.gov.uk)  
There is no charge for community groups and charities.

Looking to volunteer?



## The rewards of being a Befriending Volunteer



Often the best way to find out how well a service works is to speak to the people who receive it.

The following is the experience of an Age UK Buckinghamshire client, Dorothea, and our Befriending Plus volunteer, Mary.

Dorothea is 91 years old living in the county and is a former town mayor. She has been visited by Befriender Mary every Wednesday since July 2015. Over that time the two ladies have become firm friends.

Dorothea has always been an independent lady but sadly arthritis prevents her from playing bridge, which was her most favourite hobby. Many of her friends and relatives had passed away and, whilst she was lucky to have close contact with her children, seeing them on a regular basis, she still found life was very lonely.

Meanwhile, Mary found a huge gap in her life after her husband passed away, so volunteered as a befriender to carers where she was then living in Greenwich.

Dorothea is very independent and was initially sceptical about inviting a stranger into her house, but once she met Mary, it didn't take long for the two ladies to realise they had lots in common and it became very much a two-way relationship. Dorothea says: *"Mary has filled a gap in my life where my friends used to be and I get a lot of pleasure out of seeing her. We're like two peas in a pod and can talk for England!"*

For more information about Befriending see our website: [www.ageukbucks.org.uk](http://www.ageukbucks.org.uk) or tel: **01296 431911** or email: [age@ageukbucks.org.uk](mailto:age@ageukbucks.org.uk)



## Vale of Aylesbury Local Plan

The new local plan for Aylesbury Vale district will detail how new homes and jobs should be distributed across the district and what new policies could be introduced to manage development between now and 2033. At least 31,000 new homes are thought to be needed between now and 2033.

The second stage of public consultation at the end of last year included nine potential options for distributing new development, including developing urban extensions at Milton Keynes/Bletchley; using land more efficiently by raising the average density of new development; creating a whole new settlement somewhere in the Vale; and a combination of these. There were over 750 people who responded and a total of almost 5,000 comments left for planners to analyse.

The next consultation period is expected to take place over an eight week period from early July, ending on 5 September 2016. This will include public exhibitions across the district including Play in the Park, in Vale Park on Wednesday 3 August and Bucks County Show on Thursday 1 September, when residents and the general public are invited to give their views.

Closing date for comments is Monday 5 September.

Once consultation feedback is analysed, the final plan will be compiled and submitted for assessment by an independent inspector in spring 2017. Once approved we expect it to be adopted by summer 2017.

For more information please visit [www.aylesburyvaledc.gov.uk/valp](http://www.aylesburyvaledc.gov.uk/valp)

Don't forget to make a note in your diary of our Soapbox Derby and Aylesbury on Sea events. See the posters on the inside front and back covers.





## Dedicated to Supporting Carers

If you are looking after someone who can't manage without you because they are ill, frail or have a disability, then you are a carer and Carers Bucks can help you.

There are over 52,000 unpaid adult carers living in Buckinghamshire, playing a vital role in providing care and support to family and friends, as well as making an enormous economic contribution to society.

Carers Bucks supports unpaid carers of all ages from 6 – 96 years old in Bucks, providing regular support groups, help with knowing your rights and entitlements as a carer, emergency planning, guidance on health and social care services, plus a number of other services to support the health and wellbeing of carers.

The Young Carers team supports young carers from the age of 6 – 18 years old through regular clubs, activities and one-to-one support.

If you would like to find out more information about how Carers Bucks could help you contact **0300 777 2722** (local rate) or email **mail@carersbucks.org**



## Fancy a Challenge?

On 16 and 17 July, Cllr Mark Willis and a team from Carers Bucks will be taking part in the Race to the Stones challenge to help raise money for Young Carers Bucks. Race to the Stones is a two day event covering 100k along The Ridgeway, Britain's oldest road (**www.racetothestones.com**). The team will be raising money to support Young Carers living in Bucks.

If you would like to join the team on this fantastic challenge or make a donation to support young carers, then contact Sandy Briscoe on **0300 777 2722**, or visit **www.carersbucks.org**



## NEW Drop-in Service for Bereaved Families in Aylesbury

Buckinghamshire based charity, Child Bereavement UK, is offering free bereavement support to local families, by hosting monthly drop-in sessions at Children's Centres across Aylesbury.

Child Bereavement UK supports families and educates professionals when a baby or child of any age dies or is dying, or when a child is facing bereavement.



*Gillian Harrison, Child Bereavement UK, offering bereavement sessions in Aylesbury*

The drop-in sessions are open to parents, carers or anyone supporting a bereaved child, as well as parents who have been bereaved of a child. A Child Bereavement UK Bereavement Support Practitioner will be on hand at each session to offer information and guidance.

A need for more localised support in the Aylesbury area was recognised due to the number of referrals received by the charity, which also operates direct services in Milton Keynes and Saunderton.

Gillian Harrison, Buckinghamshire Bereavement Services Team Leader for Child Bereavement UK said:

*"Last year we provided face-to-face support to 37 bereaved children, young people and their parents in Aylesbury. In the feedback we received, many families described the support they had received as a lifeline. Once we had identified this need for bereavement support we wanted to be able to extend our services to reach out to many more families seeking support and information after the devastation of child bereavement."*

To find out more information or to book an appointment please visit: **www.childbereavementuk.org/support**

Alternatively please call our Support & Information line on **0800 02 888 40** if you would like to speak to someone sooner.

# Community News & Events

## The 'D' Word

Imagine the daunting feeling of being told that your ageing parent has dementia. Thoughts and smells of care homes swamped my mind, and all of a sudden you realise how mortal we actually are.

After diagnosis and a prescription of some tablets, a medical team hand you a file of 'useful' literature which you gratefully accept – but, still you are in shock. Are they sure they got the correct diagnosis?

As with any 'crisis' in life we all tend to play to our strengths, and that is exactly what I did. Books and websites became the way I chose to educate myself about this devil of a disease. But I found very quickly that this was not the best way that I could support my ageing parent.

So, I decided to do what I do best and talk to someone. It took courage, but it's probably the best thing that I ever did as we embarked on this journey together. The local support services in the community were somewhat sparse, but I did not give up.

Dementia has taught me one thing – the most, and only important thing I can tell anyone about the dementia journey is to stay in your loved ones' 'world'. When you are with them – forget everything and everyone. It's them that matters and only them.

Finding my local **Alzheimer's** organisation helped. It made me feel like there was a support system and through them, I spring-boarded myself into engaging in the best way to support my ageing father.

I am a parent in the 'sandwich-years' – looking after an elderly parent in addition to a young family. That's a challenge in itself.

**Dementia Friends** has been a light at the end of a very long tunnel. I booked myself on to a local course through their website [www.dementiafriends.org.uk](http://www.dementiafriends.org.uk) and undertook the hour-long workshop where I met and spoke with people who face the same challenges looking after their loved one.

Funnily enough, I realised, I was already doing it. I am caring for my father, but that's not because of dementia. It's because I cherish him. Now I have found that I enjoy my father more than I ever could; and I cherish every moment. Life is for taking pictures – that's my mantra. You don't get that reading a book, you get that feeling by being with your loved one.

Dementia Friends has taught me to enjoy life and have no regrets. And if I have the opportunity to pass that message onto someone else on this journey – then I'll be signing from the rooftops.

That's why I am a Dementia Friend



Some exciting new developments over the past few months. In the daytime, we now have a volunteer Chaplain place in Morrisons Aylesbury. Edna is available for staff and customers as a listening ear, but also a support and encouragement to all who work or visit the store. She's there for a couple of hours every Thursday. We'll also soon have a Chaplain placed and supporting all those in Bucks County Council's main office in Aylesbury. We're so pleased that we're able to work with these, and other organisations, to provide support and encouragement to the people who work and visit these places.



At night we've started using a van once a month when our Street Angels are out. One team of Street Angels stays near to the van and provides practical help to those who need it. People can be cared for there, or come and collect flip flops, or just wait for a lift or with their friends. A second team goes out around the town as usual. They can stay in contact with each other via a dedicated 'phone which was funded by our recent grant from Aylesbury Town Council.

We're grateful for support from our other partners, at Aylesbury Vale Youth for Christ, Aylesbury Town Centre Partnership and Thames Valley Police for helping to make this happen.

More about all of this at twitter [@AylesburySA](https://twitter.com/AylesburySA) or [www.aylesburytownchaplaincy.co.uk](http://www.aylesburytownchaplaincy.co.uk)

## Looking for meeting room hire?

### Town Hall Facilities

The Town Council hires out the Council Chamber for meetings and other similar events, full details can be found here: [www.aylesburytowncouncil.gov.uk/the-chamber](http://www.aylesburytowncouncil.gov.uk/the-chamber). To check availability of the Council Chamber please contact the Town Council on **01296 425678**.





## Aylesbury Farmers' Market

Aylesbury Market Square hosts a range of local producers at the Farmers' Market on the last Tuesday of every month, from 9am until 2pm. Find local cakes, fruit and vegetables, honey and preserves, home-made ready meals, pies, bread and much more.

The Farmers' Market runs in the lower Market Square while the weekly Tuesday Vintage & Craft Bazaar runs in the upper Market Square – why not come along and browse the stalls at both?



## Relay for Life & Purple Friday

Relay for Life Aylesbury 2016 will take place for 24 hours from 12 noon on 2 July, with 22 teams already registered to take part!

During the 24 hour relay teams have to keep at least one member on the walking track at Aylesbury Rugby Club, day and night. In 2015 the event raised a staggering £108,538.47 for Cancer Research UK.

Purple Friday 2016 will take place on 24 June when schools, businesses and individuals dress in purple and pay for the privilege.

*"Relay honours those who have lost their lives to cancer, celebrates the lives of survivors, raises money to help fund ground-breaking research and, most importantly, is fun"* says Committee Chair Paula Kirby.

For more details see [www.relayforlifeaylesbury.org](http://www.relayforlifeaylesbury.org)

 [www.facebook.com/aylesburytc](http://www.facebook.com/aylesburytc)

Looking for information, advice or support for you and your family?

## Buckinghamshire Family Information Service

The Buckinghamshire Family Information Service (BFIS) is a free and impartial information service dedicated to helping children and young people aged 0 - 19 (or up to 25 for people with a disability), in addition to parents, carers and professionals working with families.

We provide information on all sorts of topics relating to family life such as child care and early years, Children's Centres, family related activities, events, leisure and services across Buckinghamshire, including Early Help and the Special Educational Needs and Disabilities Local Offer.

Our service is accessible by phone, website, social media, text, email and in person.

We look forward to you contacting us on **01296 383065** or via [www.bucksfamilyinfo.org](http://www.bucksfamilyinfo.org)

ATC invites your comments and correspondence... we'd love to hear from you!



If you have thoughts about the town we'd like you to express them through this magazine.

What do you think of the events that take place in the town centre? How do you feel about the town in general? Do you have fresh ideas? What bothers you? We'd like to know.

You can send an email marked 'ATM Letters' to: [info@aylesburytowncouncil.co.uk](mailto:info@aylesburytowncouncil.co.uk) or write to us at: **Aylesbury Town Council, Town Hall, 5 Church Street, Aylesbury, Bucks HP20 2QP.**

Please do give us your name and contact details so that we can reply to you.

Keep up-to-date with local news and events by visiting our website or following us on twitter & facebook

# Community News & Events



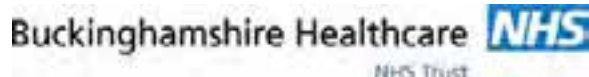
The exciting new Active Vale initiative is now in full swing, with lots of fresh opportunities to help you have fun while getting fit!

Nordic Walking got started this month, following in the footsteps of other activities happening in and around Aylesbury. These include Swim Fit, Lunchtime HIIT sessions (high-intensity gym workout), and beginner swimming lessons for girls and ladies.

There have also been taster gym sessions giving ladies the confidence to dabble in a variety of different gym classes to experience which class they like the best.

Active Vale is run by Aylesbury Vale District Council with support from Sport England and local partners.

Active Vale Activities continue through the year, with more being introduced regularly, so to find something that suits you and your lifestyle, visit [www.aylesburyvaledc.gov.uk/active-vale](http://www.aylesburyvaledc.gov.uk/active-vale). Although you are encouraged to register your interest in participating, and there are block booking discounts for some classes, you're welcome to just turn up to many of the sessions.



**Does cancer affect you? Are you a cancer patient, friend/relative or carer?**

A Health and Wellbeing Information Day for all  
Wednesday 22 June 2016, 9am – 4.45pm,  
The Gateway (AVDC), Gatehouse Road,  
Aylesbury HP19 8FF

Visit information stands and join talks given by cancer health experts, including: GP referrals and screening, diagnosis and overview of treatment, exercise and diet, emotional and psychological wellbeing, financial issues and carers support. Refreshments/lunch will be provided.

If you would like to attend and book a place or receive further information, please contact the cancer education, information and support team on **01296 316537/6954**.



## Mix 96 Tour de Vale Bike Ride

**SUNDAY 26 JUNE 2016**

**Buckinghamshire's biggest and best bike ride is back with three glorious routes starting and finishing at Stoke Mandeville Stadium.**

Touring the scenic countryside, each route is fully signed and there are marshals, mechanics and support vehicles for your safety. Volunteers at water stops look forward to giving you a friendly welcome and there are refreshments and changing facilities at the start and finish. With the 2,000 available places filling up fast, cyclists are urged to enter soon to avoid disappointment.

Organised by WheelPower, your local charity helping disabled people access sport, every penny raised will help transform lives. The routes include:

- 100k advanced ride for experienced cyclists from 9am
- 60k challenge ride with a few steep hills from 10am
- 25k fun ride for all of the family from 10.30am

Adults £15 and U16 free with an accompanying adult. Every rider is given chip timing. Helmets are compulsory. Sign up **online [www.tourdevale.com](http://www.tourdevale.com)** or call **01296 395995**.



**AVDC bin collection days are changing from 7 June**



This means what bin is collected in a week may change too. Look out for a letter from AVDC in late May with all the details of how you are affected.\*

\* Except those using communal bins



# Aylesbury Town Council Grants

If you are involved in a charitable or voluntary organisation in Aylesbury you could apply for a match funded grant from Aylesbury Town Council. Grants can be awarded to support a project, event or service. We are also keen to support young people in sport. Sports Grants are available to help outstanding individuals fulfil their sporting potential. **To find out more visit our website or call 01296 425678.**

## Community First Responders

The new Aylesbury area response car has just come into service. The car will be shared amongst the local CFR group and has already become a familiar site attending emergency calls on the streets of Aylesbury and surrounding villages.

Each CFR is equipped with a full emergency intervention kit that includes oxygen therapy equipment and a defibrillator for use in cardiac arrest situations.

Peter Cooper, a CFR and local coordinator said, *"I would like to send a big thank you to Aylesbury Town Council and the very generous people of Aylesbury for being so supportive of this important service."*



## CHAT

Along with funding short term respite care breaks for families in Buckinghamshire with children who have ongoing health needs, CHAT is also supporting Booker Park School by funding new toys and equipment for outdoor play. The Town Council grant is gratefully received and will enable us to provide four new wooden outdoor toys for Booker Park School.

The grant will also enable CHAT to be able to fund short term respite care for two families in Buckinghamshire who have children with ongoing health needs such as Global Development Delay, Autism and Cerebral Palsy.



## Multicultural Community Centre

The Multicultural Community Centre has been in existence for over thirty years. The Centre is hired out to various regular users such as a dance school, Tai-chi and Zumba classes and also runs its own projects such as two elderly lunch groups and a youth programme which has extended to include a music project called Culture Sounds who have full use of the recording studio.

This year they are also planning to start a new initiative in partnership with Aylesbury College, called the Gateway Project. This project is an adult learning programme for individuals on benefits who find themselves caught in a poverty trap with no obvious means of improving their lives. The part-time course will be free and won't affect benefit claims. The aim of the course is to equip individuals with the basic Maths and English skills to satisfy the entry criteria to go on to further/higher education or vocational training at Aylesbury College.



**Should you wish to apply for a grant please contact our Grants Officer, Belle Daytonn on 01296 425678 or if you prefer email: [b.daytonn@aylesburytowncouncil.gov.uk](mailto:b.daytonn@aylesburytowncouncil.gov.uk)**

## Bucks County Museum Events

Come and join the Art of Islam Festival at Bucks County Museum, Aylesbury



As well as the stunning exhibition of **Islamic art** at the County Museum there is also an exciting programme of events running until 24 September. With talks, workshops and family activities this is a wonderful opportunity

to learn about the art of Islam. Artistic workshops include Arabesque design (6 August) and stained glass (30 August).

On Saturday 9 July is the **Eid Festival Focus**, a free day event for all ages, including games, demonstrations, art for youngsters and students, good food and lots of fun. On 11 August the **Arfaan Shezad Shadow Puppet Theatre** will be visiting and on the 17 August don't miss **Curry On** Halima's cookery demonstration and tasting.

### Discover Roald Dahl's Buckinghamshire

Buckinghamshire has had a great influence on Roald Dahl as a writer. Discover his connections to the county and its inspiration for many of his famous children's books and his short stories for adults. This is a special exhibition celebrating the 100th anniversary of Roald Dahl's birth.

The exhibition opens on 2 July, the day of the Roald Dahl Festival in Aylesbury town centre, and runs until 7 January 2017.



There is also a marvellous summer of Roald Dahl activities running Monday to Friday from 25 July to 26 August with a different wondercrump theme each day including James's Giant Insects, Fantastic Mr Fox masks and BFG Dream Bottles. Drop in between 10am and 12 noon or 1pm and 3pm. £3 per child. No need to book. Children under 12 must be accompanied by an adult.

These are just a few of the festival events. To find out about ticket prices, booking and all other events please visit [www.buckscountymuseum.org](http://www.buckscountymuseum.org) or call **01296 331441**.

Bucks County Museum and Roald Dahl Children's Gallery, Church Street, Aylesbury HP20 2QP

## Roald Dahl Festival

On Saturday 2 July be part of the annual community event bringing together over 1,000 school children with an audience of thousands to celebrate the imagination and work of Roald Dahl.

For 2016 the spectacular Roald Dahl Festival will pack the town centre full of fabulous colour, noise, activities and entertainment for all the family, to mark 100 years since the author's birth. This year's theme is The BFG and visitors will see larger-than-life puppets and colourful artwork, made by local children and young people, parade through the streets, starting at St Mary's Church.

Boisterous samba and brass bands and street entertainers will add to the festival atmosphere. There will be a designated viewing area for wheelchair users at the top of Market Square.

Visit [www.aylesburyvaledc.gov.uk/roald-dahl-festival](http://www.aylesburyvaledc.gov.uk/roald-dahl-festival) to find out more about the parade and other exciting activities, whatever the weather, at Aylesbury's biggest community arts event.





## Record number of Entries for 2016 Bucks Open Studios

Bucks Open Studios, the largest visual arts event in Buckinghamshire, has announced that its 2016 event will be its biggest to date following a record number of entries from artists and makers across the county.



Kate Wilkinson

The annual art event, which is also one of the biggest in the country, will include a record-breaking 323 entries made by over 500 artists including glass workers, ceramicists, jewellery makers, photographers, painters and print makers. The event will take place 11 - 26 June

2016 and will see the participants opening their studios to the public for free demos, workshops and exhibitions.

Bucks Open Studios organisers, Bob and Ann Marshall explain: *"We are absolutely thrilled to announce that this is going to be our biggest year so far. Entries from artists and groups across the county flooded in and we are delighted to welcome both our new creative talent as well as artists and makers who have been doing the event for many years."*

*"We also have a great spread of talent across all disciplines and geographical locations which is all fantastic news for our visitors. This is a great endorsement of the popularity and professionalism of the event and we hope to top the 48,000 visits from members of the public at our 2015 event. It's never too early to start planning your visits and you can see participating artists and locations on our website [www.bucksopenstudios.org.uk](http://www.bucksopenstudios.org.uk) You can also look out for the directories from early May which are available for free from libraries, art centres and galleries, and the yellow signs that start popping up from early June."*



MTC-Aylesbury is a choir rehearsing in Aylesbury on a weekly basis (term time), which focuses on songs and techniques from musical theatre. We have had a vibrant and successful first year singing songs from a wide variety of musical theatre from Carousel to Rent. In March we were asked to perform at a charity cabaret evening at Theatre On The Hill in Amersham, raising money and awareness for Motor Neurone Disease Association. The evening was a huge success and for our first performance we sung A New World to a full house.

MTC-Aylesbury is proud to announce that we will be hosting a one-off summer singing workshop for adults aged 16 and above. The workshop will be run by MTC-Aylesbury founder and Musical Director, Ashley Turner, who will be joined by guest Musical Director and professional theatre performer, Jemma Harris.

During the workshop participants will explore and learn singing and performance technique, all resulting in an informal sharing of the day's work to invited friends and family. Ashley and Jemma will lead participants in a relaxed and supportive environment; there'll be plenty of laughter no doubt! There is limited availability, so book now to avoid disappointment!

**30 July 2016, 10am - 4pm**  
**Queens Park Arts Centre, Aylesbury**  
**£45/£40 (MTC-Aylesbury members)**

To book your place contact MTC-Aylesbury  
 E: [musicaltheatrechoir@gmail.com](mailto:musicaltheatrechoir@gmail.com)  
 T: 07969 104275

[www.mtcaylesbury.wix.com/mtcaylesbury](http://www.mtcaylesbury.wix.com/mtcaylesbury)  
 or send us a message on Facebook or Twitter  
 #singing #whysouldkidshaveallthefunatsummer

## Access to Archaeology

Access to Archaeology are dedicated to making archaeology accessible and available to anyone with an interest in finding out about our rich history. We run inclusive and accessible workshops to provide a tailored and enjoyable experience for all. We think archaeology should be available to everyone regardless of the disabilities or challenges they face in life. Do you want to learn more about how our ancestors lived? Or make a replica artefact? How about exploring the past through interesting recipes? Well now is your chance. So if you are interested in the Stone Age, Romans, Vikings, Tudors or any other period in our past, why not contact us today! We run wonderful workshops, talks, fairs and even arrange fantastic parties. Contact us now to start your adventure into the past. Email Victoria on [info@accesstoarchaeology.co.uk](mailto:info@accesstoarchaeology.co.uk)



# Aylesbury Town Council Ward Map

## Ward: Gatehouse



Cllr Anders Christensen  
07834 995690



Cllr Tuffail Hussain  
07832 913171



Cllr Graham Moore  
07886 369565

## Ward: Central



Cllr Barbara Russel  
01296 431314



Cllr Edward Sims  
07580 703275

## Ward: Elmhurst



Cllr Susan Morgan  
07799 074411



Cllr Jenny Puddefoot  
01296 612461

## Ward: Coppice Way



Cllr Mark White  
07447 907798

## Ward: Oakfield



Cllr Allison Harrison  
07795 210808



Cllr Mark Willis  
07723 091637

## Ward: Quarrendon



Cllr Chris Adams  
07968 444222



Cllr Andy Huxley  
07711 837938

## Ward: Oxford Road



Cllr Stuart Jarvis  
07958 083519



Cllr Mike Smith  
07854 178012

## Ward: Southcourt



Cllr Peter Agoro  
07548 952762



Cllr Mark Bateman  
07858 973643

## Ward: Walton Court



Cllr Ranjula Takodra MBE  
07958 423083

## Ward: Hawkslade



Cllr Brian Adams  
07855 299999

## Ward: Walton



Cllr Bill Chapple OBE  
07702 031712

## Ward: Mandeville & Elm Farm



Cllr Sue Chapple  
01296 426814



Cllr Richard Lloyd  
07887 685345



Cllr Denise Summers  
01296 424903

## Ward: Bedgrove



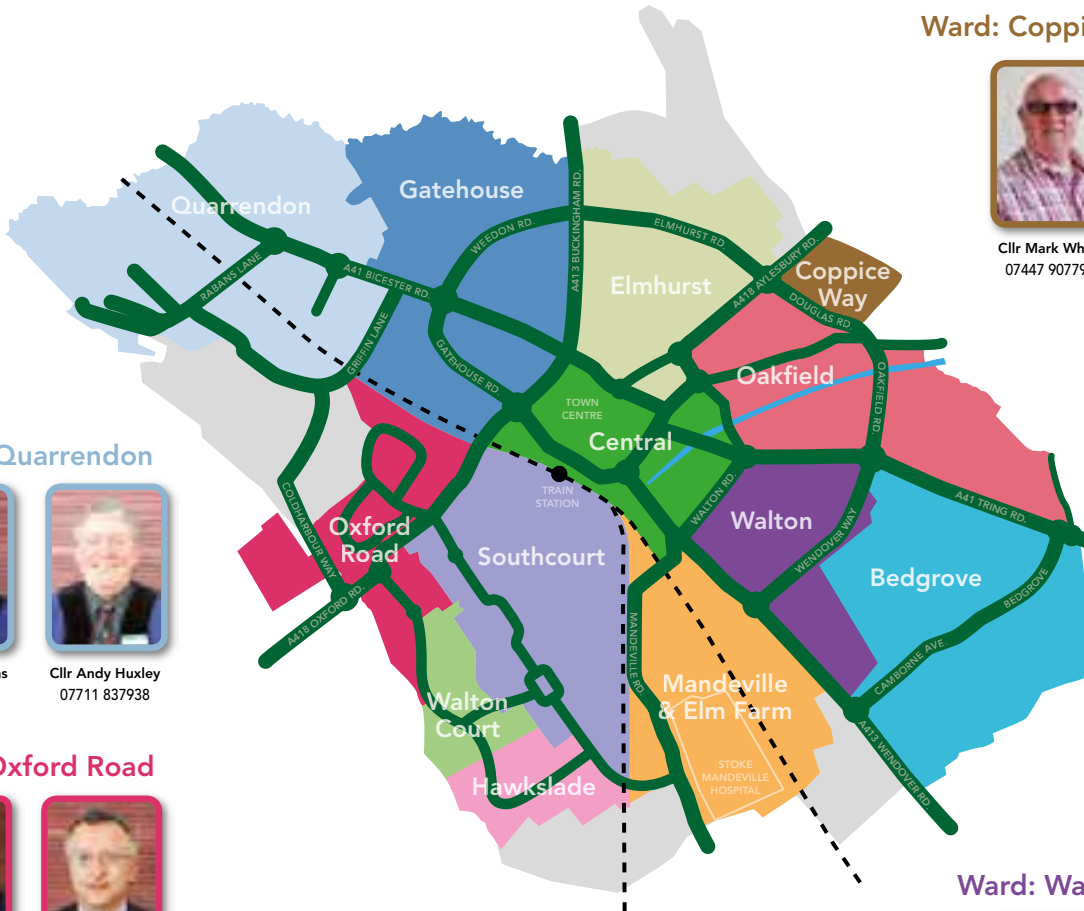
Cllr Jenny Bloom  
01296 434123



Cllr Tom Hunter-Watts  
07595 178660



Cllr Mark Winn  
01296 393304



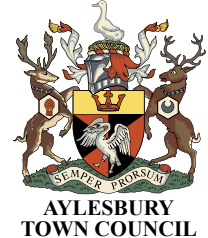




## Who do I talk to about? ...

### AYLESBURY TOWN COUNCIL IS RESPONSIBLE FOR:

- Office of the Mayor and Mayoral engagements
- Management of the seven allotment sites
- Tring Road Cemetery
- Devolved Services – grass cutting, tree works etc.
- Support Twinning of Aylesbury with Bourg-en-Bresse
- A programme of events throughout the year such as Parklife, Tudor Fayre, Aylesbury on Sea, Christmas and Summer events along with other free events
- Award of grants to local groups and charities
- Free quarterly magazine, Aylesbury Town Matters
- Britain in Bloom (a partnership project) and Aylesbury in Bloom (hanging baskets, planters, floral beds, roundabouts and more)



**Aylesbury Town Council** is the council closest to the residents in the parish of Aylesbury. The Town Council is here to be a voice for the residents by representing their views on issues affecting them.

Call: **01296 425 678** or visit: [www.aylesburytowncouncil.gov.uk](http://www.aylesburytowncouncil.gov.uk)

### AVDC IS RESPONSIBLE FOR:

- Collection of Council Tax and business rates
- Household recycling and waste disposal
- Local planning and building regulations
- Public car parks
- Licensing and Environmental Health
- Leisure Services (including Aqua Vale and all parks)
- Award of grants to local groups and charities



**Aylesbury Vale District Council** deal with issues covering the whole of Aylesbury Vale and has a very regulatory remit. Call: **01296 585 858** or visit: [www.aylesburyvaledc.gov.uk](http://www.aylesburyvaledc.gov.uk)

### BUCKS COUNTY COUNCIL IS RESPONSIBLE FOR:

- Highways
- Education and Libraries
- Social Services
- Trading Standards
- Registrar of births, deaths and marriages
- Waste disposal (excluding household waste)



**Bucks County Council** is the top tier of local government and provides services on a county-wide basis. Call: **01296 395 000** or visit: [www.buckscc.gov.uk](http://www.buckscc.gov.uk)

# ATC News

## Town Mayor's Update

As I sit to write this, my final update as Town Mayor, I find myself reflecting on not just the last three months but the whole year. I make no apology for becoming just a little emotional as I am reminded of all the events attended and incredible people I have had the honour of meeting.

These final months have been the busiest and most challenging of the year with me being forced out of my 'comfort zone' on many occasions.

In February I was invited to the Rotary Design and Technology challenge, a fascinating day spent with young people from across Aylesbury as they faced the challenge of designing and building a working draw bridge. With over twenty teams, I was amazed that each design was unique.

I have welcomed numerous groups to the Mayor's Parlour including local schools, Scouts, Cubs and Beaver groups as well as personal visits from residents of Aylesbury.

There have been many parties that I have been fortunate enough to attend. The Gateway Club in Aylesbury celebrated their founder Pam's retirement after over 30 years of service.

Penny Farthing Court held an Easter party where I met none other than the Easter Bunny and danced and sang with residents and guests.

Judging the Easter bonnet competition at The Willows Nursery was difficult as they were all so lovely. I have had brilliant times on play dates at The Willows and Southcourt Baptist Church Nursery where I have spent time building towers and playing with the play-doh.

A drinks reception held at the Chamber in April proved to be popular with charities, local businesses and organisations attending. Following the evening I have received plenty of positive feedback regarding projects that are commencing and alliances forged. I look forward to learning more about these projects in the near future.

On top of these local engagements I have fulfilled civic duties including visiting Leighton Buzzard, Houghton Regis and RAF Halton.

A few personal challenges along the way have been completing a firewalk at Avondale Care Home with staff members and working with Mix 96 completing the Mayor's Challenges!





I would like to take this opportunity to thank everyone for inviting me to your clubs, groups, events and even your homes and making me feel so welcome. I have enjoyed every single minute of the year and have learned so much about the communities within Aylesbury.

Taking on the role of Mayor has allowed me to understand how many of our services are provided by volunteers and the impact these people and groups have on the community – I am in awe of the commitment many of you have to your community and the organisations that support those in need.

It has been a pleasure working with Community Unity Project and to be involved with all that they do. Shoshana and Richard Willets are a true inspiration and I hope to continue some projects with them.

I am not going to deny that I have found it difficult to juggle all my commitments at times and the role has had a significant impact on my family and work life but the experience has been a positive one and I have memories that I will treasure forever.

Finally, 'thank you' to my family and friends for their support and to Sue Carpenter (the Mayor's PA) who has ensured my diary runs smoothly and I am always where I am supposed to be!

**Cllr Allison Harrison**

If you would like to invite the Mayor to attend an event you are holding, please contact the Mayor's Assistant Sue Carpenter at the Mayor's Office by calling **01296 425678** or email: [s.carpenter@aylesburytowncouncil.gov.uk](mailto:s.carpenter@aylesburytowncouncil.gov.uk)







## Stocklake Park

Students from Stocklake Park Special School welcomed some visitors to their Easter assembly last term. North Midland Construction, the contractors carrying out the works near the school, organised a colouring competition for the students and visited to present the prizes.



The company ran the colouring competition for all students and planned to award prizes and certificates to the best entries, however the construction team was so impressed by the students' entries they couldn't pick winners and instead presented a prize and certificate to every student.

Head of School Gill Mullis said: *"I was bowled over when I realised that everyone would receive a prize. Stocklake Park students have a range of learning disabilities and the North Midland team ensured everyone received a suitable prize"*.

Alex Spencer, Contracts Manager for North Midland Construction added: *"We have been working near Stocklake Park School for around ten weeks now. We have met with the school on a number of occasions, and formed an excellent relationship with the staff and students."*



## Harding House

Students from Harding House, a post sixteen provision of Stocklake Park, recently enjoyed a special day filled with science. The experience was led by volunteers from GE Healthcare.

Students took part in a variety of exciting experiments and learnt about the density of liquids. They also played detective and were challenged with cracking codes and detecting fingerprints!

Harding House Teacher Lindsey Chamberlain organised the day, she said: *"It was a fun day encouraging students to make predictions and acquire scientific skills. It was fantastic to see the students enthusiastically investigate the world of science."*

## Broughton Junior School

For the last four years pupils and teachers from Broughton Junior School have worked tirelessly on creating a dragon for our annual St George's Celebrations and Scout Parade.

In the morning of the event it can be heard roaring and drumming all the way from Church Street, as it makes its way down to Market Square for a standoff with St George.



We would like to say a big thank you to the pupils, teachers and parents for their dedication and commitment. It is a great pleasure seeing so many youngsters having fun at the event and getting involved with their local community. Each year the pupils take the time and effort to progress and develop their work of art. So if you haven't seen the dragon this year, make sure to come to next year's St George's celebrations where you can see the dragon and hear his big roar.





## Buckinghamshire

Buckinghamshire Mind has introduced a new Peer Support Service for young people aged 13-18. The new Youth Befriending Service can enable



young people to increase their own strength and resilience, improve their self-esteem and confidence and help them process experiences by meeting up

for an hour a week with someone close to them in age who can offer them emotional support and guidance.

Simply having someone whom they can trust and who will listen to them without judgement can make a massive difference to a young person who is struggling, lonely or isolated.

If you know of someone who would benefit from this service please contact us on **01494 463364** or visit our website **www.bucksmind.org.uk**.

Alternatively you may wish to apply to become a Youth Befriender and, if so, you would need to be aged 17-24 and be passionate about young people's mental health – if this sounds like you then we would love to hear from you.



## FREE Kids Thursday Events

Aylesbury's free #AylesburyThursdays events continue to provide fab, fun, free events on every Thursday of Bucks CC school holidays in 2016!

This summer's first #AylesburyThursdays event sees the return of the ever-popular Colonel Custard, providing four free half hour magic shows between 11am and 3pm on Thursday 28 July – every show completely different!



## E Company - Buckinghamshire (The Rifles) Army Cadet Force

On 2 March the Aylesbury Branch of the Royal British Legion awarded trophies and a certificate to 4 (Aylesbury) and 7 (Hawkslade) Platoons for raising £963.27, more than any other cadet service in the local area, during 2015's Poppy Appeal. The awards were accepted by Cadet Cpl Grace Farrow and Cdt Jack Lumley, both from 4 Platoon along with Commanding Officer Major Matt Yearwood.



Major Yearwood said: "It was a surprise and honour to have been given these awards and we will work even harder to raise more for the 2016 Appeal".

E Company also held their annual Inter-Platoon Competitions Weekend, testing cadet teams in a wide variety of skills such as shooting, navigation, military knowledge, observation, physical training, archery and command tasks. 1st Place was taken by the 'A' Team from 6 (Chesham) Platoon, with further awards for two 4 Platoon cadets - 'Best Cadet' to Cdt Madison Lawson and 'Best Cadet NCO' to Cdt LCpl Khalid Ateem.

E Company consists of 3 (Missenden), 4 (Aylesbury), 6 (Chesham), 7 (Hawkslade), and 21 (Princes Risborough) Platoons. The age range of cadets is from 12 to 18 and includes both girls and boys.

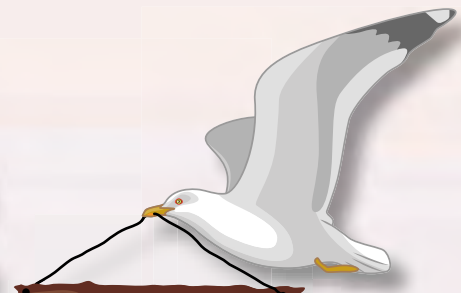
For more information see **www.bucksacf.com** or email **se-buc-cao@rfca.org.uk**

Other exciting #AylesburyThursdays activities in the summer holidays include a Spy Day, a visit from a mini farm and a fantastic assault course for the 'Road To Rio' day on Thursday 11 August.

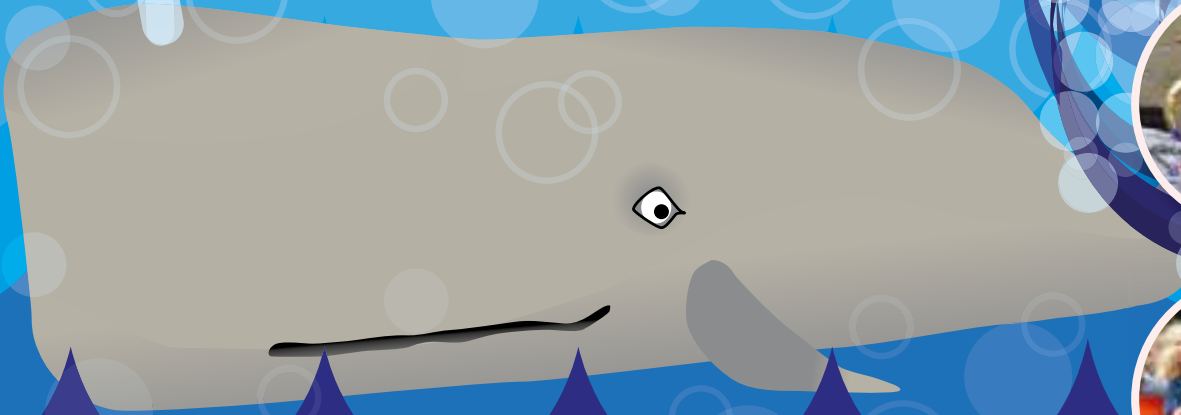
See #AylesburyThursdays on twitter for further information, or see local press nearer the time.

# Giants of the Sea

FREE



Aylesbury on Sea  
Sunday 3rd July 2016  
11am - 4pm Kingsbury



## 50ft Giant Whale at the Museum

along with all the traditional fun you expect at Aylesbury on Sea including donkey rides, sand pits, magic shows, brass band, inflatables, balloons, face-painting, games, crafts and loads more all for **FREE**



[www.aylesburytowncouncil.gov.uk](http://www.aylesburytowncouncil.gov.uk)  
01296 425678

