

Serving the people of Aylesbury

# AYLESBURY TOWN matters

AYLESBURY TOWN COUNCIL MAGAZINE | ISSUE 67 | DECEMBER 2022



AYLESBURY  
TOWN COUNCIL





# Jonathan Page play Centre

AFTER SCHOOL CLUB & HOLIDAY PLAYSCHEMES



## Christmas Playscheme




21-23 December 2022  
& 3 January 2023



'Tis the season to be jolly and have a whole load of festive fun at the Jonathan Page Play Centre's Christmas Playscheme. We've got lots of Christmas crafts galore as well as lots of singing and dancing in time for the Christmas disco.

We'll also be looking ahead to 2023 by thinking about our New Year's Resolutions with the children too.






### HOURS AND PRICES (PER CHILD, PER DAY)

Full Day 8am-6:30pm - £31  
Half Day 8am-3:30pm - £23  
AM session 8am-12:30pm - £16.50  
PM session 12:30pm-5pm - £16.50

Playscheme is for all children from the age of 4 up to their 13th birthday.

To register and book sessions for your child please visit [jppc.magicbooking.co.uk](http://jppc.magicbooking.co.uk)

All bookings must be accompanied by payment. We accept card, cash payments, childcare vouchers and tax free childcare.



# Welcome



**Welcome to our latest edition of Aylesbury Town Matters.** As we approach the end of 2022, we can reflect on a year that, while we are not necessarily where we were in 2019, and recognising the loss and sacrifices that many have had and continue to make, has afforded the opportunity to meet and take part in events, fundraising and community activities.

We are extremely excited to be bringing you a **brand-new Christmas lights** display. This is the first time the Town Council has been

in charge of the lights. We hope you enjoy the lights from **20 November** through to the **New Year. Carolfest** is also back after two years away. Join us on **Sunday 11 December 6-7pm** at St Mary's Church. Next Stage Choir, Bedgrove Junior School and Caduceus Brass Quintet will be performing, festive attire is actively encouraged!

The Mayor, Cllr Tim Dixon's, **10 Tonne Challenge for Aylesbury Foodbank** took centre stage with Marillion championing the project at their latest gig in Aylesbury. It was so successful that foodbank collections took place at other UK tour dates and the project featured on the BBC.

Our popular **Sunday Lunch Open Mic sessions** have a new indoor home for the winter months. They'll be at Temple Coffee from **12 noon to 3pm** on the **first Sunday** of the month. We're keen to keep supporting not only this initiative but also local businesses. Please contact our Community Liaison Officer for more details by emailing [diane.harrison@aylesburytowncouncil.gov.uk](mailto:diane.harrison@aylesburytowncouncil.gov.uk)

While the team are still recovering from a successful **Parklife Weekend** we're already planning for next year's event. Local bands/artists can register their interest to perform to thousands at our biggest event of the year, **Live in the Park**. This is a fantastic opportunity. Please see page 4 for more details.

Thank you to everyone that has supported our free events across the year and we look forward to putting on our programme for 2023 as well as all the other features around town such as Aylesbury in Bloom and our popular flower displays. My thanks also to all the officers at the Town Council for their hard work and dedication over the year.

Best wishes and a very Merry Christmas to all.  
**Cllr Richard Lloyd**  
Leader of Aylesbury Town Council

An article published in our September 2022 under the title 'Lindengate Charity' was misquoted. The first quote was by Karon Hart and the second quote was by a regular visitor to Lindengate. We apologise for this error.

## INSIDE THIS ISSUE...

### AYLESBURY TOWN COUNCIL NEWS

Jonathan Page Play Centre Christmas Playscheme	2
Welcome Note	3
Parklife Weekend	4
Star Supporters, Carolfest Returns, Soapbox Derby 2023	5
Dementia Friendly Aylesbury	8
Christmas Lights, Proclamation of the King	9
Jonathan Page Play Centre, Upcoming Council Meetings	10
Sunday Lunch Open Mic Returns, Update on Coffee	11
Grounds Recycling, Yarn Bombing	
Aylesbury Town Council Grants	16
Message from the Mayor	17
Aylesbury Town Council Ward Map	20
Council Services	21
Aylesbury Youth Town Council	23
Carolfest	24

### ENVIRONMENT

Lindengate Winter Appeal, Hedges and Trees, Allotment Corner	6
Aylesbury in Bloom Competition Winners	7

### COMMUNITY NEWS

Aylesbury Town Chaplaincy, Buckinghamshire Mind	12
Be the Business, Read Easy, Town Hall Christmas Closing Hours	13
Karwachauth Mehendi Night, Dog A.I.D., Platinum Way Planting	14
Stoke Mandeville Spinal Research, Foodcycle of Aylesbury Vineyard, Community Impact Bucks, Aylesbury Rotary Club Carol Float times	15
The Rotary Club of Aylesbury Hundreds Santa Float times	16

### ART AND LEISURE

Aylesbury Lunchtime Concerts, Panto at QPAC, Aylesbury Choral Society	18
Aylesbury & District Ramblers, Calibre Audio, Christmas Craft and Gift Fair, Discover Bucks Museum	19

### YOUNG PEOPLE

Thomas Hickman School, Aylesbury High School, Action4Youth	22
Central Training Aylesbury	23

Keep up to date with all things Aylesbury Town Council via our social media channels.

[f @aylesburytc](https://www.facebook.com/aylesburytc) [@aylesburytc](https://www.instagram.com/aylesburytc) [@aylesburytowncouncil](https://www.youtube.com/aylesburytowncouncil)

## CONTACT DETAILS

Aylesbury Town Council, Town Hall, 5 Church Street, Aylesbury, Buckinghamshire HP20 2QP  
Tel: **01296 425678** Fax: **01296 426134** [info@aylesburytowncouncil.gov.uk](mailto:info@aylesburytowncouncil.gov.uk) [aylesburytowncouncil.gov.uk](http://aylesburytowncouncil.gov.uk)

Photos throughout the magazine courtesy of Maurice Cousins, Derek Pelling and Steve Cook from Aylesbury & District News, Picture Delight, Steve Richmond and Paul Adams.

Printed by Bluepepper Designs, Aylesbury. [bpdesigns.co.uk](http://bpdesigns.co.uk)


Aylesbury is twinned with Bourg-en-Bresse



## PARKLIFE WEEKEND 2022

What a fantastic August Bank Holiday Weekend we had. Thank you to everyone who joined us at any of our events across the weekend. On the Saturday, Live in the Park hosted 14 local bands and artists performing 9.5 hours of continuous music performed across two stages.

A massive shout-out to Just Can't Get Enough, RajD, Chloe Green, Damo And The Dynamites, Bitterroot, Next Stage Choir, Clark Rainbow, Heidi Browne, LJPheonix, TBaze, Micoran, Codename Colin, The Band With No Name and ZARAK for rocking Vale Park.



Think you have what it takes to wow our Live in the Park crowd in 2023? You're invited to apply to perform on one of our stages. Register your interest online at [bit.ly/PlayAtLive2023](https://bit.ly/PlayAtLive2023)

A special thank you to Stoke Mandeville Hospital Radio's Dez Kay for compèring the day.

The Kids Ent Tent gave families a good giggle, the Community Involvement Area was a chance for local groups, charities and businesses to engage with you and local food and drink retailers were enjoyed by all.

New for 2022, Battle of the Bands took place in the Ent Tent. The winning band, Crimson 97, won a recording session provided by XYZ Music Academy and also bagged a stage slot at next year's Live in the Park. Runners up, Faces Fall, will also feature on next year's Live in the Park line-up.

On Sunday, Proms in the Park saw a captivating performance from Aylesbury Concert Band and soprano soloist Eleanor Sanderson-Nash. Compèred by Erika Sanderson, the crowd were treated to a selection of songs from Disney's Enchanto and Frozen, The Legend of Zorro and How To Train Your Dragon.

The I Have A Voice Too! theatre group choir opened the evening with a special performance of a song they co-wrote to celebrate the Queen's Platinum Jubilee earlier this year.

A special interval performance was presented by Saveliy and Zlatoslava who both fled Ukraine when the war started with their mother Inna. The siblings studied at the Khmelnytskyi Children's Musical School of Arts and performed Ukrainian folk songs to the Proms in the Park audience.

A very special thank you to BORG 4x4, Aylesbury Wombles, Hand Talking BSL interpreters, all performers, caterers, volunteers, charities, groups, organisations, companies and photographers for making the weekend so fantastic. And all of you who came - we couldn't do it without you!

Parklife Weekend will return to Vale Park on **26-27 August 2023**. For more information about our events, visit [aylesburytowncouncil.gov.uk](https://aylesburytowncouncil.gov.uk)

## STAR SUPPORTERS



We'd like to say a special thank you to our voluntary Town Council photographers who always take excellent images at our events and mayoral engagements. Thank you to Maurice Cousins, Derek Pelling, Laura McGovern, Paul Maginn, Paul Adams, Steve Richmond and Krytan Photography. A special thank you to **Steve Cook** (Picture Delight) who has followed our Town Mayors at many engagements and has attended most Town Council events over the last six years. We're so grateful to have thousands of images to look back on which document special moments that have happened in our town.



## CAROLFEST RETURNS!

**Grab a song sheet and sing along to your favourite Christmas carols on Sunday 11 December!** Join us for an hour of singing in St Mary's Church from 6pm. Children from Bedgrove Junior School Choir along with Caduceus Brass Quintet and the Next Stage Choir will lead the carols. So bring your best singing voice and wear your finest Christmas jumper for a fun festive evening for all the family.

There will be mince pies, tea, coffee and hot chocolate available with proceeds donated to the Town Mayor's chosen charities of the year – Aylesbury Foodbank and Emmett's Genies.

We'd like to remind you that this is predominately a standing event, with priority seating available for those in need. We're so excited to bring you a relaxed evening of singing – it's been too long!

**See you on the 11th!**



## SOAPBOX DERBY 2023

**This could be you! Sunday 18 June** might seem like a good while away but if you're hoping to be crowned a Soapbox Derby 2023 champion, we'd recommend getting your team and ideas together as soon as possible!

Our Father's Day event in White Hill Park will have you in a spin from planning, designing, creating and competing – all in the name of fun! How would your homemade kart look? Think you have what it takes to wow our crowds?

Spaces are limited, so if you'd like to be the first to know when our Soapbox Derby registration officially opens, complete our short form online at [bit.ly/Soapbox23Interest](https://bit.ly/Soapbox23Interest) or call **01296 425678**. It is free to enter, so on your marks, get set, go!



## WINTER EMERGENCY APPEAL 2022

In 2022, Lindengate Mental Health Charity has already supported over 1,500 people, through visits to our gardens, volunteering and participation in our programmes. We want to be able to continue to support people, but, in this economic climate, need additional funding just to be able to maintain current levels of service. 1 in 4 people experience mental ill health, which could be one of your loved ones. Together, we can help change lives. Please support our appeal now.

### WHY SUPPORT LINDENGATE?

- Our programmes are a lifeline for local people struggling with mental health.
- We have supported 280 young people so far this year, to improve and maintain their good mental health, through nature-based activities.
- Since 2021, over 400 NHS staff have been supported by Lindengate through our Nature Connection programme.
- Our Memory Pathways programme is a vital service for people living with memory loss and dementia and their carers.
- Our community of 200 volunteers benefit from their time at Lindengate and the opportunity to give back to the community. Their contribution is recognised in our Queen's Award for Voluntary Service 2022, equivalent to an MBE.
- Our six-acre wellbeing gardens, which are open to all, have been awarded with a Green Flag Community Award 2022, for having one of the best quality community gardens in the country.



We are recognised as a flagship charity in Bucks, but this does not protect us from the enormous pressure that is being put on all charities. **We need £2,500 per day to support the 2,000 adults and young people who will benefit from being at Lindengate each year.** Despite diversifying our income streams and working tirelessly, Lindengate needs an additional £80,000. The need within the community is greater than ever and, with the cost of living crisis continuing to rise, Lindengate can be a lifeline to so many. Donating is easy, visit the Lindengate Winter Emergency Appeal website at [lindengate.enthuse.com/donate#](https://lindengate.enthuse.com/donate#)

## HEDGES AND TREES

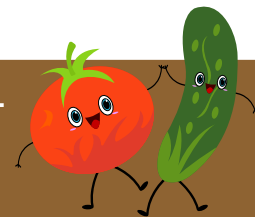
**Do you have a hedge or tree that overhangs a public right of way?** If you have an overhanging hedge or tree obstructing a pathway, it is your responsibility to cut it back. Aylesbury Town Council receive lots of complaints about overgrown hedges and trees that are on private land.

### DID YOU KNOW?

Under Section 154 of the Highways Act 1980 hedges, trees and shrubs are required to be cut back to avoid overhanging a highway, road, or footway to which the public have access. This is to avoid danger or obstruction of the passage of vehicles, pedestrians (including those with pushchairs), wheelchairs, cyclists, horse riders and includes any streetlights.

Aylesbury Town Council's role under Devolved Services by Buckinghamshire Council, is to ensure that home and business owners maintain hedges to avoid danger or obstruction to users of the highways. Any obstructing trees or hedges need to be trimmed back by the landowner. Please check the boundary of your property regularly to ensure you are not encroaching onto the public highway. **Thank you.**

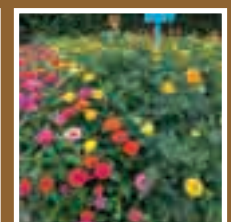
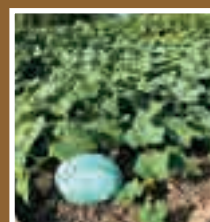
## ALLOTMENT CORNER



Our **Crown Leys** allotment site has a community plot. All year round, members of the community look after the area. The produce grown on the plot goes directly to **Aylesbury Foodbank**. Here is some produce that was taken to the foodbank recently.



Thank you to **Stasia** from Bedgrove allotments for sending us these impressive photos of her plot.



# LOCAL GARDENERS COMMENDED IN TOWN COUNCIL'S GARDEN COMPETITION



	Certificate	Bronze	Silver	Silver Gilt	Gold
<b>Best Front Garden</b>		Dharmasiri Nagalingham	Dovile Putramente Paul Trayling Nirmala Takodra Gillan Henley	Steve Foster Annette Davies Colin Ashby Peter Binns Christine Fifield Kelly Smith Phil Welch Mr & Mrs Ridgeway Anila Panchal	Stephen Clarke
<b>Best Back Garden</b>		Norman Barlow & Susan Winstone	Dharmasiri Nagalingham Dovile Putramente Peter Binns Steve Foster Kelly Smith Nirmala Takodra Ingrid Papadopolous	Ron & Heather Murray Glen & Londa Quanico Mr & Mrs Ridgeway Sarah Franklin Jo Tunnell Micheline D'Costa Christine Fifield	Emma & Craig Mathews Andi & Dalila Su McDonagh Colin Ashby Phil Welch Thomas Brown Paul Flower Anila Panchal
<b>Best Edible Garden</b>				Andi & Dalila	Su McDonagh Ron & Heather Murray
<b>Best Container Garden</b>				Hank Swanepoel Ramya Palanisamy Glen & Londa Quanico Paul Stroud Gillian Henley Annette Davies Su McDonagh	Peter & Margaret Walker Emma & Craig Mathews Phil Welch Christine Fifeild Colin Ashby
<b>Best Wildlife/ Nature Garden</b>			Colin Ashby	Ron & Heather Murray Gloria Whiting Annette Davies	Paul Stroud
<b>Best Communal Garden</b>				Brain Rehabilitation Trust Masonic Housing Community Grow (Healthy Living Centre)	St Peter's Church Horatio's Garden Florence Nightingale Hospice Poplar Grove Practice
<b>Best Community Edible Garden</b>	Rabbit Retail			Community Grow (Healthy Living Centre)	St Peter's Church

**Unique gardens and a sense of community – this year's Aylesbury in Bloom Garden Competition attracted residents and organisations that showed off their gardening greatness.**

Entrants were awarded prizes by Cllr Anders Christensen at the Awards evening on **Thursday 20 October** at Aylesbury Railway Club.

Voluntary judges visited gardens of all shapes and sizes and awarded points to each. The overall number of points determined whether entrants would receive a Certificate, Bronze, Silver, Silver Gilt or Gold award. The judges also gave special awards, see results in the table.

A full list of all the awards from the evening can be found here: [bit.ly/BloomResults22](http://bit.ly/BloomResults22).

The Town Council would like to thank all those who took part and a special thank you to Michael Anthony for sponsoring the competition.

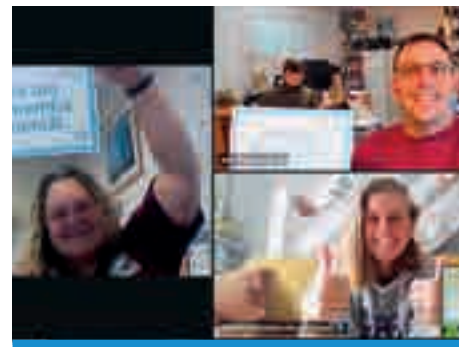
Judges' Commendation – Most Joyful Garden	Stephen Clarke
Mayor's Cup – Best Overall Communal Garden	St Peter's Church
Best Communal Garden Newcomer	Poplar Grove Practice
Best Newcomer (Resident)	Paul Flower
Best Overall Garden (Resident)	Thomas Brown



## DEMENTIA FRIENDLY AYLESBURY



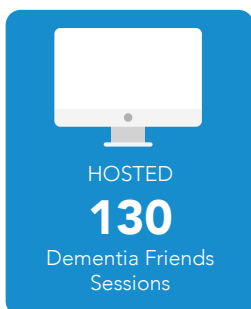
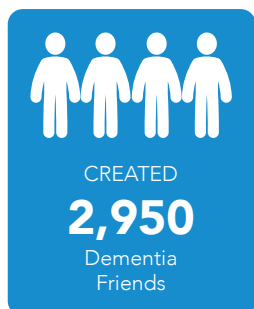
Here are some of the latest Dementia Friends that Aylesbury Town Council's Dementia Friendly Aylesbury project has created. From tea parties to exhibitions, there's something for everyone to enjoy with an amazing team to greet and help at Discover Bucks Museum! Thank you for celebrating ageing well in Aylesbury.



Shout out to the members of the **Aylesbury Cadets** and **Chiltern Rangers** who've also become Dementia Friends! Great to see young people also supporting our Dementia awareness initiative.

## DEMENTIA FRIENDLY UPDATE

It has been another fantastic year for the Town Council's Dementia Friendly Aylesbury project. Since 2016, we have...



We look forward to meeting even more members of the community in 2023 and continue our Dementia work in our town.

## AGEING WELL IN AYLESBURY

It was great to see lots of organisations taking part in the Ageing Well event held at Friars Square. We met with some lovely members of the public and local businesses. It's good to be out again. If you'd like to be involved in future events, email our Dementia Friends ambassador: [benedicta.lasoye@aylesburytowncouncil.gov.uk](mailto:benedicta.lasoye@aylesburytowncouncil.gov.uk)



### BECOME A DEMENTIA FRIEND

You can become a Dementia Friend from the comfort of your own home. Join us online via Teams on **Monday 6 February** for an interactive 45-minute session with our Dementia Friends Ambassador to learn about dementia and how it affects your community. You can join for free but will need to book your place. Find out how here: [bit.ly/DFFeb22](https://bit.ly/DFFeb22)

If you'd like to find out more about the Town Council's Dementia Friendly Aylesbury project, visit [bit.ly/DFAYlesbury](https://bit.ly/DFAYlesbury) or email [Benedicta](mailto:Benedicta) (email address below).



# PROCLAMATION OF THE KING AND BOOK OF REMEMBRANCE

It was with profound sadness that the Town Council learned of the death of Her Majesty Queen Elizabeth II. We shall remember Her Majesty for her inspiring dedication, devotion and service to our nation and the Commonwealth.

The Mayor of Aylesbury, Cllr Tim Dixon, attended the Proclamation of our new Sovereign, His Majesty King Charles III on Sunday 11 September in Market Square.

The Lord Lieutenant, The Countess Howe, opened the event and invited the High Sheriff to read the Proclamation speech. Three cheers were called for His Majesty the King. Flowers and other tributes were laid next to the Queen Elizabeth II statue in Market Square. Residents were also invited to write in the Town Book of Condolence in the Town Hall Chamber during the period of mourning. Thank you to those who took time to visit us and reflect.



## AYLESBURY'S CHRISTMAS LIGHTS



AYLESBURY  
TOWN COUNCIL



Aylesbury Town Council is proud to be organising the Christmas lights this year with support and grant funding from Buckinghamshire Council. There will be a new look and feel for the lights with LED and a selection of bioprint designs.

The eco-design of the decorations is a priority. The 2D decorations are equipped with a recycled and recyclable aluminium frame designed to support the structure and printed with the wide-format printers in bioprint or recyprint. The 100% LED lighting components are recycled after use. These brand new eco-responsible materials allow the removal of more than 80% of aluminium from the 2D motifs, which has a substantial impact on the carbon footprint. The bioprint or recyprint manufacturing process emits 10 times less CO<sub>2</sub> than aluminium.



Bioprint designs are made from bio sourced GMO-free sugar cane which is turned into dehydrated bioethanol. When the granules arrive at the workshops they are dyed with varying colours. The material is then injected into a 3D printer which produce colourful, biodegradable, and recyclable structures. A process that reduces the waste at the manufacturing stage and allows total recyclability at the end of its life. 'Biodegradation' means the decomposition of organic matter by microorganisms, with no harmful effect on the natural environment. The decorations biodegrade slowly at the end of their life - they can be installed outdoors for long periods without this causing aesthetic or mechanical damage. One

advantage of this slowness is that it minimises the greenhouse gases generated when the complex molecules that make up the revolutionary material biodegrade.

While industrial composting is one way to sensibly manage this biomass, the eco-friendliest approach is to recycle the material. By doing this, daily waste production can be minimised. The Christmas lights will run from **Sunday 20 November** until **Thursday 5 January**.



## We had a great time during the summer at the Play Centre.

We were visited by Ellie from the Queens Park Arts Centre who did some fantastic artwork with the children. Ellie is now working on the children's individual works of art to create one big piece of art. We can't wait to see it!

We also had a great time during Carnival Week at our Summer Playscheme. The children had fun drumming and preparing for an extra special parade around our go kart track.

Recently we received £500 from Waitrose's Give A Little Love campaign. During the pandemic we all spent more time than normal inside, so we thought it would be a great idea to use the money to get some equipment for the children to enjoy and encourage the children to be more active.

With this money, we've purchased lots of items to promote movement such as hurdles, hoop-weighing scales, swing ball, new balls, balancing equipment, skipping ropes on poles for children with one arm or hand and a frisbee target. Thank you to the Waitrose Give A Little Love campaign. We are very grateful for their support.

We can't believe Christmas is soon approaching. We've got some great fun planned during our **Christmas Playscheme (21-23 December and 3 January)**. We will have Christmas crafts galore as well as plenty of singing and dancing in time for our Christmas disco.

If you would like your child(ren) to join us during the Christmas Holidays, please visit our Facebook page [@jpplaycentre](#) or visit [aylesburytowncouncil.gov.uk/jppc](http://aylesburytowncouncil.gov.uk/jppc) for more information and how to book spaces.

Please note our spaces are limited so we recommend you book in as soon as you can to avoid disappointment.



## UPCOMING COUNCIL MEETINGS



All meetings commence at 7pm in the Council Chamber, Town Hall, 5 Church Street, HP20 2QP. Please visit [aylesburytowncouncil.gov.uk](http://aylesburytowncouncil.gov.uk) or the main noticeboard at the Town Hall for all agendas and all dates for 2022-23.

### DECEMBER 2022

- Monday 5** - Planning and Licensing
- Wednesday 7** - Direct Services
- Thursday 8** - Town Council
- Wednesday 14** - Communities
- Monday 19** - Planning and Licensing

### JANUARY 2023

- Wednesday 4** - Planning and Licensing
- Wednesday 11** - Finance
- Thursday 12** - Town Council
- Monday 16** - Planning and Licensing
- Wednesday 18** - Grants
- Monday 30** - Planning and Licensing

### FEBRUARY 2023

- Tuesday 7** - Communities
- Wednesday 8** - Policy
- Thursday 9** - Town Council
- Monday 13** - Planning and Licensing
- Monday 27** - Planning and Licensing

Please check with the Town Hall to make sure that the scheduled meeting has not been changed or cancelled.



## SUNDAY LUNCH OPEN MIC RETURNS

Due to popular demand, Sunday Lunch Open Mic continues during the winter season. This time it's indoors at Temple Coffee, Temple Street, Aylesbury. They will take place on **4 December, 8 January, 5 February** and **12 March** at the new time of **12 noon to 3pm**.

The acoustics are brilliant in the basement location, as is the coffee and cake. Those who entertain us using their guitars and the café piano are very talented, from those performing for the very first time to those who took part in the summer Open Mic sessions. We often hear poems and verse as well as original songs.

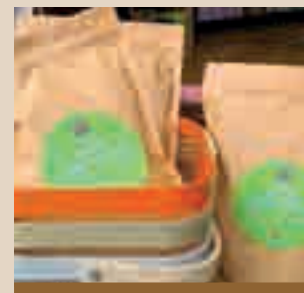
**Join us soon on a Sunday afternoon.** From novice to experienced, everyone is welcome to perform or just watch.

**Cllr Sherrilyn Bateman**



## UPDATE ON COFFEE GROUNDS RECYCLING

The recycling of used coffee grounds has been well received in the town, both by businesses and the public.



Over 600 bags have been given out to the participating businesses in the town centre and approximately 450 bags have been collected by the members of the public. We have even experienced some members of the public

bringing their pouches back to be refilled which is great news!

Businesses have really embraced the initiative and are excited to be part of it. They are positive about supporting the environment and reducing their waste as well as receiving extremely positive feedback from their customers. Based on the success of the scheme, a further 1,000 pouches have been purchased.

If you would like to know where you can pick up a pouch, please email [diane.harrison@aylesburytowncouncil.gov.uk](mailto:diane.harrison@aylesburytowncouncil.gov.uk) for further information.



## YARN BOMBING

Aylesbury Town Council is delighted to be in a creative partnership with the Aylesbury Yarn Bombing group and Aylesbury Waterside Theatre this year! Aladdin-themed knitting and crochet will line the walkway from Exchange Street car park to the theatre to celebrate this year's pantomime.

The Aylesbury Yarn Bombers are a talented group of people who have amazing skills, this is a hobby for them, and they are able to create some stunning pieces.



You may have seen some fabulous creations on Aylesbury Market Square in the lead up to Remembrance Day, this was also done by the same group.

The yarns and patterns have been provided by Aylesbury Town Council and Aylesbury Waterside Theatre who are kindly supporting this initiative.

The colourful yarnbombing will be put up on **Friday 2 December** in readiness for panto season and those Arabian Nights!



AYLESBURY  
TOWN COUNCIL

## Are you involved in a local community group or charity in Aylesbury? Would you like to promote your work and events?

This magazine is delivered to every household in the Parish of Aylesbury. For more information call Rachel **01296 425678** or email [rachel.noon@aylesburytowncouncil.gov.uk](mailto:rachel.noon@aylesburytowncouncil.gov.uk)  
There is no charge for community groups and charities.

## SERVING THE HEART OF OUR TOWN

**Aylesbury Town Chaplaincy celebrates its 10th anniversary!** The charity which aims to come alongside those who work, shop, play and live in the town draws on volunteers from across local churches, and is committed to serving people of all backgrounds and faiths.

During the day, volunteer chaplains can be seen visiting business owners, meeting shoppers and others, to be a listening ear, a friendly face and caring presence. Other chaplains are based at the Aylesbury Courts, around Vale Park, Aylesbury Police Station, Morrisons and the University and College campuses, offering an independent, impartial and confidential ear for those who want it.

On weekend nights between 11pm and 3am the Street Angel teams work to support the police, door staff and other agencies by being a calming community presence around the clubs, pubs and restaurants. Once a month, on a Saturday afternoon we have a team of people in the High Street offering to pray for those who need physical, emotional, or spiritual healing.



Lead chaplain, Mark Knight commented: "The Chaplaincy team are, if anything even more welcome following Covid and in the face of current causes of anxiety." Chair of Trustees, Andrew Henderson observed: "Over 10 years our partnership with the town agencies has grown substantially and we see the tremendous work they do. Being able to support this is a real privilege and we look forward to continuing our support for the next ten years."

For more information go to  
[aylesburytownchaplaincy.co.uk](http://aylesburytownchaplaincy.co.uk)



## FRIENDS IN NEED SERVICE

**Buckinghamshire Mind supports the mental health wellbeing of everyone in our communities through the diversity of our services.**

Our Friends in Need service (FiN) provides free peer support groups and a wide range of wellbeing activities, such as arts and crafts, yoga, meditation, singing, quiz nights, day trips and many more. FiN started in East Berkshire in 2016 and has been such a huge success that, in 2018, Buckinghamshire Mind launched Friends in Need Bucks, which includes groups in Aylesbury.

"The thing I like most about Friends in Need is that you can talk openly and honestly and someone will listen to you and not judge you." - Friends in Need Service User

Last year over 80% of FiN members said their confidence had increased as a result of attending, while 78% said that their mental health had improved thanks to FiN.

"Friends in Need has a positive impact on the lives of those affected by depression, anxiety, loneliness and isolation. To give an example, one of our first members to join FiN Bucks trained to be a volunteer running several successful groups. Gaining so much confidence from this, she has also secured a job within the NHS providing peer support." - Ansa Khan, Friends in Need Team Lead

We are inviting residents to join our friendly groups. Please contact Ansa Khan on **07496 874882** or email [ansa.khan@bucksmind.org.uk](mailto:ansa.khan@bucksmind.org.uk) To find out more, visit [bucksmind.org.uk/friends-in-need](http://bucksmind.org.uk/friends-in-need) To support our vital work please text **WELLBEING** to **70480** to **donate £5** or visit [bucksmind.org.uk/donate](http://bucksmind.org.uk/donate)

Running a business is tough right now – and that’s where **Be the Business** comes in. Whether you’re running a kitchen table start-up, corner shop, café or anything in between, Be the Business can support your business goals. Leading a small business often means you’re doing most of the day-to-day tasks yourself – but Be the Business can help you work on your business, rather than just in it.

As an independent, not for profit charity backed by Government, Be the Business have worked with thousands of business leaders to help them achieve their business goals – however large or small – via free 1-to-1 mentoring support and advisory boards.

Their free-to-access flagship mentoring programme matches small business leaders with experienced business executives from some of the UK’s leading companies, including Accenture, BAE Systems, John Lewis, Lloyds and Siemens. Each volunteers their time to help small business leaders in 1-to-1 mentoring relationships in either a 12-week or 12-month format.

They also have a non-executive director-style board scheme, Be the Business Boards, where a group of five experienced business executives from leading firms work with a small business over the course of a year – for free.

With over 248,000 ethnic minority led businesses in the UK, Be the Business, with support from Mastercard, is also empowering ethnic minority business owners from micro and small businesses around the country to succeed in the digital economy through free guidance, helpful tools, and personalised one-to-one mentoring.

You can find out more at [bethebusiness.com/programmes/strive-uk](https://bethebusiness.com/programmes/strive-uk). So, if you run a small business with more than two staff and you’ve been trading for more than a year, Be the Business can help. Find out more at [bethebusiness.com](https://bethebusiness.com)



### WE INVITE YOUR COMMENTS...

If you have thoughts about the town we’d like you to let us know. How do you feel about the town in general? We’d like to know. You can send an email marked ‘ATM Letters’ to [info@aylesburytowncouncil.co.uk](mailto:info@aylesburytowncouncil.co.uk) or write to us at: Aylesbury Town Council, Town Hall, 5 Church Street, Aylesbury, HP20 2QP. Please give us your contact details so that we can reply to you.

## TOWN HALL CHRISTMAS CLOSING HOURS

Our office will close on **Friday 23 December 2022** at 2pm and will reopen on **Tuesday 3 January 2023** at 8:45am.



### A new local charity helping adults across the Chilterns learn to read has received support from Jay Blades MBE and a £5,000 donation from Buckinghamshire New University (BNU).

Across England, 2.4 million adults cannot read at all or struggle to read which can make everyday life challenging and impact on mental health.

**Read Easy Chilterns** is part of Read Easy UK which featured on the BBC documentary about dyslexia - “Jay Blades: Learning to Read at 51”.

Louise Harvey, a Read Easy Chilterns volunteer who lives in Bucks and works at BNU, said: “Our service is completely free. We’re a friendly, inclusive organisation where everyone is welcome at any



stage of their journey of learning to read. Working one-on-one with their own reading coach, at times that fit around their commitments, means there’s no pressure or deadlines. Thanks to the very generous support of BNU, our volunteers and venue partners, we’re here to help any adult who either can’t read or who lacks confidence with reading, for whatever reason.”

The charity supports adults living and working in Buckinghamshire who want to improve their reading skills to enhance their chances in life and work. Both in-person and remote, digital-led coaching sessions are available, with volunteers giving their time for free. Each £50 donated to the charity pays for a new reader’s learning resources.

Know anyone wanting to start or improve their reading? Please ask them to call **07810 184371** for a confidential chat with Andy Gaze at Read Easy Chilterns. [readeasy.org.uk/groups/read-easy-chilterns](https://readeasy.org.uk/groups/read-easy-chilterns)



## KARWACHAETH MEHENDI NIGHT

**Karwachauth is observed annually by married women from Hindu and Punjabi communities for the long life of their husbands.** This year, the mehendi night was organised at The Grange school Aylesbury by Shakti Women's Group and Punjabi Community CIC. Cllr Nidhi Mehta was the chief guest.

Karwachauth is also known as Karak Chaturthi. On this day, women keep a strict fast for almost the entire day without taking any food or even a single drop of water. The women break the fast after looking at their husbands' faces through a sieve and make offerings to the moon during the night.

The tradition of applying mehendi (henna) on their hands is an integral part of Karwachauth. It is believed that if the colour of the mehendi is dark, the lady will get plenty of care and love from her husband. Henna artists apply intricate and fascinating designs. Married women receive beautiful and expensive gifts from their husbands and in-laws.

The event was well attended by ladies who were all dressed in their most colourful traditional attires (sarees, lehengas, suits) and jewellery. There were food stalls serving Indian delicacies and other stalls selling handicrafts, jewellery, clothing, home decors etc. Everyone enjoyed the Karwachauth theme-based games and danced throughout the evening while getting their hands adorned with mehendi.

## CHARITY APPEALS FOR VOLUNTEER DOG TRAINERS

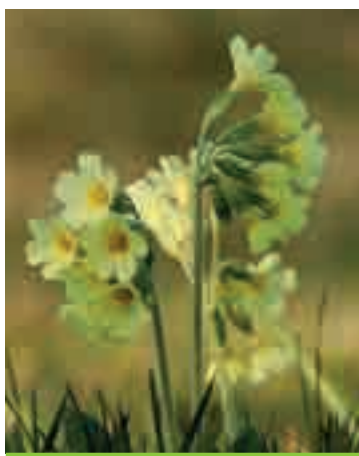


**Dog A.I.D. showcased the impact of their Assistance Dogs at a special event at Stoke Mandeville Stadium on Saturday 24 September.** Rob Steele from Grendon Underwood, shared his story about how his life has changed since being diagnosed with Multiple Sclerosis and spoke about the confidence that he has gained since starting to train Bailey, an Australian Labradoodle, to qualify as a Dog A.I.D. Assistance Dog.

The impact on Rob's life has been significant, and the support provided by Dog A.I.D.'s experienced volunteer trainer has been incredible.

Six other physically disabled people in Buckinghamshire have registered interest this year in joining the Dog A.I.D. Assistance Dog programme, and hundreds more across the country. The charity is appealing for experienced dog trainers to contact them about this amazing opportunity to change lives by volunteering your dog training skills and expertise.

You will also be able to develop your skills, networks and access new training opportunities. Further information at [dogaid.org.uk/information-for-trainers](http://dogaid.org.uk/information-for-trainers) and please contact Kate, Dog A.I.D.'s Volunteer Manager on [kate.armitage@dogaid.org.uk](mailto:kate.armitage@dogaid.org.uk) if you are interested.



## VOLUNTEERS REQUIRED FOR PLATINUM WAY PLANTING



**As part of the new Platinum Way shared cycle and footpath project, Buckinghamshire Council is working with Chiltern Rangers and the local community to make the route a haven for wildlife.** We also want local people to enjoy the peace and tranquillity that nature can bring, whether it be on their commute to work, or a weekend stroll.

Over 10 days, beginning on **Monday 28 November** and ending on **Friday 9 December**, we aim to plant over 4,000 hedgerow plants, as well as native bulbs and wildflowers.

With this huge target, it's not surprising that we'd love some help! If you are interested in getting involved, even just for a couple of hours, please email [info@chilternrangers.co.uk](mailto:info@chilternrangers.co.uk) and we will send you further details of each day's location.



**Local charity Stoke Mandeville Spinal Research (SMSR) launches its 10th Anniversary celebrations in January 2023, marking 10 years of funding ground-breaking research into spinal cord injury (SCI).** Since 2013, SMSR has pledged to put quality of life at the centre of its research efforts for people living with SCI and has already committed nearly £1 million to finding new treatments and practical solutions to tackle some of the major complications linked to the condition.

### Become an Anniversary Ambassador

Throughout 2023, the charity will be calling on Aylesbury Vale businesses, community groups and schools to get behind their special year and become Anniversary Ambassadors to help raise an additional £100,000 towards future research.

You can choose any activity to get involved with and help raise vital funds; from a sponsored day in a wheelchair, quiz or dress down day at your workplace/school, to organising a car wash or coffee and cake sale and getting friends and family along to join in the fun.

“No matter what your ability, please help us to continue our work by supporting our 10th anniversary year,” explains SMSR’s Corporate and Community Fundraiser, Kate Favell. “There are so many ways people can join in and fundraise, which will make a real difference towards funding research which puts the SCI community at the heart of what it does.”

To find out more, or make a donation, visit [lifeafterparalysis.com/10years](http://lifeafterparalysis.com/10years)

## FREE WEEKLY MEALS

Everyone is welcome at FoodCycle Aylesbury’s weekly free meals at 6pm on Tuesdays. Come inside Aylesbury Vineyard for a warm tasty meal and good company. No referral needed, just turn up!

FoodCycle Aylesbury, Aylesbury Vineyard Church, The Vineyard Centre, Gatehouse Close, HP19 8DN. Visit [foodcycle.org.uk](http://foodcycle.org.uk), email [aylesbury@foodcycle.org.uk](mailto:aylesbury@foodcycle.org.uk) or call 02077 292775 for more information.



## FREE TOOL TO HELP LOCAL NOT-FOR-PROFIT ORGANISATIONS

**The Healthcheck Tool is a free online tool which gives a snapshot of the areas that a charity or community group needs to prioritise.** The tool is quick and easy-to-use and consists of questions that charity managers should ask from time to time to enable them to better understand whether the correct policies and procedures are in place, and that they are running efficiently.

It focuses on six core areas of running a not-for-profit organisation – Strategy and Business Planning, Governance, Leadership, Marketing and Communications, Finance and Funding, and Recruitment and Training – and creates a list of all the actions that should be taken, as well as advice on where to look for more information.

You can create a Healthcheck for your charity or community group by visiting [communityimpactbucks.org.uk/charities-groups/running-your-organisation/healthcheck-tool-for-charities/](http://communityimpactbucks.org.uk/charities-groups/running-your-organisation/healthcheck-tool-for-charities/) and if you would like tailored 1:2:1 advice on your next steps, contact one of the team on 0300 111 1250 or [info@communityimpactbucks.org.uk](mailto:info@communityimpactbucks.org.uk)

### AYLESBURY ROTARY CLUB CAROL FLOAT

Starting on Sunday 4 December, Santa will be touring the town most evenings from 6-8pm (5-7pm at weekends) until Christmas, bringing seasonal music and cheery waves to the streets of Aylesbury, and collecting for local charities.

For up-to-date details of all routes follow us on Facebook page – Rotary Club of Aylesbury, or on our website [aylesburyrotary.com](http://aylesburyrotary.com) where you can follow the float via our tracker.

### Please help us donate to local charities and foodbanks this Christmas

Our collectors will have collection buckets for cash and card readers. Text **DUCK** plus your donation amount to **70460**. You can donate a minimum £1, eg Text **DUCK2 to 70460 to donate £2**, or **DUCK3 to donate £3** or **DUCK10 to donate £10** etc. This will cost your donation amount plus one standard message charge.

Donate online at [justgiving.com/campaign/aylesburysanta](http://justgiving.com/campaign/aylesburysanta)

### DECEMBER

DAY	AREA
Monday 5	Southcourt
Tuesday 6	Haydon Hill
Wednesday 7	Elmhurst
Thursday 8	Stoke Road
Friday 9	Watermead South
Saturday 10	Static Float, High Street
Saturday 10	Hawkslade
Sunday 11	Weedon Road
Monday 12	The Coppice
Tuesday 13	Elm Farm Shops
Thursday 15	Meadowcroft/Quarrendon
Friday 16	Kynaston Avenue and New Stoke Mandeville Estates
Saturday 17	Static Float, High Street
Saturday 17	Wing
Sunday 18	Elm Farm 2

### STARTING FROM

Church of the Good Shepherd
Devereux Place
TBC
Rivets Sports Club
Car park by shops
10am-4pm
Mandeville School entrance
Horse and Jockey
Archer Drive
*See below
Community Centre
Winterton Drive
10am-4pm
Redwood Drive
Elm Farm Shops*

\*Check website or Facebook page (@Rotary-Club-Of-Aylesbury) for details

# CHANGES TO SHOPPING HOURS IN AYLESBURY TOWN CENTRE



DATE	FRIARS SQUARE	AYLESBURY MARKET*
Monday 19 December	9am-6pm	No market
Tuesday 20 December	9am-6pm	No market
Wednesday 21 December	9am-6pm	9am-2pm
Thursday 22 December	9am-6pm	No market
Friday 23 December	9am-6pm	9am-2pm
Saturday 24 December	9am-6pm	9am-2pm
Sunday 25 December	CLOSED	CLOSED
Monday 26 December	10:30am-4:30pm	No market
Tuesday 27 December	10:30am-4:30pm	No market
Wednesday 28 December	9am-5:30pm	CLOSED
Thursday 29 December	9am-5:30pm	No market
Friday 30 December	9am-5:30pm	9am-2pm
Saturday 31 January	9am-4pm	9am-2pm
Sunday 1 January	10:30am-4:30pm	No market
Monday 2 January	10:30am-4:30pm	No market
Tuesday 3 January	9am-5:30pm	No market

## AYLESBURY TOWN COUNCIL GRANTS

Aylesbury Town Council Grants can be awarded to fund local projects or activities as well as projects working in Aylesbury to improve public wellbeing.

The next Grants Committee meeting will take place on **Wednesday 18 January 2023**. The deadline for grant applications to be considered at this meeting is **Wednesday 21 December 2022 at 5pm**.

For information on how to apply for an Aylesbury Town Council Grant visit [bit.ly/AylesburyTownCouncilGrants](https://bit.ly/AylesburyTownCouncilGrants)



\*Subject to trader attendance updates on trading hours will be published on Buckinghamshire Council and Aylesbury Market Facebook pages.

## SANTA'S CHRISTMAS FLOAT VISITS – THE ROTARY CLUB OF AYLESBURY HUNDREDS

### Christmas Float Collection Dates - December 2022

Monday 5	Prebendal Farm	Wednesday 14	Berryfields (1)
Tuesday 6	Fairford Leys (North)	Thursday 15	Bedgrove (2)
Wednesday 7	Fairford Leys (South)	Friday 16	Berryfields (2)
Thursday 8	Watermead (North)	Saturday 17	Tring Road Tesco
Friday 9	Kingsbrook	Sunday 18	Tring Road Tesco
Monday 12	Broughton Avenue	Monday 19	Bedgrove (3)
Tuesday 13	Bedgrove	Tuesday 20	Broadfields Tesco

The new Sainsbury's, Gatehouse Road – to be confirmed





## MESSAGE FROM THE MAYOR

I was proud to represent the town at both the Buckinghamshire Thanksgiving Service and the St Mary's Church Memorial Service held in her late Majesty's honour. Many residents attended the event and it was especially nice to catch up and share time with you after the service. Thank you to Fr Doug Zimmerman for a thoughtful and touching service that perfectly represented the memory of Her late Majesty.

It was only in June that I joined with so many of you to celebrate and mark the 70 years of the reign of Queen Elizabeth II at the Platinum Jubilee celebrations across the town. From the parties, gatherings and soirées that I was invited to I was struck by the positive effect that Her Majesty has had on so many residents within the town. But what was most striking was how the power of our local communities across the town came together and how so many of you are giving service to others in need. Your love and care for your fellow residents has been a privilege to see and hear.

In August, I was delighted to attend Parklife Weekend. We saw so many great acts across the weekend, but I wanted to highlight two that stole the hearts and minds of many that attended Proms in the Park on the Sunday evening. I Have A Voice Too! theatre group and Saveliy and Zlatoslava (from a Ukrainian town named Khmelnytskyi) were two specific highlights for many and I wanted to thank you for your superb contributions to the event that really did give this year a different feel.

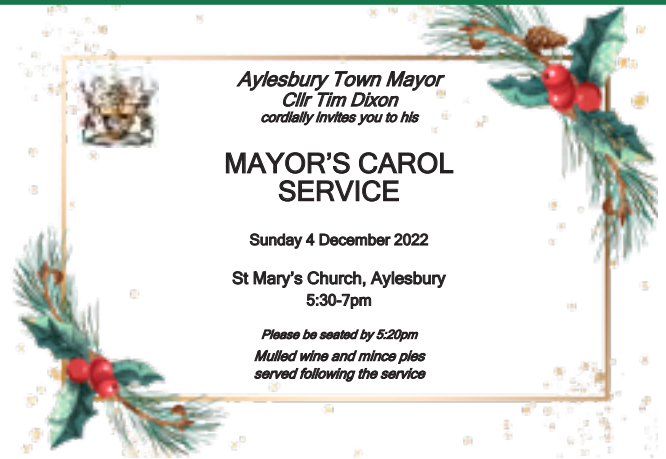
The Mayor's 10 Tonne Challenge continues to grow and we are finding supporters from across the town opening up donation stations or holding collection events. The need for support from residents within the town only grows as the challenge strengthens with Aylesbury Foodbank breaking its own record for meals given out in one month and with the number of people using the foodbank growing at a disturbing rate. It saddens me that the foodbank needs the support that it is receiving, but I am so pleased with how residents, businesses and community groups have risen to the challenge and are delivering donations at a rapid pace.

I wanted to highlight Aylesbury's very own Marillion for raising over one tonne of food donations and over £1,500 from their homecoming gig in September. And a special thank you to Waitrose for supporting in the lead-up, on the day, and since, David and Sue Stopps of Friars Club for support at the event and to Andy Rotherham, Cllr Bateman, and all of the volunteers and staff from the Foodbank for your work in setting up the event, during the collection time and for processing and weighing all the donations.

As this is my final article of 2022, I want to take this opportunity to wish you all a safe, peaceful, restful holiday period.

Cllr Tim Dixon  
Aylesbury Town Mayor

 @MayorOfAylesbury





## AYLESBURY LUNCHTIME CONCERTS

**Aylesbury Lunchtime Concerts are held every Thursday\* at 12:45pm in St Mary's Church.** Now in the 41st year, we have hosted the winner of the Leeds International Piano Competition and many up-and-coming young stars from The Royal Academy, Royal College of Music, Trinity and Guildhall schools of music and other renowned musical institutions as well as our 'regulars' who like to return to play for us. We have also welcomed professional and international musicians.

The repertoire is classical, often well-known and loved music, sometimes more modern and occasionally even a world premiere. We are presenting a variety of piano and smaller ensembles up until **8 December**. Our new season begins on **5 January**.

To maintain our wonderful reputation we need to increase audience numbers, our main source of income, so please support us. We are seeking volunteers to help with organising or fundraising. If you can help please get in touch at [aylesburylunchtimeconcert@gmail.com](mailto:aylesburylunchtimeconcert@gmail.com)

Have a look at our website for details. It's free to come along if you are under 18 and only £7 buys you an hour of live music and a chance to relax from the hurly burly of the world. [aylesburylunchtimemusic.co.uk](http://aylesburylunchtimemusic.co.uk)

*\*We have a break from 5 December and return on 5 January.*

## AYLESBURY CHORAL SOCIETY

**The Society will conclude its 90th year celebrations with a concert at St Mary's Church, Aylesbury on Saturday 3 December at 7:30pm.** The main works will be the Christmas Oratorio by French composer Camille Saint-Saëns and the popular Ceremony of Carols by Benjamin Britten in the full choir arrangement and accompanied by the harp. These will be conducted by our well-known director, Jeff Stewart.

In October, the Society held a successful, open-to-all choral workshop, rehearsing choruses from Haydn's Creation. That will be performed in full at our concert next year on **Saturday 1 April** (with orchestra). We will begin to rehearse The Creation starting on **Tuesday 3 January** and we hope that some of our visitors will want to join with us along with any other interested singers. Rehearsals take place at the Church on Fairford Leys at 7:30pm. [acschairman@gmail.com](mailto:acschairman@gmail.com) [aylesburychoral.org.uk](http://aylesburychoral.org.uk)

## PANTO MAGIC AT QPAC



**It's time to take a walk along the yellow brick road, as Aylesbury's Queens Park Arts Centre (QPAC) presents a pantomime production of 'The Wizard of Oz' at its Limelight Theatre this December.**

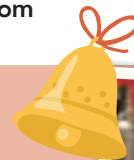
There's trouble in Oz. Elma the Wicked Witch of the West is determined to seize control of all the magic in the land, and it's up to Glinda the Good Witch of the North to stop her. A magical spell brings Dorothy Gale to Glinda's aide, but even the two of them may not be strong enough. To defeat Elma, they're going to need help from the greatest sorcerer ever known - the mighty and powerful Wizard of Oz. Only the Wizard is not all he seems. Hidden away in Emerald City is a dreadful secret; one that could spell disaster for everyone...



This year's show is packed full of slapstick, sing-a-longs, delightful dances and daft gags, and is produced by QPAC's award-winning storytelling company Unbound. The show once again features dance routines choreographed and performed by SDSD.

'The Wizard of Oz' runs for sixteen performances between **9-31 December**, with a mix of matinée and evening shows available. Tickets start at £8 with a family ticket for £36.

Two performances (**10 December at 1pm and 30 December at 7:30pm**) will feature **sign language** interpretation from Marie Biswell of Hand Talking and a **relaxed performance** will be held on **18 December at 5:30pm**. For full information on dates, times and prices visit [queensparkarts.com](http://queensparkarts.com)



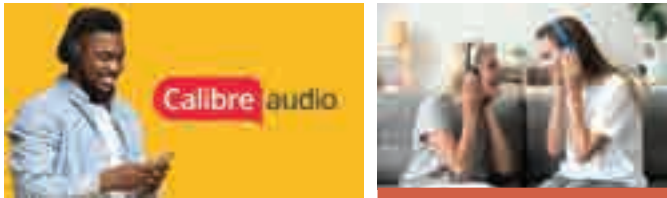
## AYLESBURY & DISTRICT RAMBLERS

Many people have taken up walking for pleasure as it is known to improve fitness as well as overall health and wellbeing. Members of Aylesbury & District Ramblers meet three times a week to walk around local beautiful countryside. Walks are led by a member of the group.

**Tuesdays**, start 10:30am, 4-6 miles, around 2 miles per hour  
**Thursdays**, start 10am, 6-9miles, around 2.5-3 miles per hour  
**Sundays**, start 10am, up to 16 miles but generally 10 miles

The walks are in the Chilterns and the Vale of Aylesbury but extend to Herts, Beds and Oxon. Walkers must have a reasonable level of fitness, strong boots or shoes, warm and waterproof clothing, water and snacks.

Come along and introduce yourself to the leader. To walk with the group regularly, individuals will be requested to join the Ramblers Association. Our group is run by volunteers and operates with limited funds. The Ramblers Association provides a small contribution for each member in the group. This is essential to meet operating costs. More information at [www.aylesbury-ramblers.org.uk](http://www.aylesbury-ramblers.org.uk)



## FREE AUDIOBOOKS TO RESIDENTS WHO STRUGGLE TO READ PRINT

National charity Calibre Audio is encouraging eligible local people to join its free audiobook service and offering the additional opportunity to take part in new book groups being set up specifically for its members in Bucks.

Based in Aylesbury, Calibre Audio supports adults and children across the UK with different print disabilities. These include blindness and visual impairment, learning difficulties such as dyslexia and ADHD, neurological conditions, physical disability that prevents holding a book and even long COVID.

Emma Scott, Director of Editorial and Commissioning, explains: "By offering free audiobooks to those who struggle to read print we can support learning and open up new interests and possibilities for them. Whether it's help to understand and follow an educational text, broadening knowledge on specific subjects of interest or the ability to get lost in a great story to help with relaxation, having free access to audiobooks can be transformative.

"We can now take this one step further for adult members in Bucks with regular book groups."

Calibre Audio has over 14,000 audiobooks ranging from the classics and bestsellers to non-fiction and poetry. There is also an extensive collection for children, including GCSE and A level set texts. Find out more at [calibreaudio.org.uk](http://calibreaudio.org.uk) or email [enquiries@calibre.org.uk](mailto:enquiries@calibre.org.uk)



## CHRISTMAS AT THE MUSEUM

We're getting in the festive mood at Discover Bucks Museum with lots of great Christmassy events to suit everyone. The first is the **Magic of Dickens** on **Saturday 3 December**, a show about the life of Charles Dickens and his interest in magic. Then on **Friday 9 December** we have **A Christmas Carol** – an outstanding one-man performance of Charles Dickens' classic tale of Scrooge told in the author's own words. **Christmas through the Ages** on **Saturday 10 December** is a fantastic family event. Have fun discovering what Christmas was like in the Tudor, Georgian and Victorian eras with lots of games, crafts and carols and of course mince pies!

Opening on **Saturday 26 November**, find out how amazing your brain is and how it works in our exciting new hands-on exhibition, **Your Amazing Brain**: a user's guide, which is mind-boggling fun for all ages. With over 15 interactive puzzles and 'mind-bending illusions' we will show you how your brain can play tricks on you!

There's lots more to discover in our new galleries that tell 200 million years of Bucks history and for hands-on fun the Roald Dahl Children's Gallery is packed with exhibits inspired by Roald Dahl's marvellous children's stories. Drop into the Museum Shop for a selection of unusual and unique Christmas gifts.

For more information, charges and to book please visit [discoverbucksmuseum.org](http://discoverbucksmuseum.org) Discover Bucks Museum, Church Street, Aylesbury HP20 2QP



## CHRISTMAS CRAFT AND GIFT FAIR

Find that something special for your loved ones at the **Aylesbury Christmas Craft and Gift Fair on Sunday 4 December**. The ever-popular event will take place in the town's historic **Market Square** between **10:30am-3pm**.

The fair will feature a number of local stallholders offering a variety of unique and handmade gifts, from jewellery and homeware, to food and drink, clothing and a range of festive products. Keep the family entertained with live music, children's activities and other seasonal delights. So wrap up warm and come join us with your friends and family for some festive cheer and a truly wonderful experience!

For the latest information on the event, see [visitaylesbury.co.uk](http://visitaylesbury.co.uk)

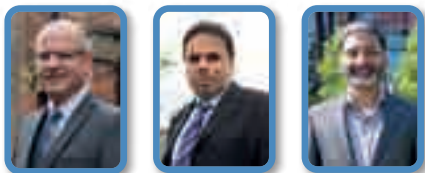




AYLESBURY  
TOWN COUNCIL

# Aylesbury Town Council Ward Map

## Ward: Gatehouse



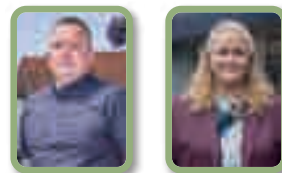
Cllr Anders Christensen 07834 995690  
Cllr Tuffail Hussain 07832 913171  
Cllr Phanindar Koya 07709 923308

## Ward: Central



Cllr Sherrilyn Bateman 07511 388978  
Cllr Tim Dixon 07956 802402

## Ward: Elmhurst



Cllr Ashley Morgan 07799 878059  
Cllr Susan Morgan 07799 074411

## Ward: Coppice Way



Cllr Chris Hendren 07545 107385

## Ward: Oakfield

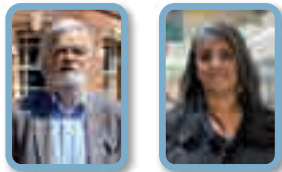


Cllr Tom Hunter-Watts 07595 178660



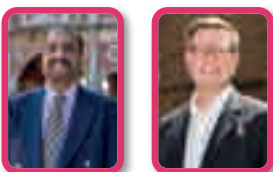
Cllr Mark Willis 07723 091637

## Ward: Quarrendon



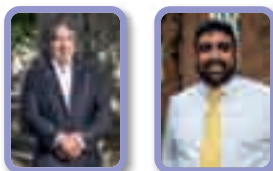
Cllr Alan Sherwell 01296 420672  
Cllr Gurinder Wadhwa 07840 151444

## Ward: Oxford Road



Cllr Mohammed Azam 07438 958347  
Cllr Steven Lambert 01296 395511

## Ward: Southcourt



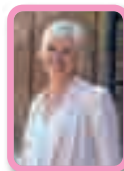
Cllr Niknam Hussain 07540 842407  
Cllr Waheed Raja 07969 056877

## Ward: Walton Court



Cllr Nidhi Mehta 07507 124756

## Ward: Hawkslade



Cllr Mary Baldwin 07809 615840

## Ward: Walton



Cllr Richard Lloyd 07887 685345

## Ward: Mandeville & Elm Farm



Cllr Sue Chapple 01296 426814



Cllr Roger King 01296 482812



Cllr Denise Summers 01296 424903

## Ward: Bedgrove



Cllr Raj Khan 07958 214480



Cllr David Thompson 07836 694463



Cllr Mark Winn 07469 711724



## WHO DO I TALK TO ABOUT?...

### AYLESBURY TOWN COUNCIL

Aylesbury Town Council is the council closest to the residents in the parish of Aylesbury. The Town Council is here to be a voice for the residents by representing their views on issues affecting them. Call **01296 425678** or visit **aylesburytowncouncil.gov.uk**



**AYLESBURY  
TOWN COUNCIL**

#### AYLESBURY TOWN COUNCIL IS RESPONSIBLE FOR:

- Office of the Mayor and Mayoral engagements
- Management of all allotment sites
- Local Burial Authority - management of Tring Road Cemetery
- Devolved Services including grass cutting of urban highway grass verges
- Support Twinning of Aylesbury with Bourg-en-Bresse
- A programme of events throughout the year such as Parklife, Soapbox Derby, Aylesbury on Sea, Christmas and summer events along with other free events
- Award of grants to local groups and charities
- Free quarterly magazine, Aylesbury Town Matters
- Jonathan Page Play Centre
- Aylesbury in Bloom (hanging baskets, planters, floral beds, roundabouts and more)
- Partnership working and engagement with other community stakeholders and Buckinghamshire Council

### BUCKINGHAMSHIRE COUNCIL

Buckinghamshire Council provides services on a county-wide basis and has a very regulatory remit. Call **0300 131 6000** or visit **buckinghamshire.gov.uk**



#### BUCKINGHAMSHIRE COUNCIL IS RESPONSIBLE FOR:

- Collection of Council Tax and business rates
- Waste collection
- Waste disposal and household recycling centres
- Local planning and building regulations
- Public car parks
- Licensing and Environmental Health
- Leisure Services (including Aqua Vale and all parks)
- Award of grants to local groups and charities
- Grass cutting of open spaces and parks
- Grass cutting of rural highways/grass verges
- Upkeep of Aylesbury town areas such as Kingsbury and Market Square
- Roads and pavements
- Education and main libraries
- Social care services
- Trading Standards
- Registrars - births, deaths and marriages



## INTRODUCING FRED

**Thomas Hickman School is excited to introduce Fred! Fred will eventually work alongside the school's on-site therapist.** He is a miniature dachshund and at six months old is beginning his training to be part of our school. He is a very affectionate pup and a fast learner. He has already made a difference to some of the pupils that he has been introduced to. It's well known that dogs love human contact, but as humans, we also greatly benefit from their calming effect and it has been wonderful to see Fred having an impact already.



Therapy dogs are trained to be extremely patient, disciplined and good-natured. They provide great companionship to children who are suffering from anxiety, or struggling with other issues such as bereavement. They can also teach empathy and appropriate interpersonal skills.

Medical science has shown that a therapy dog can reduce blood pressure, promote physical healing, reduce anxiety, fatigue and depression, as well as provide emotional support. You may see Fred welcoming the children at the school gates as they arrive to school.

## FUNDRAISING WEEK AT AYLESBURY HIGH SCHOOL



**Aylesbury High School (AHS) has been a vital part of the local community for over 60 years, through fundraising, volunteering, charity events, and much more.** Community is at the heart of Aylesbury High School, and staff and students in the local Aylesbury community reflect this.

Every year, the school hosts a fundraising week during the last week of school before Christmas. It is the highlight of the school year for everyone, and each year we manage to raise thousands of pounds for local charities in the most fun ways possible. Teacher pantomimes, 'A-factor' - the school's annual talent show, Christmas jumper day, a Santa dash, a choir concert, and a teacher karaoke competition are among the events we host. Throughout the week, students are able to partake in or watch these events live in our main hall, which helps to create an amazing atmosphere.

Fundraising week has proven to be an excellent way of bringing the AHS community together to help others, while also having a good time. It is a one-of-a-kind week that no other local school hosts and it exemplifies how important we believe it is to give back to our town and its residents.

It's events like these that make Aylesbury High School so one-of-a-kind, and show others in the area why we are different. Fundraising week is so successful at encouraging students to discover fresh and innovative ways to give back to the community each year, and we're all proud to do so.

**Georgia Bolland, AHS Student**

## PARALYMPIC GOLD MEDALLIST LEADS CELEBRATION OF YOUNG PEOPLE

**The achievements of over a thousand young people, youth workers and volunteers from across Buckinghamshire, Milton Keynes and adjoining counties has been celebrated by Aylesbury-based charity Action4Youth.** Inspirational Paralympic gold medallist and world record holder rower Naomi Riches, MBE was guest speaker at the charity's BIG NIGHT OUT. Hosted at the Waterside Theatre, the event recognised young people's achievements through the charity's inspiring work including National Citizen Service (NCS), Duke of Edinburgh Awards (DofE), and their unique education initiatives of Breakout and The Inspiration Programme.



The charity's successful public partnership at The Junction in High Wycombe and outdoor adventure education at the Caldecotte Xperience in Milton Keynes were also in the spotlight.

Action4Youth CEO Jenifer Cameron applauded the involvement of businesses and high-profile individuals including President of the Trustees, Countess Howe, His Majesty's Lord Lieutenant of Buckinghamshire, to create an event to mark the successes of so many young people: "Young people are our future. It is wonderful to have a world-class local hero in Naomi Riches join us to celebrate the fantastic achievements of so many young people. We are very grateful to leading organisations such as NHBC and centre:mk, Alexander & Co, The Rectory Foundation, Stoke Park, and John Lewis for supporting us to put young people centre stage."

# NEW TRAINING CENTRE OPENS WITH OPPORTUNITIES FOR ALL

A new training centre has opened in Aylesbury giving young learners the perfect start to a variety of fresh career options. Central Training Aylesbury in Walton Street, offers a great range of Skills For Employment, Training and Personal Development (SETPD) allowing all young people to gain employability skills that will prove a gateway to future work.



Already 32 learners have enrolled at the centre to learn skills in areas as diverse as catering, business and administration, childcare, construction and driving theory. But the real beauty of the centre is that it recognises the growing need for off site learning which means there is room for up to 70 learners to be signed up.

Centre Manager, Karen Cox, has worked in educational training for 32 years and has seen how the need for skills training has evolved. She said: "For lots of reasons learners often need to have the option to learn away from a training centre. This could be down to anything from anxiety to mobility issues so the demand for a more flexible approach to training is growing.

"Often we can combine learning from home with some work-based training but ultimately we pride ourselves on offering a bespoke programme to all young people so they get the training that matches their requirements." Find out more at [centraltraininggroup.com/courses/Aylesbury](http://centraltraininggroup.com/courses/Aylesbury)

## AYLESBURY YOUTH TOWN COUNCIL

### MY FIRST CIVIC EVENT AS AN AYLESBURY YOUTH TOWN COUNCILLOR



Freya Jones with Mayor of Aylesbury, Cllr Tim Dixon

I was lucky enough to accompany the Mayor of Aylesbury, Cllr Tim Dixon, to an event intended to raise money for Waddesdon School. The event was held in a casual garden party manner and included a hog roast and paella. I spoke to fellow sixth formers, for which the event was raising money, for a new sixth form centre. It was lovely to connect and network with such a variety of individuals, who all had their own reasons for attending. In the afternoon, a lively auction was held including a variety of exclusive and unique items to be bought.

I frequently explained my role as a Youth Town Councillor and my ambitions within that. This led to many discussions with people of similar interests, job roles and altruism. I love the prospect of where these connections could lead me in the future or better our community.

I would highly recommend becoming a Youth Town Councillor for Aylesbury because of the positive impact and development it can have on you as an individual, and the community.

**Freya Jones**  
Aylesbury Youth Town Councillor



Meiyang receiving a certificate from the Town Mayor for being an amazing Youth Town Councillor



Youth Town Councillors Conor and Charlotte with the Town Mayor and Deputy Town Mayor at Parklife Weekend

If you'd like to become a Youth Town Councillor, email the Youth Town Council Clerk [benedicta.lasoye@aylesburytowncouncil.gov.uk](mailto:benedicta.lasoye@aylesburytowncouncil.gov.uk)  
@aylesburyyouthtowncouncil



ST  
MARY'S  
CHURCH  
SINGING  
TRADITIONAL  
CHRISTMAS  
CAROLS

IN A RELAXED  
FAMILY FRIENDLY  
ATMOSPHERE  
THE PERFECT WAY  
TO GET INTO THE  
CHRISTMAS SPIRIT

CAROLFEST

SUNDAY  
DECEMBER

11

6 - 7pm



AYLESBURY  
TOWN COUNCIL

