

# Aylesbury Town matters

Aylesbury Town Council Magazine  
Issue Nine June 2008



Serving the people of Aylesbury

*England's Future Internationals?*



**'Take pride in Aylesbury Town'**

[www.aylesburytowncouncil.gov.uk](http://www.aylesburytowncouncil.gov.uk)

## Inside this issue...

- The Mayor's Winter Charity Concert and Carol Concert on page 1
- The Sheriffs of Buckinghamshire on page 3 • Energy Saving Lights on page 8
- What's On April - August 2008 on page 10 • Aylesbury Town Mayor's Awards on page 18



## Contents:

	Page
'A-Starred' for Aylesbury	Inside front
The Mayor's Winter Charity Concert and Carol Concert	1
A Bright Future for Aylesbury	2
The Sheriffs of Buckinghamshire	3
Beautiful Aylesbury	4
Article on Aylesbury Cemetery	5
Demise of Independent Retailers	6
Climate Change	7
Energy Saving Lights	8
Insulating your Home	9
Top Tips for Home Energy Saving	9
What's On – Town Centre Events	10
April - August 2008	
Calculate your Carbon Footprint	12
Free Energy Saving Advice	12
Milton Keynes Energy Agency	13
Home Composting	13
Vehicle Activated Signs (VAS)	13
Watermead Village Fete	14
Hope 08	14
Baby's First Café	14
St. George's Day at the Farmers' Bar	15
New Year at the King's Head	15
Kitchen Garden	16
Plants and Herbs in the Garden	16
A Smart Move by the Town Council	17
New Litter Bins	17
A New Partnership with BCC	17
Aylesbury Town Mayor's Awards	18
Fred's Charity Ride	19
Contacting your Councillor	20
Aylesbury Town Councillors	Inside back
Green Fair and St. George's Day	Back

## Contact Details:

**Aylesbury Town Council**  
Town Hall, 5 Church Street, Aylesbury  
Buckinghamshire HP20 2QP

Telephone: **01296 425678**  
Facsimile: **01296 426134**  
Email: [info@aylesburytowncouncil.gov.uk](mailto:info@aylesburytowncouncil.gov.uk)

Visit our website:  
[www.aylesburytowncouncil.gov.uk](http://www.aylesburytowncouncil.gov.uk)

Opening hours:  
**Monday - Thursday 8.45 am - 5.15 pm**  
**Friday 8.45 am - 4.45 pm**

Cover photograph: Cllr Mark Willis presents a grant of £500 awarded to Aylesbury Town FC Under 8s by Aylesbury Town Council

## 'A-starred' for Aylesbury

### AUDIT OF ACCOUNTS 2006/07 FINANCIAL YEAR

In the current climate of stringent financial accounting the Town Council can report, yet again, that it has received an excellent report from the Audit Commission which is, appointed by Government to oversee the financial affairs and business of town and parish councils.

The Town Council has to ensure that the Council Tax it receives is spent on what is budgeted for and agreed at Town Council in the way Councillors approved. This means being audited twice: first by an independent, fully qualified Internal Auditor, and then by the External Auditor, part of the Audit Commission itself. The Auditors scrutinise not only the Town Council's financial records; they also inspect all aspects of the Council's work.

Auditors scrutinise records to ensure that grants have been awarded correctly; staff salaries paid as approved by the Personnel Committee and staff files kept up-to-date. They check that the Council's asset register is maintained and adequate insurance policies are in place; that Health and Safety standards are complied with and that income due to the Council is collected.

The annual Government Audit is very comprehensive and thorough and leaves no aspect of the Council's work unexamined. Every penny spent has to be explained and accounted for. The fact that the Council has received an absolutely clean bill of health, without so much as one single recommendation for change, for the third year running, shows that we are developing in the right direction. If any of our asset acquisitions or service deliveries had not represented top value for our residents and ratepayers, the Audit would have highlighted this. As it is, our performance in all areas has been 'A-starred'.

Another excellent demonstration of the fact that Aylesbury Town Council is indeed a Quality Council to be proud of!

**Cllr Steve Patrick**  
Leader of the Council

**Aylesbury Town Council is a member of English Historic Towns Forum and twinned with Bourgen-Bresse.**



## The Mayor's Winter Charity Concert & Carol Concert

The Mayor's Winter Charity Concert was held at Mandeville Upper School on the 14th of December. Young people from Aylesbury contributed to this annual event with music, dance and song. The audience was entertained by some enchanting little penguins and dance routines performed by very talented dancers from The Kercher School of Dance.

Guests clapped along to the Turnfurlong Jazz Band and tapped their feet to a dance routine from 'Hairspray', performed by The Musical Kidz Company, followed by some classical arrangements beautifully played by the Aylesbury Community Band Clarinet Trio.

The Thomas Hickman School Choir sang a wonderful selection of seasonal songs which had all the adults smiling with Christmas cheer. Mandeville School Orchestra encouraged the audience to accompany their arrangements of carols. Mandeville School Dancers amazed all those present with a very energetic dance performance. Mandeville Students manned the sound and lighting systems and St. John Cadets helped throughout the evening.

Aylesbury Mayor Jenny Puddefoot commented "It was a wonderful evening – everyone enjoyed the concert. We would like to say a big 'thank you' to the young people who, at this busy time of year, gave up a Friday evening to take part. They entertained us all and helped the community by raising money for two very good causes, Home-Start (Aylesbury) and Crossroads".

Celia McCrea



Scene from Hairspray by The Musical Kidz Company



Mandeville School Orchestra



Kercher School of Dance



The Mayor's Carol Concert in Kingsbury Square  
Photo taken by Keith Turner

Despite the weather Aylesbury residents turned out in large numbers to enjoy the carols, the candlelit procession to St. Mary's and mulled wine and mince pies after the service.



Thomas Hickman School Choir  
All above photos taken by Becci Platts

## A Bright Future for Aylesbury

At a meeting of the full Council held Thursday 10 January 2008, Aylesbury Town Council decided its budget for the financial year April 2008 to April 2009. The increased cost to a 'D' band householder will be 20p per week.

The extra 20p will make it possible for the Town Council to double the total grants available for the local community. This will enable more of the voluntary groups and organisations who look after the very young, the elderly, the disabled and the disadvantaged to improve the quality of life for their constituents.

The environment in the Town will also benefit from this extra funding: a programme to enhance the quality of street furniture, particularly in Kingsbury and the Market Square, can now go ahead. Other Councils and business organisations have enthusiastically joined the Town Council in preparing for this year's Britain in Bloom competition. The Town Council is increasing its funding to improve the quantity and quality of floral displays around the town, expanding beyond the Town Centre. In a jointly funded programme with Bucks County Council, more landscaping and environment work will be undertaken to renovate the Centre, and flower beds, shrubberies and gardens will all be spruced up. This, it is felt, will make the Town more attractive, and encourage shoppers and visitors from elsewhere to continue to come to Aylesbury at a time when, due to the extensive re-development, many areas in Town look like demolition sites and they might easily be put off.

More events are planned to supplement the highly successful series of entertainments regularly promoted by the Town Council. As well as being popular with Aylesbury residents, as our surveys show, these occasions bring economic benefits to Aylesbury with very large increases in footfall in the Town Centre when events are held. Plans for extra public entertainments for Christmas, a fortnight long Aylesbury Festival of the Arts and many more fun days can now move ahead.

Cllr Mike Smith, spokesperson for Finance said "Town Council Officers have worked hard to limit the growth in our office expenditure to enable more resource to be put into delivering improved quality and growth in all our areas of responsibility. The increase in the budget is about the price of a half pint of milk, that is, 20 pence per week to the average 'D' band household, and offers excellent value for money."

Cllr Steve Patrick, Leader for the Council says "The Town Council wants to play a full part in supporting the local economy to protect services, jobs and property values, and in ensuring that Aylesbury is seen to be a great place to live in, to work in and to visit. This budget will allow us to take a lead for the Town and encourage businesses and other organisations to support our community."

**Cllr Mrs. J. Puddefoot**  
**Mayor of Aylesbury**



Market Square, Aylesbury. Photo courtesy of AVDC



## The Sheriffs of Buckinghamshire

Sheriffs are the oldest office under the Crown and pre-date the Norman Conquest. Originally known as the King's Reeve or the Shire Reeve, his duties included keeping the King's peace and the collection of the taxes and rents due to the King, as well as commanding the local militia.

After the Conquest the administration of the Shires was placed under various Earls, but as the work increased the authority and duties shifted to the Sheriff, further increasing his importance. By the 12th century the powers exercised by the Sheriff had become more routine, and by the 16th century his role had become largely ceremonial.

Until 1575 the Sheriff for Buckinghamshire was also the Sheriff for Bedfordshire, but after that date they were severed and each County had its own separate and distinct Sheriff.

The appointment of a High Sheriff is a royal prerogative, and the Queen adheres to this principle tenaciously. Once a year, usually in March, she holds a ceremony to appoint her High Sheriffs, marking each appointment by 'pricking' the candidates name on a parchment roll with a long needle, called a bodkin. The romantic tradition is that Elizabeth I was doing her needlework in the garden when the list was brought to her and, as she had no pen available, she used her needle. However there is evidence that Henry VIII also pricked the list. Whatever the origin, Elizabeth II uses a silver bodkin to prick the list to this day.

The appointment of each High Sheriff is endorsed by a prescriptive Royal Warrant, which "requires you to take the Custody and Charge of the said county, and duly to perform the duties of High Sheriff thereof during Her Majesty's Pleasure, whereof you are duly to answer according to law."

The confirmation of the royal appointment occurs within each county at a Declaration Ceremony when the outgoing High Sheriff formally hands over the office to his successor, who makes a solemn oath in front of the Presiding Judge of the County. In Buckinghamshire this ceremony traditionally occurs in early April, at the County Court in Aylesbury.

The High Sheriffs' responsibilities were consolidated by The Sheriffs Act 1887, which is still in force. High Sheriffs represent the Sovereign in their counties in

upholding all matters relating to the Judiciary and maintaining law and order. Their responsibilities conferred by the Crown through warrant from the Privy Council can be summarised as:

- attending Royal visits to the county; attending on High Court Judges on circuit and ensuring their well-being; acting as Returning Officer for parliamentary elections; proclaiming the accession of a new Sovereign and maintaining the loyalty of subjects to the Crown; and appointing an Under Sheriff and carrying out various ceremonial functions.



Sir Edward Coke L.C.J., M.P.  
Sheriff of Buckinghamshire (1625)

Following the Courts Act 2003, the High Sheriff's ancient responsibility for the enforcement of High Court Writs of Execution, via Under Sheriffs and executed by the Sheriffs' Officers, was transferred to the newly appointed High Court Enforcement Officers.

Today's High Sheriffs aim to support voluntary and statutory bodies engaged in all aspects of law and order. They take a special interest in the activities of such statutory bodies as the Police, the Prison Service, and the Probation Service.

As early as 1330 it had been laid down that the Sheriffs should have sufficient land in their counties to sustain the office. Up to 1700 the Sheriff was almost always a local landowner,

although he very often had connections with the court, and was chosen from the same class as Members of Parliament. After this date the Sheriff was chosen from a wider circle which included holders of quite small estates, prominent citizens of Aylesbury and London businessmen who had settled in Bucks. For instance Ansell, Bennett, Clayton, Dormer, Garrard, Hoare, Proby and Verney were all descendants of Lord Mayors. However the landed families provided a substantial number of Sheriffs. For instance the Cheney's supplied 12, the Hampdens 20, the Tyringhams 8 and the Verneys 6.

The current High Sheriff is Mrs Amanda Nicholson who read English at Oxford University and was awarded an honours degree. This was followed by a Master's degree in Creative Writing at Middlesex University before tutoring courses in Barnet and at Oxford University's Department of Continuing Education.

From 'The Sheriff of Buckingham' by Elliot Viney  
Notes extracted by Keith Turner



## Beautiful Aylesbury

It is the time of the year again when gardening enthusiasts are out tending their gardens to make their patch of Aylesbury green and pleasant.

Aylesbury Town Council will be hard at work clearing roadside beds and verges; putting up hanging baskets; replanting flower beds and roundabouts; and checking open spaces to make sure they are clean, tidy and where possible, serving as suitable natural habitats for wildlife to co-exist with people. All this work is to ensure that Aylesbury is beautiful for Aylesbury residents and to encourage tourists and shoppers to visit the Town.

This year the Town, District and County Councils are working together on Aylesbury's entry to Britain in Bloom, the annual competition organised by the Royal Horticultural Society. Floral displays will be increased, not only in the Town Centre but also on the more outlying estates, to ensure that they are enjoyed by all residents alike.

**Shirley Francis**  
Deputy Town Clerk

To encourage Town Centre retailers and local businesses to join the effort to present Aylesbury as a colourful and pleasant place to work and shop, the Town Council has decided to slash the cost of hanging baskets to £35 each. This price includes the erection in early June, maintenance throughout the summer and removal in early October.

The Town Council will be holding its annual Aylesbury in Bloom competition in late June or early July. The emphasis will be on front gardens and green/environmental issues. If you wish to enter, please telephone the Town Council office on 01296 425678 to request an application form.

**Keith Turner**



Photos taken by Ray Ghent



## Should the right of Aylesburians to be buried in their own Cemetery be less important than those of allotment tenants?

If Aylesbury Cemetery is to continue to provide burial space for Aylesbury residents, land bought for the purpose of expanding the Cemetery must be converted now. The land in question at Tring Road, although it is currently used as allotments, has never been designated a statutory allotment site and therefore planning permission for a change of use is not strictly required.

The land was purchased by the Town Council during the 1930s from Hazells, who had let it out in large plots to their workers. Hazells, however, were no longer prepared to offer that benefit to their employees, hence the sale. The Town Council of the time specifically bought the land to accommodate a predictable need to eventually extend the Cemetery. Had the ground not been acquired for that purpose, and since it has never had the protection of law it would, as a very valuable site, close to the town centre and with good access to a main road, have been built upon by now.

Having purchased the land for the purpose of extending the Cemetery, the then Council had a decision to make. Should it give notice to all the plot holders, (who had absolutely no legal rights whatsoever to continued tenancies) and let the land lie fallow for seventy years? Or should it permit continued use as non-statutory allotments until needed for the purpose for which it had been acquired?

The Council decided that on a temporary basis the land should continue to be let in small plots to people who wanted to cultivate produce for home consumption.

Since the tradition of usage as small plots is well established, but the original intention of the Council in making the purchase has not been widely publicised, some people now feel that the land should remain in cultivation. However, the Council has to balance competing needs amongst residents. There is only one Cemetery, and it cannot be moved. Burial space is at a premium and reducing, whilst a variety of alternatives exist for garden plot holders.

The Council currently has a programme of expanding its allotments stock and reclaiming land to create more plots for residents. In 2002 ATC took over 500 allotment plots on six sites from AVDC. Of these, 250 were rented out. The rest were derelict. Since then, the Town Council has brought all 500 existing plots into full use. Also the Council has created another 100 plots through reclamation of land allowed by AVDC to be used as dumping grounds for builders' rubble.

Of the present 600 plots owned by the Town Council, 200 are 10 pole in size. Extending to roughly 100 sq metres, these plots are generally considered to be too large for modern allotment holders. The Council is systematically converting 10 pole plots to 5 pole, or roughly 50 sq metres per tenant. This means that within the next five years, even after allowing for the withdrawal of land at Tring Road, the Council will have 700 plots to let.

The Town Council is additionally in the process of taking over the Bierton Road allotments site. This offers 80 plots, a number of which are unoccupied. Bierton Road plots are all 10 pole, and will gradually be converted to 5 pole, thus creating another 80 allotments. This will increase the Town Council offer to 860 plots, which is considerably above the national average.

It is intended that tenants from Tring Road will be consulted and worked with in a gradual and sensitive manner, and every effort will be made to accommodate those users who wish to continue as tenants of the Council. The expansion of the Cemetery however, is becoming urgent.

Aylesbury Vale District Council transferred the ownership of Aylesbury Cemetery to the Town Council on 1 June 2007. At that time it was believed that there was sufficient capacity for about another eight years of burials. Consultation with the independent Institute of Cemetery and Crematoria Managers, however, combined with the discovery of a fresh water course in the Cemetery, demonstrated that there was, in fact, only sufficient capacity for another four years of burials. The Town Council immediately decided to make early preparations to extend into the pre-purchased expansion land.

Some residents, mostly those with allotments, are strongly opposed to extending the Cemetery. They believe that the Town Council should buy more land elsewhere for future burials.

There are a number of problems with this. The existing Cemetery offers a pleasant outlook with mature trees in an established parkland setting. There are two Chapels and a Dead House, all recently renovated and all listed buildings. There are also public amenities and a good sized car park. Expansion of this existing facility would involve the removal of a temporary wall, the creation of a number of new paths and the provision of stand pipes. It would be inexpensive and relatively easy, and would ensure that Aylesbury people could continue to be buried in their own Cemetery for about another thirty years. Existing car parking and other amenities have enough capacity to serve many more families over the years. Finally, the cost of looking after the Cemetery and its amenities are supported at present by the revenue raised from new burials.

If the Town Council were to buy a new site, it would have to go outside the Town boundaries to do so. It would have to create a new Cemetery from scratch and this would be a very expensive process which would be borne by the residents of Aylesbury. The new Cemetery would not have chapels or toilets or even a car park unless more ratepayers money was raised to pay for building these things. At the same time, our existing Cemetery would have to be kept open so that Aylesbury people could visit their family graves. The grounds and buildings would still have to be maintained, but without any burial income they would cost the ratepayer about £80,000 per annum.

All deaths are devastating, but this is especially true of parents who have lost a child. Most people would agree that many of the bereaved need a place to grieve, and to visit in remembrance. At weekends the Cemetery is constantly thronged with relatives taking flowers to their family graves. There is no question that Aylesbury needs a working Cemetery. But a new Cemetery would mean that many of those wishing to honour their dead would have to visit two well-separated sites, instead of, as now, just one.

It is really a question of balancing the right of the whole population of the Town to be buried in Aylesbury Cemetery against that of a few plot holders who are unwilling to give up their allotments. The Council therefore feels that the right of residents to be buried in the Town Cemetery must be respected.

Although not strictly necessary, planning permission for a change of use of the land at Tring Road has been sought in the interest of transparency. Full consideration of all interests will be addressed in open session and the decision will be duly made after careful deliberation by the lawful Planning Authority.

Margaret Wagstaffe  
Town Clerk

## Concerns about the demise of Independent Retailers in Aylesbury

The Bucks Herald has recently reported the closure of shops in the High Street and other locations around Aylesbury, with Record House being one of the latest. Many Aylesburians from the 60s and 70s spent their pocket money in Record House. Its demise is probably linked to peoples' ability to download music from the Internet with such ease.

Independent retailers have to compete with the big supermarkets, which have metamorphosed into department stores offering huge discounts.

There was a time when Aylesbury had independent grocers, boutiques, florists and chemists all around the town, but these are gradually being replaced by the supermarkets. Now residents can shop without the need to go out into the wind and rain. It is possible to go from home to car to supermarket and then back home again without really braving the weather. However, when shopping is undertaken in this manner, opportunities to take in the surroundings and to see and evaluate the changes in Aylesbury are missed.

Mr Chris Clarke, spokesman for independent retailers in the Town Centre Partnership, told Aylesbury Town Matters that the uncertain start date of the proposed Waterside development had resulted in many independent retailers deciding to shut down. Mr Clarke believes they have concluded that the High Street will not be a place where people will shop, once Waterside has been completed. He also remarked that landlords, many of whom are not from Aylesbury, are demanding unrealistic rents for their premises. "Aylesbury needs independent traders to bring variety to the town", he explained. "The refurbishment of Kingsbury proved successful and increased the footfall for the area". Aylesbury Town Council agrees, and feels that more such investment in the existing town centre is needed. The Council has

called for the proposed development at Waterside to be redesigned. The original District Council proposals contained links between the new development and the High Street, which would facilitate the circulation of shoppers and bring new life to the High Street. These proposals disappeared from the version of the plans subsequently publicised, but it is understood that the general public response has resulted in these links being once again considered by the District Council for inclusion.

**Shirley Francis**  
Deputy Town Clerk

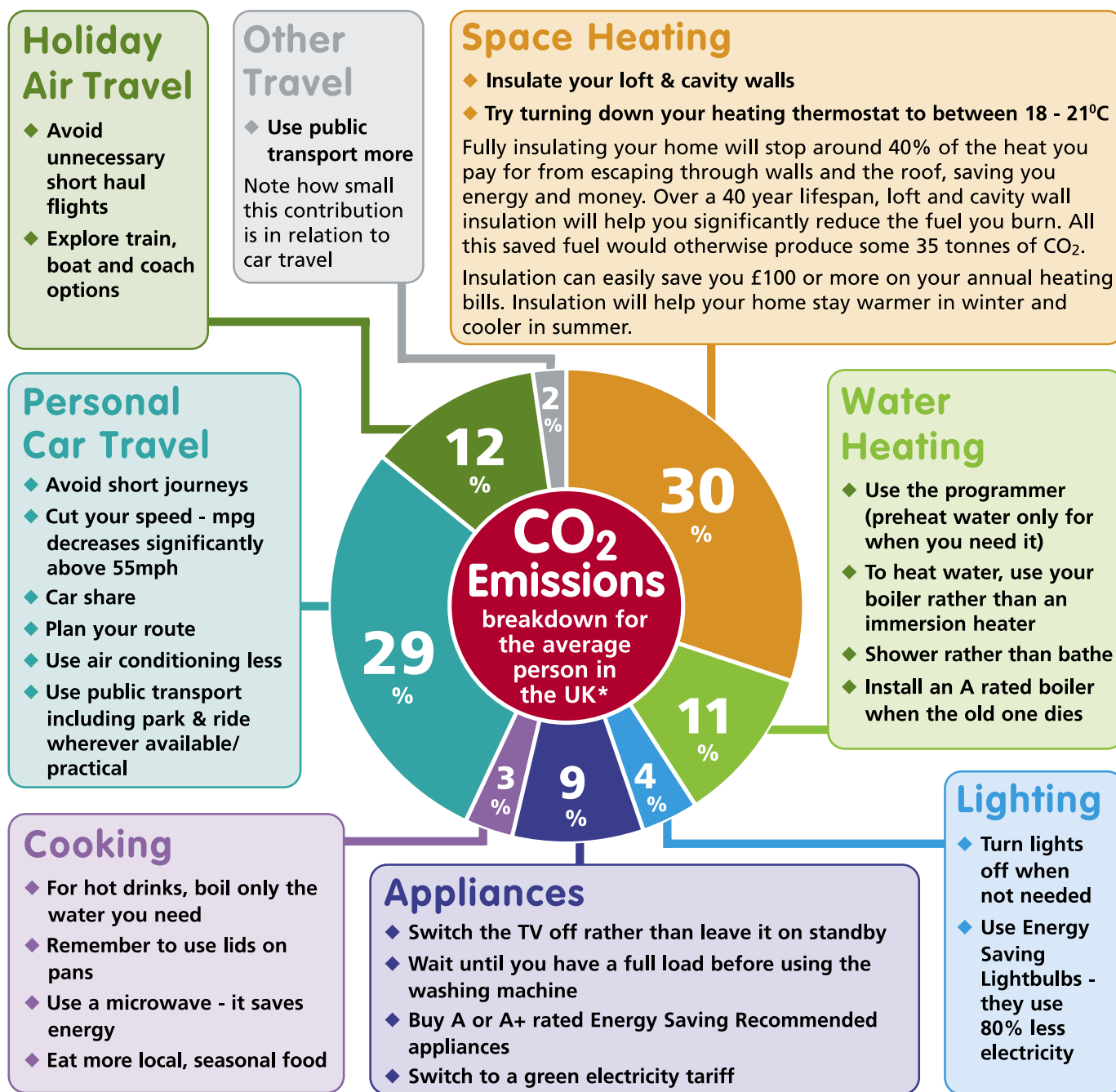


Photos courtesy of The Aylesbury Society



# Together we can tackle climate change

The scientific evidence is clear, human CO<sub>2</sub> emissions are accelerating climate change. We all need to reduce the emissions for which we are personally responsible by burning less fuel. Follow these handy tips to reduce your own household's carbon dioxide emissions.



## Holiday Air Travel

- ◆ Avoid unnecessary short haul flights
- ◆ Explore train, boat and coach options

## Other Travel

- ◆ Use public transport more
- Note how small this contribution is in relation to car travel

## Space Heating

- ◆ Insulate your loft & cavity walls
- ◆ Try turning down your heating thermostat to between 18 - 21°C

Fully insulating your home will stop around 40% of the heat you pay for from escaping through walls and the roof, saving you energy and money. Over a 40 year lifespan, loft and cavity wall insulation will help you significantly reduce the fuel you burn. All this saved fuel would otherwise produce some 35 tonnes of CO<sub>2</sub>.

Insulation can easily save you £100 or more on your annual heating bills. Insulation will help your home stay warmer in winter and cooler in summer.

## Personal Car Travel

- ◆ Avoid short journeys
- ◆ Cut your speed - mpg decreases significantly above 55mph
- ◆ Car share
- ◆ Plan your route
- ◆ Use air conditioning less
- ◆ Use public transport including park & ride wherever available/practical

## Water Heating

- ◆ Use the programmer (preheat water only for when you need it)
- ◆ To heat water, use your boiler rather than an immersion heater
- ◆ Shower rather than bathe
- ◆ Install an A rated boiler when the old one dies

## Cooking

- ◆ For hot drinks, boil only the water you need
- ◆ Remember to use lids on pans
- ◆ Use a microwave - it saves energy
- ◆ Eat more local, seasonal food

## Appliances

- ◆ Switch the TV off rather than leave it on standby
- ◆ Wait until you have a full load before using the washing machine
- ◆ Buy A or A+ rated Energy Saving Recommended appliances
- ◆ Switch to a green electricity tariff

## Lighting

- ◆ Turn lights off when not needed
- ◆ Use Energy Saving Lightbulbs - they use 80% less electricity

## ... and watch your Waste!

When household waste hits the tip it produces methane, a greenhouse gas. Reduce this by cooking only what you can eat and composting any waste vegetable matter. Buy only what you need. Most manufacture is energy intensive. For example, 10-20% of the CO<sub>2</sub> related to car ownership is produced before the car comes off the production line. Reduce, recycle, reuse. It makes sense.

For further information on reducing your carbon footprint, and for grants and discounts for loft and cavity wall insulation, contact the Energy Efficiency Advice Centre on **0800 512 012**

\*Our individual CO<sub>2</sub> emissions averaged 5.87 tonnes in 2005, excluding waste (Defra)

Courtesy of Milton Keynes Energy Agency

## Energy Saving Lights

When energy saving lights were first introduced they were something of a disappointment. However technology has moved on considerably and a much wider range of bulbs are available. And they are cheaper and will save electricity. The table below shows an approximate saving to be made by just changing one bulb in your house that burns for an average of 4 hours each day.

"Ordinary" bulb	Equivalent ESL	Savings per annum
40w	8 watts	£4.67
60w	12 watts	£7.01
100w	20 watts	£11.68

### Do they flicker when you turn them on?

Yes, they do, but unlike early energy saver lamps a few years ago, the latest designs generally include electronic rapid start circuitry to make the lamp light in less than 1 second with virtually no flickering.

### Don't they give a rather harsh light?

Some older designs had quite a high "colour temperature" which may be perceived as "colder" but many energy saving lamps now use a "warm white" coating to make the light very similar to a normal incandescent bulb.

### Do they take time to "warm up"?

The latest compact fluorescent lamps "warm up" very much faster than older designs, typically reaching 95% of their full light output in under a minute.

### They are always too long and stick out above my lampshade!

Again, with the latest designs, this need not happen. Many compact fluorescents are now so small that they are virtually the same size, or even smaller, than ordinary bulbs. If the bulb is visible, you can choose from one of the designs that has a decorative outer bulb to cover the fluorescent tubes.

### Do compact fluorescents get hot?

Compact fluorescents give out far less heat than normal incandescent bulbs, making them safer for use in unattended situations or as night light applications. This also makes them ideal for use with lampshades made of delicate materials that can be damaged by heat. All lamps do however give off some heat and should not be used in a totally enclosed light fitting unless there is some way for the heat to escape.

### Are "Energy Saver" and "Long Life" bulbs the same thing?

Yes and no! Compact fluorescent lamps do generally have a much longer life than ordinary incandescent bulbs but there are also many other types of "long life" bulb which do not also save energy. Generally a normal incandescent bulb will have a rated life of around 1,000 hours whereas compact fluorescent energy saving bulbs have a rated life of between 3,000 and 15,000 hours.

### Can energy savers be used with a dimmer switch?

Most compact fluorescent energy savers available on the UK market cannot be dimmed using a standard domestic dimmer. The latest technology "Dimmerable" energy savers started to be introduced in October 2007 and can be varied simply by rotating a standard dimmer switch. Please check to ensure that you are ordering the correct item before using an energy saver with a dimmer switch.

Information gathered by Keith Turner



## Insulating your Home

Insulating your home will stop around 40% of the heat you pay for from escaping through walls and the roof, enabling you to stay warmer whilst burning less fuel. This makes insulation extremely cost effective since it could help you to save up to 40p of every pound you currently spend on heating your spaces.

If your home was built after 1930 you probably have cavity walls. These can easily be insulated. Your loft insulation could also probably benefit from a top up. 10.5 inches (270mm) is the recommended depth. Loft and cavity wall insulation will easily save you £100 or more on your annual fuel bills and will normally pay for themselves in energy savings within two to three years.



There are a number of grant schemes in operation that offer discounted or free insulation to homeowners and private tenants. The Cocoon helpline offers impartial, expert advice on the best available deal from a database of options. Lines are open Monday to Friday, 9.00 am – 5.00 pm. For more information, contact the Energy Efficiency Advice Centre on 0800 512 012.

### Free insulation for over 70s

100% grant funded loft and cavity wall insulation is now available to all residents aged 70 years and above. This offer, which became available earlier this year, is made irrespective of your income and savings and whether or not you are in receipt of benefits. In fact, the only requirement is proof of age and name and address.

For most households, insulating has never made better financial sense. Following autumn's record oil prices and surging wholesale gas and electricity prices, insulation could be our last best defence against rising energy bills in 2008\*. All homeowners and private tenants qualify for discounted loft and cavity wall insulation. Fully insulating your home could easily reduce your fuel bills by £100 a year. The payback time is typically short and the long-term financial and environmental benefits are high.

\*The 30% surge in wholesale gas and electricity prices in Oct 07 prompted experts to predict a 10% rise for consumers in 2008.

## Top Tips for Home Energy Saving

- Set your thermostat at between 18 and 21° C. Every 1° C above this adds 10% on to your fuel bills.
- Remember to turn lights off when leaving a room. It's a myth that fluorescent tubes use more energy to switch them on than they use when they are in use. Switch them off when not required.
- When the TV is not in use, turn it off rather than use standby. Appliances on standby are now responsible for about 10% of an average household's electricity use.
- Don't overfill the kettle for just one drink, but remember that with electric kettles the element always needs to be covered. Jug kettles need less water as they have smaller elements.
- Replacing ordinary light bulbs with energy saving ones will use around one fifth of the electricity.
- A hot water tank jacket costs only a few pounds and can pay for itself in energy savings within a few months.
- Don't leave the fridge door open for longer than necessary, and try to avoid putting warm food straight into the fridge – wait until it has cooled down.
- Wait until you have a full load before using the washing machine.
- Stored water should be heated to around 60° C. This is high enough to kill off dangerous bacteria and is plenty warm enough for bathing and washing.
- Cavity wall insulation, loft insulation and other measures can help make considerable energy savings. House owners do not have to be in receipt of benefits to take advantage of grants and discounts, but if you receive an income or disability related benefit you may be entitled to have the work done free.

More information on energy saving can be obtained by visiting Milton Keynes Energy Agency Website [www.mkea.org.uk](http://www.mkea.org.uk)



For details of events at Bucks County Museum Tel: 01296 331441, The King's Head Tel: 01296 718

March - July	Landscapes of Stowe	Bucks County Museum	Learning/Exhibition
March - July	20th Century British Ceramics	Bucks County Museum	Learning/Exhibition
<b>APRIL</b>			
5	Open Mic Night	Queen's Park Centre	Live Performance
5 - 19	Roman & Ceramics	Bucks County Museum	Learning/Exhibition
5 & 6	Farmyard Fun & Country Crafts	Kingsbury	11.00 am
6	Family Cycle with Confidence Camp	Vale Park	
7 - 11	Easter Workshops	Queen's Park Centre	Learning
10	Rainbow	Civic Centre	Show
11	Purcells "The Fairy Queen"	Civic Centre	Show
13	Green Fair	Market Square	11.00 am - 4.00 pm
16	Paintings of Hartwell House	Bucks County Museum	Exhibition
17	Dara O'Briain	Civic Centre	Show
18	Paul Lamb & the King Snakes	Queen's Park Centre	Entertainment
19	Bleeding Hearts	Queen's Park Centre	Entertainment
19	Puppet Factory – Please book in advance	Bucks County Museum	10.30 am - 12.00 noon & 1.00 pm - 2.30 pm
19	St George's Day Celebrations	Kingsbury Square	10.00 am - 5.00 pm
20	St George's Day Parade	Scouts process from Market Square to St Mary's Church	2.00 pm Civic Centre 2.30 pm St Mary's Church
20	Meet a Roman Soldier – Free Gallery Talk	Bucks County Museum	12.30 pm - 1.00 pm
21	Shoebox Puppet Theatre – Plell	Bucks County Museum	10.30 am - 12.00 noon 1.00 pm - 2.30 pm
21 - 28	Textiles Festival	Queen's Park Centre	Festival
22	Farmers' Market	Market Square	9.00 am
23	Shoebox Whirligig	Bucks County Museum	11.00 am - 3.00 pm
23	All our Yesterdays	Civic Centre	Show
25	The Comedy Room	Civic Centre	Show
25	John Otway & Wild Willie Barrett	Queen's Park Centre	Entertainment
26	Focus on Fabrics – Embroidery Group	Queen's Park Centre	Lecture
27	Parisian Springtime	Kingsbury	11.00 am
27	Aliens – introduced plants and animals in Bucks. Free Gallery Talk	Bucks County Museum	12.30 pm - 1.00 pm
<b>MAY</b>			
Museums & Galleries Month		Bucks County Museum	Exhibition
2	Street2Feet	Queen's Park Centre	Street Dance Showcase
3	Open Mic Night	Queen's Park Centre	Live Performance
8	Jools Holland and his Rhythm & Blues Orchestra	Civic Centre	Entertainment



# TRE EVENTS

## August 2008

Panorama of Aylesbury. Photo courtesy of Ray Ghent

0812, The Civic Centre Tel: 01296 486009, Limelight Theatre Queen's Park Centre Tel: 01296 424332

9	Noise 4	Queen's Park Centre	Jazz/World Music
10	Georgian Family Fun Day	Bucks County Museum	Exhibition/Learning
10	Prussian Blue	Queen's Park Centre	Music Entertainment
11	Robot Wars	Kingsbury	11.00 am
16	Mick Pini Band & Son Maxwell Unruly Blues	Queen's Park Centre	Music/Entertainment
17	Tannahill Weavers	Queen's Park Centre	Folk Music/ Entertainment
18	African Adventure	Kingsbury	11.00 am
18	Focus on Fibres	Queen's Park Centre	Textile Exhibition
24 - 31	Georgian Week	Bucks County Museum	Exhibition/Learning
24 - 31	Pedal to Paddle	Aqua Vale	
25	Watermead Village Fete	Watermead	1.00 pm
27 - 30	Workshops & Courses for adults	Queen's Park Centre	Learning
27	Risborough Youth Theatre	Queen's Park Centre	Performance & Workshop
27	Farmers' Market	Market Square	9.00 am
27 - 28	Childrens Cycle with Confidence Camp	Vale Park	
30	The Searchers	Civic Centre	Show
<b>JUNE</b>			
1	Wild West Show	Kingsbury	11.00 am
20 & 21	Italian Market	Kingsbury	9.00 am
22	Freedom Parade	Town Centre	See press for details
24	Farmers' Market	Market Square	9.00 am
29	Georgian Garden Party	Provisional	Provisional
29	Family Cycle with Confidence Camp	Vale Park	
<b>JULY</b>			
Throughout	Civic Centre Final Bow	Civic Centre	See press for details
5	Roald Dahl Festival	Town Centre	11.00 am
5 - 19	Aylesbury Festival	Various Town Centre locations	See press for details
20	Aylesbury on Sea	Kingsbury	10.00 am
22	Farmers' Market	Market Square	9.00 am
26	Golf Crazy	Kingsbury	10.00 am
27	Music Festival	Kingsbury	To be advised
<b>AUGUST</b>			
Throughout	Music Festival	Market and/or Kingsbury Square	See press for details
6	Play Day in the Park	Vale Park	11.00 am
15	Olympic Sports Showcase	Kingsbury	10.00 am
24	Hobble on the Cobbles	Market Square	11.00 am
26	Farmers' Market	Market Square	9.00 am

## Calculate your Carbon Footprint

Web based Carbon Calculators can help us move from agreement on climate change to action. To use one, simply enter details of your annual energy use and travel, then watch the calculator translate this into estimated carbon dioxide emissions.

Once you have your estimate, you can use the calculator to test the impact of doing things differently. Newer calculators allow you to compare your emissions against the national average and UK targets. These are great for getting some perspective\* on the size of the challenge ahead. Examples include:

<http://actonco2.direct.gov.uk/index.html>

<http://www.nef.org.uk/actonCO2/carboncalculator.htm>

The UK government is currently committed to a 60% reduction in CO<sub>2</sub> emissions from 1990 levels by 2050. That means that the 1990 per capita UK emissions of 10 tonnes will need to fall below 4 tonnes per annum by 2050.\*\*

Carbon Calculators usually come with advice. You might opt to insulate your home, switch to a green electricity tariff, or buy only energy efficient appliances. Generating solar hot water or electricity may also be an option for some households.

For more information, contact the Energy Efficiency Advice Centre on 0800 512 012.

\* For example, a return flight to Sydney clocks up 6 tonnes of CO<sub>2</sub> emissions per traveller on NEF's previous calculator.

\*\* This compares to 1990 per capita emissions (including industry) of 2.1 tonnes in China and 1.4 tonnes in Brazil.

Source: UN Stats from CDIAC.

This article was produced by:

**Milton Keynes Energy Agency**  
Davy Avenue, Knowlhill  
Milton Keynes MK5 8NG  
Tel: 01908 699 927 Fax: 01908 665 577  
<http://www.mkea.org.uk>

Contact: Gordon Glass  
Marketing Co-ordinator  
Email: [gordon@mkea.org.uk](mailto:gordon@mkea.org.uk)

## Free Energy Saving Advice

Milton Keynes Energy Agency provides free, impartial, expert, advice on:

- Insulating your loft and walls
- Draught proofing
- Buying energy efficient appliances
- Using low energy lighting
- Investing in energy efficient heating systems and boilers
- Developing good energy saving habits for the home

They can also let you know about grants and discounts. Simply call free on 0800 512 012.





## Milton Keynes Energy Agency

Save up to £300 with a free home energy check. If you'd like to know how to make your home more energy efficient and cut your fuel bills, try this free home energy check questionnaire. It's an easy tick box form which asks basic questions about your home. The Milton Keynes Energy Agency will produce a free report based on the answers you provide offering specific advice for your situation.

If you would like a home energy check questionnaire, call Bucks, E. Berks, Beds & Herts Energy Saving Helpline on 0800 512 012.

## Home Composting...

...is cheap and easy to do. A third of what we bin could be converted to fertilizer. Turning kitchen and garden waste into compost is the only method of recycling you can do completely at home and when you do so you are also helping to protect our peat bogs, home to some of our rarest plants. It makes more sense than sending your kitchen waste off to landfill or even to be composted elsewhere. Currently you can obtain discounted compost bins if you live in Aylesbury.

COMPOST BIN	PRICE (inc. delivery)	RRP
Compost Converter 220 220 litre capacity, 74cm diameter, 90cm height	£8.00	£39.95
Compost Converter 330 330 litre capacity, 80cm diameter, 100cm height	£10.00	£49.95

Both bins have a compost removal hatch for easy access. No assembly required. Made from 100% recycled material.

There are a number of ways you can order. Call 0845 077 0757 or order online at [www.recyclenow.com](http://www.recyclenow.com) You can also access an order form from the Bucks County Council web site.

A free kitchen caddy and one roll of liners are provided when you buy a bin. The offer is limited to three bins, one kitchen caddy and one roll of liners per household. The offer is subject to availability and is an extension of the 2007 offer. You should expect delivery within twenty eight days. You can also take your 'green waste' to a Household Waste and Recycling Centre. This is useful for bulky and woody plants that are too big to rot in your home compost bin.

## Vehicle Activated Signs (VAS)

Speeding motorists are a danger on the roads. Speeding is often the major contributory factor in many serious and fatal road accidents.

Aylesbury Town Councillors are so concerned with the issue of speeding that they have set aside funds to install several vehicle-activated signs in the town. A number of sites where motorists speed, despite speed limit signs, have been identified by the Police, and it is hoped that they are suitable locations for the signs.

The approaching vehicle activates the sign (VAS), which displays a message when the speed limit is exceeded.

Cllr Mark Willis, who is actively involved in the scheme said "Many people unintentionally speed. This scheme is a way of reminding them of what the speed limit is in sensitive areas, such as around schools, without penalising the driver with points or a fine, and will contribute to increasing the safety of these areas".



Vehicle Activated Sign. Photo taken by Keith Turner



Watermead Larks. Photo provided by Sandra Landy

## Watermead Village Fete

'Larks by the Lake'

Sunday 25th May 2008

Despite the generous support of Hurst Estate Agents, last years Watermead's Larks by the Lake was very wet, but we are hoping for better this year. 2008 Larks by the Lake is on Sunday 25th May, starting at 1.00 pm.

Free parking, entrance and entertainment make this good value for a day out. Funfair activities take place on the Balloon Meadow with something for all the family including inflatables, craft stalls and much more.

On the Fisherman's Meadow there will be the village stalls plus entertainment throughout the afternoon. We have model displays, competitive games, live music and much more.

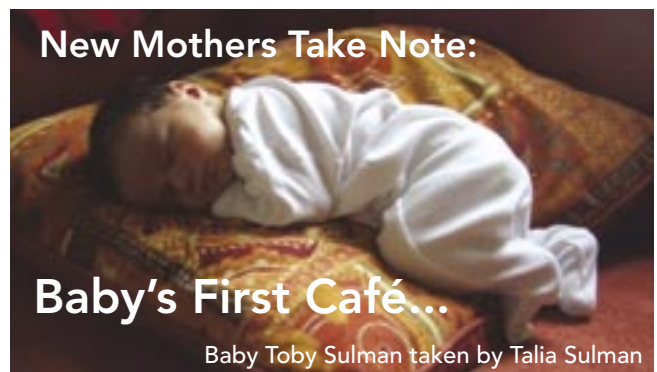
Catering includes a BBQ, a Pimms stall, and home made cakes. Any queries or requests for stalls, please contact the organiser John McClarty on (01296) 381060.

## Hope 08

Churches from across Aylesbury have joined a national initiative aimed at helping Christians to better serve the needs of their local communities. Through the sharing of ideas and resources, Hope 08 is already helping groups across the country to join together and pool their resources to 'do more – in word and deed'.

Locally, plans are already being made for arts and children's events in the town centre during the Easter period and several large-scale community service projects over the early May Bank Holiday weekend.

More information can be found at:  
[www.hope08aylesburyvale.org](http://www.hope08aylesburyvale.org)



...is opening on 2nd April in the Town Council premises, 5 Church Street, Aylesbury, every Wednesday from 2.00 - 3.30 pm.

This is a drop-in café where you can breast feed your baby in a comfortable, informal setting over a cup of tea. Help and support is on hand from Health Professionals from Bucks PCT who are skilled advisers or other mothers who are trained peer supporters. We welcome antenatal and postnatal mums.

For additional information or enquiries please contact Allison Harris on 01296 415304 or Clare Warren on 01296 745688.

## Organising an Event?

If you are organising an event for your community or activity group and would like some free publicity, why not put a notice in 'Aylesbury Town Matters'?

If you are interested please contact Shirley Francis, Deputy Town Clerk at Aylesbury Town Council, 5 Church Street, Aylesbury, Bucks. HP20 2QP. Call on 01296 425678 or email: [s.francis@aylesburytowncouncil.gov.uk](mailto:s.francis@aylesburytowncouncil.gov.uk)

## The Farmers' Bar celebrates St. George's weekend - 25th/27th April

The Farmers' Bar at The King's Head, at the top of Aylesbury's Market Square, will be celebrating St. George's weekend again this year over the 25th to the 27th April.

"It was such a success last year because everyone had such a good time that we want to do it again this year", says Claire Bignell who manages The Farmers' Bar, "and this year we want it to be even better!"

Last year there were Morris Men dancing and it is hoped that they will be dancing again this year. We had our own St. George and the Dragon who had great fun around Aylesbury last time and our plan is to bring them back for more town centre capers!

We will start this year with a Beer and Cider Festival at 6.00 pm on Friday 25th, which if it doesn't sell out before, will run until 10.30 pm on Sunday. The pub's courtyard will also have live music on the Saturday night from 8.00 pm.

The celebrations are really good fun and they draw the town out together with families and children. It is a great weekend and we want to be a part of it again this year. You could see the smiles on children's faces, and if children are having fun, you know the parents are happy too!

There will be more live music in The Farmers' Bar courtyard starting on the evening of Saturday 5th July and in the evenings of the Aylesbury Festival weekend of 12th/13th July and then each Saturday evening from 19th July until 23rd August as part of the lead up to Hobble on the Cobbles.



Staff of King's Head New Year's Eve. Photo courtesy of Neil Pickles

## The New Year...

was welcomed in style by that jewel in Aylesbury's crown, the King's Head.

Staff set the jolly tone for the evening by appearing splendidly attired as Batman and Robin and landlady Claire Bignall was magnificent as Batwoman.

Guests enjoyed a sumptuous champagne buffet and at midnight, as the last strokes of Big Ben died away the traditional 'Auld Lang Syne' was sung. Aylesbury residents who took part thoroughly enjoyed the revels and vowed to return on 31 December 2008.

### Contact

If you would like any further information on anything in this magazine, or if you would like to contribute to the next issue, please contact: Margaret Wagstaffe, Town Clerk at Aylesbury Town Council Offices, Town Hall, 5 Church Street, Aylesbury, Bucks. HP20 2QP Tel: 01296 425678 or email: [m.wagstaffe@aylesburytowncouncil.gov.uk](mailto:m.wagstaffe@aylesburytowncouncil.gov.uk)

### and Acknowledgements

I would like to thank the Members and Staff of Aylesbury Town Council for their help in the production of this magazine.

Margaret Wagstaffe, Town Clerk



## Kitchen Garden

A famous person once said 'no matter how small your garden, you should always allow two acres for the kitchen garden'. In this day it is not normally possible to do this, but growing some vegetables in an area of your garden proves to be very beneficial and rewarding.

You can grow a variety of vegetables in bags or pots. New potatoes will thrive quite happily in plastic bags – just keep filling them up with earth once the green leaves appear. There is nothing better than fresh, home grown new potatoes with a knob of butter. Runner beans can be cultivated in a large pot, using canes as a 'wigwam'. Peas will happily come along in a grow-bag.

As for salads, lettuces can easily be raised in spaces between other vegetables and cherry tomatoes will develop contentedly in a hanging basket where you can pick them as you walk past.

Don't forget herbs. Pots of basil on the windowsill will not only help with the tomatoes and sauces, but will also give your kitchen a lovely smell. Have a little thyme in a crack in the garden path and as you walk over it you can experience the delightful fragrance. Mint is an absolute must to accompany those new potatoes and lamb roasts.

Lavender can be dried for use in sachets in chests and wardrobes, and gives your room a delicious fragrance and you a sound night's sleep when placed under your pillow.

Fresh, home-grown produce is very good for you and at the end of the season you can keep the seeds for next year, thus cutting down on the expense. So you can obtain your 'five-a-day' fruits and vegetables at a reduced cost, and benefit from exercise and fresh air – a winning combination!!

Lynn Webb



## Volunteers Wanted

Volunteers are needed to help maintain the gardens of older and disabled people. You do not need to be an expert, you just need enthusiasm. If you enjoy being outside, meeting new people and can spare some time, please get in touch with Samantha on 01296 337456 or 07943 969426, or send an email to: [gardening@valevolunteers.org.uk](mailto:gardening@valevolunteers.org.uk)



## Plants and Herbs in the Garden

PINKS (Latin: Dianthus, meaning divine flower)

There is something of an old world charm surrounding Dianthus, or Pinks, as they are better known. They are amongst some of the best garden plants around. Most gardeners tend to refer to them as a "good doer".

Pinks will grow successfully in virtually any soil or situation. The plants form a neat mound of attractive, gracious evergreen foliage, over which the flowers are borne. Flowers reproduce perpetually and abundantly from May all the way through to October, and the range of colours available means that there is bound to be a variety to suit you.

The carnation-like blossoms are popular as cut flowers and many gardeners grow them for this purpose on allotments, to keep the house pleasant with blooms and scent all through the summer. All Pinks have a clove fragrance that really has to be experienced in order to appreciate yet another delight of these wonderful plants.

Plant Pinks where they will receive at least 4 - 5 hours of full sun each day. They thrive in fertile, fast draining and slightly alkaline soil. Avoid over-watering as this tends to turn the foliage yellow.

Cllr Mrs Jenny Bloom



Town Hall. Photo taken by Margaret Wagstaffe

## A Smart Move by the Town Council

In June 2007 Aylesbury Town Council had the opportunity to purchase the building, situated in the centre of Aylesbury, of which they were leasing part. At that time the Council was paying £33,000 a year (plus maintenance). Other tenants paid the landlord a total of £27,084. The Council borrowed the cost of the building from the Government. A mortgage was negotiated of £45,939 per annum over 30 years on a loan of £715,000 at a fixed rate of 5%.

After considering the business case the Council voted enthusiastically to buy the Town Hall. Every single Member supported this action.

The tenants' rent is now paid to the Council. A few months after the purchase, the Council reorganised the space in the building to make more offices available for renting out. The result of this new letting was to increase ATC's income from tenants to £33,584 p.a. The upshot was that instead of the Council paying rent, as it had previously, the mortgage cost was reduced to £20,645 per annum, thereby cutting costs by £12,355 each year. For the 30 year period the mortgage interest is fixed at 5% and the tenants rents will rise. Taking into consideration maintenance costs and other likely charges, it has been estimated that the Council will save on average £18,350 per year and effectively acquire the building for nothing.

Margaret Wagstaffe

## New Litter Bins

Residents may have noticed the smart new 'heritage' bins in the Town Centre. These have been provided by the Town Council, which is committed to making Aylesbury a more attractive place to be. Already these have been a great success.

There are now far fewer cigarette ends in the street, as smokers are using the bins to get rid of them instead of dropping them on the pavements.



New Litter Bin  
Photo taken by Keith Turner

## A New Partnership

Last year Bucks County Council launched a consultative document entitled 'A Better Deal for Buckinghamshire'. This document contained proposals for closer working partnerships between the County Council and towns and villages in Buckinghamshire, and for smaller local authorities to take over some aspects of service delivery in their areas. Aylesbury Town Council welcomed this initiative and has entered into an agreement with the County Council to become responsible for minor repairs to pavements and kerbs, to fill small potholes, to remove graffiti from County property, to see that roadside vegetation is kept under control, to maintain shrub beds, to clean road signs and to keep rights of way clear of impediments. The agreement is already working very well and the Town Council has taken on more staff to cope with the extra work. It is hoped that Aylesbury residents will begin to see a real improvement in the appearance of the Town in the very near future.

Residents who notice minor problems, such as broken paving stones, graffiti, obscured or dirty road signs or overgrown rights of way might like to report them to the Town Council, on 01296 425678 and the Council promises to take speedy action or, if the problem requires more resources than the Town Council has at its disposal, to pass the message to the appropriate officers at the County Council.

Margaret Wagstaffe





## Aylesbury Town Mayor's Awards

Recipients of the Mayor's Award. Photo courtesy of Bucks Herald

The Aylesbury Town Mayor's awards ceremony was held at the Town Hall shortly before last Christmas. The awards are given every year, in conjunction with Bryant Homes, for Service to Aylesbury Town Residents, and are given to a person or persons who have performed an unusual act of bravery, or for an outstanding achievement, a commitment to public service or an act beyond the call of duty for fellow citizens of the Town in general.

Local residents nominated people that they felt had shown exceptional effort, innovation or enterprise as individuals or as part of a group in their contribution made to the community.

A panel of judges selected winners and runners up. Winners awarded a cup and £100 cheque were Danyan Hume, for Individual Achievement; Alan Norchi of S.A.V.E. for Individual Commitment to the Community; Yasmin Younis of Future Inspirations for Service to the Community and Iain Ball for Individual Service to the Community.

Those awarded a cup and certificate were Carol Clarke of Victim Support for Service to the Community; Jenny Torpey for Individual Service to the Community, and

Lorraine Kennedy for Individual Commitment to the Community.

This year some special certificates were awarded in recognition of the service given by those who didn't meet the main award criteria in full.

Welcoming the opportunity to recognise the contribution and commitment made, the Mayor of Aylesbury, Cllr Mrs Jenny Puddefoot said: "These exceptional people make a real contribution to the friendliness and co-operation found within our communities. They have found innovative ways of bringing local residents together and created opportunities for others. The winners of the individual awards have shown a determination to succeed by overcoming personal challenges. All the people recognised by these awards have proved that by just giving that little bit extra time and commitment they have made a big difference to the community life in our Town of Aylesbury. They are an example to us all."

Jim O'Connor, Projects Manager for Bryant Homes, commented: "We are delighted to be sponsoring the awards for the 10th year running, which began



when we worked at the Fairford Leys development and has continued to where Bryant Homes is today at Buckingham Park.

We welcome this opportunity to work in partnership with Aylesbury Town Council. Developing community capacity isn't just about building houses, it is essential that local innovation is encouraged and rewarded in order to continue to build stronger communities. Well done to all the nominees for their remarkable achievements."

On a separate occasion, a Mayoral reception was held at the Town Hall in honour of the Riverside Volunteers, led by Andrew Plowman, for their work on the Aylesbury Riverside Walk. In 2007 the Riverside Walk received a national 'Blooming Wild' award given by the Royal Horticultural Society as part of their annual 'Britain in Bloom' competition. The group had also been the recipients of a 'Save' award for their environmental work.



If you know of anyone who deserves recognition we would love to hear from you. If you do wish to make a nomination, please contact me on 01296 425678 and I or one of the Administrative Assistants here will be delighted to talk you through the process.

**Margaret Wagstaffe**  
Town Clerk



Recipients of the 'Blooming Wild' Award  
Photo courtesy of Riverside Volunteers



Fred Clarke with supporting group. Photo taken by Keith Turner

## Fred's Charity Ride

Since becoming a Cycling Demonstration Town, Aylesbury has seen a magnificent five-fold increase in residents using a bicycle as one of their two main means of transport. The cycling achievements of Aylesbury have been so great that the Town has been recognised as a national leader in promoting cycling. To celebrate Aylesbury's third and final year as an official Cycling Demonstration Town, 2008 has been designated 'Year of Cycling' within the Town.

Nineteen-year-old Fred Clark from Winslow intends to cycle from Aylesbury to Bourg-En-Bresse, our Twin Town, in April, to raise money for Town Mayor Cllr Mrs Jenny Puddefoot's charities: 'Aylesbury Home-Start' and 'Crossroads'. 'Cycle Aylesbury' is supporting Fred on his 700 mile journey to Bourg-en-Bresse which is situated near to the Swiss border with France.

Aylesbury Town Council is also supporting Fred and helping him find sponsorship. "We also hope to reinvigorate the Twinning arrangements at the same time" said Cllr Puddefoot.

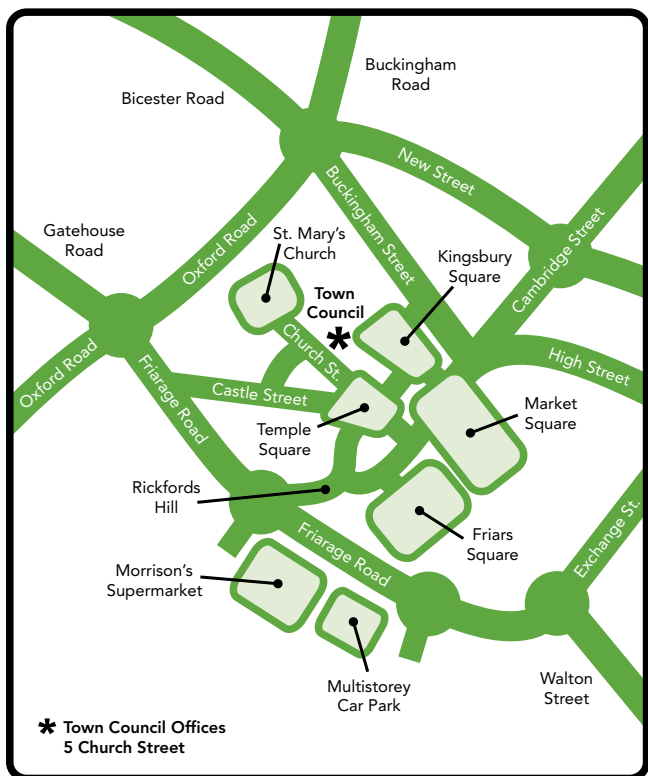
Fred explained: "This is something that I have been wanting to do for ages and thanks to the support from Cycle Aylesbury and Aylesbury Town Council I am able to realise my dream and at the same time raise money for good local causes. Training is going well and I'm very much looking forward to the big trip itself."

If you would like to sponsor Fred you can either do this online through [www.justgiving.com/fredschallengehomestart](http://www.justgiving.com/fredschallengehomestart) and [www.justgiving.com/fredschallengecrossroads](http://www.justgiving.com/fredschallengecrossroads) or by contacting the Mayor's Assistant on 01296 425678.

**Keith Turner**

## Contacting your Councillor

COUNCILLOR	CONTACT NUMBER	EMAIL
Jenny Bloom	07729 011501	j.bloom@aylesburytowncouncil.gov.uk
Alan Sherwell	01296 420672	alan.sherwell@aylesburytowncouncil.gov.uk
Graham Webster	01296 483416	graham.webster@aylesburytowncouncil.gov.uk
Penni Thorne	01296 422232	penni.thorne@aylesburytowncouncil.gov.uk
Steven Mitchell	01296 392096	steven.mitchell@aylesburytowncouncil.gov.uk
Denise Summers	01296 336731	denise.summers@aylesburytowncouncil.gov.uk
Sue Chapple	01296 426814	sue.chapple@aylesburytowncouncil.gov.uk
Mark Willis	01296 586109	m.willis@aylesburytowncouncil.gov.uk
Roger Surguy	01296 425678	r.surguy@aylesburytowncouncil.gov.uk
Pat Jamieson	01296 428275	pat.jamieson@aylesburytowncouncil.gov.uk
Tuffail Hussain	0795 626 9544	tuffail.hussain@aylesburytowncouncil.gov.uk
Jenny Puddefoot	01296 612461	jenny.puddefoot@aylesburytowncouncil.gov.uk
Julie Ward	07766 545236	julie.ward@aylesburytowncouncil.gov.uk
Amjad Mohammed	07956 803458	a.mohammed@aylesburytowncouncil.gov.uk
Steve Patrick	01296 424986	steve.patrick@aylesburytowncouncil.gov.uk
Brian Roberts	01296 422881	b.roberts@aylesburytowncouncil.gov.uk
Freda Roberts MBE JP	01296 424452	freda.roberts@aylesburytowncouncil.gov.uk
David Ralph	01296 581975	david.ralph@aylesburytowncouncil.gov.uk
Zulifqar Ahmed	0793 194 5804	ahmed.zulifqar@aylesburytowncouncil.gov.uk
Mike Smith	01296 421732	mike.smith@aylesburytowncouncil.gov.uk
Ranjula Takodra	0795 842 3083	ranjula.takodra@aylesburytowncouncil.gov.uk
Ray Ghent	01296 489327	ray.ghent@aylesburytowncouncil.gov.uk
Noreen O'Sullivan	07796 804676	n.osullivan@aylesburytowncouncil.gov.uk
Kevin Peters	07989 892896	k.peters@aylesburytowncouncil.gov.uk



## Where to find the Town Council

Members of the public are always welcome at the Town Council offices, however, as we are located through an archway, some people have found us difficult to locate.

If you would like to come in and see us, go to Church Street in the Old Town. Bucks County Museum is our next door neighbour, at number 3 Church Street. We are through the archway at number 5 Church Street and once you have walked through the archway our door is directly facing you.

If you have an issue or problem you would like to discuss, do please call in to see us. You will be very welcome!

**Margaret Wagstaffe**

## Aylesbury Town Councillors



Clr Mrs  
**Jenny Bloom**  
Ward: Bedgrove



Clr  
**Alan Sherwell**  
Ward: Bedgrove



Clr  
**Graham Webster**  
Ward: Oakfield



Clr Mrs  
**Penni Thorne**  
Ward: Bedgrove



Clr  
**Steven Mitchell**  
Ward: Central



Clr Mrs  
**Denise Summers**  
Ward: Mandeville



Clr Mrs  
**Sue Chapple**  
Ward: Mandeville



Clr  
**Mark Willis**  
Ward: Bedgrove



Clr  
**Roger Surguy**  
Ward: Walton Court



Clr Mrs  
**Pat Jamieson**  
Ward: Gatehouse



Clr  
**Tuffail Hussain**  
Ward: Gatehouse



Clr Mrs  
**Jenny Puddefoot**  
Ward: Elmhurst



Clr Mrs  
**Julie Ward**  
Ward: Elmhurst



Clr  
**Amjad Mohammed**  
Ward: Elmhurst



Clr  
**Steve Patrick**  
Ward: Oakfield



Clr  
**Brian Roberts**  
Ward: Mandeville



Clr Mrs  
**Freda Roberts MBE JP**  
Ward: Southcourt



Clr  
**David Ralph**  
Ward: Southcourt



Clr  
**Zulifqar Ahmed**  
Ward: Oxford Rd



Clr  
**Mike Smith**  
Ward: Oxford Rd



Clr Mrs  
**Ranjula Takodra**  
Ward: Walton Court



Clr  
**Ray Ghent**  
Ward: Quarrendon



Clr Miss  
**Noreen O'Sullivan**  
Ward: Quarrendon



Clr  
**Kevin Peters**  
Ward: Gatehouse



**Solar  
Energy**

# GREEN FAIR

**Ethical  
Foods**

**13th April 2008**

**Recycling**

**Join us in the Market Square**

**Fairtrade**

**Organic  
Farming**

**11.00 am - 4.00 pm**

**Low Impact  
Living**

**Find out more about...**

## St. George's Fun Day

**Saturday 19th April  
11.00 am - 4.00 pm**

## St. George's Day Scout Parade

**Sunday 20th April**

**Dignitaries procession from Market Square to  
St. Mary's Church for service at 2.30 pm**

**Live Music  
Street Theatre  
Stilt Walkers  
Clog Dancers  
Minstrels**

**Town Cryer  
Face Painting  
George and the  
Dragon**

**Morris Men  
Parade**

**May Pole  
Jugglers  
Stalls**

### **Aylesbury Town Council**

Town Hall, 5 Church Street, Aylesbury, Bucks. HP20 2QP

Tel: **01296 425678** Fax: **01296 426134**

Email: [info@aylesburytowncouncil.gov.uk](mailto:info@aylesburytowncouncil.gov.uk)

[www.aylesburytowncouncil.gov.uk](http://www.aylesburytowncouncil.gov.uk)

Designed and printed by

**bluepepperdesigns**  
creative design and print

Telephone. **01296 424699** Website. [www.bpdesigns.co.uk](http://www.bpdesigns.co.uk)